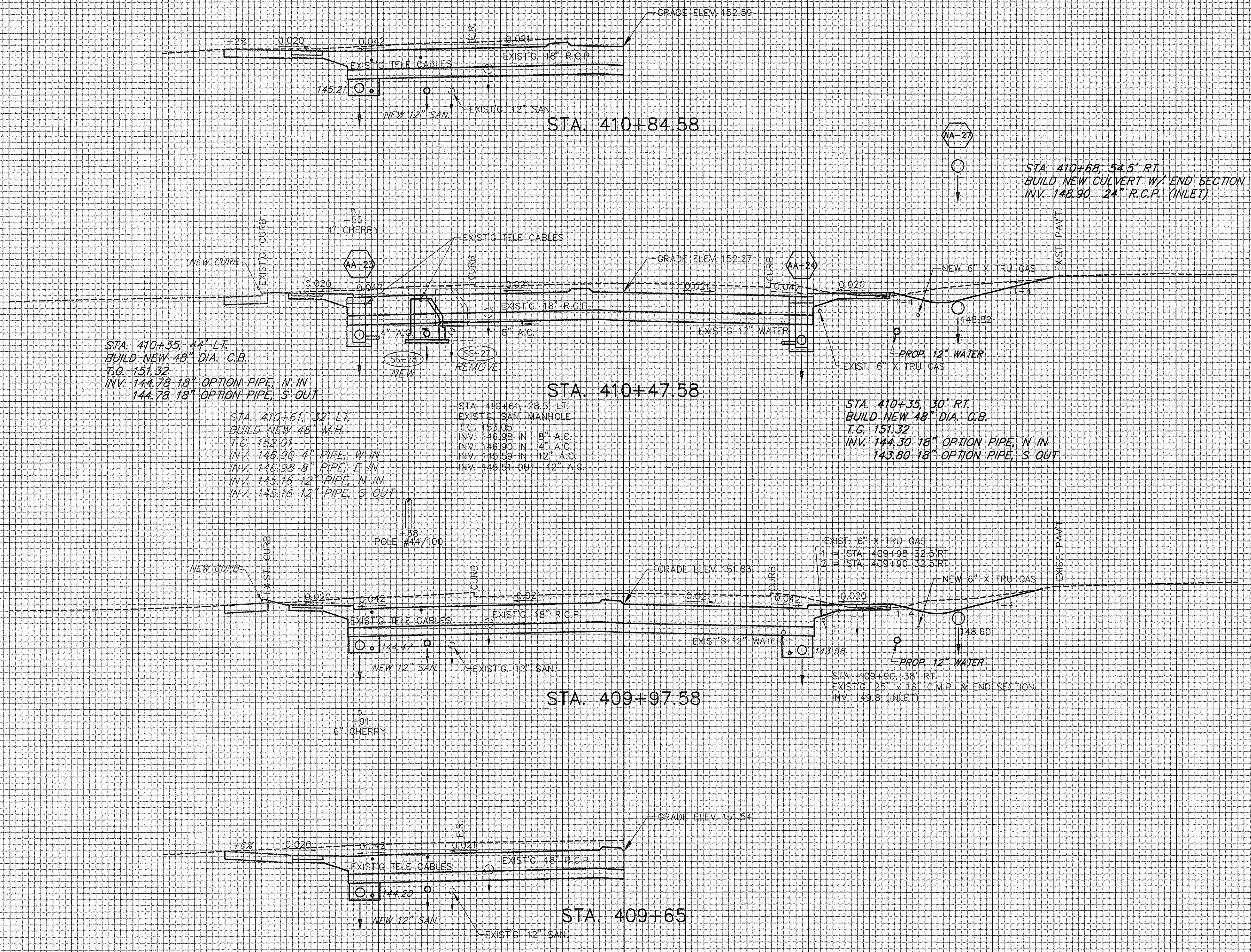


DATUM ELEV = 145.00

DATUM ELEV = 145.00

DATUM ELEV = 145.00

DATUM ELEV = 145.00



STA. 410+35, 44' LT.  
 BUILD NEW 48" DIA. C.B.  
 T.G. 151.32  
 INV. 144.78 18" OPTION PIPE, N IN  
 144.78 18" OPTION PIPE, S OUT

STA. 410+61, 32' LT.  
 BUILD NEW 48" M.H.  
 T.C. 152.01  
 INV. 146.90 4" PIPE, W IN  
 146.98 8" PIPE, E IN  
 145.16 12" PIPE, N IN  
 145.16 12" PIPE, S OUT

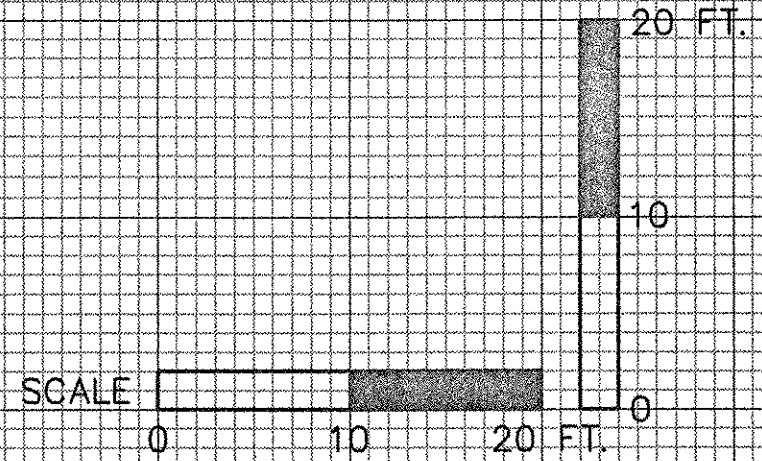
STA. 410+61, 28.5' LT.  
 EXIST'G SAN. MANHOLE  
 T.C. 153.05  
 INV. 146.98 IN 8" A.G.  
 146.90 IN 4" A.G.  
 145.59 IN 12" A.G.  
 145.51 OUT 12" A.G.

STA. 410+35, 30' RT.  
 BUILD NEW 48" DIA. C.B.  
 T.G. 151.32  
 INV. 144.30 18" OPTION PIPE, N IN  
 143.80 18" OPTION PIPE, S OUT

STA. 409+90, 38' RT.  
 EXIST'G 25' x 18" C.V.P. & END SECTION  
 INV. 149.8 (INLET)

STA. 405+78.5 - 416+25 RT.  
 INST. NEW 6" X TRU GAS

STA. 405+82.5 - 428+86 RT.  
 EXIST. 6" X TRU GAS TO BE RETIRED IN PLACE



SHELBURNE - SOUTH BURLINGTON

STA. 409+65 TO STA. 410+85

SURVEYED BY V.S.C. INC. DATE \_\_\_\_\_  
 DRAWN BY E.A.A. INC. DATE \_\_\_\_\_  
 TRACED BY E.A.A. INC. DATE \_\_\_\_\_

PROJECT NH-EGC-019-4(28)

CROSS-SECTION DWG. NO. 110

SHEET 202 OF 283