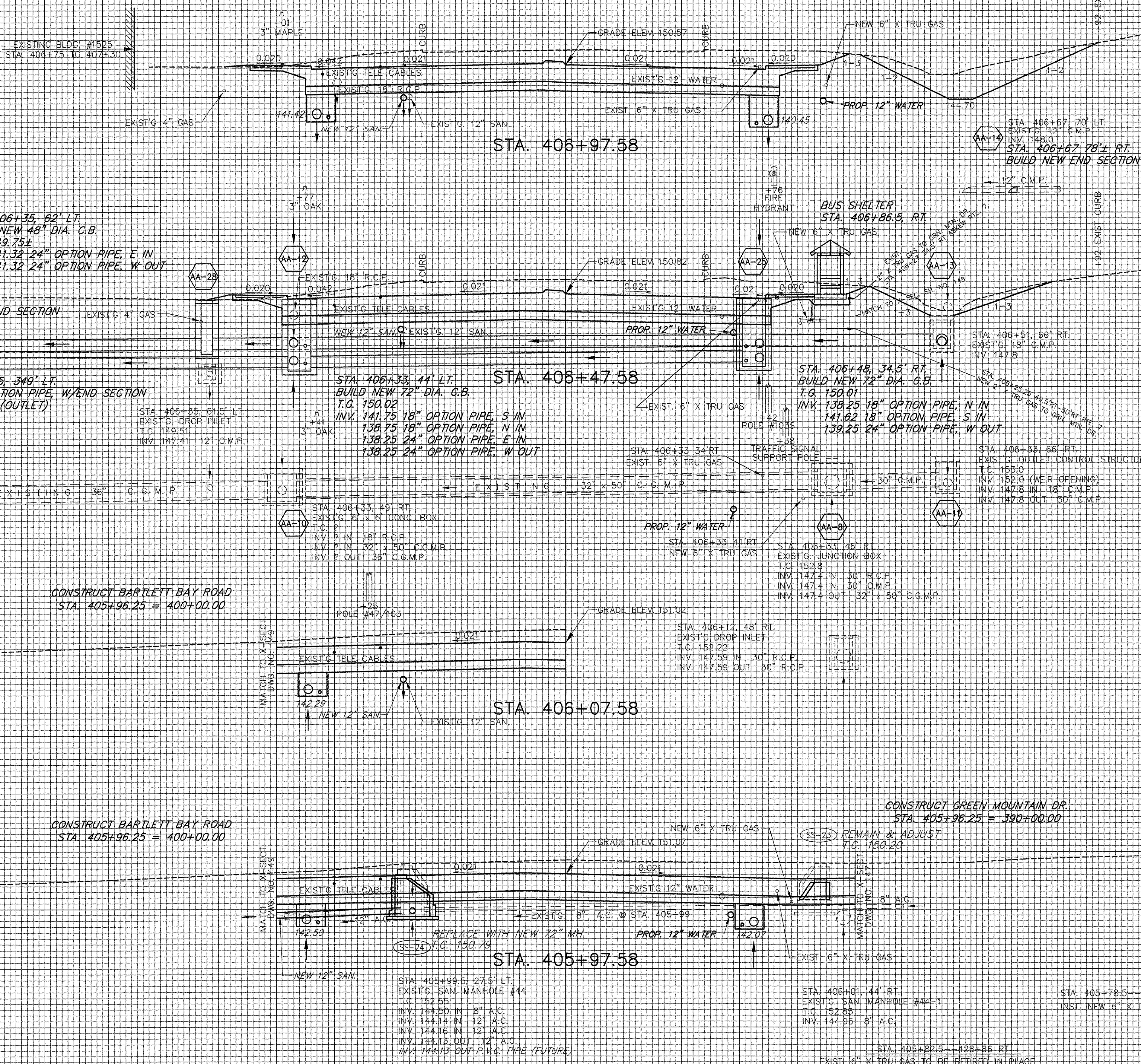


DATUM ELEV = 145.00

DATUM ELEV = 145.00

DATUM ELEV = 145.00

DATUM ELEV = 145.00



STA. 406+35, 62' LT.
 BUILD NEW 48" DIA. C.B.
 T.G. 149.75+
 INV. 141.32 24" OPTION PIPE, E IN
 INV. 141.32 24" OPTION PIPE, W OUT

STA. 405+68, 349' LT.
 NEW 24" OPTION PIPE, W/END SECTION
 INV. 135.34 (OUTLET)

STA. 405+65, 349' LT.
 NEW 24" OPTION PIPE, W/END SECTION
 INV. 135.34 (OUTLET)

STA. 406+35, 81.5' LT.
 EXIST'G DROP INLET
 T.G. 149.51
 INV. 147.41 12" C.M.P.

STA. 406+33, 44' LT.
 BUILD NEW 72" DIA. C.B.
 T.G. 150.02
 INV. 141.75 18" OPTION PIPE, S IN
 138.75 18" OPTION PIPE, N IN
 138.25 24" OPTION PIPE, E IN
 138.25 24" OPTION PIPE, W OUT

STA. 406+33, 34' RT.
 EXIST'G 6" X TRU GAS

STA. 406+48, 34.5' RT.
 BUILD NEW 72" DIA. C.B.
 T.G. 150.01
 INV. 138.25 18" OPTION PIPE, N IN
 141.62 18" OPTION PIPE, S IN
 139.25 24" OPTION PIPE, W OUT

STA. 406+33, 68' RT.
 EXIST'G OUTLET CONTROL STRUCTURE
 T.C. 153.0
 INV. 152.0 (WEIR OPENING)
 INV. 147.8 IN 18" C.M.P.
 INV. 147.8 OUT 30" C.M.P.

STA. 406+82, 65' RT.
 BUILD NEW END SECTION
 INV. 144.55 18" OPTION PIPE (INLET)

STA. 406+65, 65' RT.
 RESET EXIST'G 48" X 48" CONTROL STRUCTURE
 T.C. 147.20
 INV. 142.00 18" OPTION PIPE, N IN
 INV. 142.00 24" OPTION PIPE, S IN
 INV. 142.00 24" OPTION PIPE, W OUT

STA. 405+70, 350' LT.
 EXIST'G 36" C.G.M.P.
 INV. 135.20

CONSTRUCT BARTLETT BAY ROAD
 STA. 405+96.25 = 400+00.00

STA. 406+33, 41' RT.
 NEW 6" X TRU GAS

STA. 406+33, 46' RT.
 EXIST'G JUNCTION BOX
 T.C. 152.8
 INV. 147.4 IN 30" R.C.P.
 INV. 147.4 IN 30" C.M.P.
 INV. 147.4 OUT 32" X 50" C.G.M.P.

STA. 406+12, 48' RT.
 EXIST'G DROP INLET
 T.C. 152.22
 INV. 147.59 IN 30" R.C.P.
 INV. 147.59 OUT 30" R.C.P.

STA. 406+07.58

CONSTRUCT BARTLETT BAY ROAD
 STA. 405+96.25 = 400+00.00

CONSTRUCT GREEN MOUNTAIN DR.
 STA. 405+96.25 = 390+00.00

REPLACE WITH NEW 72" MH
 T.G. 150.79

STA. 405+97.58

STA. 405+99.5, 27.5' LT.
 EXIST'G SAN MANHOLE #44
 T.C. 152.55
 INV. 144.50 IN 8" A.C.
 INV. 144.14 IN 12" A.C.
 INV. 144.18 IN 12" A.C.
 INV. 144.13 OUT 12" A.C.
 INV. 144.13 OUT P.V.C. PIPE (FUTURE)

STA. 406+01, 44' RT.
 EXIST'G SAN MANHOLE #44-1
 T.G. 152.85
 INV. 144.95 8" A.C.

STA. 405+78.5 -- 416+25 RT.
 INST. NEW 6" X TRU GAS

STA. 405+82.5 -- 428+86 RT.
 EXIST'G 6" X TRU GAS TO BE RETIRED IN PLACE

