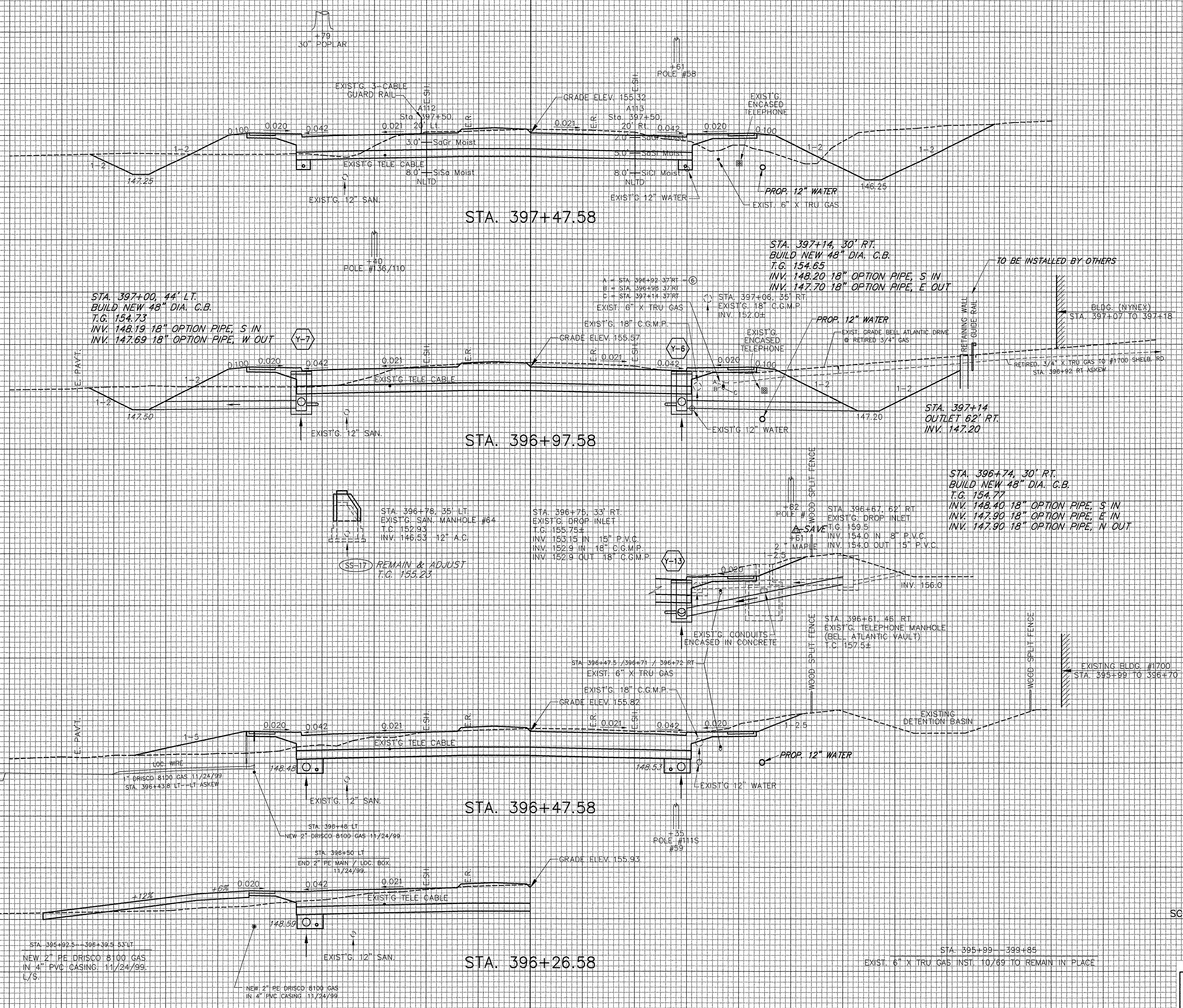


DATUM ELEV = 145.00

DATUM ELEV = 150.00

DATUM ELEV = 150.00

DATUM ELEV = 150.00



STA. 395+60.3 - 396+50.5 5.3' LT.
NEW 12" PE DRISCO 8100 GAS
IN 4" PVC CASING 11/24/99

STA. 395+92.5 - 396+39.5 53' LT.
NEW 2" PE DRISCO 8100 GAS
IN 4" PVC CASING 11/24/99

NEW 2" PE DRISCO 8100 GAS
IN 4" PVC CASING 11/24/99

STA. 398+48 LT
NEW 2" DRISCO 8100 GAS 11/24/99

STA. 398+50 LT
END 2" PE MAIN / LOC. BOX
11/24/99

STA. 395+99 - 396+85
EXIST. 6" X TRU GAS INST. 10/69 TO REMAIN IN PLACE

