

LIGHTING ITEMS

ITEM 678.21 - ELECTRICAL CONDUIT (2" PVC SCHEDULE 40)

384+79 LT (POLE NO. SB7) - 386+60 LT (POLE NO. SB9), 193 LF
 385+69 RT (POLE NO. SB8) - 387+00 RT, 137 LF

ITEM 678.23 - WIRED CONDUIT (2" PVC SCHEDULE 40)

381+00 LT - 381+61 LT (POLE NO. SB5), 67 LF
 381+00 RT - 382+46 RT (POLE NO. SB6), 152 LF
 381+61 LT (POLE NO. SB5) - 384+28 LT (L-31), 267 LF
 382+46 RT (POLE NO. SB6) - 383+13 RT (L-30), 67 LF
 384+35 RT (L-32) - 385+69 (POLE NO. SB8), 134 LF
 384+28 LT (L-31) - 384+79 LT (POLE NO. SB7), 51 LF
 386+60 LT (POLE NO. SB9) - 387+00 LT, 46 LF

POLE NO.	STATION	OFFSET	SIDE	LENGTH OF POLE	ARM	WALL THICK	BRK WAY	LUMINAIRE WATTS	TYPE	MOUNT HEIGHT	CONC. BASE	REMARKS
SB5	381+61	47'	LT.	33'	8'	.156	YES	150	III	35'	30" 20"x72"	TRUSS-TYPE SUPPORT ARM
SB6	382+46	33'	RT.	33'	8'	.156	YES	150	III	35'	30" 20"x72"	TRUSS-TYPE SUPPORT ARM
C3	383+80	48'	LT.									MOUNT TRUSS-TYPE SUPPORT ARM ON CANTILEVER #3
V1	383+93	55'	RT.	33'	8'	.156	YES	150	III	35'	30" 20"x72"	TRUSS-TYPE SUPPORT ARM
C4	384+27	44'	RT.		12'							MOUNT TRUSS-TYPE SUPPORT ARM ON CANTILEVER #4
SB7	384+79	47'	LT.	33'	8'	.156	YES	150	III	35'	30" 20"x72"	TRUSS-TYPE SUPPORT ARM
SB8	385+69	33'	RT.	33'	8'	.156	YES	150	III	35'	30" 20"x72"	TRUSS-TYPE SUPPORT ARM
SB9	386+60	47'	LT.	33'	8'	.156	YES	150	III	35'	30" 20"x72"	TRUSS-TYPE SUPPORT ARM

INTERCONNECT ITEMS

ITEM 678.20 (MOD.) - INTERCONNECTING CABLE (2" PVC SCHEDULE 40)

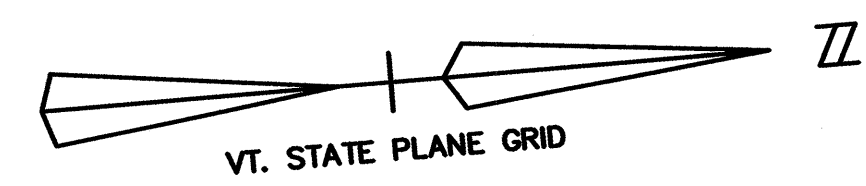
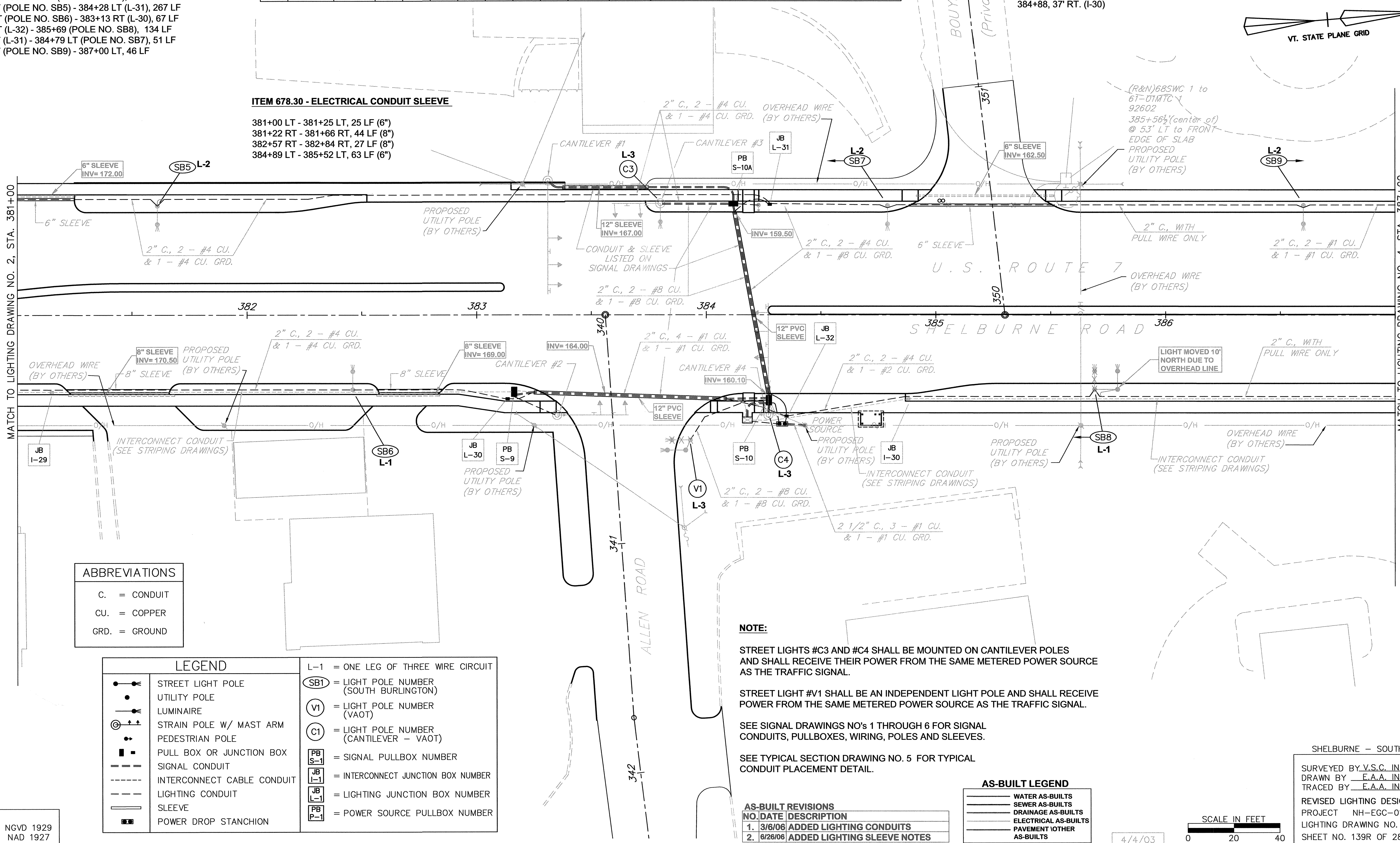
381+00 RT - 381+15 RT (I-29), 15 LF
 381+15 RT (I-29) - 383+16 RT (S-9), 201 LF
 384+88 RT (I-30) - 387+00 RT, 212 LF

ITEM 678.26 - JUNCTION BOX

381+15, 34' RT. (I-29)
 384+88, 37' RT. (I-30)

ITEM 678.30 - ELECTRICAL CONDUIT SLEEVE

381+00 LT - 381+25 LT, 25 LF (6")
 381+22 RT - 381+66 RT, 44 LF (8")
 382+57 RT - 382+84 RT, 27 LF (8")
 384+89 LT - 385+52 LT, 63 LF (6")



ABBREVIATIONS

C.	=	CONDUIT
CU.	=	COPPER
GRD.	=	GROUND

LEGEND

	STREET LIGHT POLE		SB1 = LIGHT POLE NUMBER (SOUTH BURLINGTON)
	UTILITY POLE		V1 = LIGHT POLE NUMBER (VAOT)
	LUMINAIRE		C1 = LIGHT POLE NUMBER (CANTILEVER - VAOT)
	STRAIN POLE W/ MAST ARM		PB S-1 = SIGNAL PULLBOX NUMBER
	PEDESTRIAN POLE		JB I-1 = INTERCONNECT JUNCTION BOX NUMBER
	PULL BOX OR JUNCTION BOX		JB L-1 = LIGHTING JUNCTION BOX NUMBER
	SIGNAL CONDUIT		PB P-1 = POWER SOURCE PULLBOX NUMBER
	INTERCONNECT CABLE CONDUIT		
	LIGHTING CONDUIT		
	SLEEVE		
	POWER DROP STANCHION		

NOTE:

STREET LIGHTS #C3 AND #C4 SHALL BE MOUNTED ON CANTILEVER POLES AND SHALL RECEIVE THEIR POWER FROM THE SAME METERED POWER SOURCE AS THE TRAFFIC SIGNAL.

STREET LIGHT #V1 SHALL BE AN INDEPENDENT LIGHT POLE AND SHALL RECEIVE POWER FROM THE SAME METERED POWER SOURCE AS THE TRAFFIC SIGNAL.

SEE SIGNAL DRAWINGS NO'S 1 THROUGH 6 FOR SIGNAL CONDUITS, PULLBOXES, WIRING, POLES AND SLEEVES.

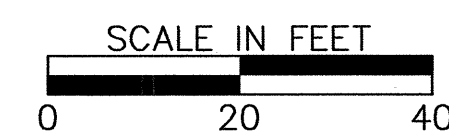
SEE TYPICAL SECTION DRAWING NO. 5 FOR TYPICAL CONDUIT PLACEMENT DETAIL.

AS-BUILT REVISIONS

NO.	DATE	DESCRIPTION
1.	3/6/06	ADDED LIGHTING CONDUITS
2.	6/26/06	ADDED LIGHTING SLEEVE NOTES

AS-BUILT LEGEND

	WATER AS-BUILTS
	SEWER AS-BUILTS
	DRAINAGE AS-BUILTS
	ELECTRICAL AS-BUILTS
	PAVEMENT/OTHER AS-BUILTS



SHELBURNE - SOUTH BURLINGTON

SURVEYED BY V.S.C. INC. DATE _____
 DRAWN BY E.A.A. INC. DATE _____
 TRACED BY E.A.A. INC. DATE _____

REVISED LIGHTING DESIGN
 PROJECT NH-EGC-019-4(28)
 LIGHTING DRAWING NO. 3
 SHEET NO. 139R OF 283

DATUM
 VERTICAL NGVD 1929
 HORIZONTAL NAD 1927