

LIGHTING ITEMS

ITEM 678.21 - ELECTRICAL CONDUIT (2" PVC SCHEDULE 40)

383+16 RT (S-9) - 384+27 RT (S-10), 117 LF
 384+79 LT (POLE NO. SB7) - 386+60 LT (POLE NO. SB9), 193 LF
 385+69 RT (POLE NO. SB8) - 387+00 RT, 137 LF

ITEM 678.23 - WIRED CONDUIT (2" PVC SCHEDULE 40)

381+00 LT - 381+61 LT (POLE NO. SB5), 67 LF
 381+00 RT - 382+46 RT (POLE NO. SB6), 152 LF
 381+61 LT (POLE NO. SB5) - 383+31 LT (CANTILEVER #1), 232 LF
 382+46 RT (POLE NO. SB6) - 383+16 (S-9), 79 LF
 383+93 RT (POLE NO. V1) - 384+27 (CANTILEVER #4), 40 LF
 384+27 RT (S-10) - 384+32 RT (STANCHION), 16 LF
 384+27 RT (S-10) - 385+69 (POLE NO. SB8), 151 LF
 384+22 LT (PED POLE) - 384+79 LT (POLE NO. SB7), 69 LF
 386+60 LT (POLE NO. SB9) - 387+00 LT, 46 LF

ITEM 678.23 - WIRED CONDUIT (2 1/2" PVC SCHEDULE 40)

384+32 RT (STANCHION) - 384+42 RT (POWER), 16 LF

ITEM 678.23 - WIRED CONDUIT (2" PVC SCHEDULE 80)

AT POWER DROP, ABOVE GROUND, 10 LF

POLE NO.	STATION	OFFSET	SIDE	LENGTH OF POLE	ARM	WALL THICK	BRK-WAY	LUMINAIRE WATTS	TYPE	MOUNT HEIGHT	CONC. BASE	REMARKS
SB5	381+61	47'	LT.	33'	8'	.156	YES	150	III	35'	20"x72"	TRUSS-TYPE SUPPORT ARM
SB6	382+46	33'	RT.	33'	8'	.156	YES	150	III	35'	20"x72"	TRUSS-TYPE SUPPORT ARM
C3	383+80	48'	LT.	8'								MOUNT TRUSS-TYPE SUPPORT ARM ON CANTILEVER #3
V1	383+93	55'	RT.	33'	8'	.156	YES	150	III	35'	20"x72"	TRUSS-TYPE SUPPORT ARM
C4	384+27	44'	RT.	12'								MOUNT TRUSS-TYPE SUPPORT ARM ON CANTILEVER #4
SB7	384+79	47'	LT.	33'	8'	.156	YES	150	III	35'	20"x72"	TRUSS-TYPE SUPPORT ARM
SB8	385+69	33'	RT.	33'	8'	.156	YES	150	III	35'	20"x72"	TRUSS-TYPE SUPPORT ARM
SB9	386+60	47'	LT.	33'	8'	.156	YES	150	III	35'	20"x72"	TRUSS-TYPE SUPPORT ARM

ITEM 678.30 - ELECTRICAL CONDUIT SLEEVE

381+00 LT - 381+25 LT, 25 LF (6")
 381+22 RT - 381+66 RT, 44 LF (8")
 382+57 RT - 382+84 RT, 27 LF (8")
 383+26 RT - 384+08 RT, 81 LF (12")
 384+89 LT - 385+52 LT, 63 LF (6")

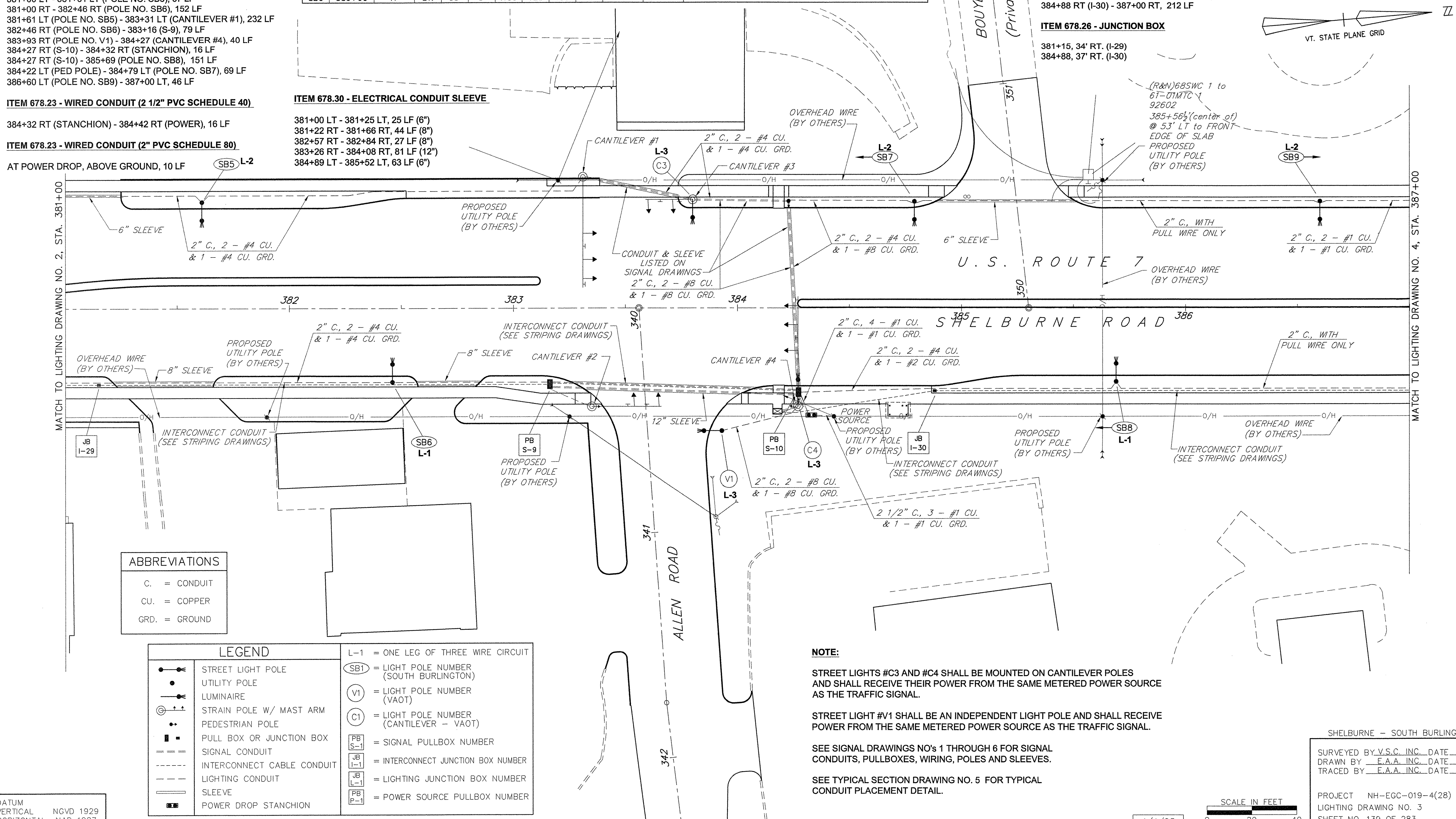
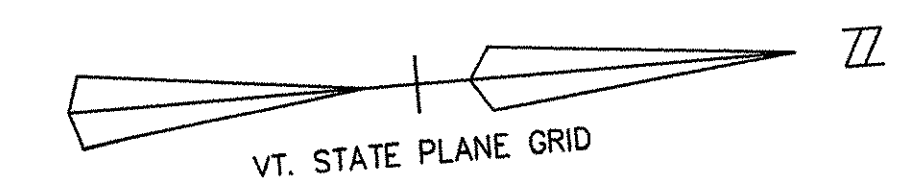
INTERCONNECT ITEMS

ITEM 678.20 (MOD.) - INTERCONNECTING CABLE (2" PVC SCHEDULE 40)

381+00 RT - 381+15 RT (I-29), 15 LF
 381+15 RT (I-29) - 383+16 RT (S-9), 201 LF
 383+16 (S-9) - 384+27 RT (S-10), 117 LF
 384+27 RT (S-10) - 384+27 RT (CANTILEVER #4), 9 LF
 384+18 RT (CONTROLLER) - 384+27 RT (CANTILEVER #4), 13 LF
 384+18 (CONTROLLER) - 384+88 RT (I-30), 74 LF
 384+88 RT (I-30) - 387+00 RT, 212 LF

ITEM 678.26 - JUNCTION BOX

381+15, 34' RT. (I-29)
 384+88, 37' RT. (I-30)



ABBREVIATIONS

C.	=	CONDUIT
CU.	=	COPPER
GRD.	=	GROUND

LEGEND

	STREET LIGHT POLE	L-1 = ONE LEG OF THREE WIRE CIRCUIT
	UTILITY POLE	(SB1) = LIGHT POLE NUMBER (SOUTH BURLINGTON)
	LUMINAIRE	(V1) = LIGHT POLE NUMBER (VAOT)
	STRAIN POLE W/ MAST ARM	(C1) = LIGHT POLE NUMBER (CANTILEVER - VAOT)
	PEDESTRIAN POLE	(PB S-1) = SIGNAL PULLBOX NUMBER
	PULL BOX OR JUNCTION BOX	(JB I-1) = INTERCONNECT JUNCTION BOX NUMBER
	SIGNAL CONDUIT	(JB L-1) = LIGHTING JUNCTION BOX NUMBER
	INTERCONNECT CABLE CONDUIT	(PB P-1) = POWER SOURCE PULLBOX NUMBER
	LIGHTING CONDUIT	
	SLEEVE	
	POWER DROP STANCHION	

NOTE:
 STREET LIGHTS #C3 AND #C4 SHALL BE MOUNTED ON CANTILEVER POLES AND SHALL RECEIVE THEIR POWER FROM THE SAME METERED POWER SOURCE AS THE TRAFFIC SIGNAL.
 STREET LIGHT #V1 SHALL BE AN INDEPENDENT LIGHT POLE AND SHALL RECEIVE POWER FROM THE SAME METERED POWER SOURCE AS THE TRAFFIC SIGNAL.

SEE SIGNAL DRAWINGS NO'S 1 THROUGH 6 FOR SIGNAL CONDUITS, PULLBOXES, WIRING, POLES AND SLEEVES.
 SEE TYPICAL SECTION DRAWING NO. 5 FOR TYPICAL CONDUIT PLACEMENT DETAIL.

DATUM
 VERTICAL NGVD 1929
 HORIZONTAL NAD 1927

4/4/03
 SCALE IN FEET
 0 20 40

SHELBURNE - SOUTH BURLINGTON
 SURVEYED BY V.S.C. INC. DATE _____
 DRAWN BY E.A.A. INC. DATE _____
 TRACED BY E.A.A. INC. DATE _____
 PROJECT NH-EGC-019-4(28)
 LIGHTING DRAWING NO. 3
 SHEET NO. 139 OF 283