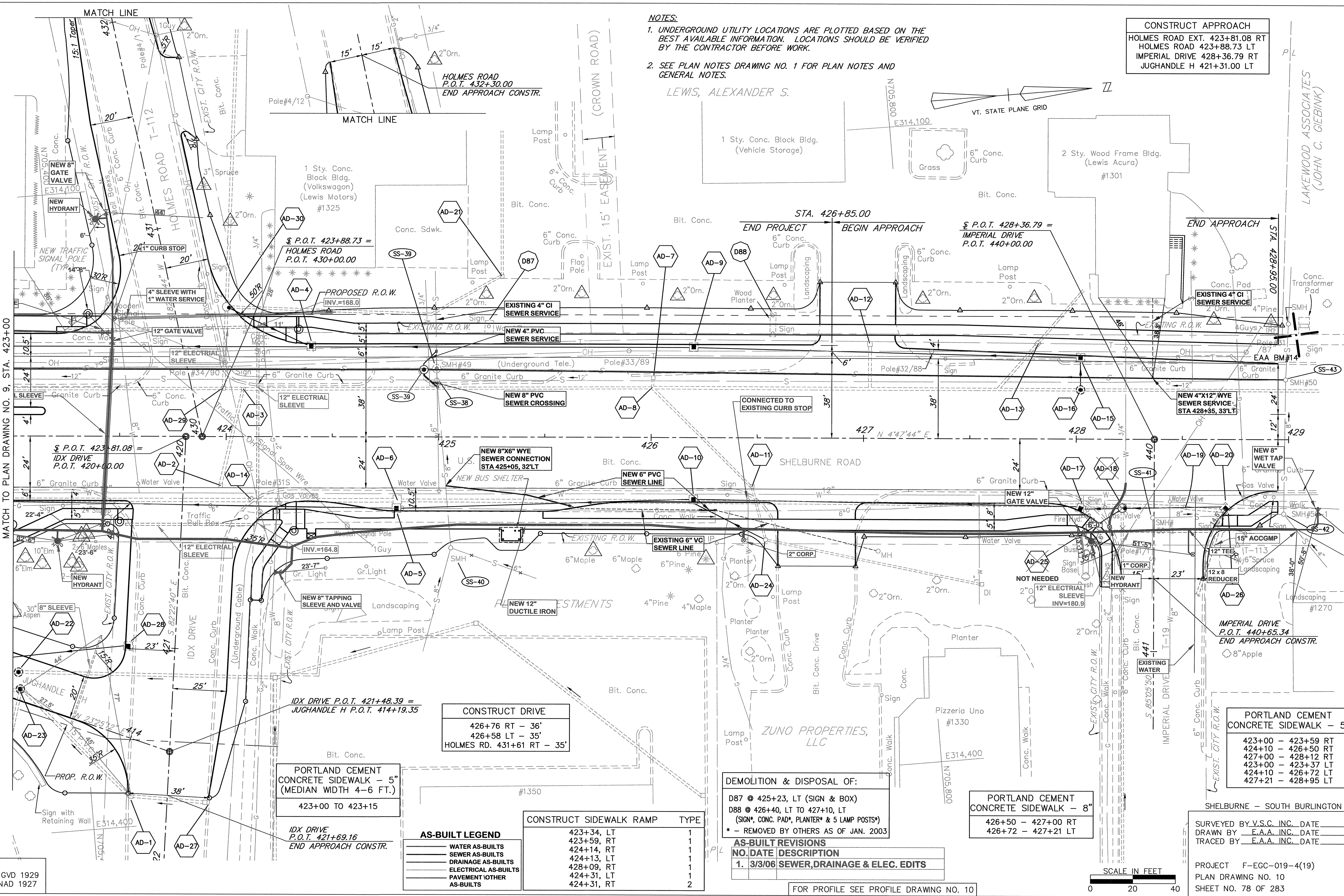


NOTES:

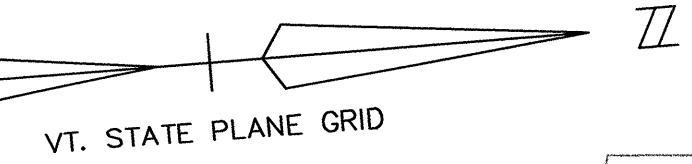
1. UNDERGROUND UTILITY LOCATIONS ARE PLOTTED BASED ON THE BEST AVAILABLE INFORMATION. LOCATIONS SHOULD BE VERIFIED BY THE CONTRACTOR BEFORE WORK.
2. SEE PLAN NOTES DRAWING NO. 1 FOR PLAN NOTES AND GENERAL NOTES.

LEWIS, ALEXANDER S.

CONSTRUCT APPROACH
 HOLMES ROAD EXT. 423+81.08 RT
 HOLMES ROAD 423+88.73 LT
 IMPERIAL DRIVE 428+36.79 RT
 JUGHANDLE H 421+31.00 LT



MATCH TO PLAN DRAWING NO. 9, STA. 423+00



LAKEWOOD ASSOCIATES
(JOHN C. GIEBINK)

CONSTRUCT DRIVE
 426+76 RT - 36'
 426+58 LT - 35'
 HOLMES RD. 431+61 RT - 35'

PORTLAND CEMENT CONCRETE SIDEWALK - 5"
 (MEDIAN WIDTH 4-6 FT.)
 423+00 TO 423+15

PORTLAND CEMENT CONCRETE SIDEWALK - 5"
 423+00 TO 423+15

PORTLAND CEMENT CONCRETE SIDEWALK - 5"
 423+00 TO 423+15

AS-BUILT LEGEND

---	WATER AS-BUILTS
---	SEWER AS-BUILTS
---	DRAINAGE AS-BUILTS
---	ELECTRICAL AS-BUILTS
---	PAVEMENT / OTHER AS-BUILTS

CONSTRUCT SIDEWALK RAMP

NO.	DATE	DESCRIPTION	TYPE
1	3/3/06	SEWER, DRAINAGE & ELEC. EDITS	1
2			2

DEMOLITION & DISPOSAL OF:
 D87 @ 425+23, LT (SIGN & BOX)
 D88 @ 426+40, LT TO 427+10, LT
 (SIGN*, CONC. PAD*, PLANTER* & 5 LAMP POSTS*)
 * - REMOVED BY OTHERS AS OF JAN. 2003

AS-BUILT REVISIONS

NO.	DATE	DESCRIPTION
1.	3/3/06	SEWER, DRAINAGE & ELEC. EDITS

PORTLAND CEMENT CONCRETE SIDEWALK - 8"
 426+50 - 427+00 RT
 426+72 - 427+21 LT

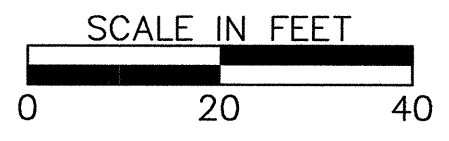
PORTLAND CEMENT CONCRETE SIDEWALK - 5"
 423+00 - 423+59 RT
 424+10 - 426+50 RT
 427+00 - 428+12 RT
 423+00 - 423+37 LT
 424+10 - 426+72 LT
 427+21 - 428+95 LT

SHELburne - SOUTH BURLINGTON

SURVEYED BY V.S.C. INC. DATE _____
 DRAWN BY E.A.A. INC. DATE _____
 TRACED BY E.A.A. INC. DATE _____

PROJECT F-EGC-019-4(19)
 PLAN DRAWING NO. 10
 SHEET NO. 78 OF 283

DATUM
 VERTICAL NGVD 1929
 HORIZONTAL NAD 1927



FOR PROFILE SEE PROFILE DRAWING NO. 10

K:\633008 (US Res 7) Shelburne Rd\AS-BUILT\WATER-SEWER\AS-BUILT PL-32_4_10.DWG, Layout1, 9/12/2008 1:28:00 PM, parmasa, W:\44-60\VT-FBR\44-1055cm Ext