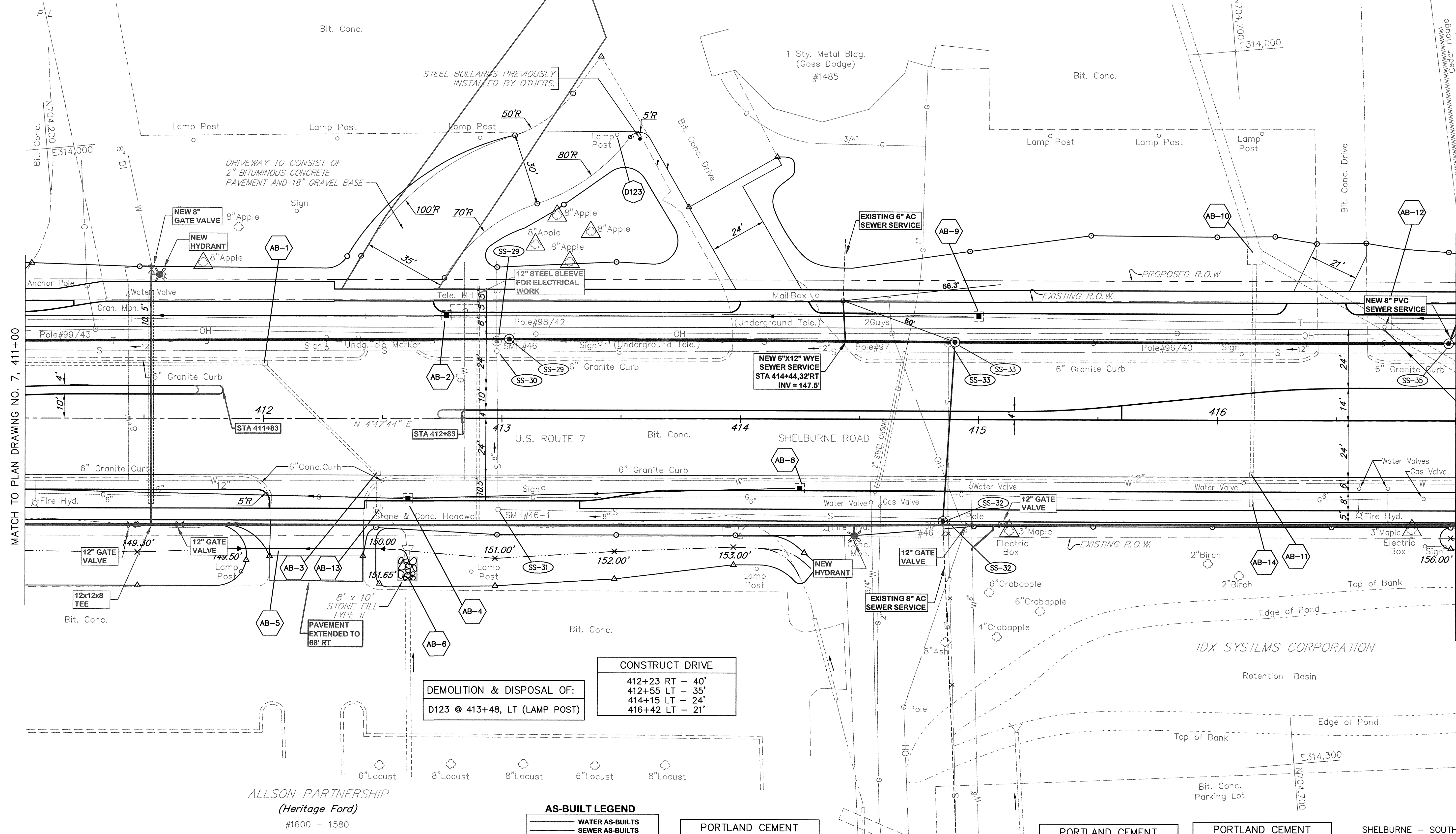
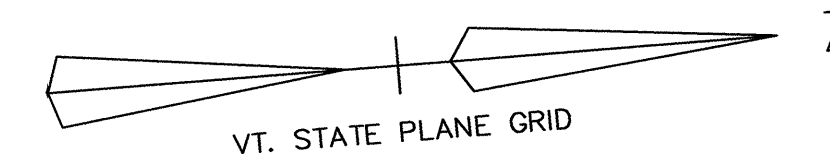


HOAR, DOUGLAS W. & CHERYL A.



MATCH TO PLAN DRAWING NO. 7, 411+00

MATCH TO PLAN DRAWING NO. 9, 417+00

DEMOLITION & DISPOSAL OF:
 D123 @ 413+48, LT (LAMP POST)

CONSTRUCT DRIVE
 412+23 RT - 40'
 412+55 LT - 35'
 414+15 LT - 24'
 416+42 LT - 21'

AS-BUILT REVISIONS

NO.	DATE	DESCRIPTION
1.	3/3/06	UTILITIES, & PAV. EDITS

AS-BUILT LEGEND

—	WATER AS-BUILTS
—	SEWER AS-BUILTS
—	DRAINAGE AS-BUILTS
—	ELECTRICAL AS-BUILTS
—	PAVEMENT/OTHER AS-BUILTS

PORTLAND CEMENT CONCRETE SIDEWALK - 5"

411+00 - 411+96	RT
412+50 - 417+00	RT
411+00 - 412+23	LT
412+78 - 413+89	LT
414+36 - 416+22	LT
416+61 - 417+00	LT

PORTLAND CEMENT CONCRETE SIDEWALK - 8"

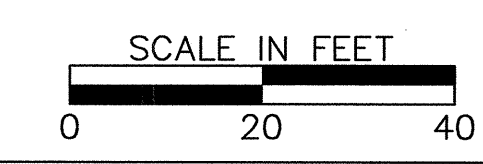
411+96 - 412+50	RT
412+23 - 412+78	LT
413+89 - 414+36	LT
416+22 - 416+61	LT

PORTLAND CEMENT CONCRETE SIDEWALK - 5" (MEDIAN WIDTH 4-6 FT.)

411+00 TO 411+73
412+73 TO 415+60

NOTES:
 1. UNDERGROUND UTILITY LOCATIONS ARE PLOTTED BASED ON THE BEST AVAILABLE INFORMATION. LOCATIONS SHOULD BE VERIFIED BY THE CONTRACTOR BEFORE WORK.
 2. SEE PLAN NOTES DRAWING NO. 1 FOR PLAN NOTES AND GENERAL NOTES.

DATUM
 VERTICAL NGVD 1929
 HORIZONTAL NAD 1927



FOR PROFILE SEE PROFILE DRAWING NO. 8

SHELBURNE - SOUTH BURLINGTON
 SURVEYED BY V.S.C. INC. DATE _____
 DRAWN BY E.A.A. INC. DATE _____
 TRACED BY E.A.A. INC. DATE _____
 PROJECT NH-EGC-019-4(28)
 PLAN DRAWING NO. 8
 SHEET NO. 76 OF 283

K:\GIS\30008 [US Rte 7 Shelburne Water Sewer] SEVERAS BUILT PL-30_4_08.DWG, layout1, 9/12/2006 11:39:42 AM, parmasa, 14x34x40117-BRL-HP1055m East