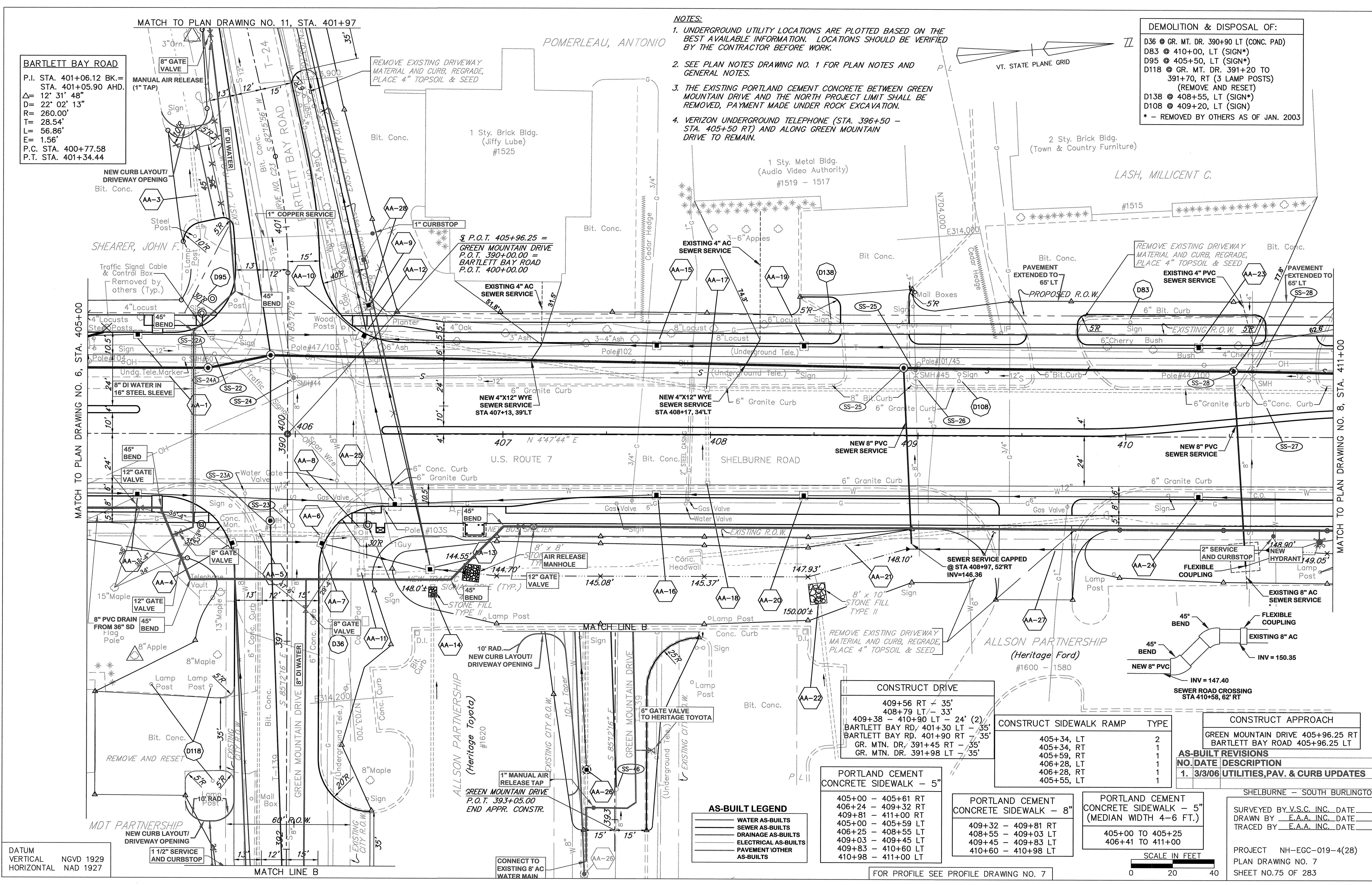


BARTLETT BAY ROAD
 P.I. STA. 401+06.12 BK. =
 STA. 401+05.90 AHD.
 $\Delta = 12' 31' 48''$
 $D = 22' 02' 13''$
 $R = 260.00'$
 $T = 28.54'$
 $L = 56.86'$
 $E = 1.56'$
 P.C. STA. 400+77.58
 P.T. STA. 401+34.44

- NOTES:**
- UNDERGROUND UTILITY LOCATIONS ARE PLOTTED BASED ON THE BEST AVAILABLE INFORMATION. LOCATIONS SHOULD BE VERIFIED BY THE CONTRACTOR BEFORE WORK.
 - SEE PLAN NOTES DRAWING NO. 1 FOR PLAN NOTES AND GENERAL NOTES.
 - THE EXISTING PORTLAND CEMENT CONCRETE BETWEEN GREEN MOUNTAIN DRIVE AND THE NORTH PROJECT LIMIT SHALL BE REMOVED, PAYMENT MADE UNDER ROCK EXCAVATION.
 - VERIZON UNDERGROUND TELEPHONE (STA. 396+50 - STA. 405+50 RT) AND ALONG GREEN MOUNTAIN DRIVE TO REMAIN.

DEMOLITION & DISPOSAL OF:

- D36 @ GR. MT. DR. 390+90 LT (CONC. PAD)
- D95 @ 410+00, LT (SIGN*)
- D95 @ 405+50, LT (SIGN*)
- D118 @ GR. MT. DR. 391+20 TO 391+70, RT (3 LAMP POSTS) (REMOVE AND RESET)
- D138 @ 408+55, LT (SIGN*)
- D108 @ 409+20, LT (SIGN)
- * - REMOVED BY OTHERS AS OF JAN. 2003



DATUM
 VERTICAL NGVD 1929
 HORIZONTAL NAD 1927

AS-BUILT LEGEND

- WATER AS-BUILTS
- SEWER AS-BUILTS
- DRAINAGE AS-BUILTS
- ELECTRICAL AS-BUILTS
- PAVEMENT OTHER AS-BUILTS

PORTLAND CEMENT CONCRETE SIDEWALK - 5"

- 405+00 - 405+61 RT
- 406+24 - 409+32 RT
- 409+81 - 411+00 RT
- 405+00 - 405+59 LT
- 406+25 - 408+55 LT
- 409+03 - 409+45 LT
- 409+83 - 410+60 LT
- 410+98 - 411+00 LT

PORTLAND CEMENT CONCRETE SIDEWALK - 8"

- 409+32 - 409+81 RT
- 408+55 - 409+03 LT
- 409+45 - 409+83 LT
- 410+60 - 410+98 LT

PORTLAND CEMENT CONCRETE SIDEWALK - 5" (MEDIAN WIDTH 4-6 FT.)

- 405+00 TO 405+25
- 406+41 TO 411+00

CONSTRUCT DRIVE

- 409+56 RT - 35'
- 408+79 LT - 33'
- 409+38 - 410+90 LT - 24' (2)
- BARTLETT BAY RD, 401+30 LT - 35'
- BARTLETT BAY RD, 401+90 RT - 35'
- GR. MTN. DR, 391+45 RT - 35'
- GR. MTN. DR, 391+98 LT - 35'

CONSTRUCT SIDEWALK RAMP

TYPE	TYPE
405+34, LT	2
405+34, RT	1
405+59, RT	1
406+28, LT	1
406+28, RT	1
405+55, LT	1

CONSTRUCT APPROACH

- GREEN MOUNTAIN DRIVE 405+96.25 RT
- BARTLETT BAY ROAD 405+96.25 LT

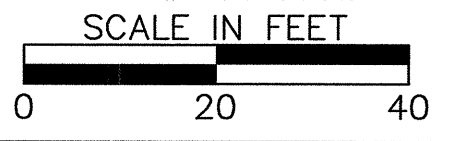
AS-BUILT REVISIONS

NO.	DATE	DESCRIPTION
1.	3/3/06	UTILITIES, PAV. & CURB UPDATES

SHELburne - SOUTH BURLINGTON

SURVEYED BY V.S.C. INC. DATE _____
 DRAWN BY E.A.A. INC. DATE _____
 TRACED BY E.A.A. INC. DATE _____

PROJECT NH-EGC-019-4(28)
 PLAN DRAWING NO. 7
 SHEET NO.75 OF 283



FOR PROFILE SEE PROFILE DRAWING NO. 7

K:\630008 (US Rte 7 Shelburne Rd)\AS-BUILTS\WATER-SEWER\AS BUILT PL_28_4_07.DWG, Layout1, 9/12/2006 11:37:52 AM, parmeta, lvk-brl401\VT-BRL-HP1055cm Etek