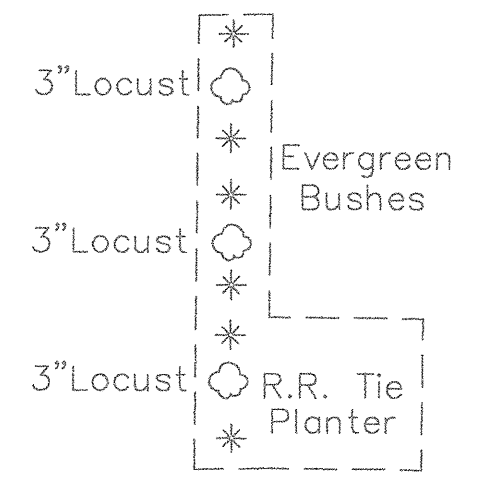


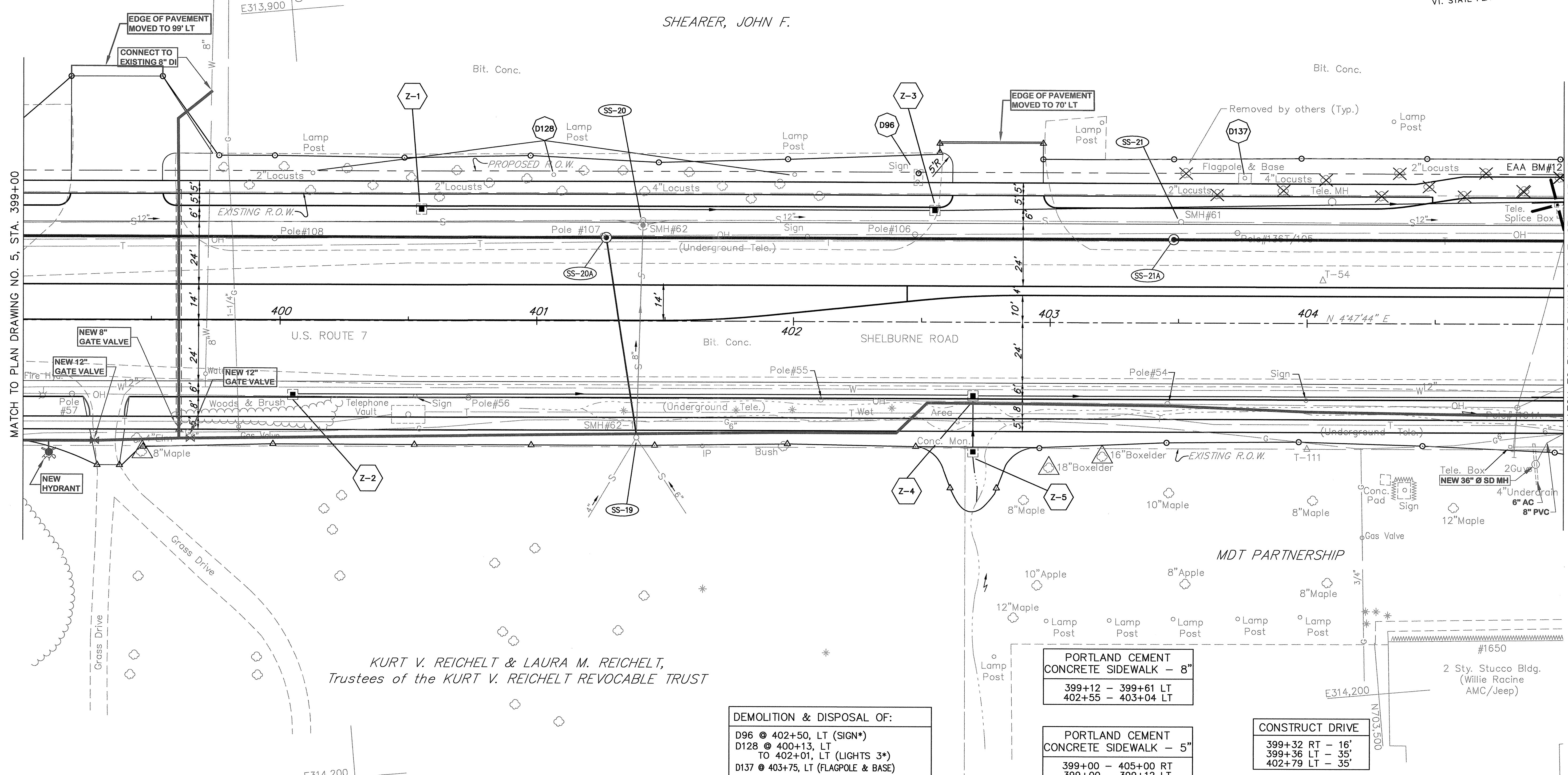
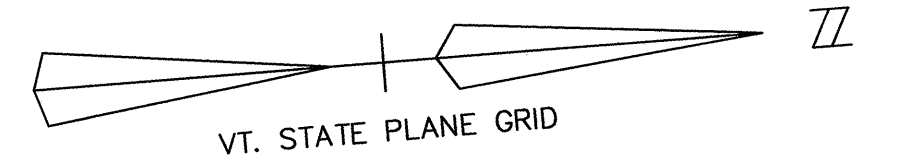
1 Sty. Conc. Block Bldg.
(Shearer Chevrolet)

#1675

SHEARER, JOHN F.



N703,500
E313,900



MATCH TO PLAN DRAWING NO. 5, STA. 399+00

MATCH TO PLAN DRAWING NO. 7, STA. 405+00

KURT V. REICHELDT & LAURA M. REICHELDT,
Trustees of the KURT V. REICHELDT REVOCABLE TRUST

DEMOLITION & DISPOSAL OF:
 D96 @ 402+50, LT (SIGN*)
 D128 @ 400+13, LT
 TO 402+01, LT (LIGHTS 3*)
 D137 @ 403+75, LT (FLAGPOLE & BASE)
 * - REMOVED BY OTHERS AS OF JAN. 2003

AS-BUILT LEGEND

---	WATER AS-BUILTS
---	SEWER AS-BUILTS
---	DRAINAGE AS-BUILTS
---	ELECTRICAL AS-BUILTS
---	PAVEMENT/OTHER AS-BUILTS

AS-BUILT REVISIONS

NO.	DATE	DESCRIPTION
1.	3/3/06	UTILITIES & PAVEMENT ADDED
2.	8/9/06	STORM DRAIN NOTES UPDATED

PORTLAND CEMENT
CONCRETE SIDEWALK - 8"
 399+12 - 399+61 LT
 402+55 - 403+04 LT

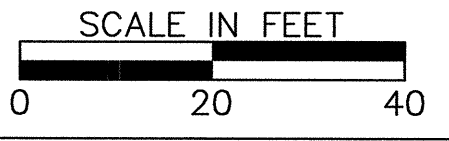
PORTLAND CEMENT
CONCRETE SIDEWALK - 5"
 399+00 - 405+00 RT
 399+00 - 399+12 LT
 399+61 - 402+55 LT
 403+04 - 405+00 LT

CONSTRUCT DRIVE
 399+32 RT - 16'
 399+36 LT - 35'
 402+79 LT - 35'

PORTLAND CEMENT
CONCRETE SIDEWALK - 5"
(MEDIAN WIDTH 4-6 FT.)
 402+44 TO 405+00

- NOTES:**
- UNDERGROUND UTILITY LOCATIONS ARE PLOTTED BASED ON THE BEST AVAILABLE INFORMATION. LOCATIONS SHOULD BE VERIFIED BY THE CONTRACTOR BEFORE WORK.
 - SEE PLAN NOTES DRAWING NO. 1 FOR PLAN NOTES AND GENERAL NOTES.
 - VERIZON UNDERGROUND TELEPHONE (STA. 396+50 - STA. 405+50 RT) TO REMAIN.

DATUM
 VERTICAL NGVD 1929
 HORIZONTAL NAD 1927



FOR PROFILE SEE PROFILE DRAWING NO. 6

SHELBURNE - SOUTH BURLINGTON

SURVEYED BY V.S.C. INC. DATE _____
 DRAWN BY E.A.A. INC. DATE _____
 TRACED BY E.A.A. INC. DATE _____

PROJECT NH-EGC-019-4(28)
 PLAN DRAWING NO. 6
 SHEET NO. 74 OF 283

K:\6330008 [US Rte 7 Shelburne Water-Severas] BUILT PL-28_4_06.DWG. Layout1, 9/12/2006 11:31:04 AM, parmasa, 1\4-bi-h6\VT-BRL-HP1055cm Esri