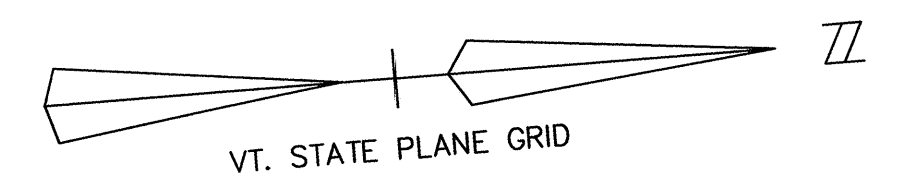
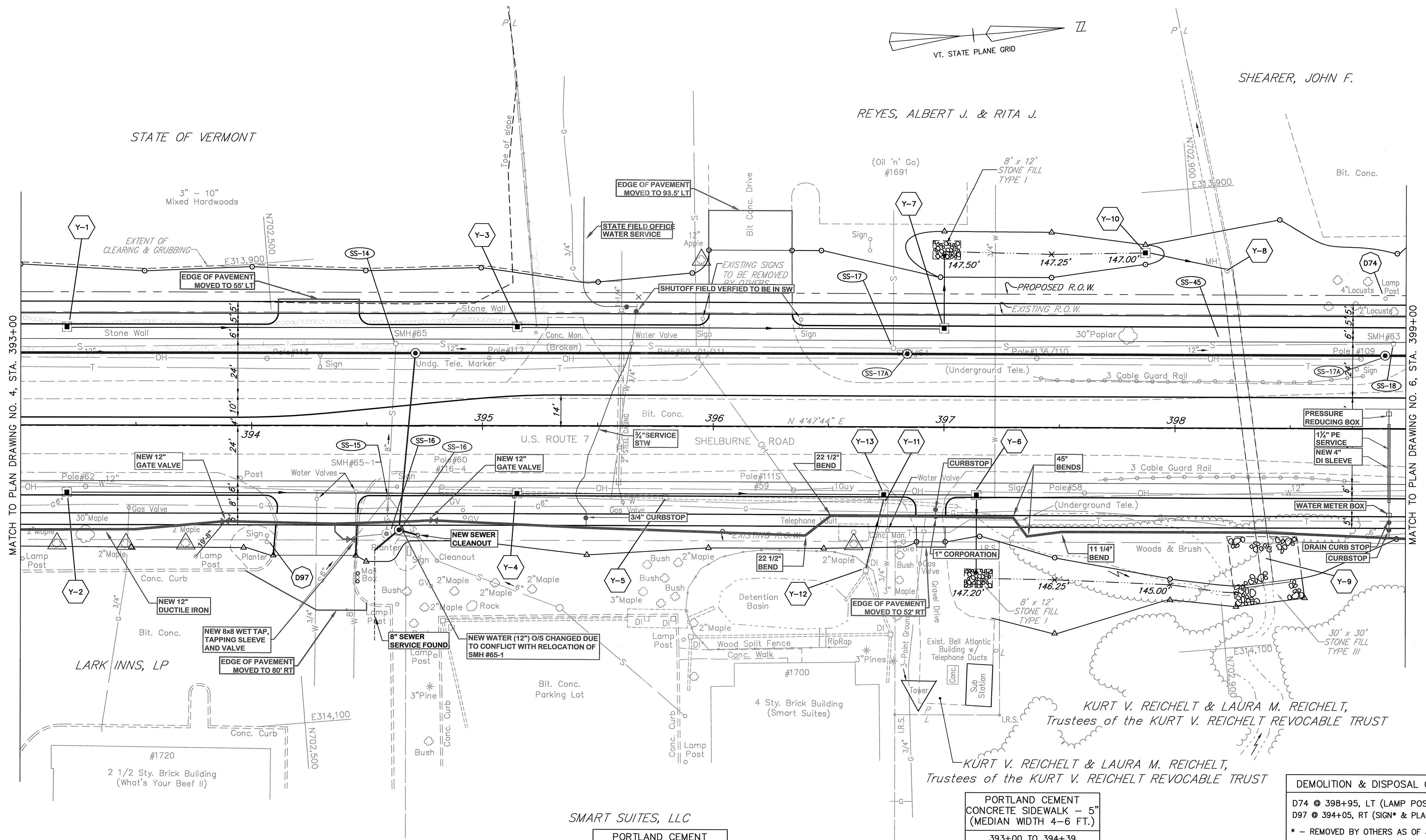


STATE OF VERMONT



SHEARER, JOHN F.

REYES, ALBERT J. & RITA J.



MATCH TO PLAN DRAWING NO. 4, STA. 393+00

MATCH TO PLAN DRAWING NO. 6, STA. 399+00

- NOTES:**
- UNDERGROUND UTILITY LOCATIONS ARE PLOTTED BASED ON THE BEST AVAILABLE INFORMATION. LOCATIONS SHOULD BE VERIFIED BY THE CONTRACTOR BEFORE WORK.
 - SEE PLAN NOTES DRAWING NO. 1 FOR PLAN NOTES AND GENERAL NOTES.
 - VERIZON UNDERGROUND TELEPHONE (STA. 396+50 - STA. 405+50 RT) TO REMAIN.

DATUM
 VERTICAL NGVD 1929
 HORIZONTAL NAD 1927

AS-BUILT REVISIONS

NO.	DATE	DESCRIPTION
1.	3/1/06	SEWER, WATER & PAV. CHANGES
2.	8/9/06	IRRIGATION ADDED

PORTLAND CEMENT
 CONCRETE SIDEWALK - 8"

394+05 - 394+54 RT
 396+83 - 397+09 RT
 394+05 - 394+54 LT
 395+91 - 396+41 LT

PORTLAND CEMENT
 CONCRETE SIDEWALK - 5"

393+00 - 394+05 RT
 394+54 - 396+83 RT
 397+09 - 399+00 RT
 393+00 - 394+05 LT
 394+54 - 395+91 LT
 396+41 - 399+00 LT

PORTLAND CEMENT
 CONCRETE SIDEWALK - 5"
 (MEDIAN WIDTH 4-6 FT.)

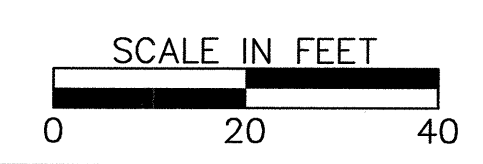
393+00 TO 394+39

AS-BUILT LEGEND

---	WATER AS-BUILTS
---	SEWER AS-BUILTS
---	DRAINAGE AS-BUILTS
---	ELECTRICAL AS-BUILTS
---	PAVEMENT/OTHER AS-BUILTS

CONSTRUCT DRIVE

394+29 RT - 35'
 394+29 LT - 35'
 396+16 LT - 36'
 396+96 RT - 12'



FOR PROFILE SEE PROFILE DRAWING NO. 5

DEMOLITION & DISPOSAL OF:

D74 @ 398+95, LT (LAMP POST*)
 D97 @ 394+05, RT (SIGN* & PLANTER)

* - REMOVED BY OTHERS AS OF JAN. 2003

SHELBURNE - SOUTH BURLINGTON

SURVEYED BY Y.S.C. INC. DATE _____
 DRAWN BY E.A.A. INC. DATE _____
 TRACED BY E.A.A. INC. DATE _____

PROJECT NH-EGC-019-4(28)
 PLAN DRAWING NO. 5
 SHEET NO. 73 OF 283

K:\630008 US Rte 7 Shelburne 07\AS-BUILT\WATER-SEWER\AS BUILT PL-27_4_05.DWG. Layout1, 9/1/2006 10:42:02 AM, parmalia, 1\y-bi-60\VT-BRL-HP\055cm East