

CONSTRUCT SIDEWALK RAMP	TYPE
390+07, RT	1
390+56, RT	1
390+69, LT	1
390+69, RT	2

PORTLAND CEMENT  
CONCRETE SIDEWALK - 5"  
387+00 - 390+10 RT  
390+53 - 393+00 RT  
387+00 - 390+08 LT  
390+57 - 393+00 LT

CONSTRUCT DRIVE  
389+98 LT-390+60 LT - 35'

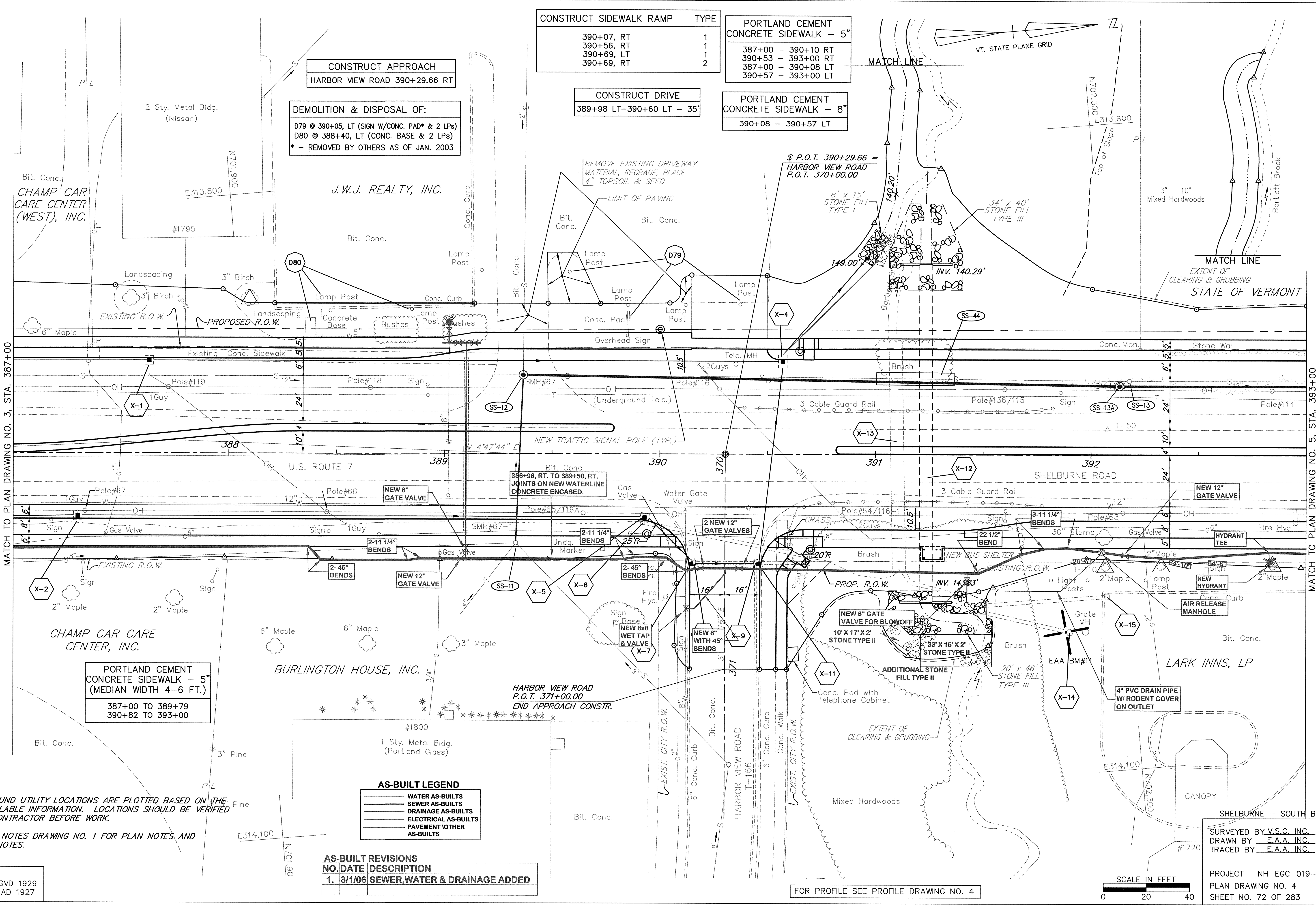
PORTLAND CEMENT  
CONCRETE SIDEWALK - 8"  
390+08 - 390+57 LT

CONSTRUCT APPROACH  
HARBOR VIEW ROAD 390+29.66 RT

DEMOLITION & DISPOSAL OF:  
D79 @ 390+05, LT (SIGN W/CONC. PAD\* & 2 LPs)  
D80 @ 388+40, LT (CONC. BASE & 2 LPs)  
\* - REMOVED BY OTHERS AS OF JAN. 2003

REMOVE EXISTING DRIVEWAY  
MATERIAL, REGRADE, PLACE  
4" TOPSOIL & SEED

§ P.O.T. 390+29.66 =  
HARBOR VIEW ROAD  
P.O.T. 370+00.00



MATCH TO PLAN DRAWING NO. 3, STA. 387+00

MATCH TO PLAN DRAWING NO. 5, STA. 393+00

- NOTES:**
- UNDERGROUND UTILITY LOCATIONS ARE PLOTTED BASED ON THE BEST AVAILABLE INFORMATION. LOCATIONS SHOULD BE VERIFIED BY THE CONTRACTOR BEFORE WORK.
  - SEE PLAN NOTES DRAWING NO. 1 FOR PLAN NOTES AND GENERAL NOTES.

**AS-BUILT LEGEND**

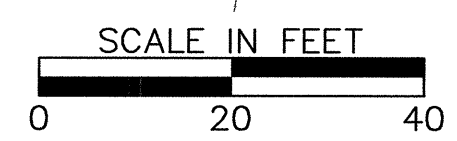
	WATER AS-BUILTS
	SEWER AS-BUILTS
	DRAINAGE AS-BUILTS
	ELECTRICAL AS-BUILTS
	PAVEMENT/OTHER AS-BUILTS

**AS-BUILT REVISIONS**

NO.	DATE	DESCRIPTION
1.	3/1/06	SEWER, WATER & DRAINAGE ADDED

DATUM  
VERTICAL NGVD 1929  
HORIZONTAL NAD 1927

FOR PROFILE SEE PROFILE DRAWING NO. 4



SURVEYED BY V.S.C. INC. DATE \_\_\_\_\_  
DRAWN BY E.A.A. INC. DATE \_\_\_\_\_  
TRACED BY E.A.A. INC. DATE \_\_\_\_\_

PROJECT NH-EGC-019-4(28)  
PLAN DRAWING NO. 4  
SHEET NO. 72 OF 283