

DEMOLITION & DISPOSAL OF:

- D76 @ 383+05, RT TO 383+40, RT (4 LPs, SIGN* & FENCE*)
- D77 @ 383+70, LT (SIGN* & PLANTER)
- D78 @ 385+05, LT (SIGN* & PLANTER)
- D91 @ 380+90, RT (SIGN & PLANTER)
- D92 @ 381+85, RT TO 382+50, RT (LP* & FENCE*)
- D113 @ 386+45, LT (SIGN* & PLANTER*)
- D136 @ 383+10, RT (4 PAY PHONES*)
- * - REMOVED BY OTHERS AS OF JAN. 2003

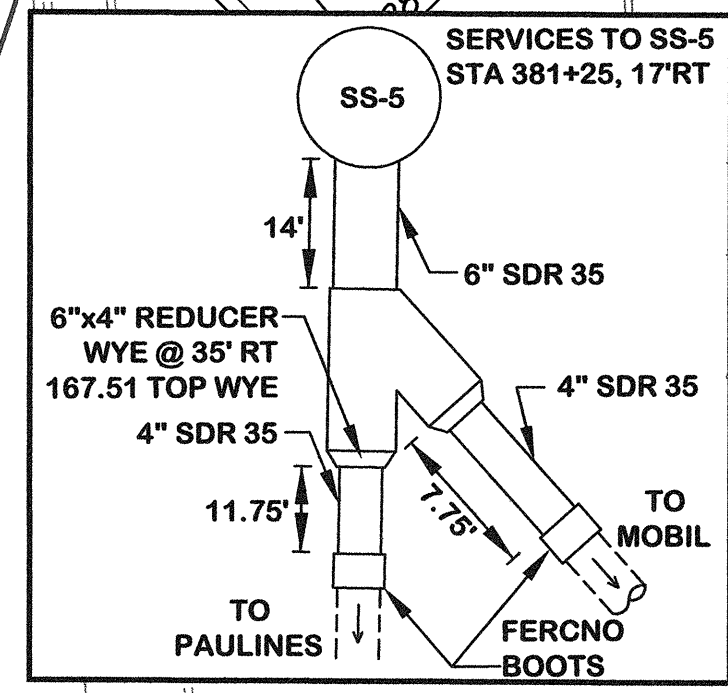
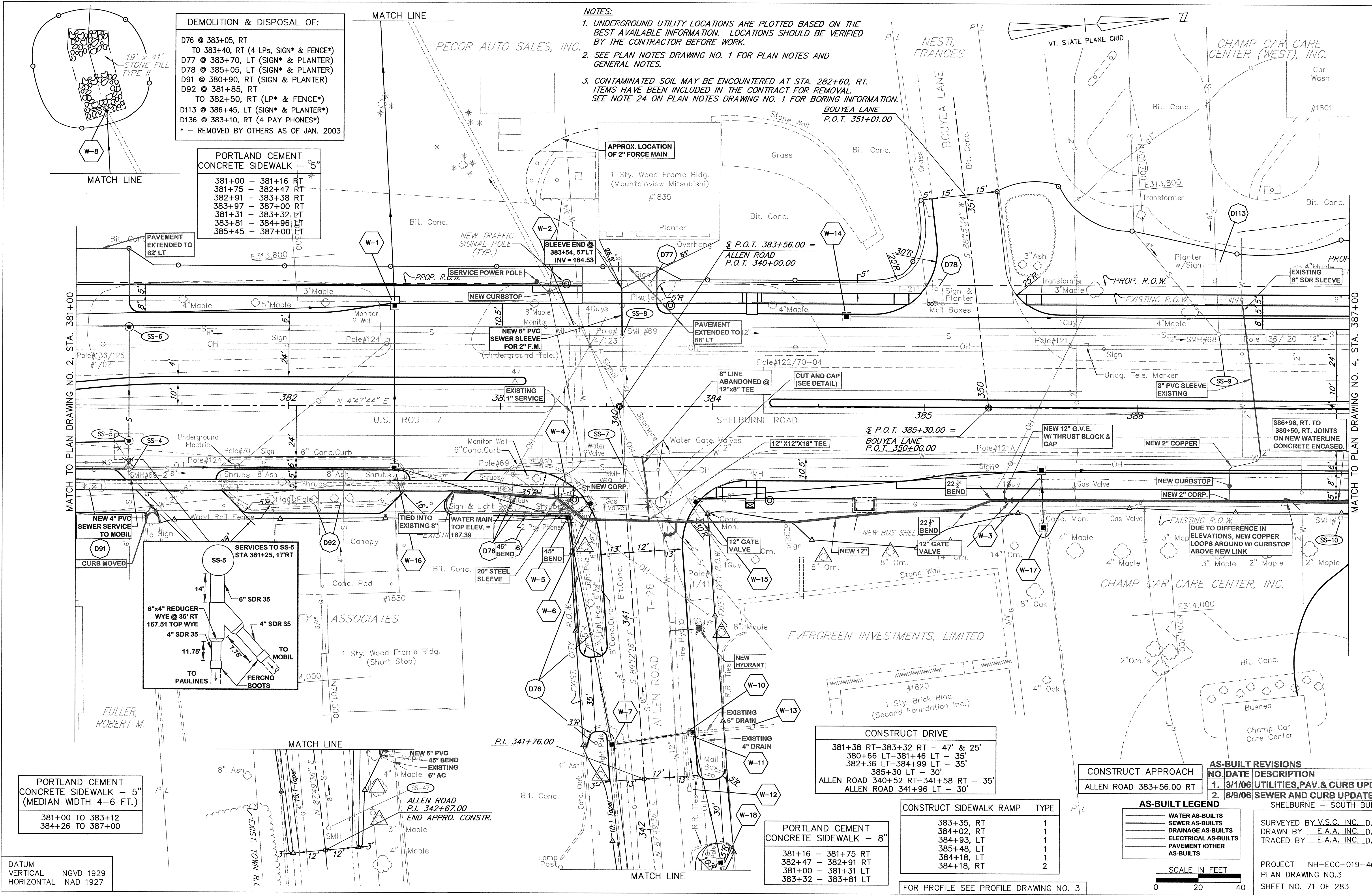
PORTLAND CEMENT CONCRETE SIDEWALK - 5"

- 381+00 - 381+16 RT *
- 381+75 - 382+47 RT
- 382+91 - 383+38 RT
- 383+97 - 387+00 RT
- 381+31 - 383+32 LT
- 383+81 - 384+96 LT
- 385+45 - 387+00 LT

NOTES:

- UNDERGROUND UTILITY LOCATIONS ARE PLOTTED BASED ON THE BEST AVAILABLE INFORMATION. LOCATIONS SHOULD BE VERIFIED BY THE CONTRACTOR BEFORE WORK.
- SEE PLAN NOTES DRAWING NO. 1 FOR PLAN NOTES AND GENERAL NOTES.
- CONTAMINATED SOIL MAY BE ENCOUNTERED AT STA. 282+60, RT. ITEMS HAVE BEEN INCLUDED IN THE CONTRACT FOR REMOVAL. SEE NOTE 24 ON PLAN NOTES DRAWING NO. 1 FOR BORING INFORMATION.

K:\830008 (US Res 7 Shelburne Rd)\AS-BUILT\SEWER\SEWERAS BUILT PL-26_4_03.DWG, Layout1, 9/12/06 9:45:57 AM, pamaia, hv-bf-b01\VT-BRL-HP1055m-East



PORTLAND CEMENT CONCRETE SIDEWALK - 5" (MEDIAN WIDTH 4-6 FT.)

- 381+00 TO 383+12
- 384+26 TO 387+00

DATUM
VERTICAL NGVD 1929
HORIZONTAL NAD 1927

PORTLAND CEMENT CONCRETE SIDEWALK - 8"

- 381+16 - 381+75 RT
- 382+47 - 382+91 RT
- 381+00 - 381+31 LT
- 383+32 - 383+81 LT

CONSTRUCT DRIVE

- 381+38 RT - 383+32 RT - 47' & 25'
- 380+66 LT - 381+46 LT - 35'
- 382+36 LT - 384+99 LT - 35'
- 385+30 LT - 30'
- ALLEN ROAD 340+52 RT - 341+58 RT - 35'
- ALLEN ROAD 341+96 LT - 30'

CONSTRUCT SIDEWALK RAMP	TYPE
383+35, RT	1
384+02, RT	1
384+93, LT	1
385+48, LT	1
384+18, LT	1
384+18, RT	2

CONSTRUCT APPROACH
ALLEN ROAD 383+56.00 RT

AS-BUILT LEGEND

- WATER AS-BUILTS
- SEWER AS-BUILTS
- DRAINAGE AS-BUILTS
- ELECTRICAL AS-BUILTS
- PAVEMENT OTHER
- AS-BUILTS

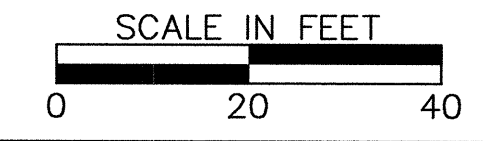
AS-BUILT REVISIONS

NO.	DATE	DESCRIPTION
1.	3/1/06	UTILITIES, PAV. & CURB UPDATES
2.	8/9/06	SEWER AND CURB UPDATES

SHELBURNE - SOUTH BURLINGTON

SURVEYED BY V.S.C. INC. DATE _____
DRAWN BY E.A.A. INC. DATE _____
TRACED BY E.A.A. INC. DATE _____

PROJECT NH-EGC-019-4(28)
PLAN DRAWING NO.3
SHEET NO. 71 OF 283



FOR PROFILE SEE PROFILE DRAWING NO. 3