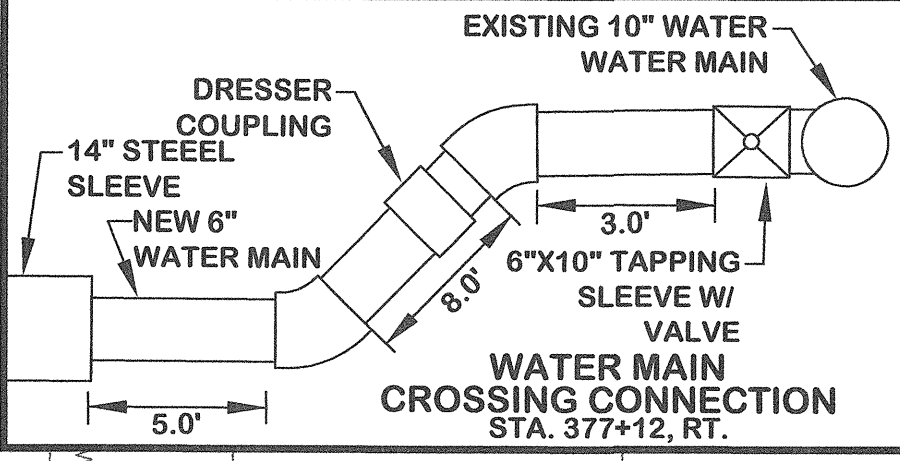
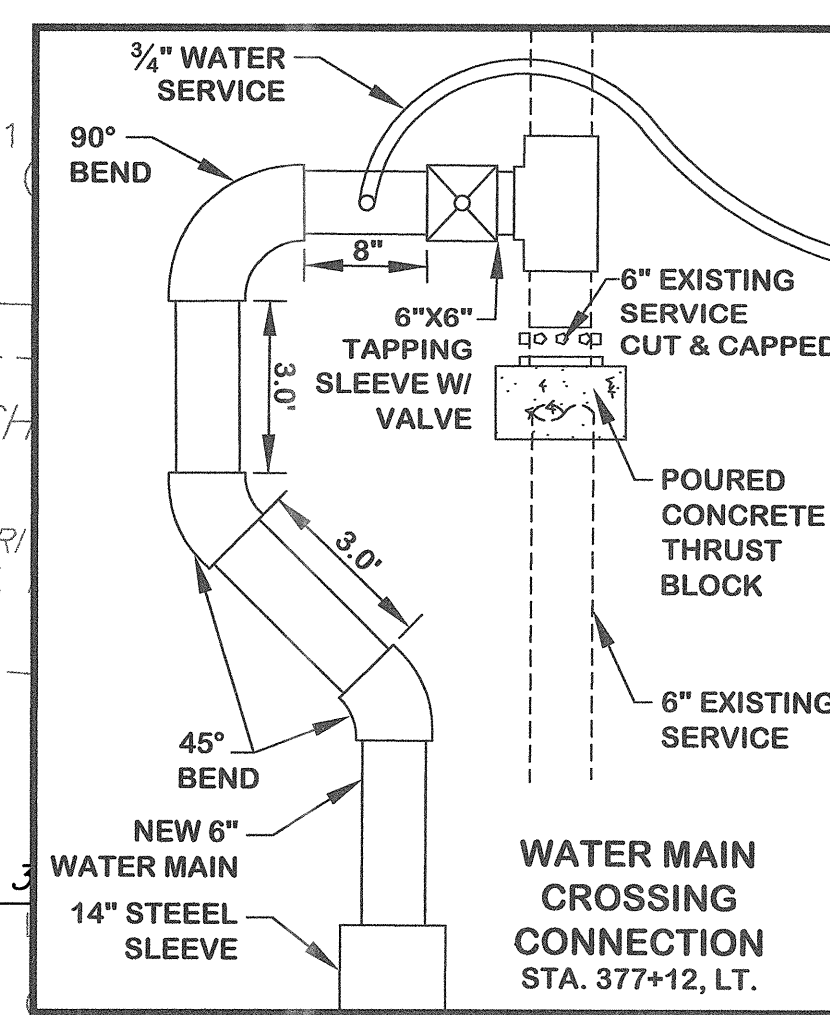
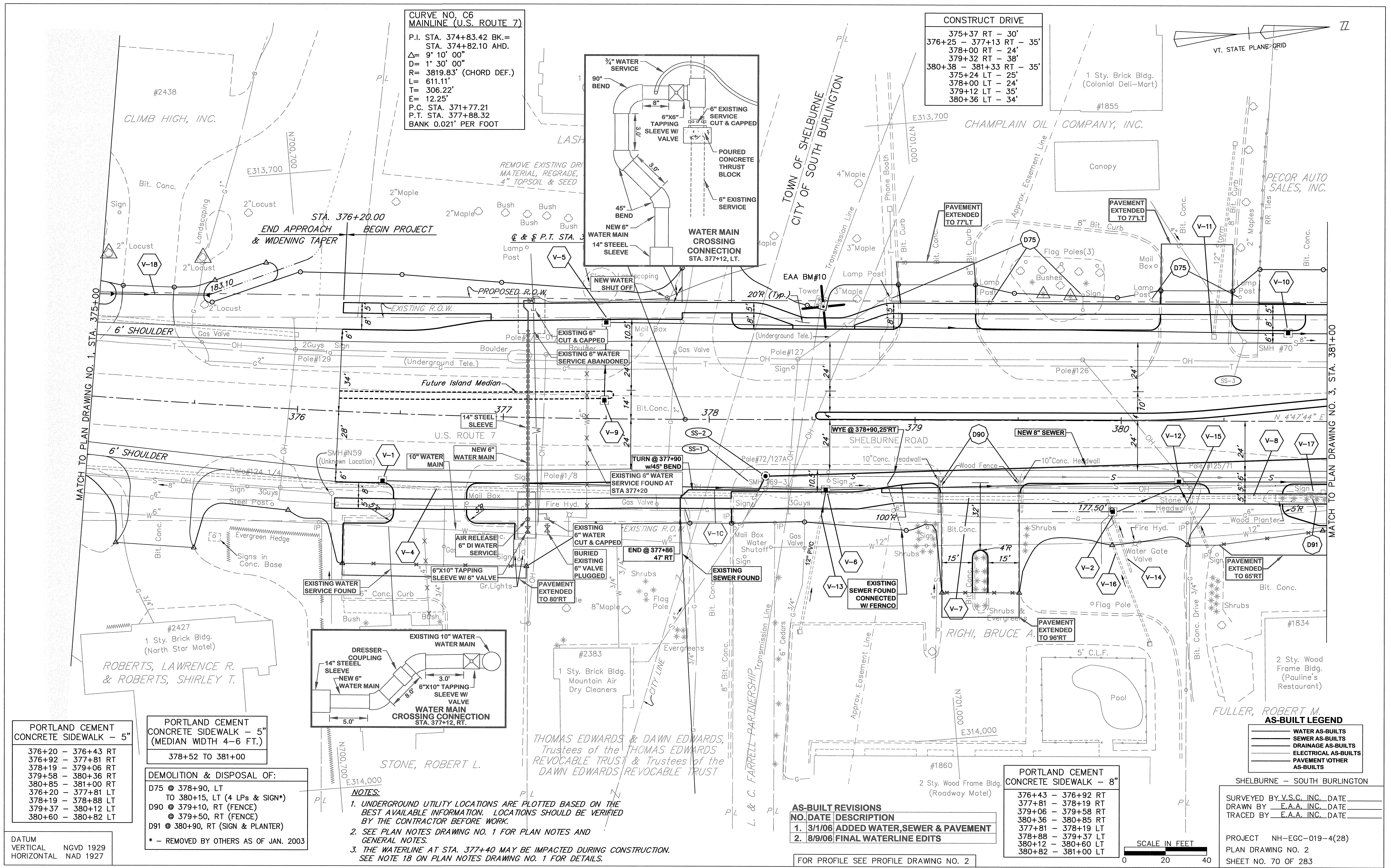
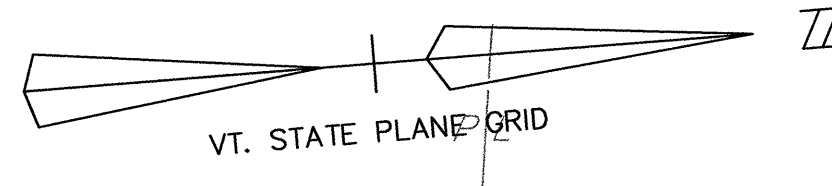


**CURVE NO. C6
MAINLINE (U.S. ROUTE 7)**
 P.I. STA. 374+83.42 BK.=
 STA. 374+82.10 AHD.
 $\Delta = 9^{\circ} 10' 00''$
 $D = 1' 30' 00''$
 $R = 3819.83' (CHORD DEF.)$
 $L = 611.11'$
 $T = 306.22'$
 $E = 12.25'$
 P.C. STA. 371+77.21
 P.T. STA. 377+88.32
 BANK 0.021' PER FOOT

CONSTRUCT DRIVE
 375+37 RT - 30'
 376+25 - 377+13 RT - 35'
 378+00 RT - 24'
 379+32 RT - 38'
 380+38 - 381+33 RT - 35'
 375+24 LT - 25'
 378+00 LT - 24'
 379+12 LT - 35'
 380+36 LT - 34'



**PORTLAND CEMENT
CONCRETE SIDEWALK - 5"**
 376+20 - 376+43 RT
 376+92 - 377+81 RT
 378+19 - 379+06 RT
 379+58 - 380+36 RT
 380+85 - 381+00 RT
 376+20 - 377+81 LT
 378+19 - 378+88 LT
 379+37 - 380+12 LT
 380+60 - 380+82 LT

**PORTLAND CEMENT
CONCRETE SIDEWALK - 5"**
 (MEDIAN WIDTH 4-6 FT.)
 378+52 TO 381+00

DEMOLITION & DISPOSAL OF:
 D75 @ 378+90, LT
 TO 380+15, LT (4 LPS & SIGN*)
 D90 @ 379+10, RT (FENCE)
 @ 379+50, RT (FENCE)
 D91 @ 380+90, RT (SIGN & PLANTER)
 * - REMOVED BY OTHERS AS OF JAN. 2003

NOTES:
 1. UNDERGROUND UTILITY LOCATIONS ARE PLOTTED BASED ON THE BEST AVAILABLE INFORMATION. LOCATIONS SHOULD BE VERIFIED BY THE CONTRACTOR BEFORE WORK.
 2. SEE PLAN NOTES DRAWING NO. 1 FOR PLAN NOTES AND GENERAL NOTES.
 3. THE WATERLINE AT STA. 377+40 MAY BE IMPACTED DURING CONSTRUCTION. SEE NOTE 18 ON PLAN NOTES DRAWING NO. 1 FOR DETAILS.

AS-BUILT REVISIONS

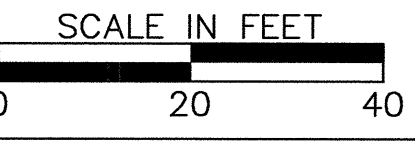
NO.	DATE	DESCRIPTION
1.	3/1/06	ADDED WATER, SEWER & PAVEMENT
2.	8/9/06	FINAL WATERLINE EDITS

**PORTLAND CEMENT
CONCRETE SIDEWALK - 8"**
 376+43 - 376+92 RT
 377+81 - 378+19 RT
 379+06 - 379+58 RT
 380+36 - 380+85 RT
 377+81 - 378+19 LT
 378+88 - 379+37 LT
 380+12 - 380+60 LT
 380+82 - 381+00 LT

AS-BUILT LEGEND
 WATER AS-BUILTS
 SEWER AS-BUILTS
 DRAINAGE AS-BUILTS
 ELECTRICAL AS-BUILTS
 PAVEMENT OTHER AS-BUILTS

SHELBURNE - SOUTH BURLINGTON
 SURVEYED BY V.S.C. INC. DATE _____
 DRAWN BY E.A.A. INC. DATE _____
 TRACED BY E.A.A. INC. DATE _____

PROJECT NH-EGC-019-4(28)
 PLAN DRAWING NO. 2
 SHEET NO. 70 OF 283



FOR PROFILE SEE PROFILE DRAWING NO. 2

K:\GIS\30000 (US Rpt) Shelburne Proj\GIS\BUILT\WATER-SEWER\AS BUILT PL 24_4_02.DWG, Layout1, 9/12/08 9:42:18 AM, parmasa, 10/14/01/VT-FBI-HP/1055cm East