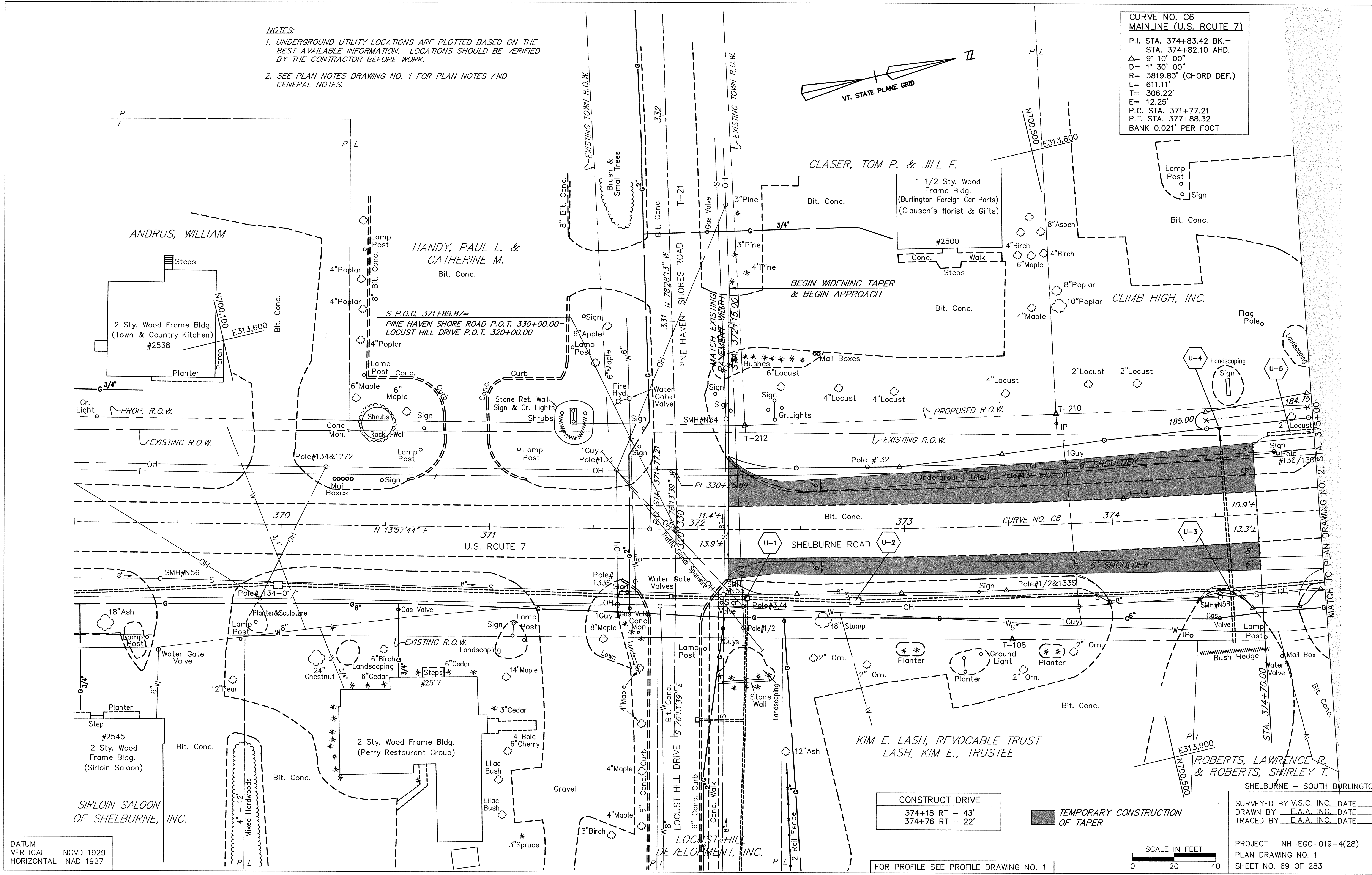
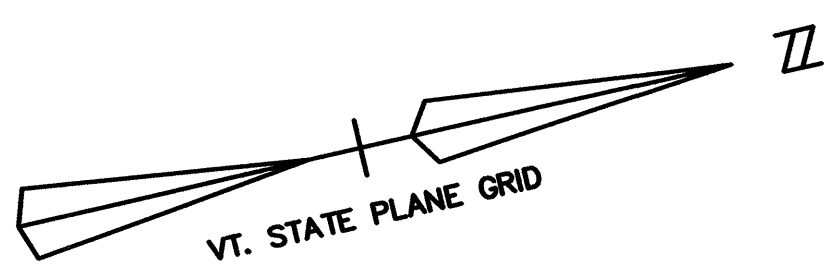


NOTES:
 1. UNDERGROUND UTILITY LOCATIONS ARE PLOTTED BASED ON THE BEST AVAILABLE INFORMATION. LOCATIONS SHOULD BE VERIFIED BY THE CONTRACTOR BEFORE WORK.
 2. SEE PLAN NOTES DRAWING NO. 1 FOR PLAN NOTES AND GENERAL NOTES.

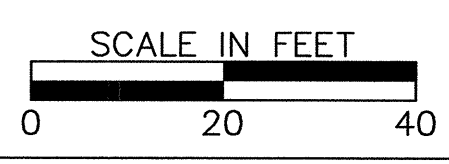
**CURVE NO. C6
 MAINLINE (U.S. ROUTE 7)**
 P.I. STA. 374+83.42 BK.=
 STA. 374+82.10 AHD.
 $\Delta = 9^\circ 10' 00''$
 $D = 1' 30' 00''$
 $R = 3819.83'$ (CHORD DEF.)
 $L = 611.11'$
 $T = 306.22'$
 $E = 12.25'$
 P.C. STA. 371+77.21
 P.T. STA. 377+88.32
 BANK 0.021' PER FOOT



DATUM
 VERTICAL NGVD 1929
 HORIZONTAL NAD 1927

CONSTRUCT DRIVE
 374+18 RT - 43'
 374+76 RT - 22'

TEMPORARY CONSTRUCTION OF TAPER



FOR PROFILE SEE PROFILE DRAWING NO. 1

SURVEYED BY V.S.C. INC. DATE _____
 DRAWN BY E.A.A. INC. DATE _____
 TRACED BY E.A.A. INC. DATE _____

PROJECT NH-EGC-019-4(28)
 PLAN DRAWING NO. 1
 SHEET NO. 69 OF 283

K:\9330008 [US Riv 7 Shelburne Rd] AS-BUILT WATER SEWERAS BUILT PL-23_4_01.DWG. Layout: 9/1/2006 1:47:22 PM. parmas. v:\cadd\01\VT-BRL-HP\055m East