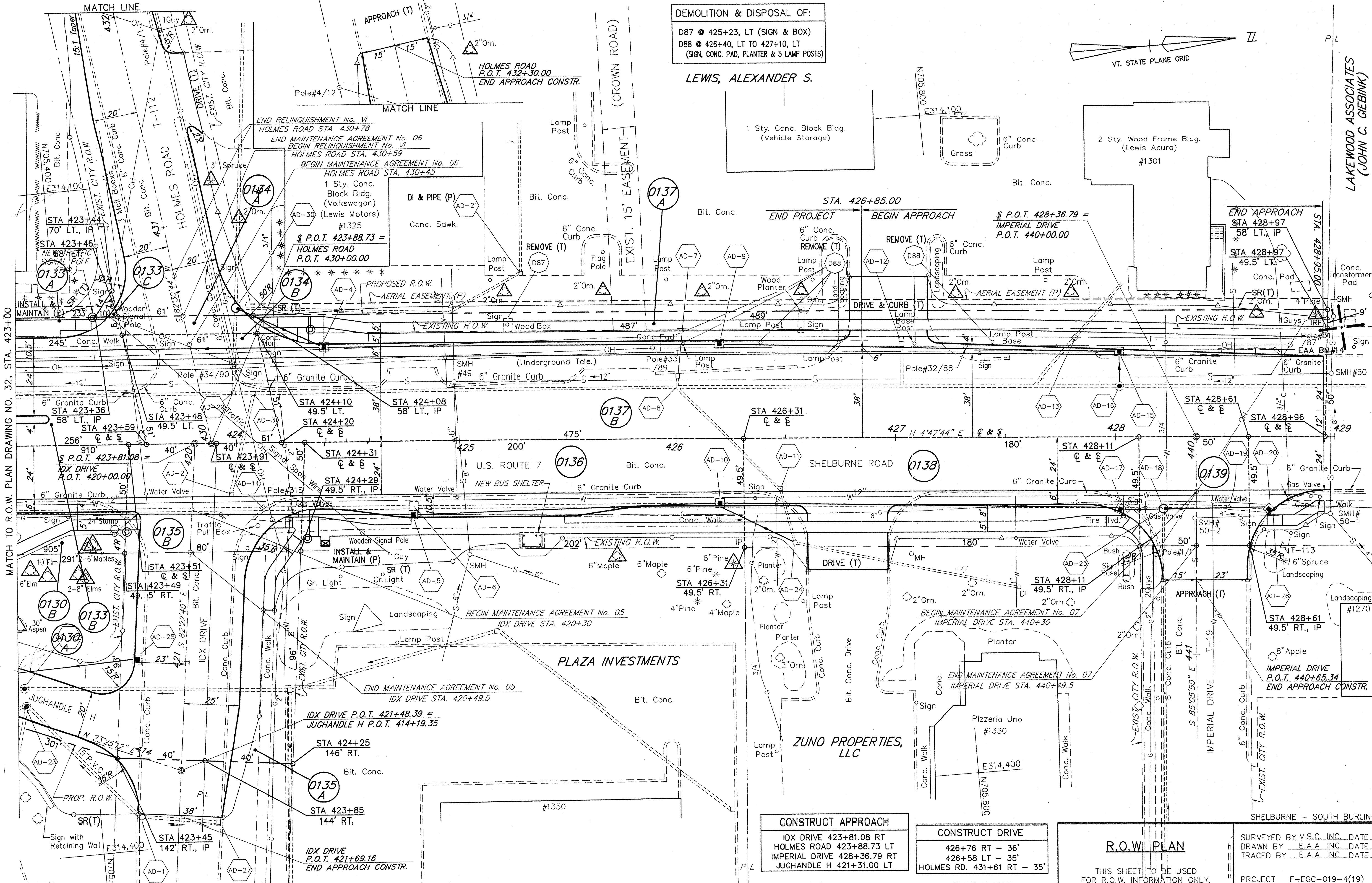
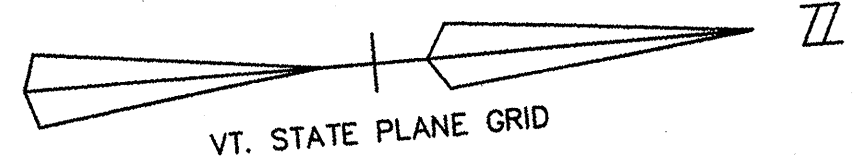


LAKWOOD ASSOCIATES
(JOHN C. GLEBINK)

DEMOLITION & DISPOSAL OF:
 D87 @ 425+23, LT (SIGN & BOX)
 D88 @ 426+40, LT TO 427+10, LT
 (SIGN, CONC. PAD, PLANTER & 5 LAMP POSTS)



LEWIS, ALEXANDER S.
 1 Sty. Conc. Block Bldg.
 (Vehicle Storage)

2 Sty. Wood Frame Bldg.
 (Lewis Acura)
 #1301

Grass
 6" Conc. Curb

STA. 426+85.00
 END PROJECT

BEGIN APPROACH
 P.O.T. 428+36.79 =
 IMPERIAL DRIVE
 P.O.T. 440+00.00

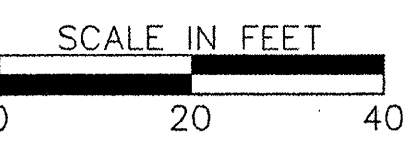
END APPROACH
 STA 428+97
 58' LT., IP

DATUM
 VERTICAL NGVD 1929
 HORIZONTAL NAD 1927

CONSTRUCT APPROACH
 IDX DRIVE 423+81.08 RT
 HOLMES ROAD 423+88.73 LT
 IMPERIAL DRIVE 428+36.79 RT
 JUGHANDLE H 421+31.00 LT

CONSTRUCT DRIVE
 426+76 RT - 36'
 426+58 LT - 35'
 HOLMES RD. 431+61 RT - 35'

R.O.W. PLAN



THIS SHEET TO BE USED
 FOR R.O.W. INFORMATION ONLY.

SURVEYED BY V.S.C. INC. DATE _____
 DRAWN BY E.A.A. INC. DATE _____
 TRACED BY E.A.A. INC. DATE _____
 PROJECT F-EGC-019-4(19)
 R.O.W. DRAWING NO. 33
 SHEET NO. 30 OF 203