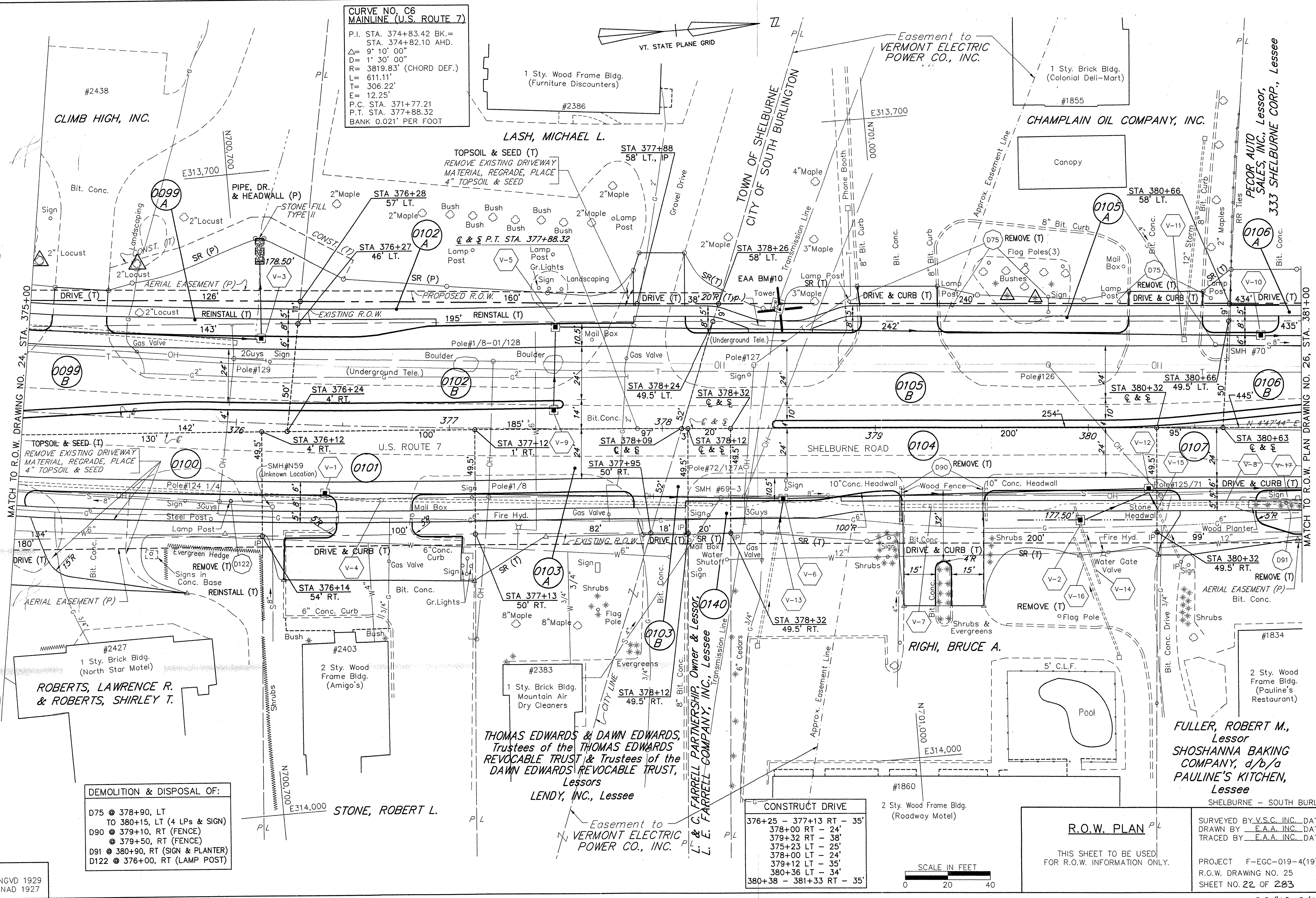
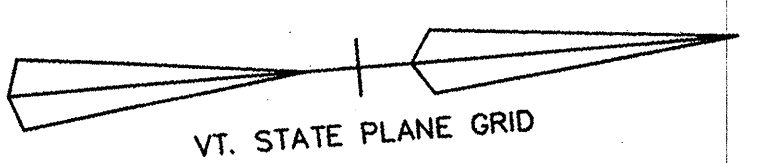


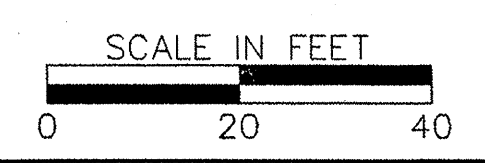
**CURVE NO. C6
MAINLINE (U.S. ROUTE 7)**
 P.I. STA. 374+83.42 BK.=
 STA. 374+82.10 AHD.
 $\Delta = 9^\circ 10' 00''$
 $D = 1' 30' 00''$
 $R = 3819.83'$ (CHORD DEF.)
 $L = 611.11'$
 $T = 306.22'$
 $E = 12.25'$
 P.C. STA. 371+77.21
 P.T. STA. 377+88.32
 BANK 0.021' PER FOOT



DEMOLITION & DISPOSAL OF:
 D75 @ 378+90, LT
 TO 380+15, LT (4 LPS & SIGN)
 D90 @ 379+10, RT (FENCE)
 @ 379+50, RT (FENCE)
 D91 @ 380+90, RT (SIGN & PLANTER)
 D122 @ 376+00, RT (LAMP POST)

CONSTRUCT DRIVE
 376+25 - 377+13 RT - 35'
 378+00 RT - 24'
 379+32 RT - 38'
 375+23 LT - 25'
 378+00 LT - 24'
 379+12 LT - 35'
 380+36 LT - 34'
 380+38 - 381+33 RT - 35'

R.O.W. PLAN
 THIS SHEET TO BE USED
 FOR R.O.W. INFORMATION ONLY.
 SURVEYED BY V.S.C. INC. DATE _____
 DRAWN BY E.A.A. INC. DATE _____
 TRACED BY E.A.A. INC. DATE _____
 PROJECT F-EGC-019-4(19)
 R.O.W. DRAWING NO. 25
 SHEET NO. 22 OF 283



DATUM
 VERTICAL NGVD 1929
 HORIZONTAL NAD 1927