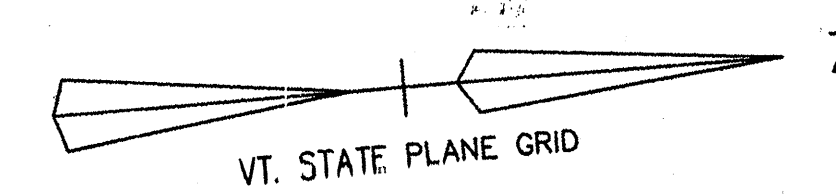
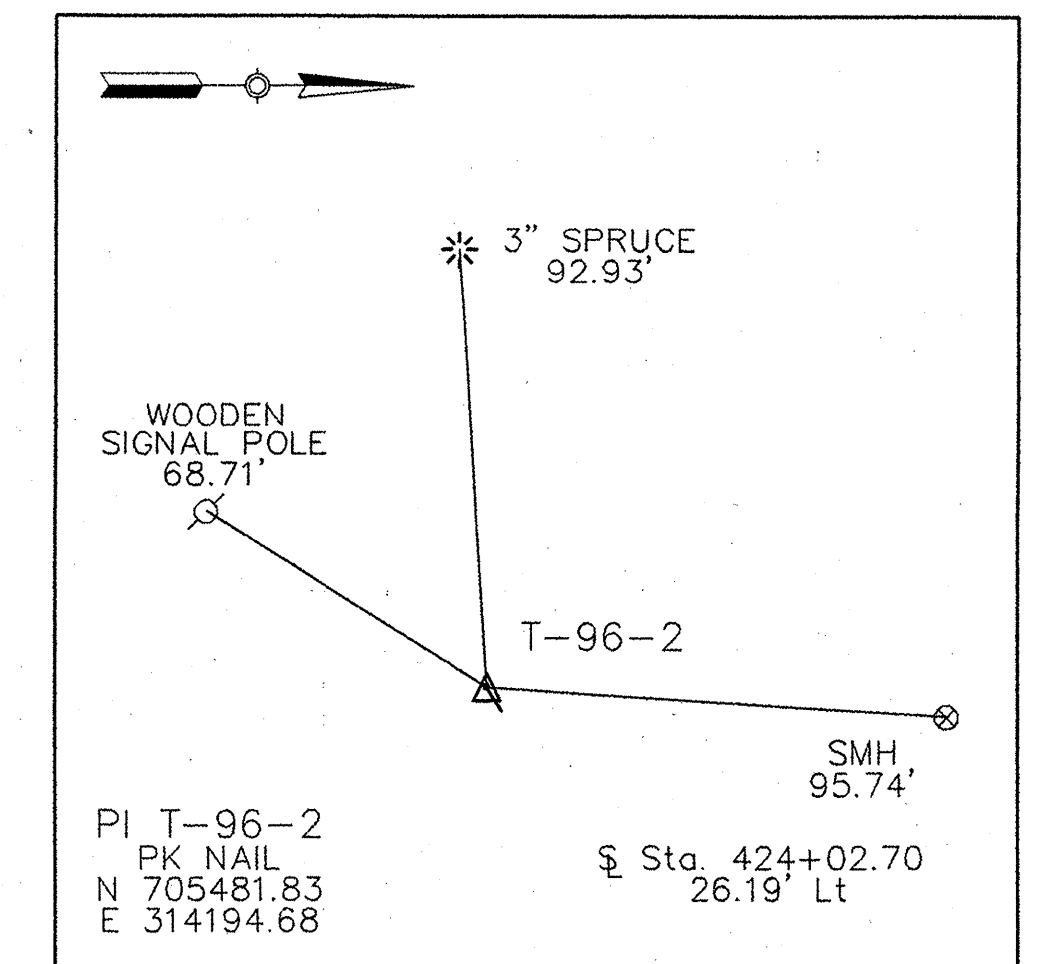
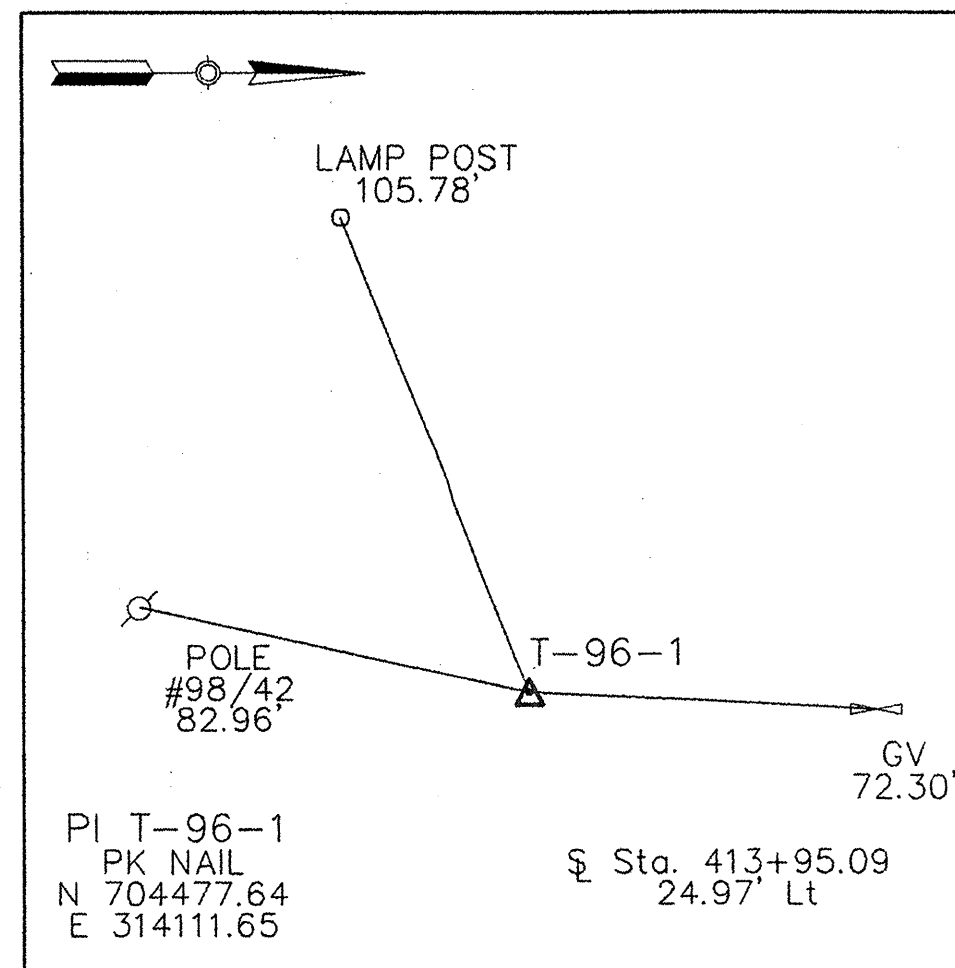
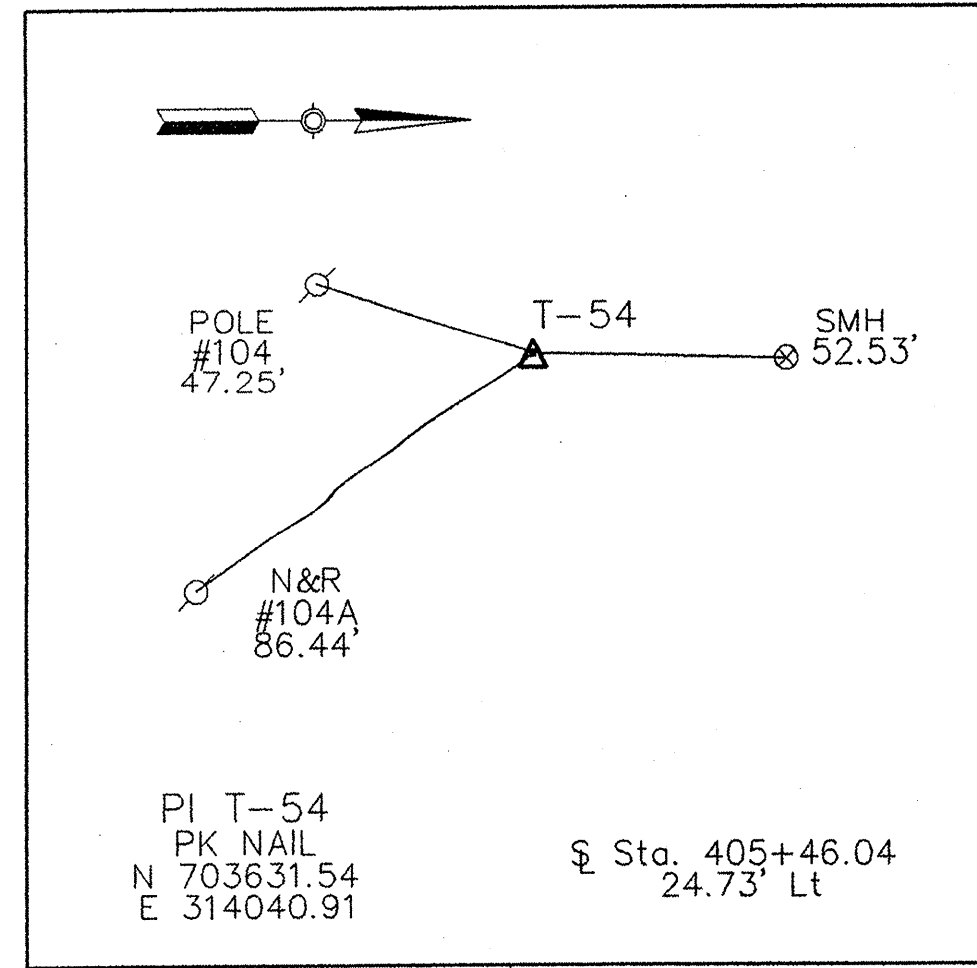


TABLE OF BENCHMARKS

BM #	STATION	OFFSET	ELEVATION	DESCRIPTION
EAA BM 12	404+96	46' LT.	151.660	IS A CHISELED SQUARE IN THE S.W. CORNER OF A CONCRETE TRANSFORMER PAD LOCATED ON THE WEST SIDE OF U.S. RTE 7 NEAR A CHEVY CAR DEALER, APPROX. 100 FEET SOUTH OF THE INTERSECTION OF U.S. ROUTE 7 AND BARTLETT BAY ROAD.
EAA BM 13	417+21	35' LT.	158.352	IS A RAILROAD SPIKE SET IN POLE #45, LOCATED ON THE WEST SIDE OF U.S. RTE 7, APPROX. 675 FEET SOUTH OF THE INTERSECTION OF U.S. ROUTE 7 AND HOLMES ROAD.
EAA BM 14	429+12	57' LT.	186.657	IS A CHISELED SQUARE IN THE S.E. CORNER OF A CONCRETE TRANSFORMER PAD LOCATED ON THE WEST SIDE OF U.S. ROUTE 7, APPROX. 75 FEET NORTH OF THE INTERSECTION OF U.S. ROUTE 7 AND IMPERIAL DRIVE.



MATCH TO ALIGNMENT DRAWING NO. 1
STA. 397+00

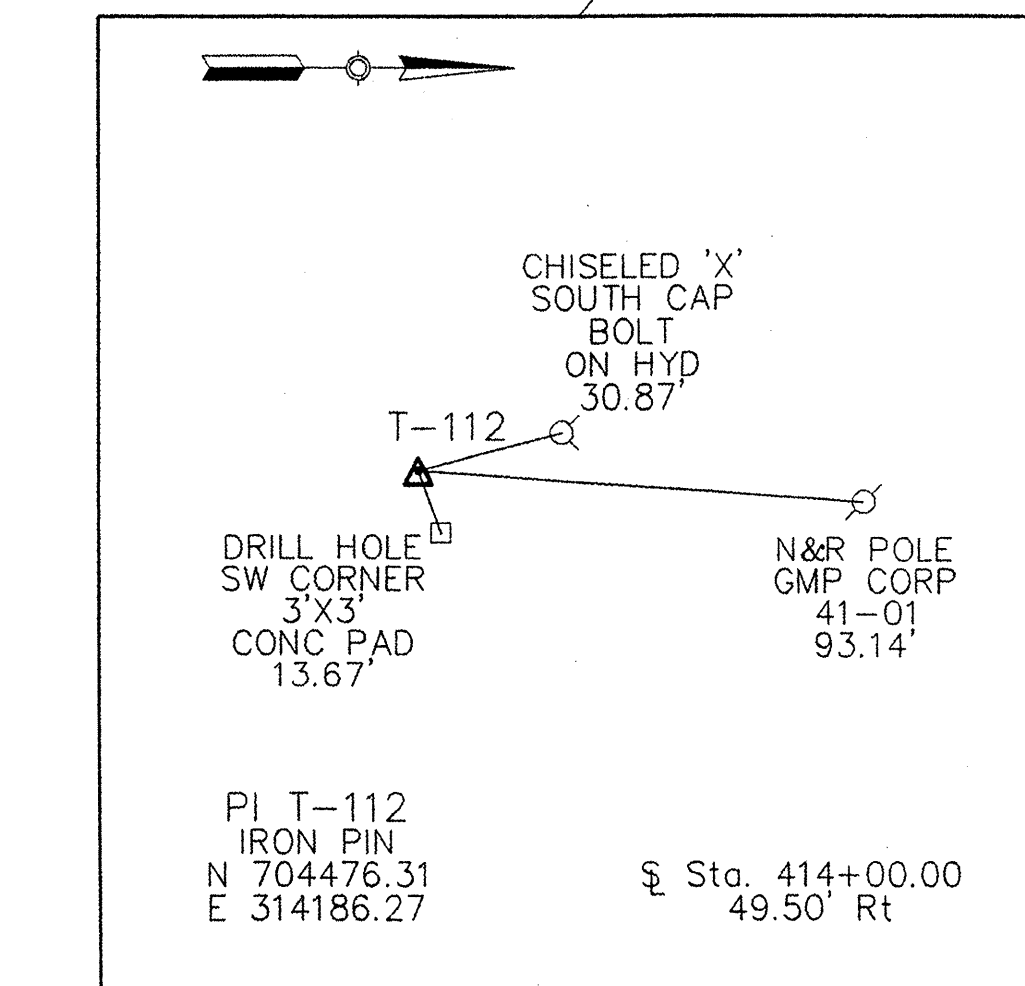
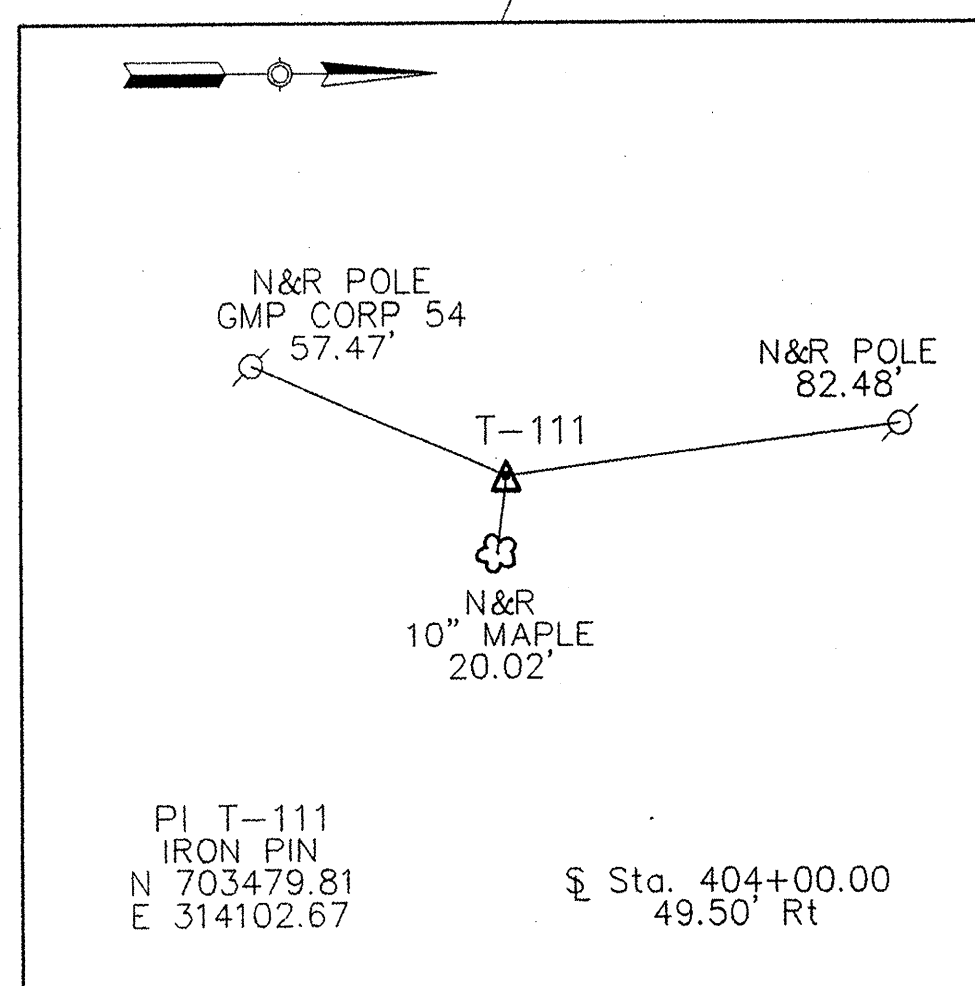
**CURVE NO. C23
BARTLETT BAY ROAD**

P.I. STA. 401+06.12 BK.=
STA. 401+05.90 AHD.
N 703,688.38
E 313,964.00

Δ= 12° 31' 48"
D= 22' 02' 13"
R= 260.00'
T= 28.54'
L= 56.86'
E= 1.56'

P.C. STA. 400+77.58
N 703,686.00
E 313,992.44

P.T. STA. 401+34.44
N 703,684.54
E 313,935.72



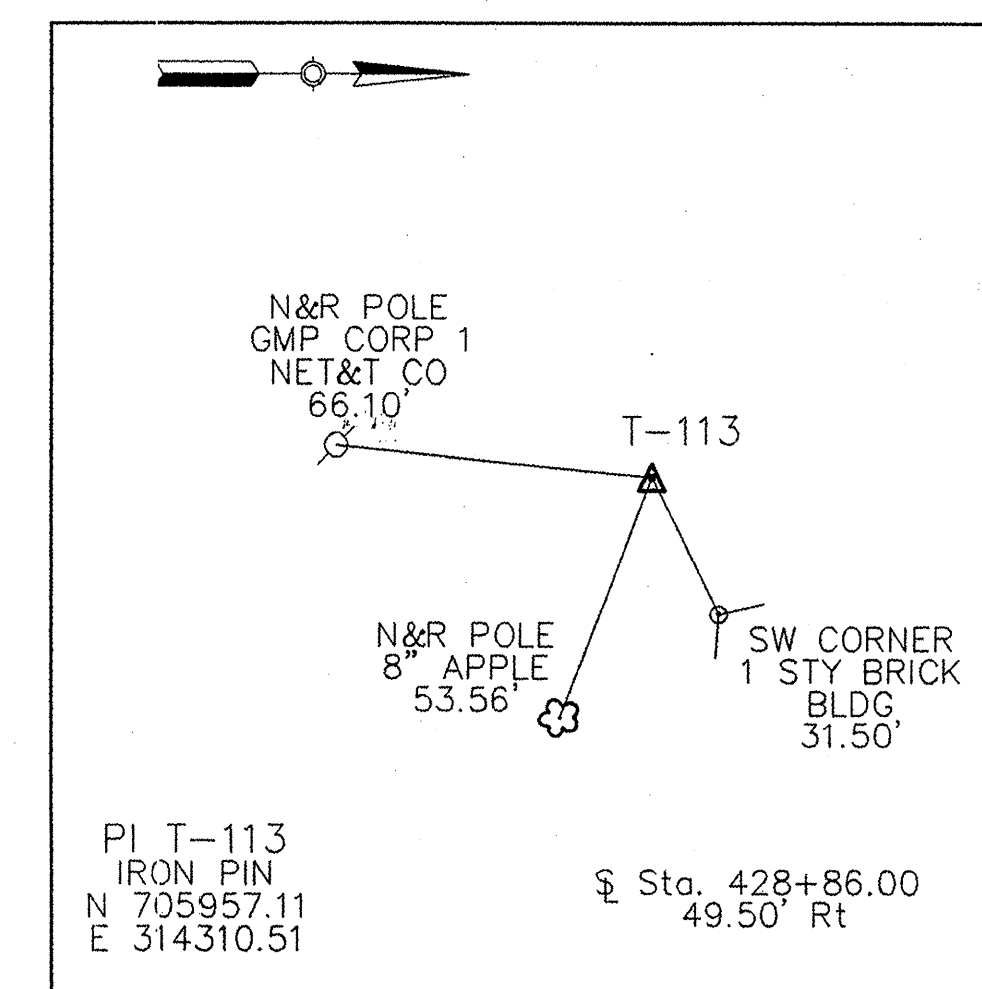
JUGHANDLE H

P.I. STA. 410+50.06 BK.=
STA. 410+49.18 AHD.
N 705,098.73
E 314,218.92

Δ= 18° 38' 33"
D= 18' 47' 08"
R= 305.00'
T= 50.06'
L= 99.24'
E= 4.08'

P.C. STA. 410+00.00
N 705,048.85
E 314,214.75

P.T. STA. 410+99.24
N 705,144.67
E 314,238.82

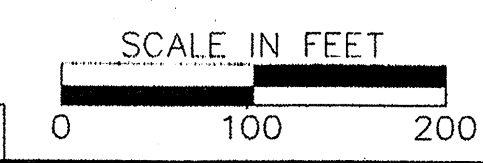


NOTE:
HORIZONTAL DATUM IS NAD 1927
FROM VERMONT AGENCY OF TRANSPORTATION, VT.
TRANSVERSE MERCATOR PROJECTION. (1946)
GRID SCALE FACTOR = 1.000000
SEA LEVEL FACTOR USED (187.0') = 0.99999911

SHELBURNE - SOUTH BURLINGTON

SURVEYED BY V.S.C. INC. DATE _____
DRAWN BY E.A.A. INC. DATE _____
TRACED BY E.A.A. INC. DATE _____

PROJECT NH-EGC-019-4(28)
ALIGNMENT DRAWING NO. 2
SHEET NO. 13 OF 283



4/4/03

DATUM
VERTICAL NGVD 1929
HORIZONTAL NAD 1927