

STATE OF VERMONT AGENCY OF TRANSPORTATION



INDEX OF SHEETS
SEE SHEET 2

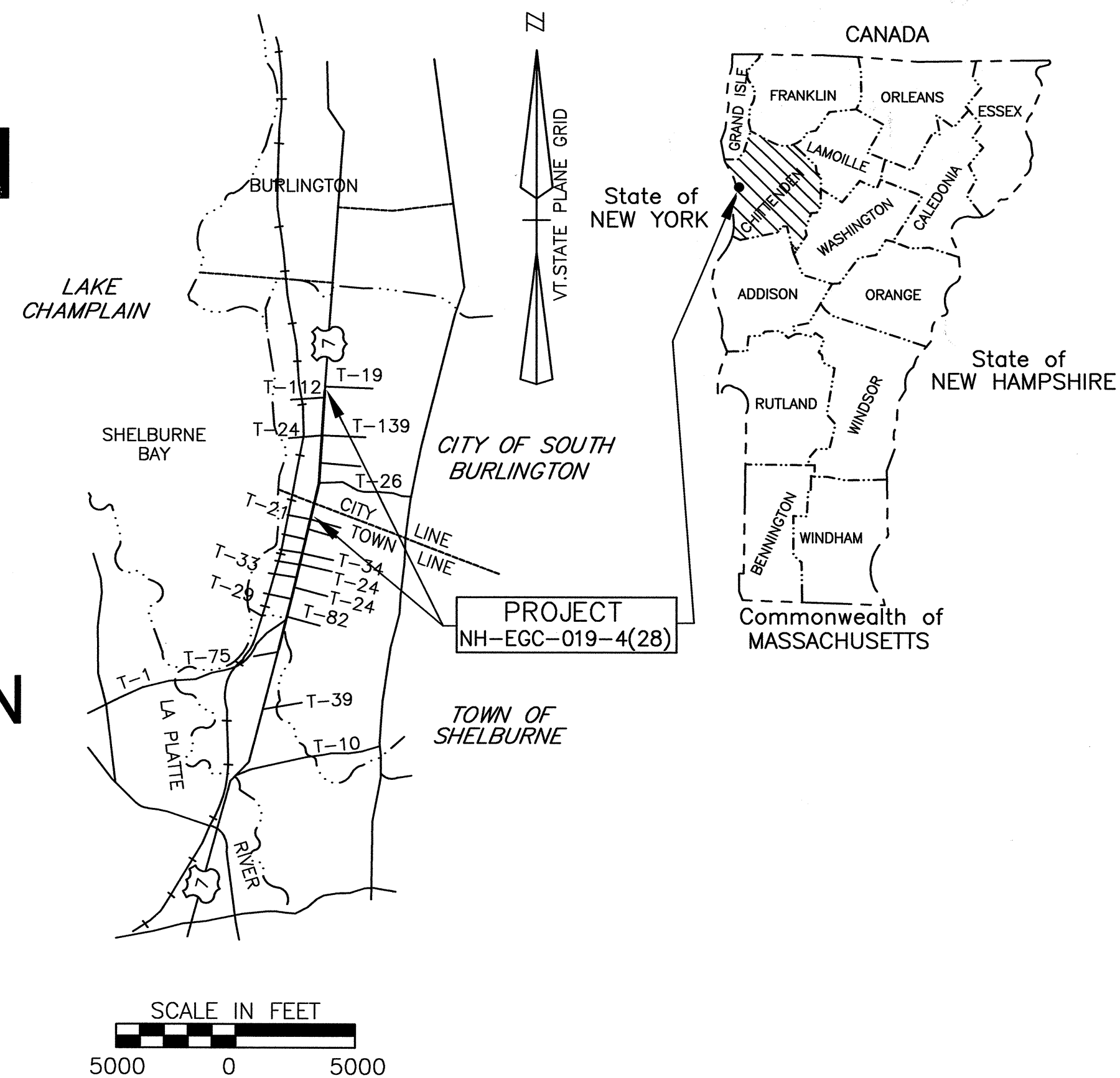
BITUMINOUS CONCRETE PAVEMENT SUPERPAVE MIXTURE DESIGN CRITERIA	
DESIGN LANE/DESIGN LIFE ESALS (20 YEARS)	17,077,000
DESIGN NUMBER OF GYRATIONS	100
PERFORMANCE GRADED ASPHALT BINDER	PG 70-28

PROPOSED URBAN IMPROVEMENT TOWN OF SHELBURNE / CITY OF SOUTH BURLINGTON COUNTY OF CHITTENDEN U.S. ROUTE 7 : SHELBURNE ROAD (F.A.P.)

BEGINNING AT A POINT IN THE TOWN OF SHELBURNE, APPROXIMATELY 4.82 MILES NORTH OF THE SHELBURNE-CHARLOTTE TOWN LINE ON U.S. ROUTE 7 (STA. 376+20) AND EXTENDING NORTHERLY 0.96 MILES.

LENGTH OF ROADWAY AND PROJECT - 5,065 FEET = 0.96 MILES

PROJECT CONSISTS OF RECONSTRUCTION AND WIDENING OF EXISTING HIGHWAY, INCLUDING REHABILITATION OF TRAFFIC CONTROL DEVICES AND SIDEWALKS.



TRAFFIC DATA
Functional Classification - Urban Arterial

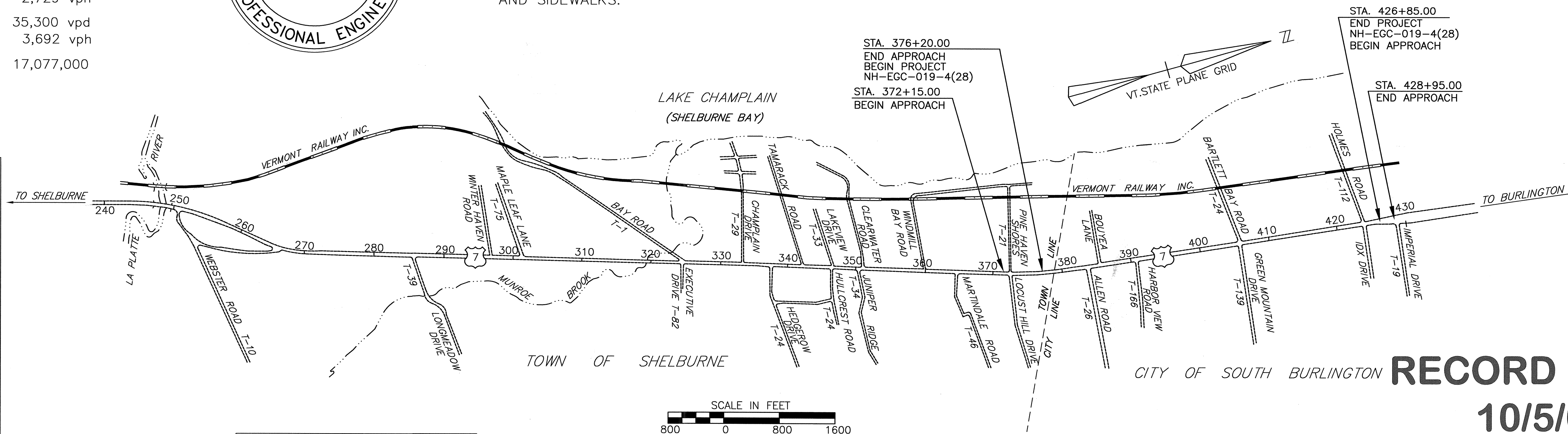
T = 6%
D = 50%
V = 40 M.P.H.

Data for northern Route 7
(Count Station D431 - located between Allen Rd. & Green Mt. Drive)

1998 ADT	26,110 vpd
1998 DHV	2,729 vph
2018 ADT	35,300 vpd
2018 DHV	3,692 vph
2018 ESAL	17,077,000



CONVENTIONAL SIGNS	
COUNTY LINE	---
TOWN LINE	---
LIMITS OF ACCESS	○-○-○
POINT OF ACCESS	X
FENCE LINE	x-x-x
STONE WALL	○-○-○
TRAVELED WAY	---
RAILROAD	---
SURVEY LINE	+
CULVERT	---
POWER POLE	⊠
TELEPHONE POLE	⊙
TREES	⊙
CONTROL OF ACCESS	///
PROPERTY LINE	---
R.O.W. TAKING LINE	SR
SLOPE RIGHTS	○-○-○
TOP OF CUT	△
TOE OF SLOPE	○
DITCH LINE	x-x-x
DRAINAGE LAYOUT CODE	A-1
DEMOLITION CODE	D1
SANITARY SEWER CODE	SS-1
TREE TO BE SAVED	⊙



DATUM	
VERTICAL	NGVD 1929
HORIZONTAL	NAD 1927

ERDMAN ANTHONY

2165 Brighton Henrietta Town Line Rd.
Rochester, NY 14623-2755
Telephone 585 427 8888
Facsimile 585 427 8914
www.erdmananthony.com

RECORD PLANS 10/5/06

THESE PLANS ARE SUBJECT TO SUCH ENGINEERING CHANGES AS MAY BE REQUIRED BY THE FEDERAL HIGHWAY ADMINISTRATION OR THE DIRECTOR OF PROJECT DEVELOPMENT.

CONSTRUCTION IS TO BE CARRIED ON IN ACCORDANCE WITH THESE PLANS AND THE STANDARD SPECIFICATIONS FOR CONSTRUCTION DATED 2001, AS APPROVED BY THE FEDERAL HIGHWAY ADMINISTRATION ON JANUARY 4, 2001 FOR USE ON THIS PROJECT, INCLUDING ALL SUBSEQUENT REVISIONS AND SUCH REVISED SPECIFICATIONS AND SPECIAL PROVISIONS AS ARE INCORPORATED IN THESE PLANS.

APRIL 4, 2003	
SUBMITTED BY ORDER OF THE STATE TRANSPORTATION BOARD	
APPROVED _____	DATE _____
SPECIAL PROJECTS ENGINEER	
CONTRACT PLANS	
PROJECT NH-EGC-019-4(28)	
SHEET 1 OF 283 SHEETS	



K:\5303048 US Rte 7 Shelburne Rd\US-BUILD\TSSAS\Build-over-DWG, Model, 05/20/06 1:09:54 PM, pmmma, VT-BRL-HP-1050m-Esart\Figures-Final1.pcd