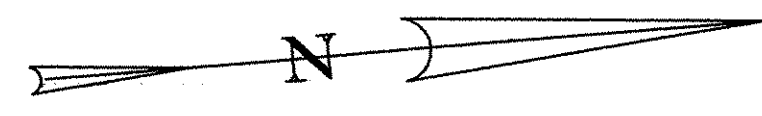


② STA. 383+49 RT RTE. 7 = 340+42 RT ALLEN RD. : EXIST. 4" NOBLOW FLANGE TEE. 4' EAST OF TEE—4" LUB. PLUG VALVE. 6' EAST OF TEE—4" INS. COUP. W/D-1 T.S.. 1/4/74.



SEE BOUYEA LN. SH. 1

TO #68 BOUYEA LN / AKA #1805 SHELBN. RD. BOUYEA FASSETTS BAKERY

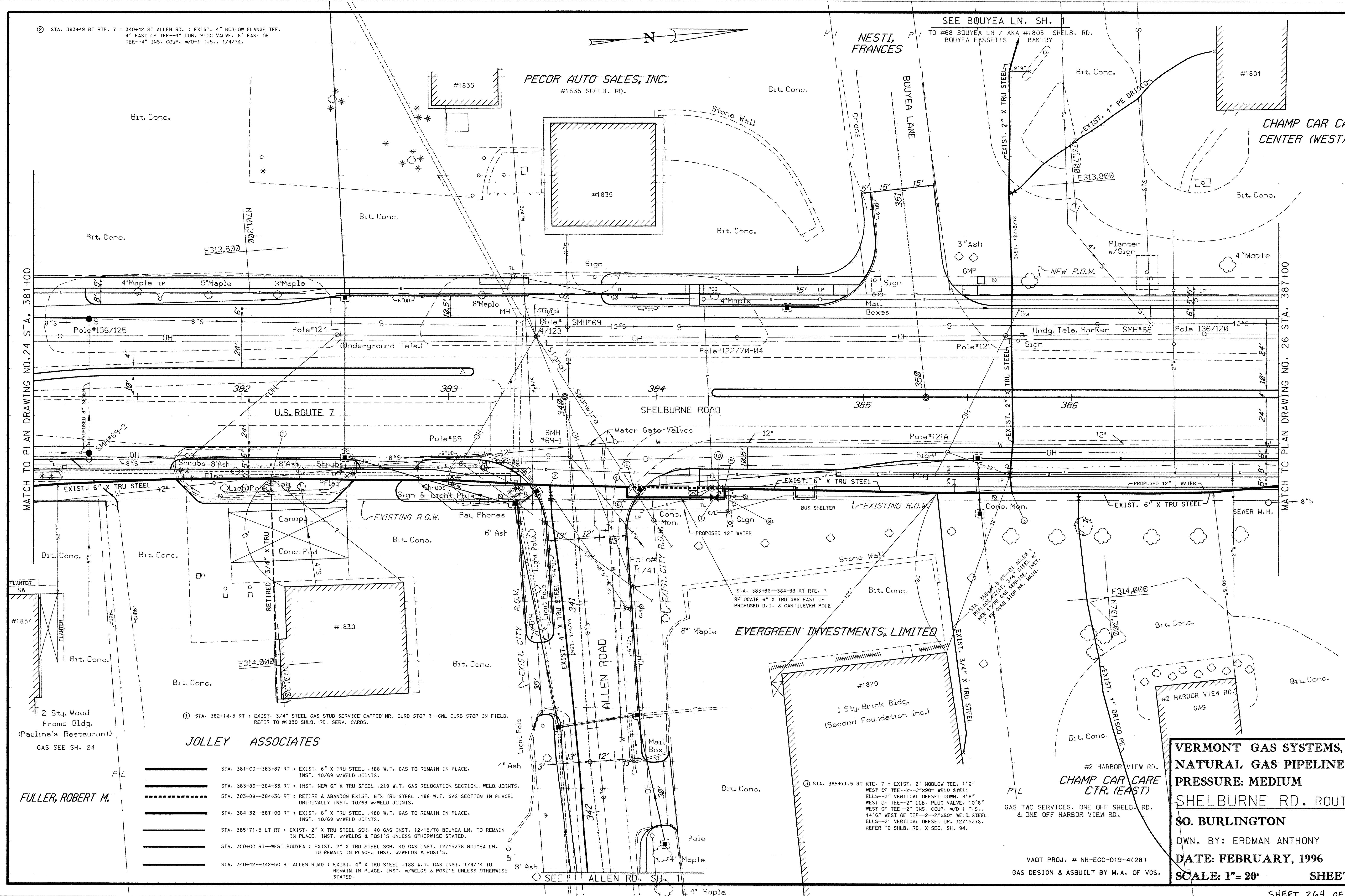
NESTI, FRANCES

PECOR AUTO SALES, INC.
#1835 SHELBN. RD.

CHAMP CAR CARE CENTER (WEST), INC.

MATCH TO PLAN DRAWING NO. 24 STA. 381+00

MATCH TO PLAN DRAWING NO. 26 STA. 387+00



① STA. 382+14.5 RT : EXIST. 3/4" STEEL GAS STUB SERVICE CAPPED NR. CURB STOP ?—CNL CURB STOP IN FIELD. REFER TO #1830 SHELBN. RD. SERV. CARDS.

STA. 383+86—384+33 RT RTE. 7 RELOCATE 6" X TRU GAS EAST OF PROPOSED D.1. & CANTILEVER POLE

STA. 385+24.5 RT RTE. 7 RELOCATE 6" X TRU GAS SERVICE INST. NEW 1" PE GAS SERVICE INST. 1" PE CURB STOP NR. MAIL.

JOLLEY ASSOCIATES

- STA. 381+00—383+87 RT : EXIST. 6" X TRU STEEL .188 W.T. GAS TO REMAIN IN PLACE. INST. 10/69 W/WELD JOINTS.
- STA. 383+86—384+33 RT : INST. NEW 6" X TRU STEEL .219 W.T. GAS RELOCATION SECTION. WELD JOINTS.
- STA. 383+89—384+30 RT : RETIRE & ABANDON EXIST. 6" X TRU STEEL .188 W.T. GAS SECTION IN PLACE. ORIGINALLY INST. 10/69 W/WELD JOINTS.
- STA. 384+32—387+00 RT : EXIST. 6" X TRU STEEL .188 W.T. GAS TO REMAIN IN PLACE. INST. 10/69 W/WELD JOINTS.
- STA. 385+71.5 LT-RT : EXIST. 2" X TRU STEEL SCH. 40 GAS INST. 12/15/78 BOUYEA LN. TO REMAIN IN PLACE. INST. W/WELDS & POSI'S UNLESS OTHERWISE STATED.
- STA. 350+00 RT—WEST BOUYEA : EXIST. 2" X TRU STEEL SCH. 40 GAS INST. 12/15/78 BOUYEA LN. TO REMAIN IN PLACE. INST. W/WELDS & POSI'S.
- STA. 340+42—342+50 RT ALLEN ROAD : EXIST. 4" X TRU STEEL .188 W.T. GAS INST. 1/4/74 TO REMAIN IN PLACE. INST. W/WELDS & POSI'S UNLESS OTHERWISE STATED.

2 Sty. Wood Frame Bldg. (Pauline's Restaurant) GAS SEE SH. 24

FULLER, ROBERT M.

EVERGREEN INVESTMENTS, LIMITED

1 Sty. Brick Bldg. (Second Foundation Inc.)

CHAMP CAR CARE CTR. (EAST)

VERMONT GAS SYSTEMS, INC.
NATURAL GAS PIPELINE
PRESSURE: MEDIUM
SHELBURNE RD. ROUTE 7
SO. BURLINGTON
 DWN. BY: ERDMAN ANTHONY
DATE: FEBRUARY, 1996
SCALE: 1"= 20' **SHEET: 25**

VAOT PROJ. # NH-EGC-019-4(28)
GAS DESIGN & ASBUILT BY M.A. OF VGS.