

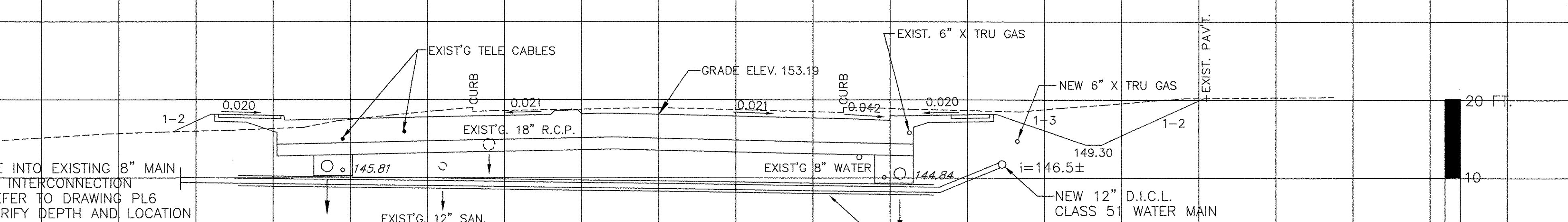
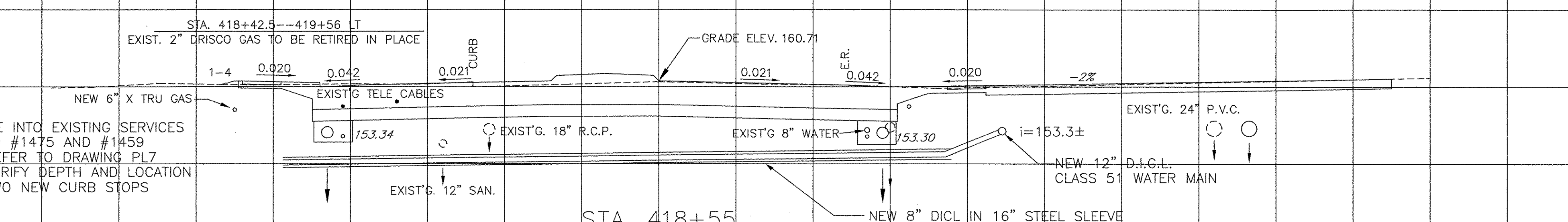
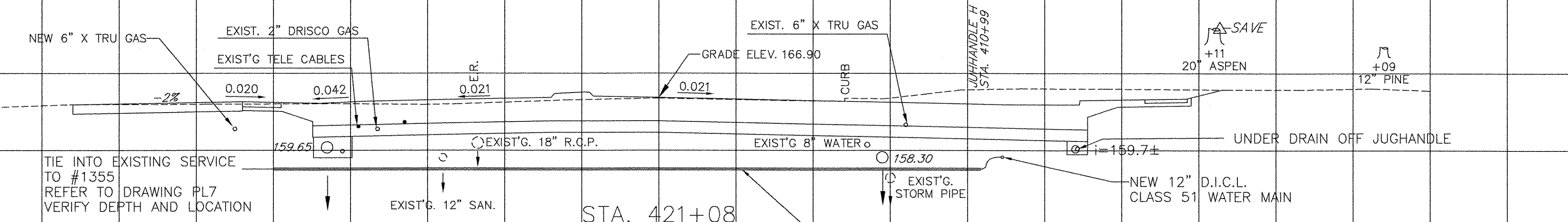
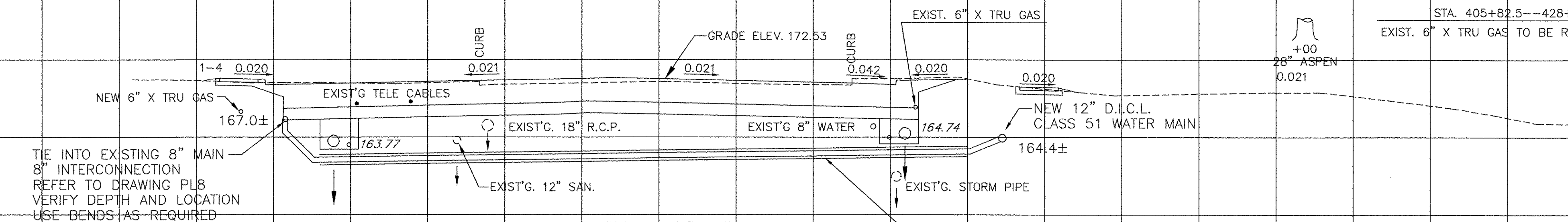
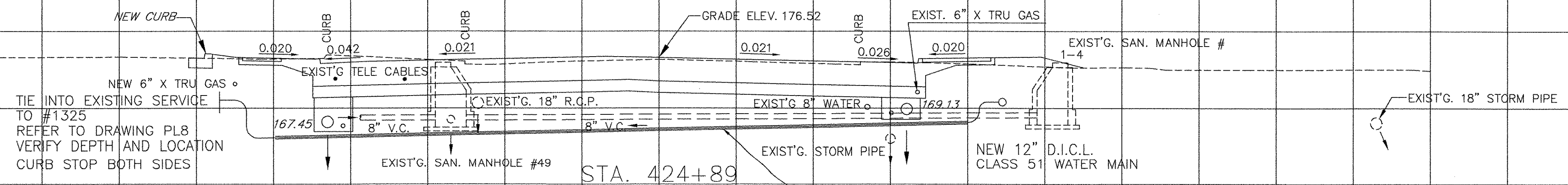
DATUM ELEV = 170.00

DATUM ELEV = 165.00

DATUM ELEV = 160.00

DATUM ELEV = 150.00

DATUM ELEV = 145.00



STA. 416+00--428+90 55'LT
INST. NEW 6" X TRU GAS HOLMES RD.

STA. 418+42.5--419+56 LT
EXIST. 2" DRISCO GAS TO BE RETIRED IN PLACE

STA. 416+00--428+90 55'LT
INST. NEW 6" X TRU GAS

TIE INTO EXISTING 8" MAIN
8" INTERCONNECTION
REFER TO DRAWING PL6
VERIFY DEPTH AND LOCATION
USE BENDS AS REQUIRED

TIE INTO EXISTING SERVICE
TO #1325
REFER TO DRAWING PL8
VERIFY DEPTH AND LOCATION
CURB STOP BOTH SIDES

TIE INTO EXISTING 8" MAIN
8" INTERCONNECTION
REFER TO DRAWING PL8
VERIFY DEPTH AND LOCATION
USE BENDS AS REQUIRED

TIE INTO EXISTING SERVICE
TO #1355
REFER TO DRAWING PL7
VERIFY DEPTH AND LOCATION

TIE INTO EXISTING SERVICES
TO #1475 AND #1459
REFER TO DRAWING PL7
VERIFY DEPTH AND LOCATION
TWO NEW CURB STOPS

STA. 424+89

STA. 423+31

STA. 421+08

STA. 418+55

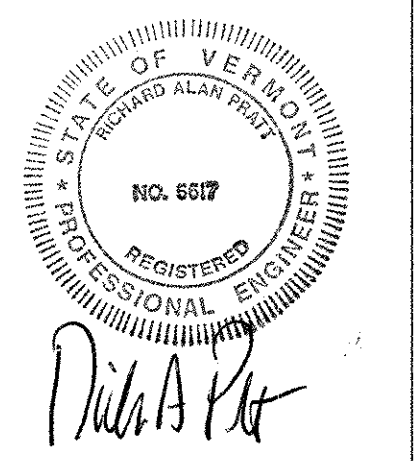
STA. 411+53

STA. 405+82.5--428+86 RT
EXIST. 6" X TRU GAS TO BE RETIRED IN PLACE

+00
28" ASPEN
0.021

+11
20" ASPEN

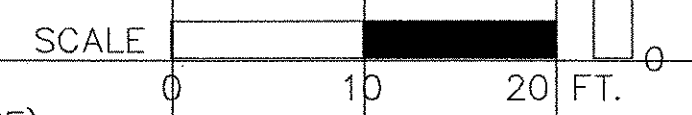
+09
12" PINE



CONTRACT #63
WATER MAIN RELOCATION
U.S. ROUTE 7, "SHELburne RD"
SOUTH BURLINGTON,
VERMONT

ROAD CROSSINGS
4, 5, 6, 7, & 8 OF 8

DESIGNED BY: RAP	DATE: APRIL, 2002
DRAWN BY: EJP	SCALE: AS SHOWN
CHECKED BY: RAP	DRAWING No.
APPROVED BY: RAP	CR2
FILE NAME: 2000_CROSS2	SHEET 16 OF 18



130 120 110 100 90 80 70 60 50 40 30 20 10 0 10 20 30 40 50 60 70 80 90 100 110 120