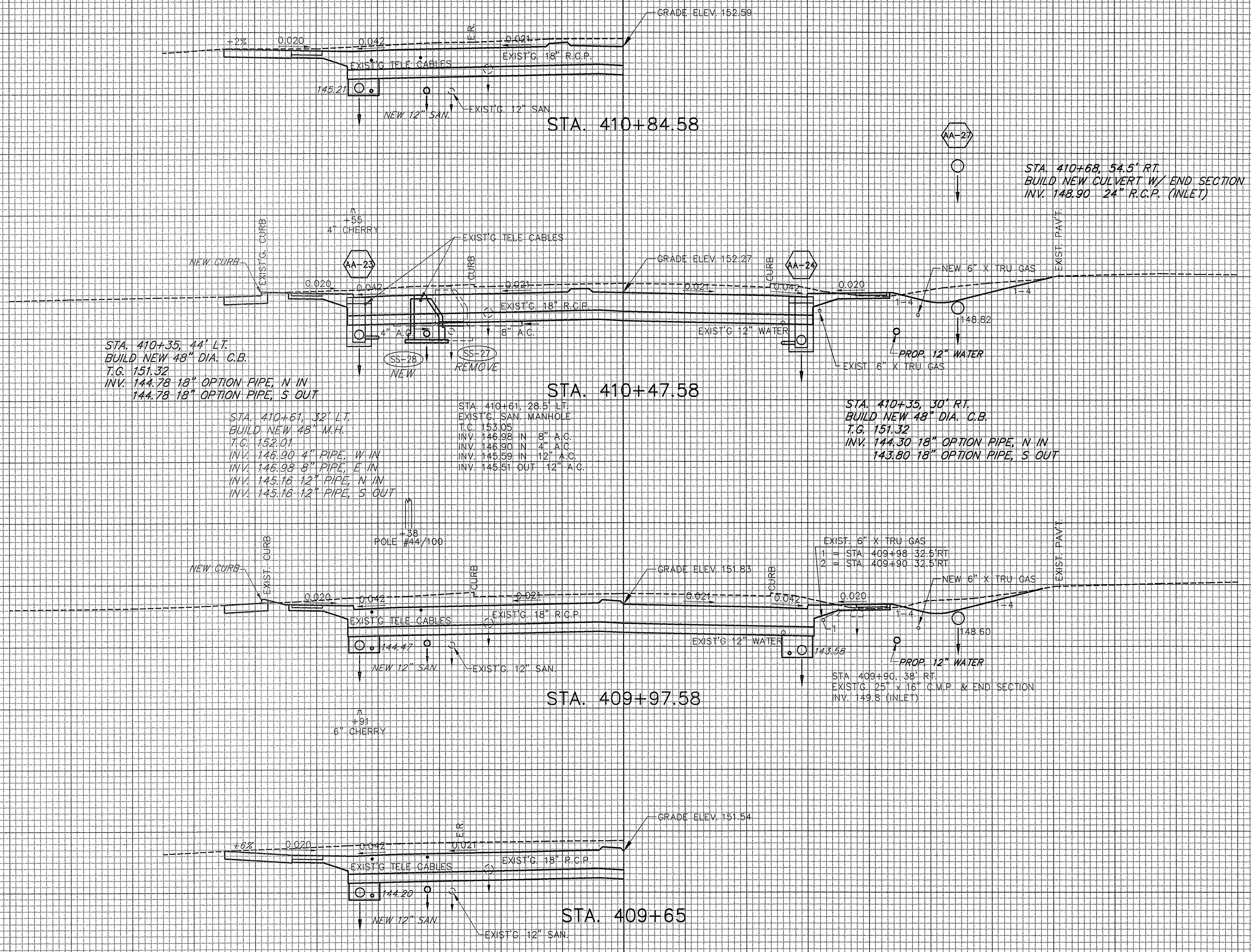


DATUM ELEV = 145.00

DATUM ELEV = 145.00

DATUM ELEV = 145.00

DATUM ELEV = 145.00



STA. 410+84.58

STA. 410+47.58

STA. 409+97.58

STA. 409+65

STA. 410+68, 54.5' RT.
 BUILD NEW CULVERT W/ END SECTION
 INV. 148.90 24" R.C.P. (INLET)

STA. 410+35, 44' LT.
 BUILD NEW 48" DIA. C.B.
 T.G. 151.32
 INV. 144.78 18" OPTION PIPE, N IN
 144.78 18" OPTION PIPE, S OUT

STA. 410+61, 32' LT.
 BUILD NEW 48" M.H.
 T.G. 152.01
 INV. 146.90 4" PIPE, W IN
 146.98 8" PIPE, E IN
 145.16 12" PIPE, N IN
 145.16 12" PIPE, S OUT

STA. 410+61, 28.5' LT.
 EXIST'G SAN. MANHOLE
 T.C. 153.05
 INV. 146.98 IN 8" A.C.
 INV. 148.90 IN 4" A.C.
 INV. 145.59 IN 12" A.C.
 INV. 145.51 OUT 12" A.C.

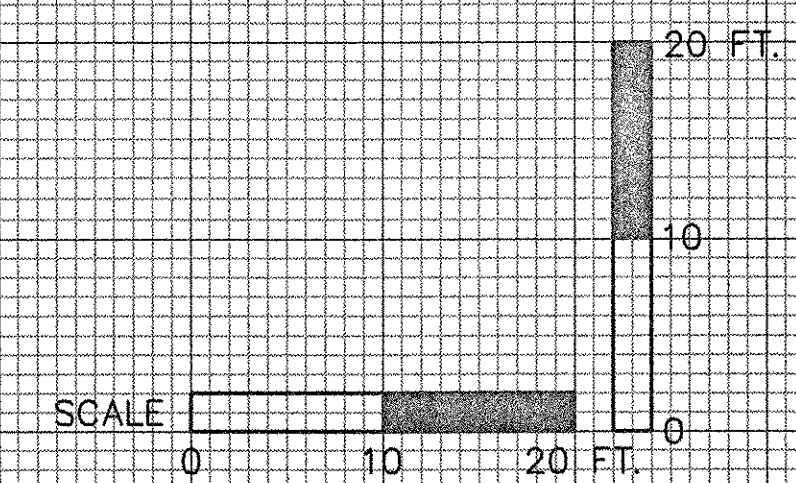
STA. 410+35, 30' RT.
 BUILD NEW 48" DIA. C.B.
 T.G. 151.32
 INV. 144.30 18" OPTION PIPE, N IN
 143.80 18" OPTION PIPE, S OUT

EXIST'G 6" X TRU GAS
 1 - STA. 409+98 32.5' RT
 2 - STA. 409+90 32.5' RT

STA. 409+90, 38' RT.
 EXIST'G 25' X 16" C.M.P. & END SECTION
 INV. 149.8 (INLET)

STA. 405+78.5 - 416+25 RT
 INST. NEW 6" X TRU GAS

STA. 405+82.5 - 428+86 RT
 EXIST'G 6" X TRU GAS TO BE RETIRED IN PLACE



SHELBURNE - SOUTH BURLINGTON
 STA. 409+65 TO STA. 410+85
 SURVEYED BY V.S.C. INC. DATE _____
 DRAWN BY E.A.A. INC. DATE _____
 TRACED BY E.A.A. INC. DATE _____
 PROJECT NH-EGC-019-4(28)
 CROSS-SECTION DWG. NO. 110
 SHEET 202 OF 283