

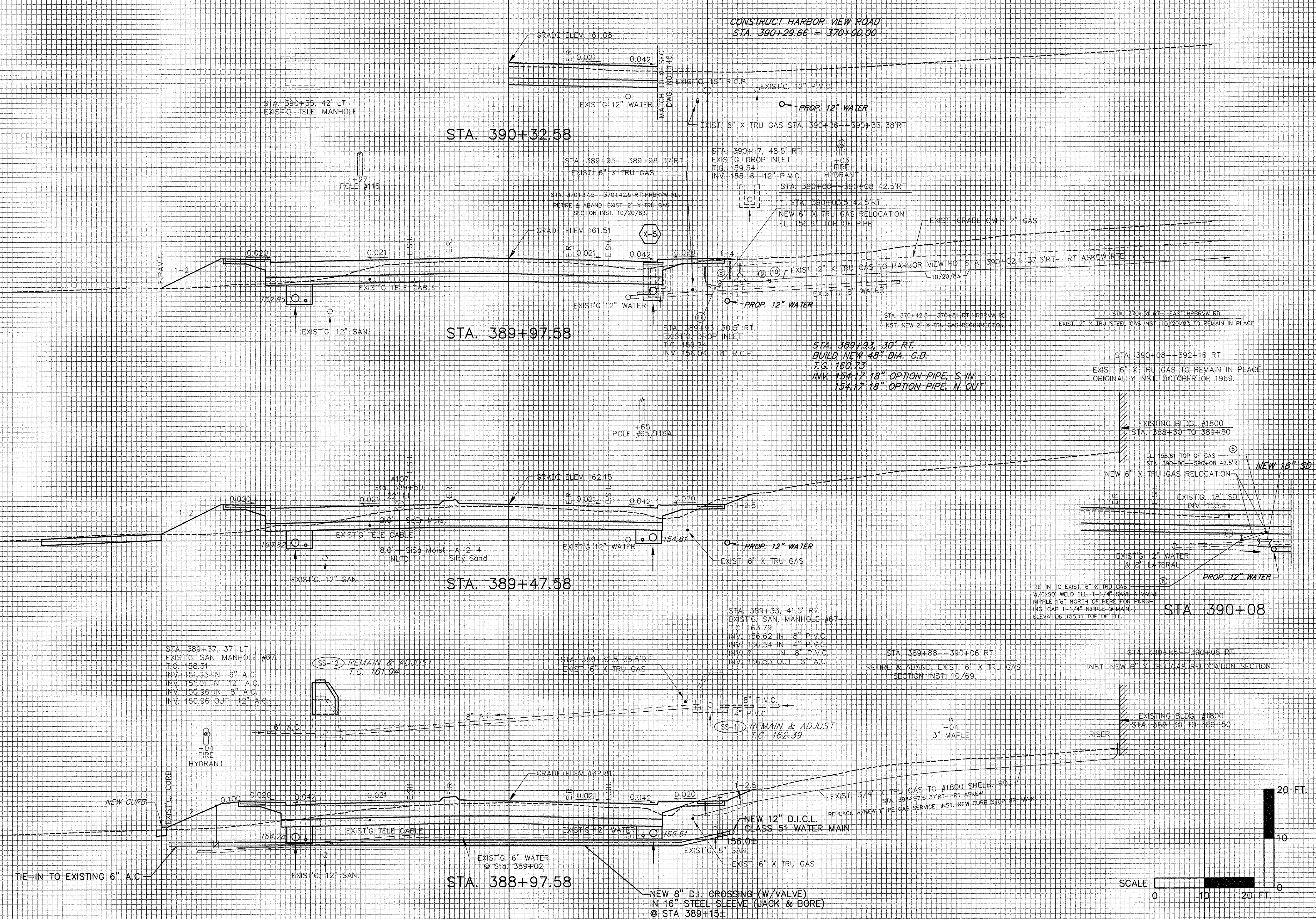
DATUM ELEV = 155.00

DATUM ELEV = 155.00

DATUM ELEV = 155.00

DATUM ELEV = 155.00

CONSTRUCT HARBOR VIEW ROAD  
STA. 390+29.66 = 370+00.00



STA. 389+37.37 LT.  
EXIST'G. SAN. MANHOLE #67  
T.G. 158.31  
INV. 151.35 IN. 6" A.C.  
INV. 151.01 IN. 12" A.C.  
INV. 150.96 IN. 8" A.C.  
INV. 150.96 OUT. 12" A.C.

SS-10 REMAIN & ADJUST  
T.C. 161.94

STA. 389+33.41 S RT.  
EXIST'G. SAN. MANHOLE #67-1  
T.C. 163.79  
INV. 156.82 IN. 8" P.V.C.  
INV. 156.54 IN. 4" P.V.C.  
INV. 2" IN. 8" P.V.C.  
INV. 156.53 OUT. 8" A.C.

STA. 389+88--390+06 RT.  
RETIRED & ABAND. EXIST. 6" X TRU GAS  
SECTION INST. 10/69

STA. 389+85--390+08 RT.  
INST. NEW 6" X TRU GAS RELOCATION SECTION

SS-11 REMAIN & ADJUST  
T.C. 162.39

STA. 384+32--389+86 RT.  
EXIST. 6" X TRU GAS TO REMAIN IN PLACE  
ORIGINALLY INST. OCTOBER OF 1969.

TIE-IN TO EXIST. 6" X TRU GAS  
W/6x90° WELD EL. -1-1/4" SAVE A VALVE  
NIPPLE 1'6" NORTH OF HERE FOR PURG-  
ING. GAP 1-1/4" NIPPLE & MAIN.  
ELEVATION 155.11 TOP OF EL.

