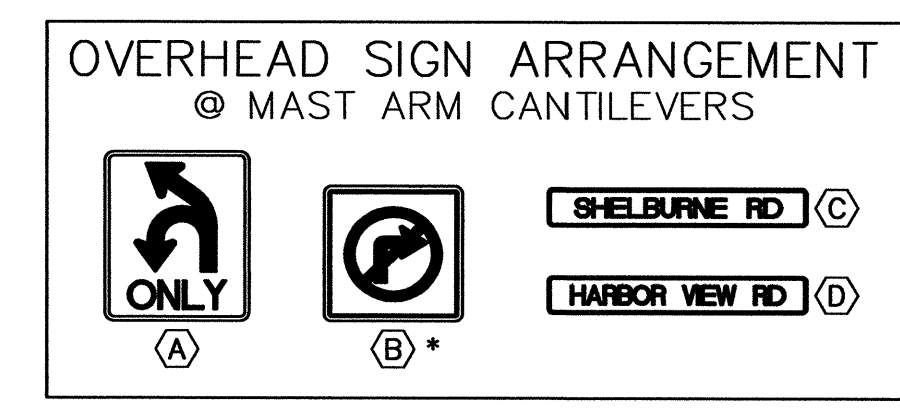
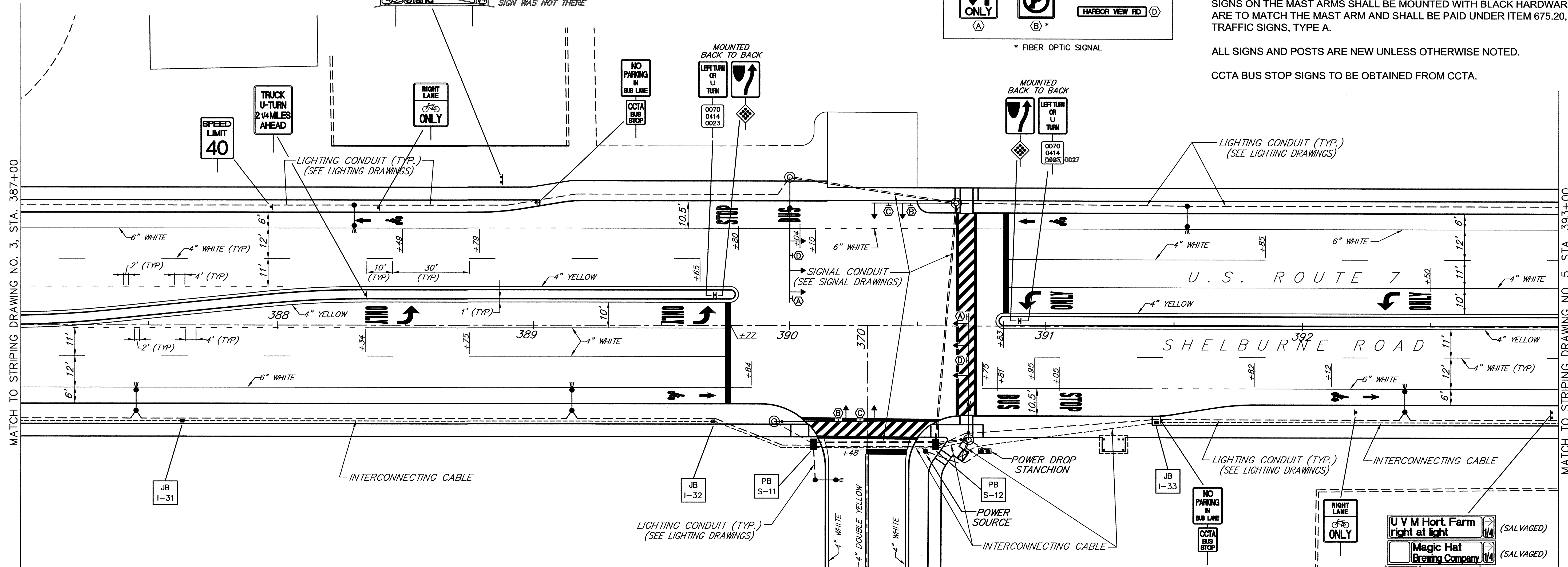


ERECTING SALVAGED SIGNS
6 EA



SIGN NOTES:
THE CONTRACTOR SHALL PROVIDE APPROPRIATE HARDWARE TO TOP MOUNT THE STREET NAME SIGNS, INCIDENTAL TO THE TRAFFIC SIGN ITEMS.
SIGNS ON THE MAST ARMS SHALL BE MOUNTED WITH BLACK HARDWARE ARE TO MATCH THE MAST ARM AND SHALL BE PAID UNDER ITEM 675.20, TRAFFIC SIGNS, TYPE A.
ALL SIGNS AND POSTS ARE NEW UNLESS OTHERWISE NOTED.
CCTA BUS STOP SIGNS TO BE OBTAINED FROM CCTA.



GENERAL NOTES:
SEE LIGHTING DRAWINGS NO's. 1 THROUGH 10 FOR LIGHTING CONDUITS, JUNCTION BOXES, WIRING AND SLEEVES.
SEE LIGHTING DRAWINGS NO's. 1 THROUGH 10 FOR INTERCONNECT CONDUITS, JUNCTION BOXES, WIRING AND SLEEVES
SEE SIGNAL DRAWINGS NO's. 1 THROUGH 6 FOR SIGNAL CONDUITS, PULLBOXES, WIRING, POLES AND SLEEVES.
INTERCONNECTING CABLE SHALL BE PLACED IN 2" PVC SCHEDULE 40 CONDUIT
SEE TYPICAL SECTION DRAWING NO. 5 FOR TYPICAL CONDUIT PLACEMENT DETAIL.

AS-BUILT REVISIONS

NO.	DATE	DESCRIPTION
1.	6/29/06	NOTES ADDED PER ENGINEERS MARK UPS

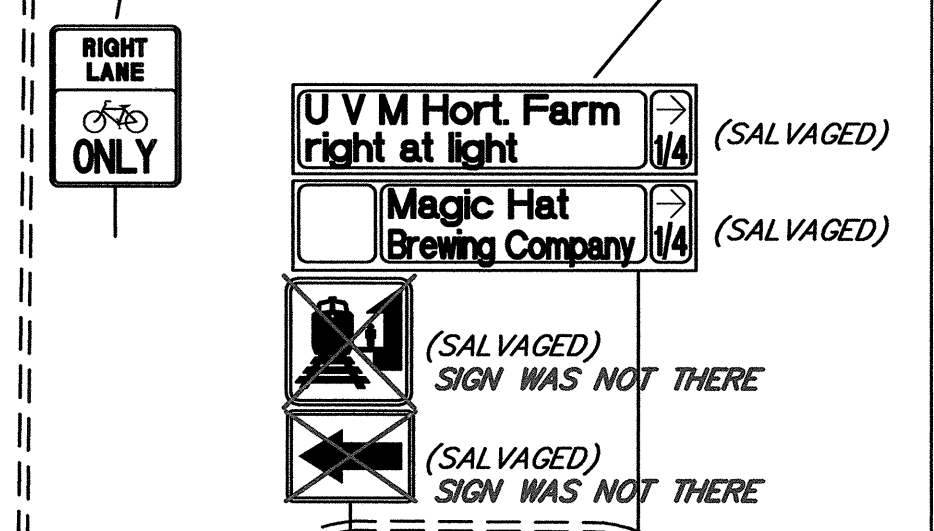
AS-BUILT LEGEND

—	WATER AS-BUILTS
—	SEWER AS-BUILTS
—	DRAINAGE AS-BUILTS
—	ELECTRICAL AS-BUILTS
—	PAVEMENT OTHER AS-BUILTS

LEGEND

	STREET LIGHT POLE
	UTILITY POLE
	LUMINAIRE
	STRAIN POLE W/ MAST ARM
	PEDESTRIAN POLE
	PULL BOX OR JUNCTION BOX
	SIGNAL CONDUIT
	INTERCONNECT CABLE CONDUIT
	LIGHTING CONDUIT
	SIGN MOUNTING POST(S)
	OVERHEAD MOUNTED SIGN

PB S-1 = SIGNAL PULLBOX NUMBER
JB I-1 = INTERCONNECT JUNCTION BOX NUMBER
JB L-1 = LIGHTING JUNCTION BOX NUMBER
PB P-1 = POWER SOURCE PULLBOX NUMBER



SHELburne — SOUTH BURLINGTON

SURVEYED BY V.S.C. INC. DATE _____
DRAWN BY E.A.A. INC. DATE _____
TRACED BY E.A.A. INC. DATE _____
PROJECT NH-EGC-019-4(28)
SIGN AND STRIPING DRAWING NO. 4
SHEET NO. 96 OF 283

DATUM
VERTICAL NGVD 1929
HORIZONTAL NAD 1927

4/4/03

