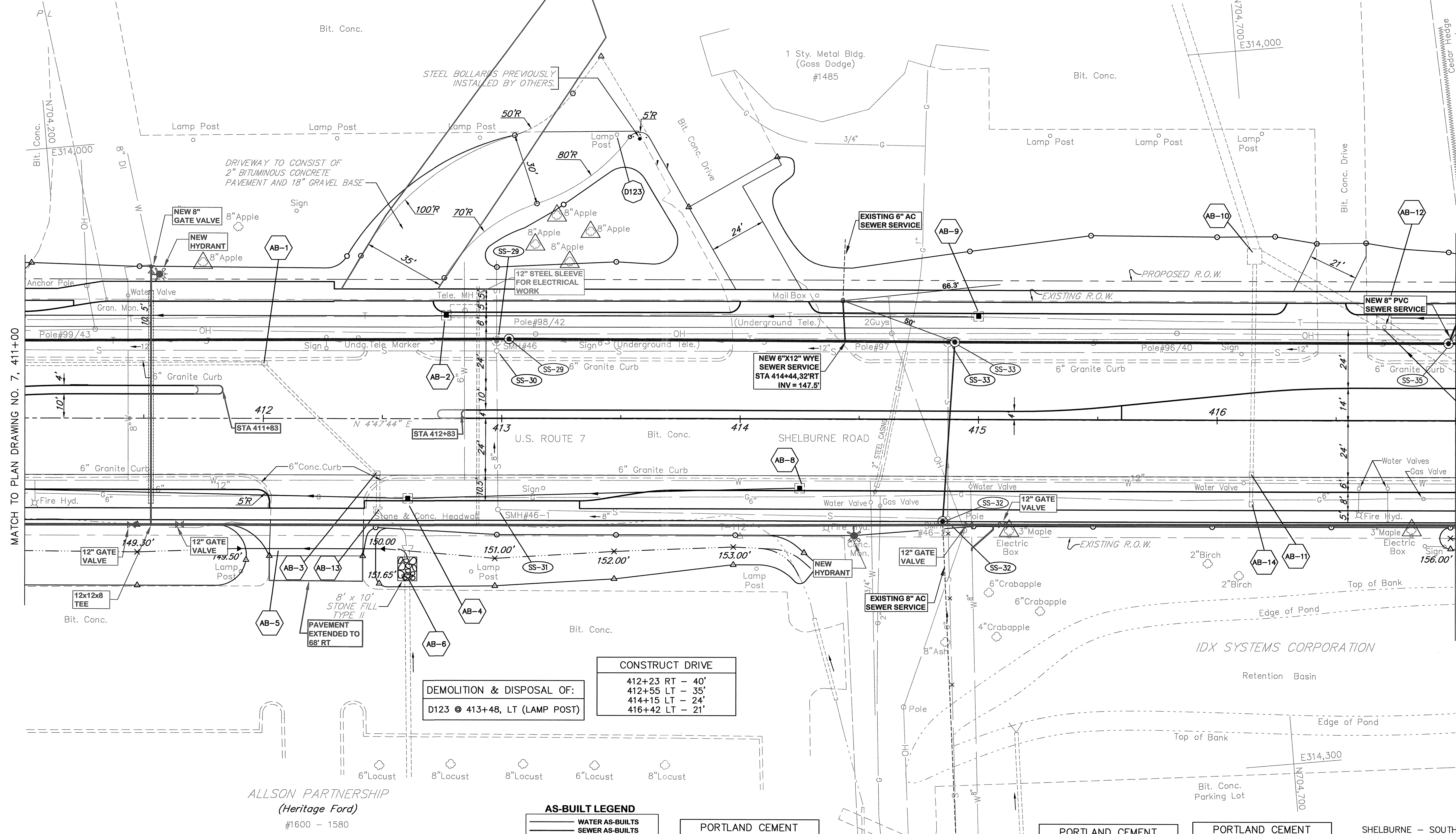
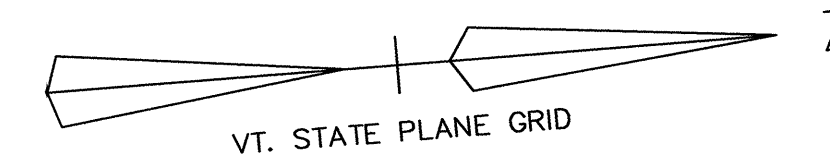


HOAR, DOUGLAS W. & CHERYL A.



MATCH TO PLAN DRAWING NO. 7, 411+00

MATCH TO PLAN DRAWING NO. 9, 417+00

DEMOLITION & DISPOSAL OF:
D123 @ 413+48, LT (LAMP POST)

CONSTRUCT DRIVE
412+23 RT - 40'
412+55 LT - 35'
414+15 LT - 24'
416+42 LT - 21'

AS-BUILT LEGEND

- WATER AS-BUILTS
- SEWER AS-BUILTS
- DRAINAGE AS-BUILTS
- ELECTRICAL AS-BUILTS
- PAVEMENT/OTHER AS-BUILTS

PORTLAND CEMENT CONCRETE SIDEWALK - 5"

411+00 - 411+96 RT
412+50 - 417+00 RT
411+00 - 412+23 LT
412+78 - 413+89 LT
414+36 - 416+22 LT
416+61 - 417+00 LT

PORTLAND CEMENT CONCRETE SIDEWALK - 8"

411+96 - 412+50 RT
412+23 - 412+78 LT
413+89 - 414+36 LT
416+22 - 416+61 LT

PORTLAND CEMENT CONCRETE SIDEWALK - 5" (MEDIAN WIDTH 4-6 FT.)

411+00 TO 411+73
412+73 TO 415+60

NOTES:

1. UNDERGROUND UTILITY LOCATIONS ARE PLOTTED BASED ON THE BEST AVAILABLE INFORMATION. LOCATIONS SHOULD BE VERIFIED BY THE CONTRACTOR BEFORE WORK.
2. SEE PLAN NOTES DRAWING NO. 1 FOR PLAN NOTES AND GENERAL NOTES.

NO.	DATE	DESCRIPTION
1.	3/3/06	UTILITIES, & PAV. EDITS

DATUM
VERTICAL NGVD 1929
HORIZONTAL NAD 1927

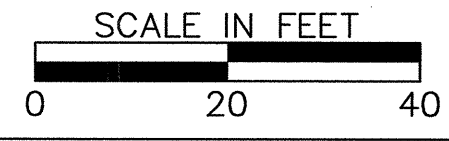
ALLSON PARTNERSHIP
(Heritage Ford)
#1600 - 1580

IDX SYSTEMS CORPORATION
Retention Basin

SHELBURNE - SOUTH BURLINGTON

SURVEYED BY V.S.C. INC. DATE _____
DRAWN BY E.A.A. INC. DATE _____
TRACED BY E.A.A. INC. DATE _____

PROJECT NH-EGC-019-4(28)
PLAN DRAWING NO. 8
SHEET NO. 76 OF 283



FOR PROFILE SEE PROFILE DRAWING NO. 8

K:\GIS\30008 (US Riv 7 Shelburne Riv)AS-BUILT\WATER-SEWER\AS-BUILT PL-30_4_08.DWG, layout1, 9/1/2006 11:39:47 AM, parmasa, 144-b4-60\11\T-BRL-HP\1055m East