

CONSTRUCT SIDEWALK RAMP	TYPE
390+07, RT	1
390+56, RT	1
390+69, LT	1
390+69, RT	2

PORTLAND CEMENT
CONCRETE SIDEWALK - 5"
387+00 - 390+10 RT
390+53 - 393+00 RT
387+00 - 390+08 LT
390+57 - 393+00 LT

CONSTRUCT DRIVE
389+98 LT-390+60 LT - 35'

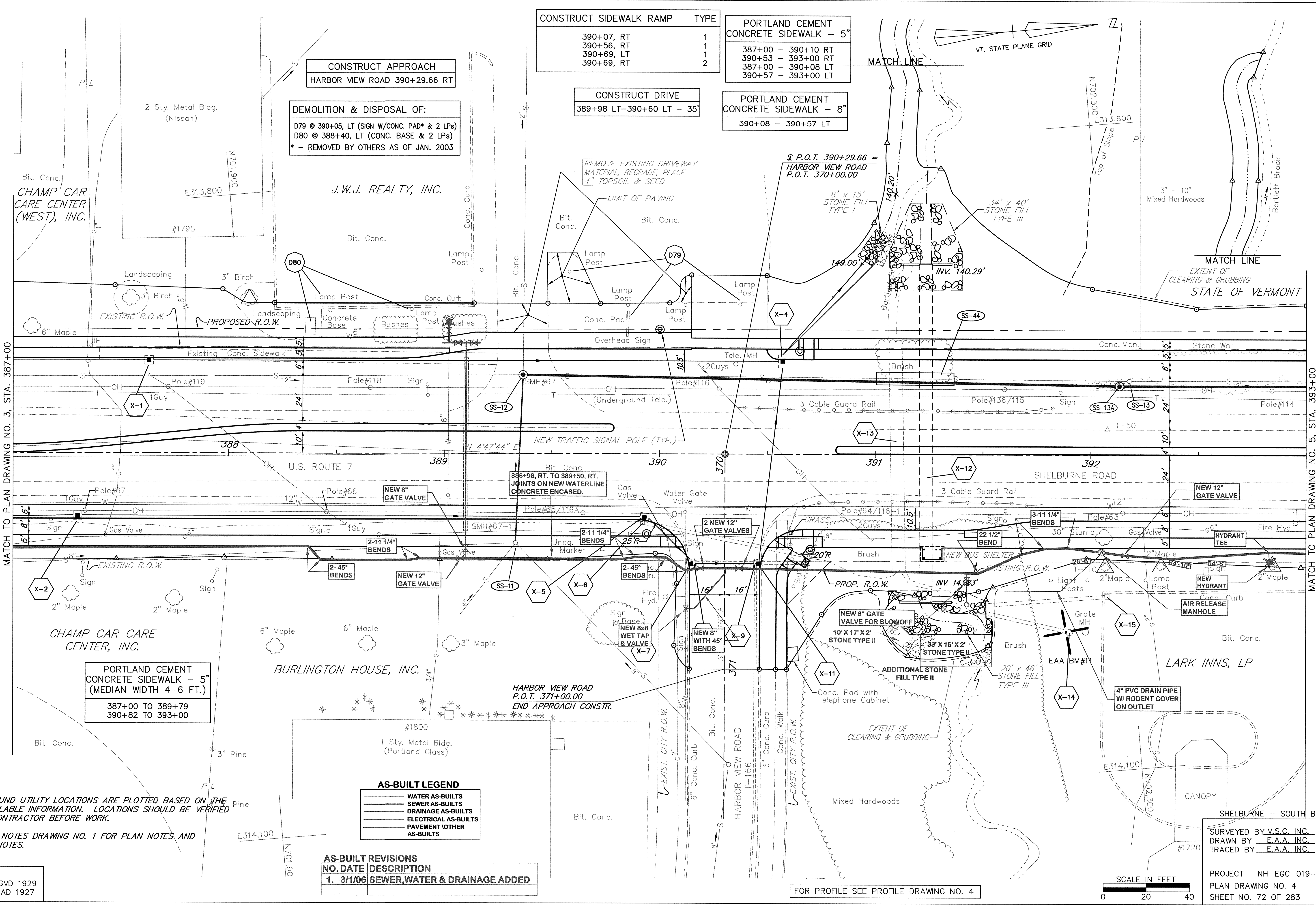
PORTLAND CEMENT
CONCRETE SIDEWALK - 8"
390+08 - 390+57 LT

CONSTRUCT APPROACH
HARBOR VIEW ROAD 390+29.66 RT

DEMOLITION & DISPOSAL OF:
D79 @ 390+05, LT (SIGN W/CONC. PAD* & 2 LPs)
D80 @ 388+40, LT (CONC. BASE & 2 LPs)
* - REMOVED BY OTHERS AS OF JAN. 2003

REMOVE EXISTING DRIVEWAY
MATERIAL, REGRADE, PLACE
4" TOPSOIL & SEED

P.O.T. 390+29.66 =
HARBOR VIEW ROAD
P.O.T. 370+00.00



MATCH TO PLAN DRAWING NO. 3, STA. 387+00

MATCH TO PLAN DRAWING NO. 5, STA. 393+00

- NOTES:**
- UNDERGROUND UTILITY LOCATIONS ARE PLOTTED BASED ON THE BEST AVAILABLE INFORMATION. LOCATIONS SHOULD BE VERIFIED BY THE CONTRACTOR BEFORE WORK.
 - SEE PLAN NOTES DRAWING NO. 1 FOR PLAN NOTES AND GENERAL NOTES.

AS-BUILT LEGEND

---	WATER AS-BUILTS
---	SEWER AS-BUILTS
---	DRAINAGE AS-BUILTS
---	ELECTRICAL AS-BUILTS
---	PAVEMENT/OTHER AS-BUILTS

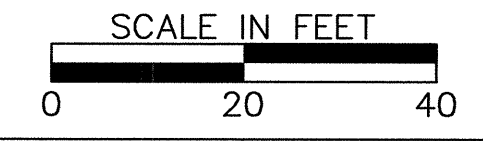
AS-BUILT REVISIONS

NO.	DATE	DESCRIPTION
1.	3/1/06	SEWER, WATER & DRAINAGE ADDED

DATUM
VERTICAL NGVD 1929
HORIZONTAL NAD 1927

SURVEYED BY V.S.C. INC. DATE _____
DRAWN BY E.A.A. INC. DATE _____
TRACED BY E.A.A. INC. DATE _____

PROJECT NH-EGC-019-4(28)
PLAN DRAWING NO. 4
SHEET NO. 72 OF 283



FOR PROFILE SEE PROFILE DRAWING NO. 4

K:\S30008 [US Rte 7 Shelburne Rd] AS-BUILT WATER SEWER GAS BUILT PL 28_4_04.DWG, Layout1, 9/17/2006 9:50:25 AM, parmasa, 104546101VT-BRL-HP1050m East