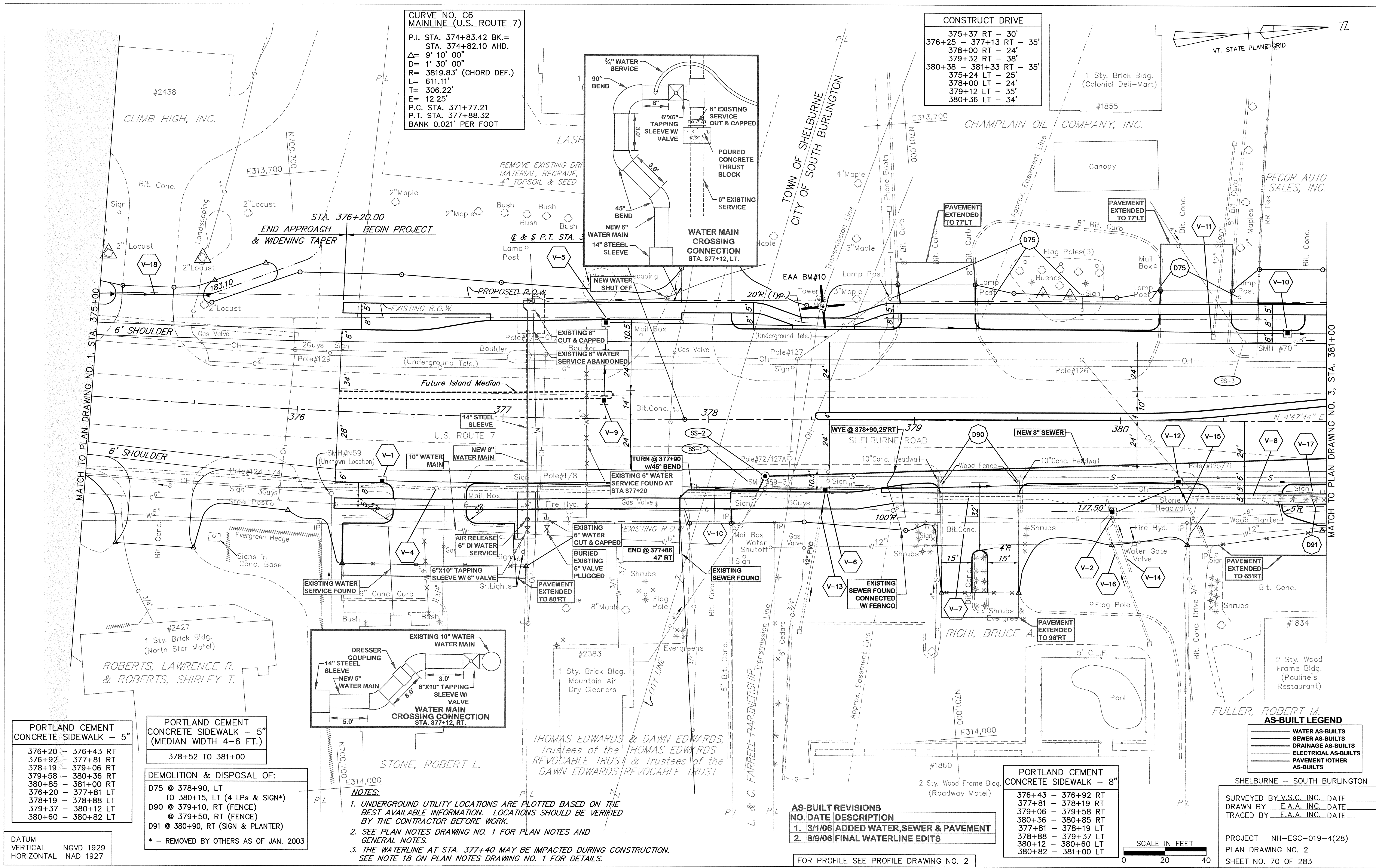
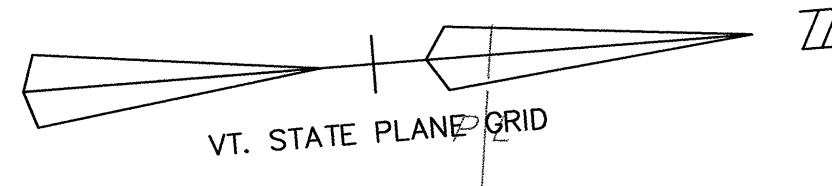


**CURVE NO. C6  
MAINLINE (U.S. ROUTE 7)**  
 P.I. STA. 374+83.42 BK.=  
 STA. 374+82.10 AHD.  
 $\Delta = 9^\circ 10' 00''$   
 $D = 1' 30' 00''$   
 $R = 3819.83' (CHORD DEF.)$   
 $L = 611.11'$   
 $T = 306.22'$   
 $E = 12.25'$   
 P.C. STA. 371+77.21  
 P.T. STA. 377+88.32  
 BANK 0.021' PER FOOT

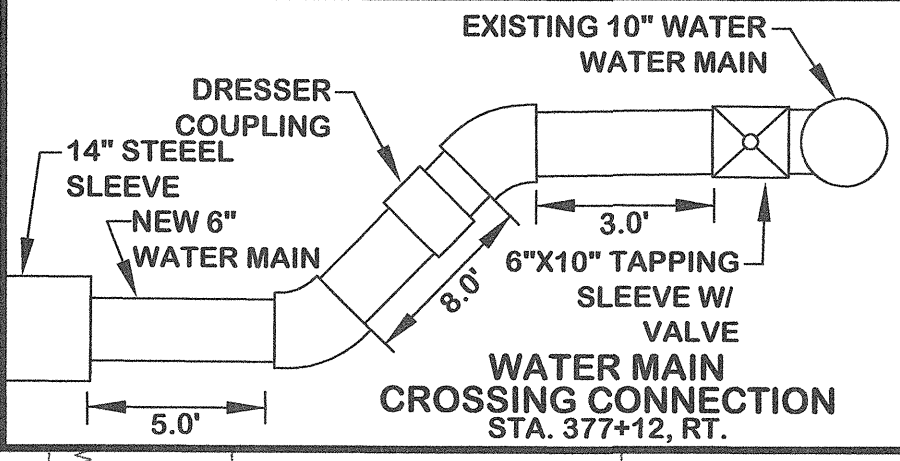
**CONSTRUCT DRIVE**  
 375+37 RT - 30'  
 376+25 - 377+13 RT - 35'  
 378+00 RT - 24'  
 379+32 RT - 38'  
 380+38 - 381+33 RT - 35'  
 375+24 LT - 25'  
 378+00 LT - 24'  
 379+12 LT - 35'  
 380+36 LT - 34'



**PORTLAND CEMENT  
CONCRETE SIDEWALK - 5"**  
 376+20 - 376+43 RT  
 376+92 - 377+81 RT  
 378+19 - 379+06 RT  
 379+58 - 380+36 RT  
 380+85 - 381+00 RT  
 376+20 - 377+81 LT  
 378+19 - 378+88 LT  
 379+37 - 380+12 LT  
 380+60 - 380+82 LT

**PORTLAND CEMENT  
CONCRETE SIDEWALK - 5"**  
 (MEDIAN WIDTH 4-6 FT.)  
 378+52 TO 381+00

**DEMOLITION & DISPOSAL OF:**  
 D75 @ 378+90, LT  
 TO 380+15, LT (4 LPs & SIGN\*)  
 D90 @ 379+10, RT (FENCE)  
 @ 379+50, RT (FENCE)  
 D91 @ 380+90, RT (SIGN & PLANTER)  
 \* - REMOVED BY OTHERS AS OF JAN. 2003



**NOTES:**  
 1. UNDERGROUND UTILITY LOCATIONS ARE PLOTTED BASED ON THE BEST AVAILABLE INFORMATION. LOCATIONS SHOULD BE VERIFIED BY THE CONTRACTOR BEFORE WORK.  
 2. SEE PLAN NOTES DRAWING NO. 1 FOR PLAN NOTES AND GENERAL NOTES.  
 3. THE WATERLINE AT STA. 377+40 MAY BE IMPACTED DURING CONSTRUCTION. SEE NOTE 18 ON PLAN NOTES DRAWING NO. 1 FOR DETAILS.

**AS-BUILT REVISIONS**  

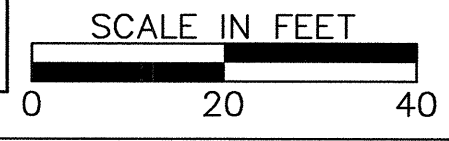
NO.	DATE	DESCRIPTION
1.	3/1/06	ADDED WATER, SEWER & PAVEMENT
2.	8/9/06	FINAL WATERLINE EDITS

**PORTLAND CEMENT  
CONCRETE SIDEWALK - 8"**  
 376+43 - 376+92 RT  
 377+81 - 378+19 RT  
 379+06 - 379+58 RT  
 380+36 - 380+85 RT  
 377+81 - 378+19 LT  
 378+88 - 379+37 LT  
 380+12 - 380+60 LT  
 380+82 - 381+00 LT

**AS-BUILT LEGEND**  
 WATER AS-BUILTS  
 SEWER AS-BUILTS  
 DRAINAGE AS-BUILTS  
 ELECTRICAL AS-BUILTS  
 PAVEMENT OTHER AS-BUILTS

SHELBURNE - SOUTH BURLINGTON  
 SURVEYED BY V.S.C. INC. DATE \_\_\_\_\_  
 DRAWN BY E.A.A. INC. DATE \_\_\_\_\_  
 TRACED BY E.A.A. INC. DATE \_\_\_\_\_

PROJECT NH-EGC-019-4(28)  
 PLAN DRAWING NO. 2  
 SHEET NO. 70 OF 283



K:\GIS\30008 (US Rte 7 Shelburne Proj)\AS-BUILT\WATER-SEWER\AS-BUILT PL-24\_4\_02.DWG, Layout1, 9/12/08 9:42:18 AM, parmba, 10x10x100V\FB\HP1055cm.dwg