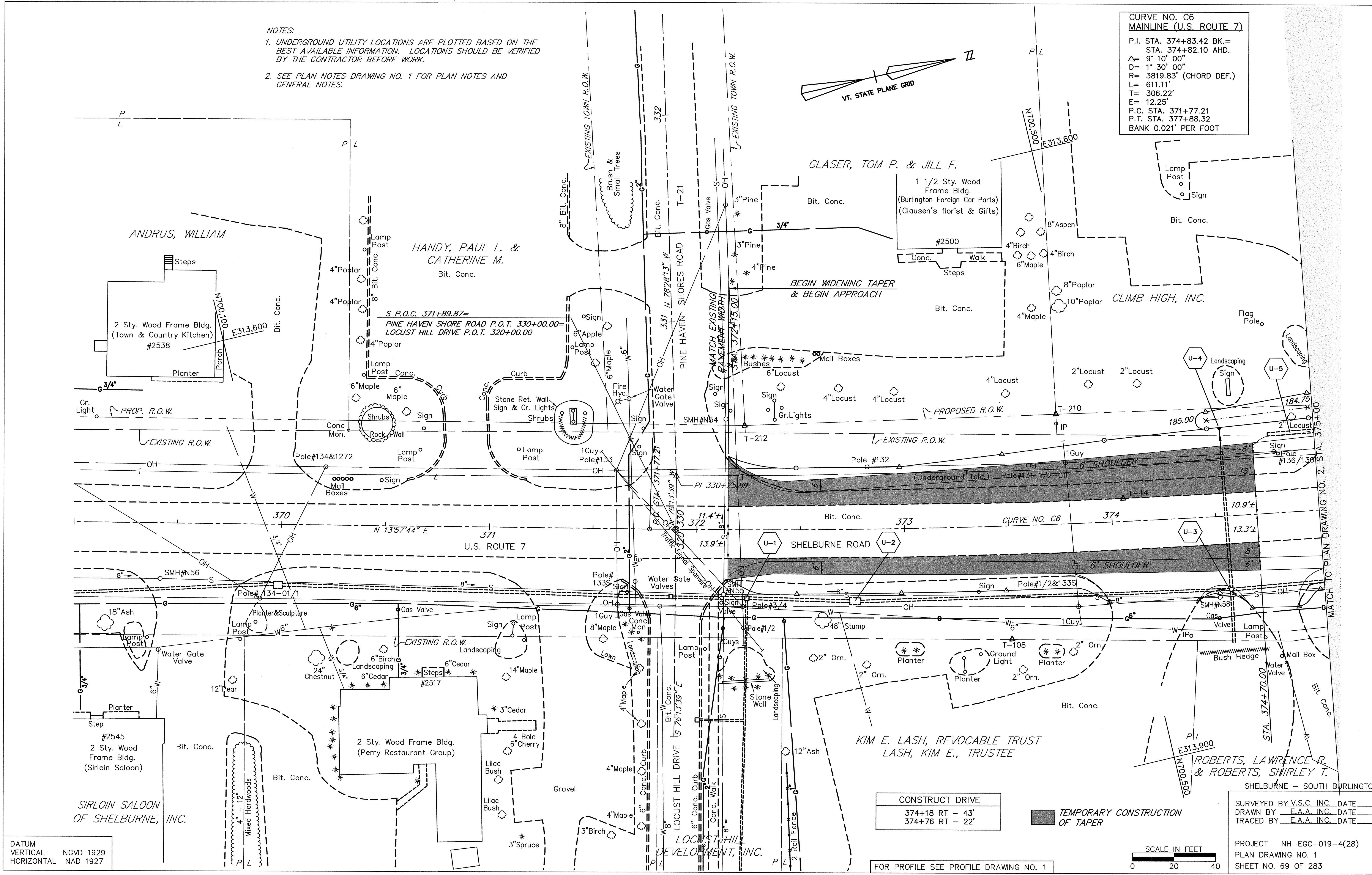
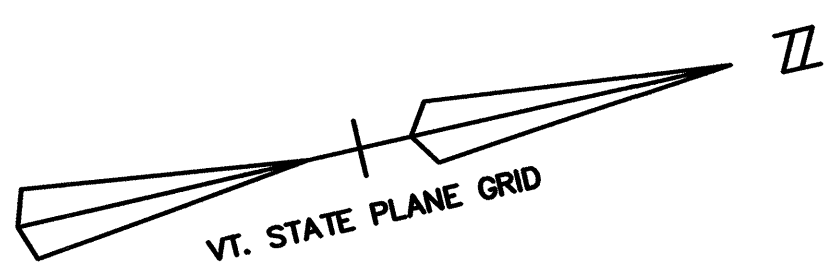


NOTES:

1. UNDERGROUND UTILITY LOCATIONS ARE PLOTTED BASED ON THE BEST AVAILABLE INFORMATION. LOCATIONS SHOULD BE VERIFIED BY THE CONTRACTOR BEFORE WORK.
2. SEE PLAN NOTES DRAWING NO. 1 FOR PLAN NOTES AND GENERAL NOTES.

**CURVE NO. C6
MAINLINE (U.S. ROUTE 7)**
 P.I. STA. 374+83.42 BK.=
 STA. 374+82.10 AHD.
 $\Delta = 9^\circ 10' 00''$
 $D = 1' 30' 00''$
 $R = 3819.83'$ (CHORD DEF.)
 $L = 611.11'$
 $T = 306.22'$
 $E = 12.25'$
 P.C. STA. 371+77.21
 P.T. STA. 377+88.32
 BANK 0.021' PER FOOT

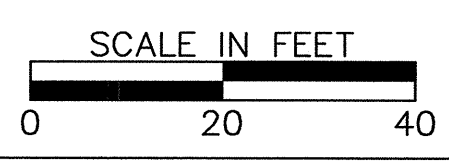


DATUM
 VERTICAL NGVD 1929
 HORIZONTAL NAD 1927

CONSTRUCT DRIVE
 374+18 RT - 43'
 374+76 RT - 22'

**TEMPORARY CONSTRUCTION
OF TAPER**

SURVEYED BY V.S.C. INC. DATE _____
 DRAWN BY E.A.A. INC. DATE _____
 TRACED BY E.A.A. INC. DATE _____



FOR PROFILE SEE PROFILE DRAWING NO. 1

PROJECT NH-EGC-019-4(28)
 PLAN DRAWING NO. 1
 SHEET NO. 69 OF 283

K:\9330008 [US Rte 7 Shelburne Rd] AS-BUILT WATER SEWERAS BUILT PL-23_4_01.DWG, Layout1, 9/1/2008 1:47:22 PM, parmasa, v:\cadd\401\VT-BRL-HP\0850m East