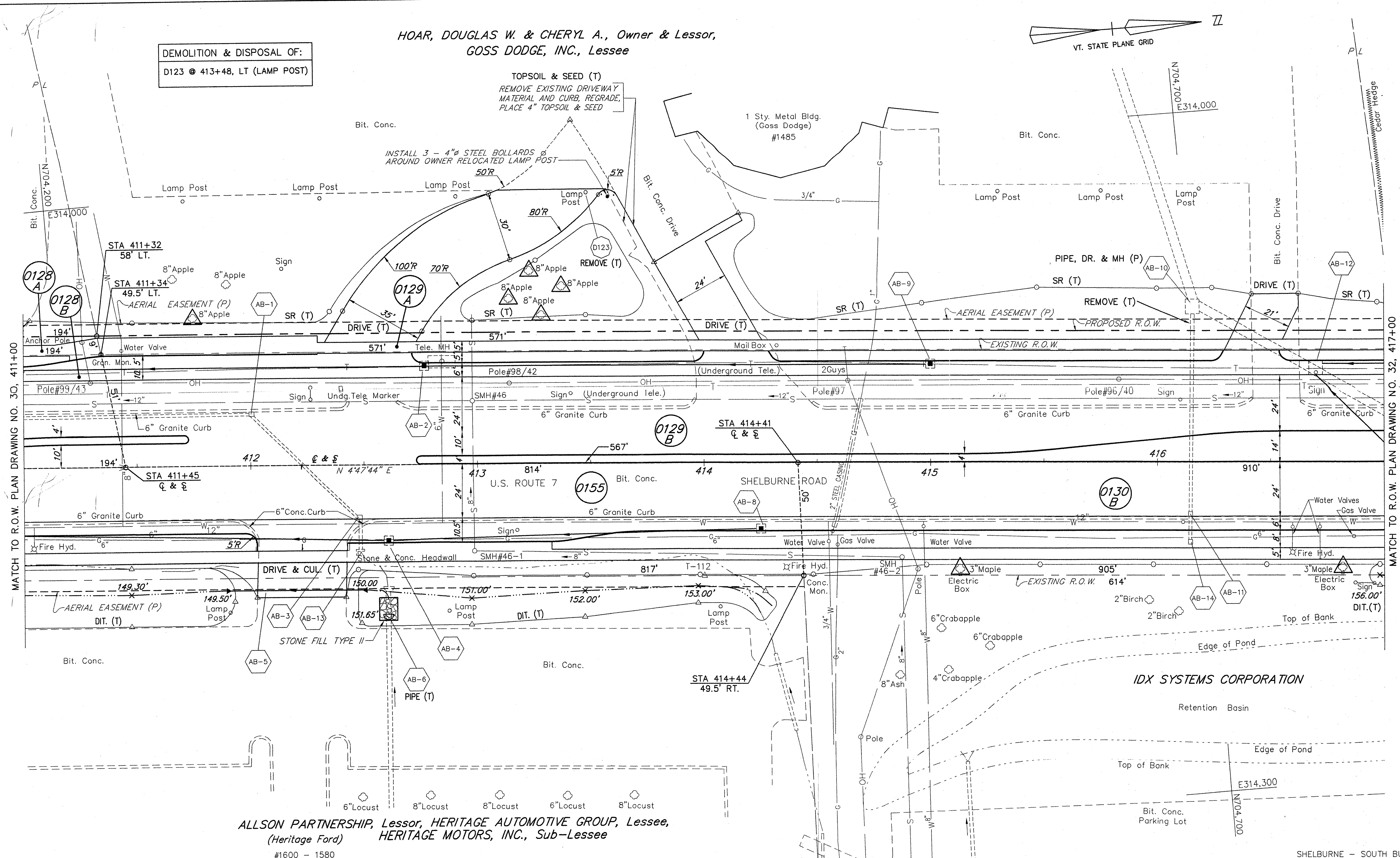
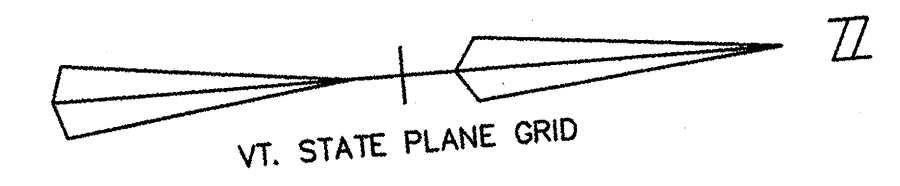


HOAR, DOUGLAS W. & CHERYL A., Owner & Lessor,
GOSS DODGE, INC., Lessee

DEMOLITION & DISPOSAL OF:
D123 @ 413+48, LT (LAMP POST)

TOPSOIL & SEED (T)
REMOVE EXISTING DRIVEWAY
MATERIAL AND CURB, REGRADE,
PLACE 4" TOPSOIL & SEED



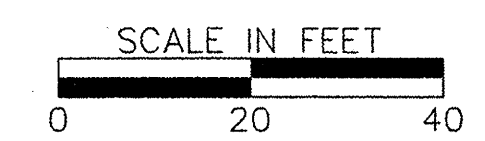
MATCH TO R.O.W. PLAN DRAWING NO. 30, 411+00

MATCH TO R.O.W. PLAN DRAWING NO. 32, 417+00

ALLSON PARTNERSHIP, Lessor, HERITAGE AUTOMOTIVE GROUP, Lessee,
(Heritage Ford) HERITAGE MOTORS, INC., Sub-Lessee
#1600 - 1580

IDX SYSTEMS CORPORATION
Retention Basin

CONSTRUCT DRIVE	
412+23 RT	- 40'
412+55 LT	- 35'
414+15 LT	- 24'
416+42 LT	- 21'



R.O.W. PLAN
THIS SHEET TO BE USED
FOR R.O.W. INFORMATION ONLY.

SHELBURNE - SOUTH BURLINGTON
SURVEYED BY V.S.C. INC. DATE _____
DRAWN BY F.A.A. INC. DATE _____
TRACED BY F.A.A. INC. DATE _____
PROJECT F-EGC-019-4(19)
R.O.W. DRAWING NO. 31
SHEET NO. 28 OF 283

DATUM
VERTICAL NGVD 1929
HORIZONTAL NAD 1927