

MATCH TO PLAN DRAWING NO. 34, STA. 401+97

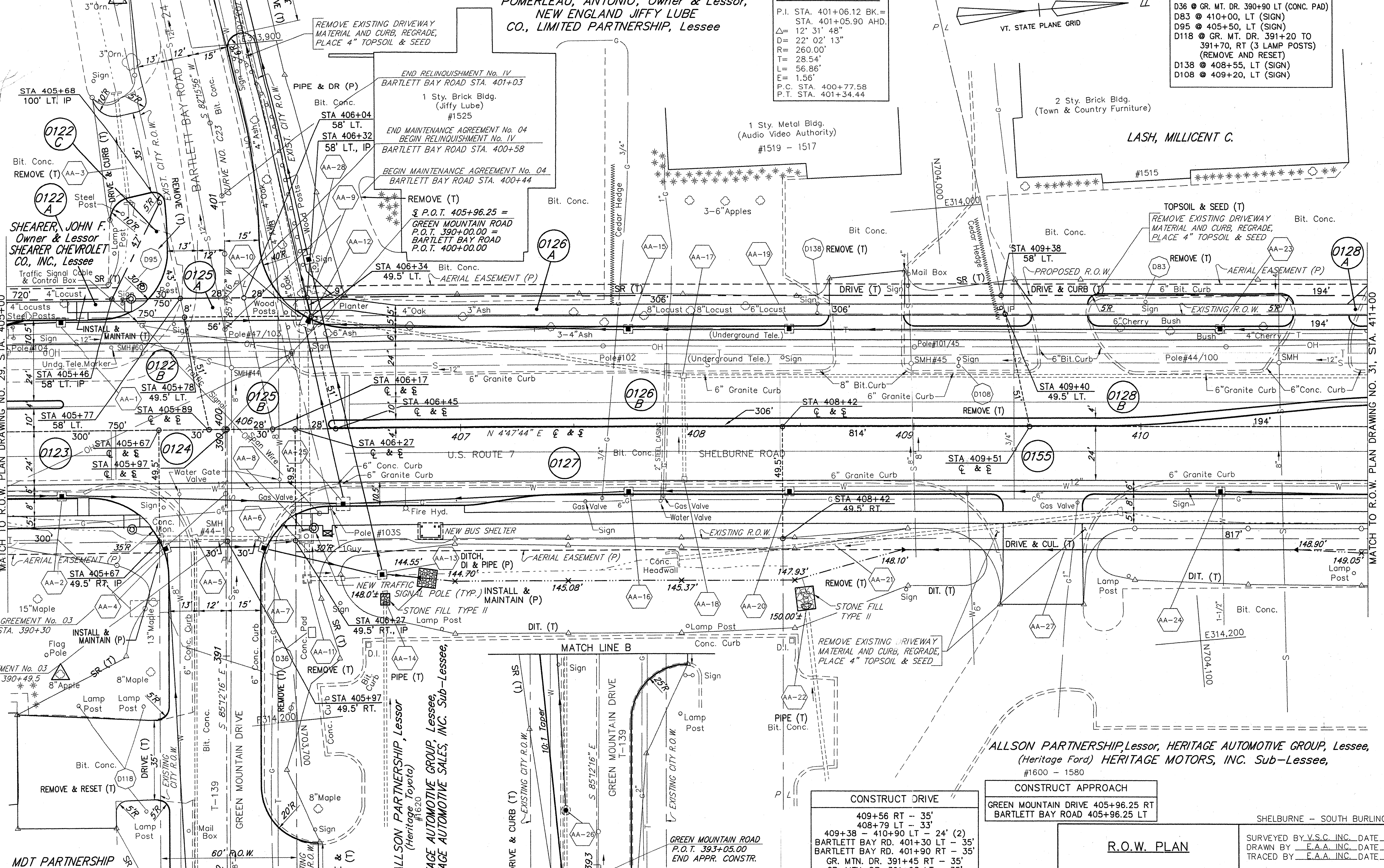
POMERLEAU, ANTONIO, Owner & Lessor,
NEW ENGLAND JIFFY LUBE
CO., LIMITED PARTNERSHIP, Lessee

BARTLETT BAY ROAD
P.I. STA. 401+06.12 BK.=
STA. 401+05.90 AHD.
Δ= 12' 31' 48"
D= 22' 02' 13"
R= 260.00'
T= 28.54'
L= 56.86'
E= 1.56'
P.C. STA. 400+77.58
P.T. STA. 401+34.44

DEMOLITION & DISPOSAL OF:
D36 @ GR. MT. DR. 390+90 LT (CONC. PAD)
D83 @ 410+00, LT (SIGN)
D95 @ 405+50, LT (SIGN)
D118 @ GR. MT. DR. 391+20 TO
391+70, RT (3 LAMP POSTS)
(REMOVE AND RESET)
D138 @ 408+55, LT (SIGN)
D108 @ 409+20, LT (SIGN)

VT. STATE PLANE GRID

LASH, MILLICENT C.



SHEARER, JOHN F.
Owner & Lessor
SHEARER CHEVROLET
CO., INC., Lessee

ALLSON PARTNERSHIP, Lessor
(Heritage Toyota)
HERITAGE AUTOMOTIVE GROUP, Lessee,
HERITAGE AUTOMOTIVE SALES, INC. Sub-Lessee.

ALLSON PARTNERSHIP, Lessor, HERITAGE AUTOMOTIVE GROUP, Lessee,
(Heritage Ford) HERITAGE MOTORS, INC. Sub-Lessee,
#1600 - 1580

CONSTRUCT DRIVE
409+56 RT - 35'
408+79 LT - 33'
409+38 - 410+90 LT - 24' (2)
BARTLETT BAY RD. 401+30 LT - 35'
BARTLETT BAY RD. 401+90 RT - 35'
GR. MTN. DR. 391+45 RT - 35'
GR. MTN. DR. 391+98 LT - 35'

CONSTRUCT APPROACH
GREEN MOUNTAIN DRIVE 405+96.25 RT
BARTLETT BAY ROAD 405+96.25 LT

R.O.W. PLAN

THIS SHEET TO BE USED
FOR R.O.W. INFORMATION ONLY.

SURVEYED BY V.S.C. INC. DATE _____
DRAWN BY E.A.A. INC. DATE _____
TRACED BY E.A.A. INC. DATE _____

PROJECT F-EGC-019-4(19)
R.O.W. DRAWING NO. 30
SHEET NO. 2.7 OF 2.8.3

DATUM
VERTICAL NGVD 1929
HORIZONTAL NAD 1927

SCALE IN FEET
0 20 40

C.O.#12, 9/13/02