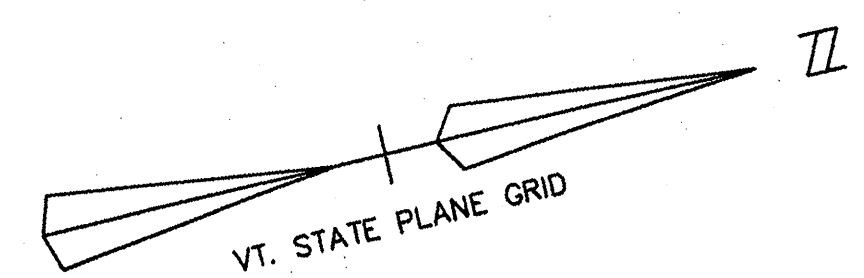


CONSTRUCT APPROACH
PINE HAVEN SHORE ROAD 371+89.87 LT

CURVE NO. C6
MAINLINE (U.S. ROUTE 7)
P.I. STA. 374+83.42 BK. =
STA. 374+82.10 AHD.
Δ = 9° 10' 00"
D = 1' 30" 00"
R = 3819.83' (CHORD DEF.)
L = 611.11'
T = 306.22'
E = 12.25'
P.C. STA. 371+77.21
P.T. STA. 377+88.32
BANK 0.021' PER FOOT

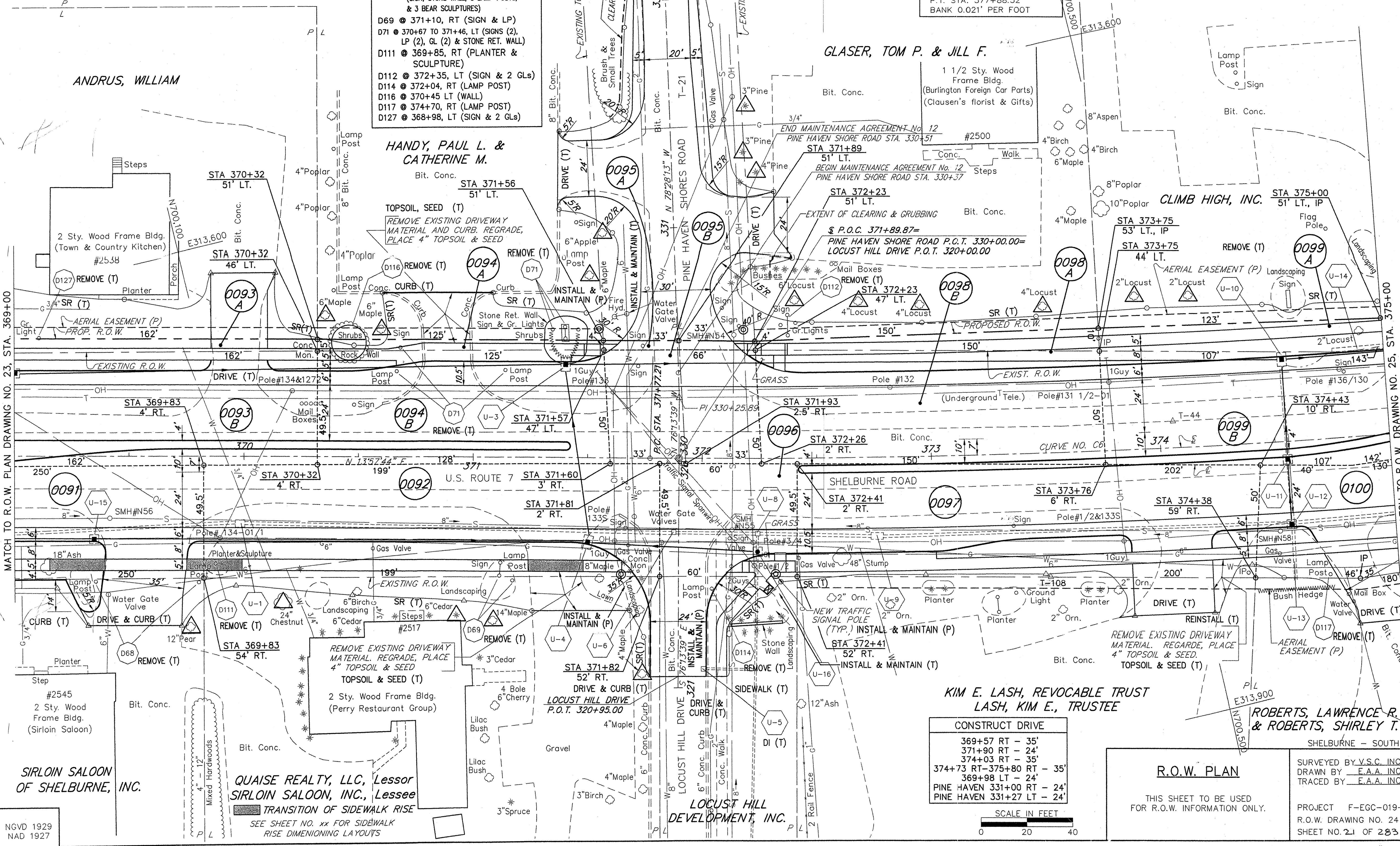


DEMOLITION & DISPOSAL OF:
D68 @ 367+75 TO 369+80, RT
(SIGN, STONE WALL, 3 LAMP POSTS,
& 3 BEAR SCULPTURES)
D69 @ 371+10, RT (SIGN & LP)
D71 @ 370+67 TO 371+46, LT (SIGNS (2),
LP (2), GL (2) & STONE RET. WALL)
D111 @ 369+85, RT (PLANTER &
SCULPTURE)
D112 @ 372+35, LT (SIGN & 2 GLs)
D114 @ 372+04, RT (LAMP POST)
D116 @ 370+45 LT (WALL)
D117 @ 374+70, RT (LAMP POST)
D127 @ 368+98, LT (SIGN & 2 GLs)

GLASER, TOM P. & JILL F.
1 1/2 Sty. Wood
Frame Bldg.
(Burlington Foreign Car Parts)
(Clausen's florist & Gifts)

HANDY, PAUL L. &
CATHERINE M.
Bit. Conc.

CLIMB HIGH, INC.
51' LT., IP



MATCH TO R.O.W. PLAN DRAWING NO. 23, STA. 369+00

MATCH TO R.O.W. DRAWING NO. 25, STA. 375+00

CONSTRUCT DRIVE
369+57 RT - 35'
371+90 RT - 24'
374+03 RT - 35'
374+73 RT-375+80 RT - 35'
369+98 LT - 24'
PINE HAVEN 331+00 RT - 24'
PINE HAVEN 331+27 LT - 24'

SCALE IN FEET
0 20 40

R.O.W. PLAN
THIS SHEET TO BE USED
FOR R.O.W. INFORMATION ONLY.
PROJECT F-EGC-019-4(19)
R.O.W. DRAWING NO. 24
SHEET NO. 21 OF 283

DATUM
VERTICAL NGVD 1929
HORIZONTAL NAD 1927