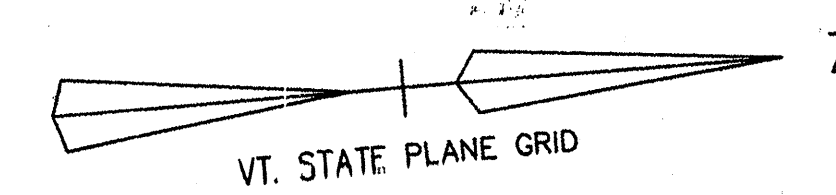
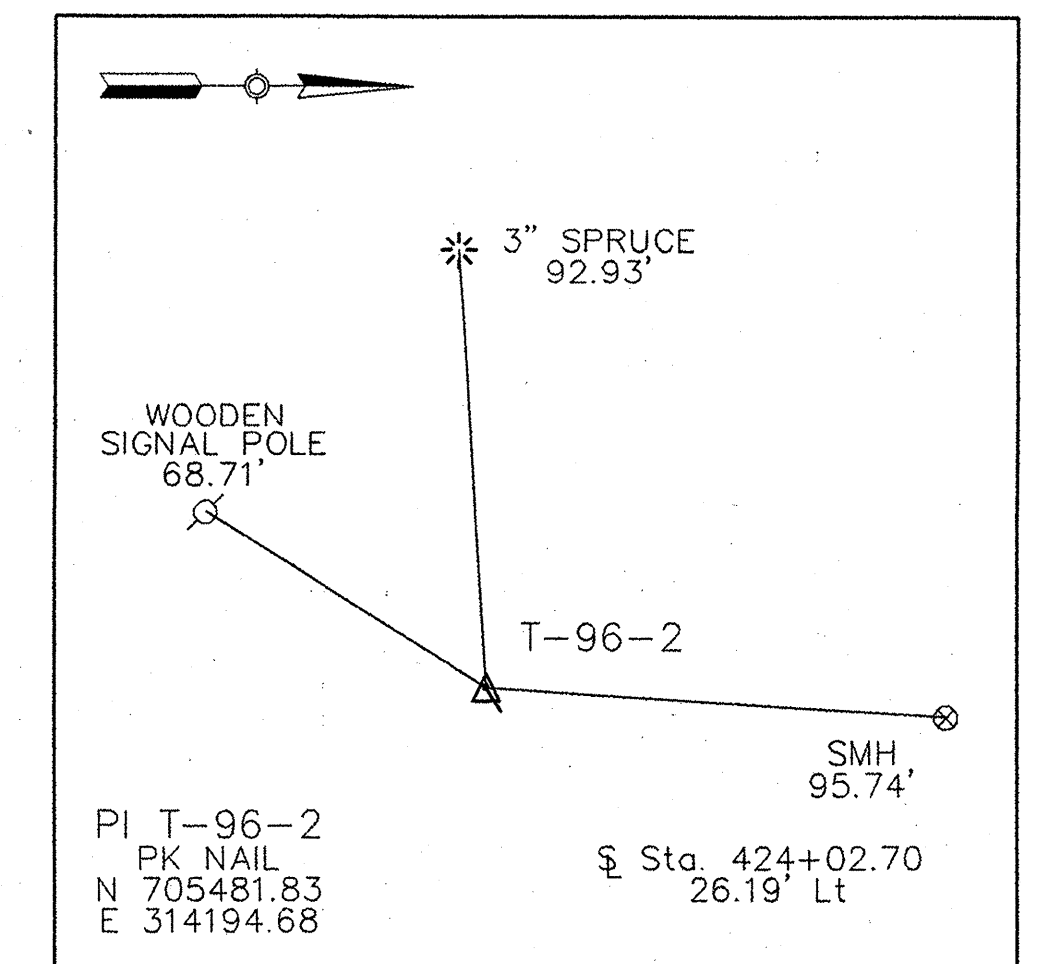
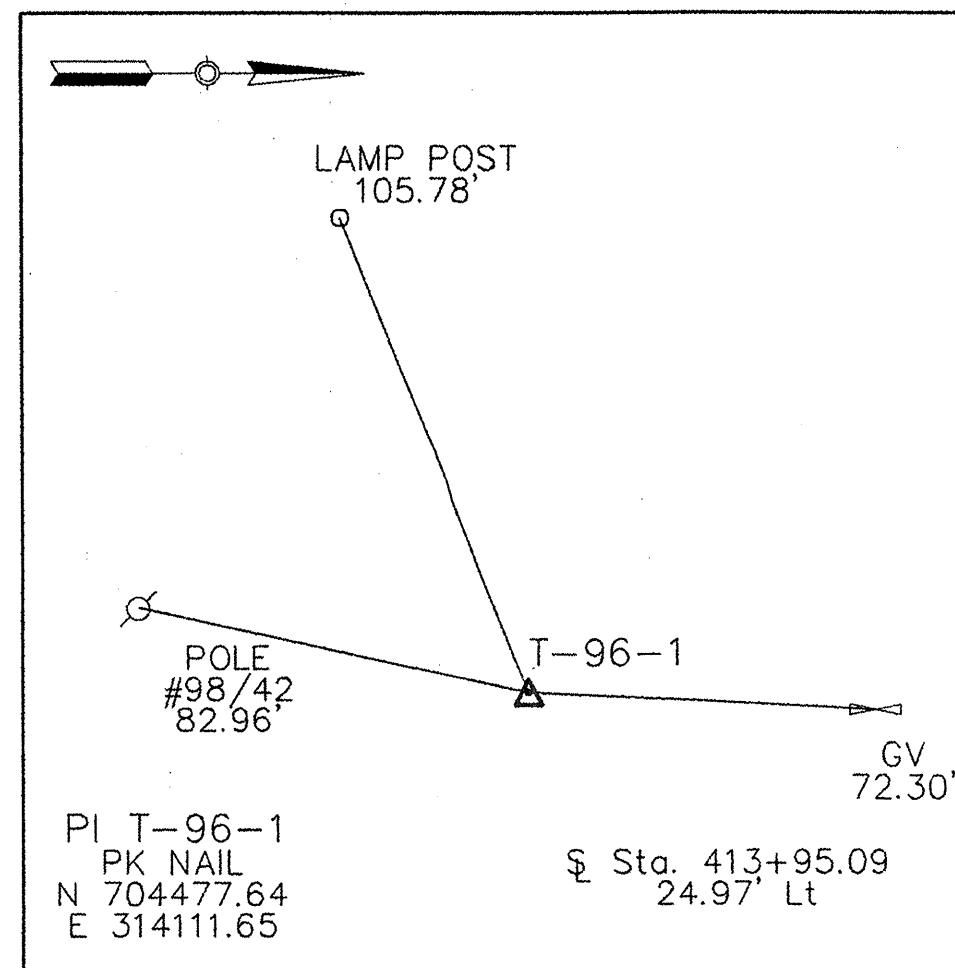
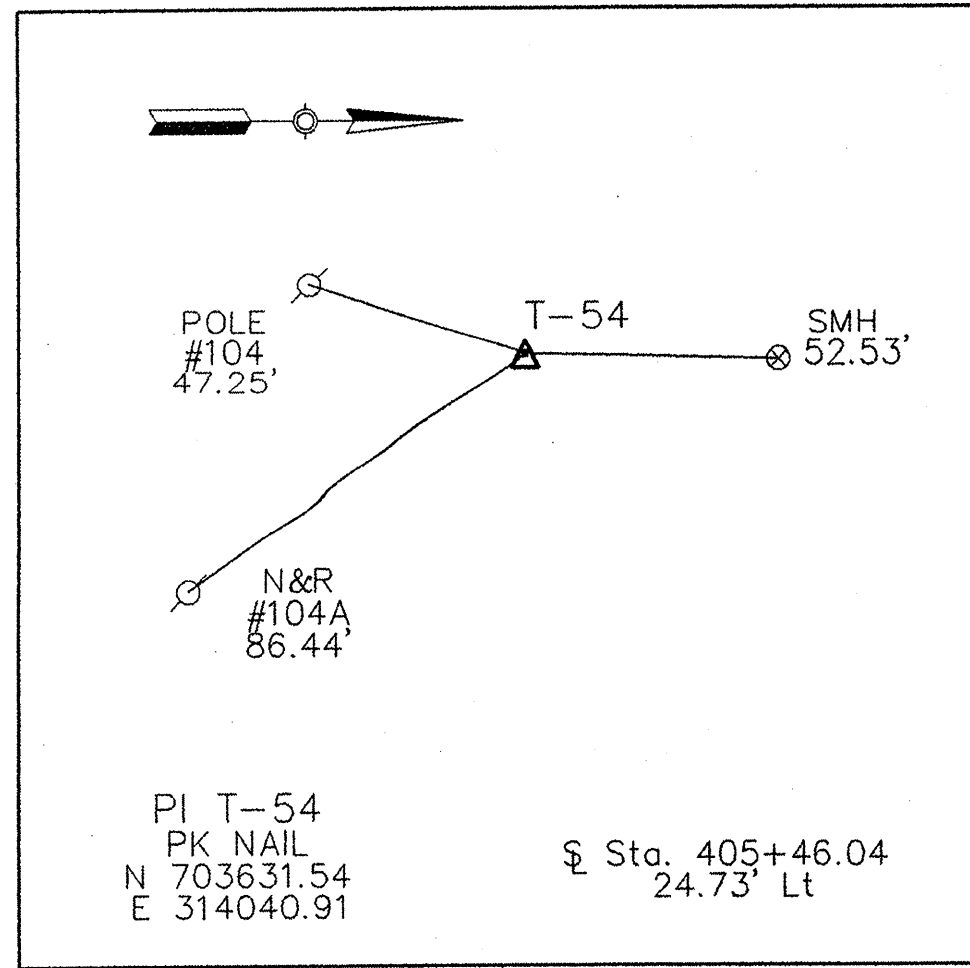


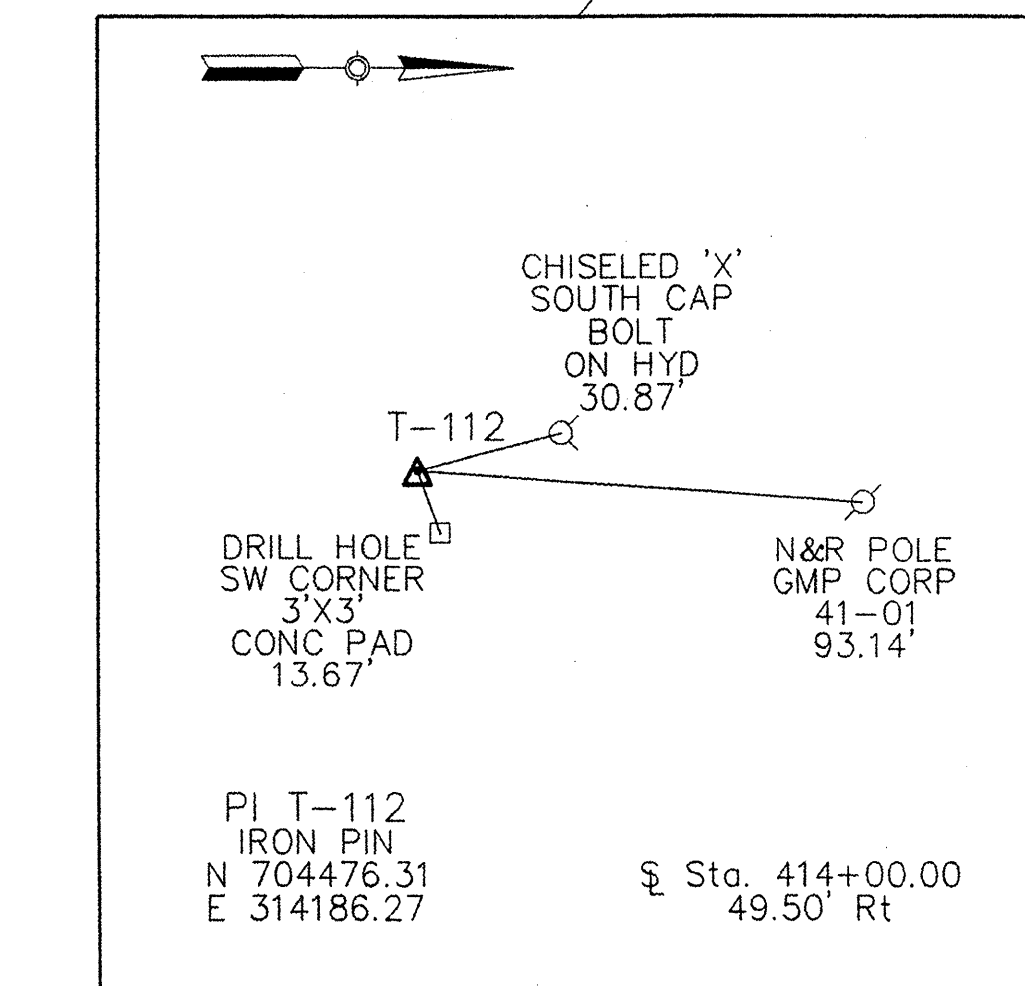
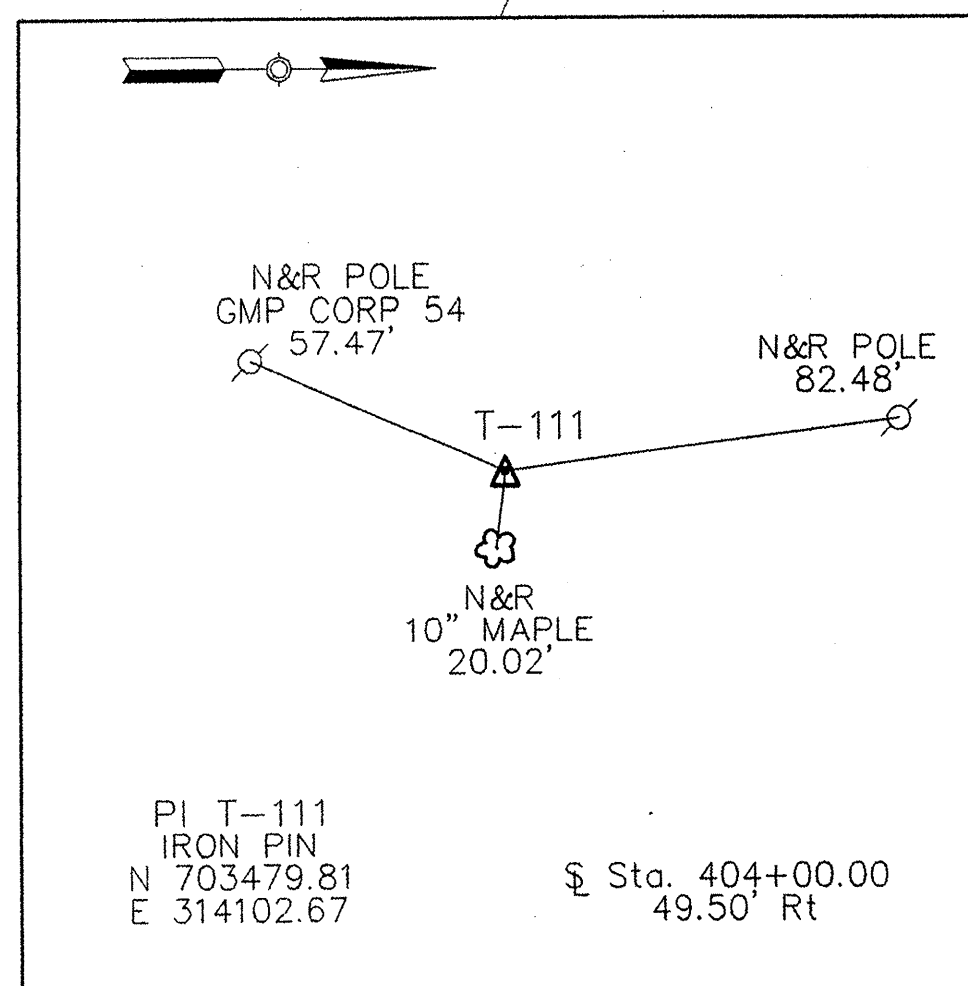
TABLE OF BENCHMARKS

BM #	STATION	OFFSET	ELEVATION	DESCRIPTION
EAA BM 12	404+96	46' LT.	151.660	IS A CHISELED SQUARE IN THE S.W. CORNER OF A CONCRETE TRANSFORMER PAD LOCATED ON THE WEST SIDE OF U.S. RTE 7 NEAR A CHEVY CAR DEALER, APPROX. 100 FEET SOUTH OF THE INTERSECTION OF U.S. ROUTE 7 AND BARTLETT BAY ROAD.
EAA BM 13	417+21	35' LT.	158.352	IS A RAILROAD SPIKE SET IN POLE #45, LOCATED ON THE WEST SIDE OF U.S. RTE 7, APPROX. 675 FEET SOUTH OF THE INTERSECTION OF U.S. ROUTE 7 AND HOLMES ROAD.
EAA BM 14	429+12	57' LT.	186.657	IS A CHISELED SQUARE IN THE S.E. CORNER OF A CONCRETE TRANSFORMER PAD LOCATED ON THE WEST SIDE OF U.S. ROUTE 7, APPROX. 75 FEET NORTH OF THE INTERSECTION OF U.S. ROUTE 7 AND IMPERIAL DRIVE.

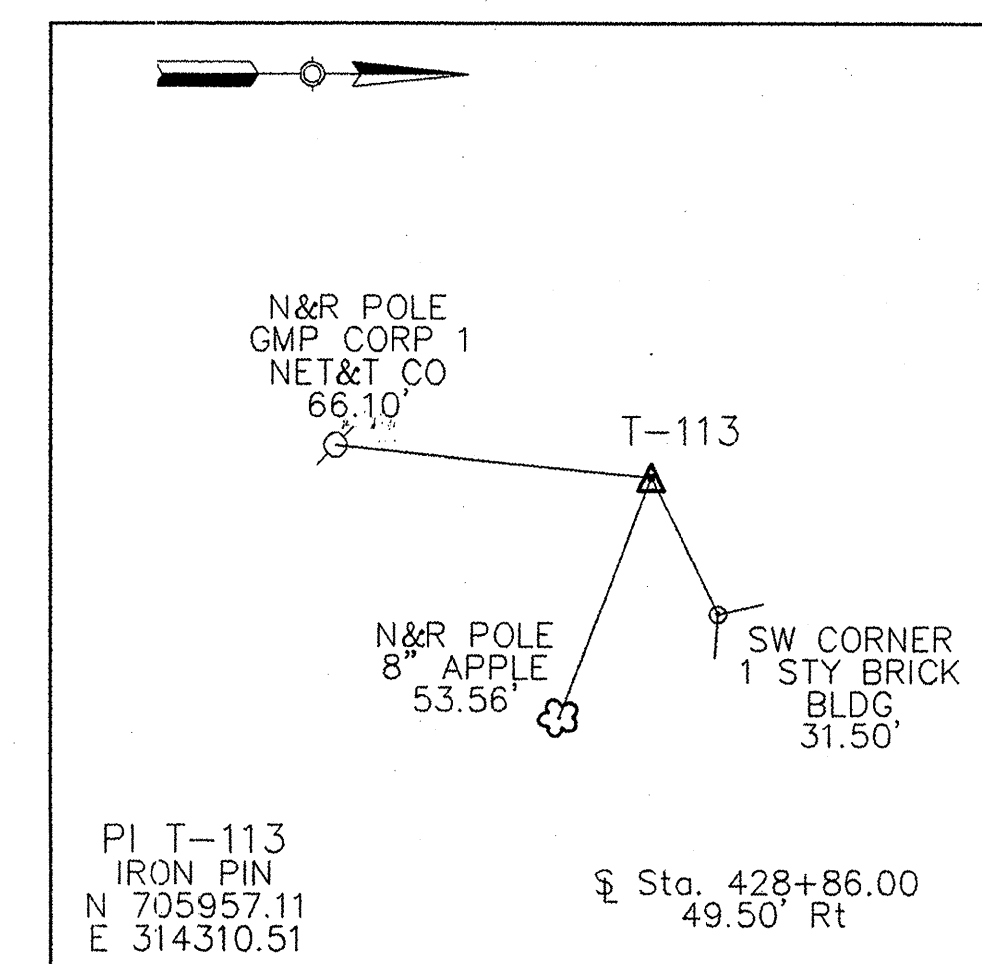


MATCH TO ALIGNMENT DRAWING NO. 1
STA. 397+00

**CURVE NO. C23
BARTLETT BAY ROAD**
 P.I. STA. 401+06.12 BK.=
 STA. 401+05.90 AHD.
 N 703,688.38
 E 313,964.00
 Δ= 12° 31' 48"
 D= 22° 02' 13"
 R= 260.00'
 T= 28.54'
 L= 56.86'
 E= 1.56'
 P.C. STA. 400+77.58
 N 703,686.00
 E 313,992.44
 P.T. STA. 401+34.44
 N 703,684.54
 E 313,935.72



JUGHANDLE H
 P.I. STA. 410+50.06 BK.=
 STA. 410+49.18 AHD.
 N 705,098.73
 E 314,218.92
 Δ= 18° 38' 33"
 D= 18° 47' 08"
 R= 305.00'
 T= 50.06'
 L= 99.24'
 E= 4.08'
 P.C. STA. 410+00.00
 N 705,048.85
 E 314,214.75
 P.T. STA. 410+99.24
 N 705,144.67
 E 314,238.82



NOTE:
 HORIZONTAL DATUM IS NAD 1927
 FROM VERMONT AGENCY OF TRANSPORTATION, VT.
 TRANSVERSE MERCATOR PROJECTION. (1946)
 GRID SCALE FACTOR = 1.000000
 SEA LEVEL FACTOR USED (187.0') = 0.9999911

SHELBURNE - SOUTH BURLINGTON
 SURVEYED BY V.S.C. INC. DATE _____
 DRAWN BY E.A.A. INC. DATE _____
 TRACED BY E.A.A. INC. DATE _____
 PROJECT NH-EGC-019-4(28)
 ALIGNMENT DRAWING NO. 2
 SHEET NO. 13 OF 283

DATUM
 VERTICAL NGVD 1929
 HORIZONTAL NAD 1927

SCALE IN FEET
 0 100 200

4/4/03