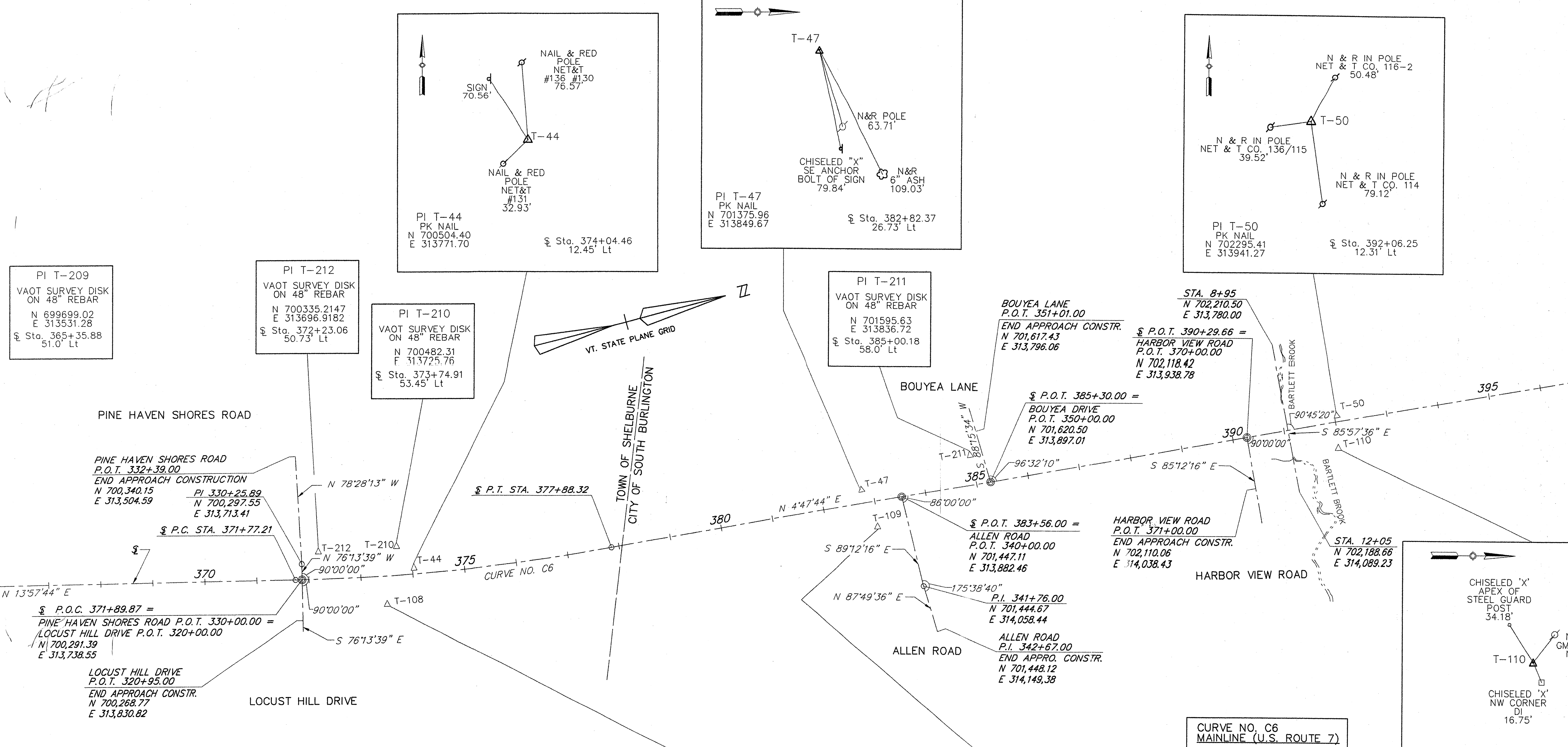


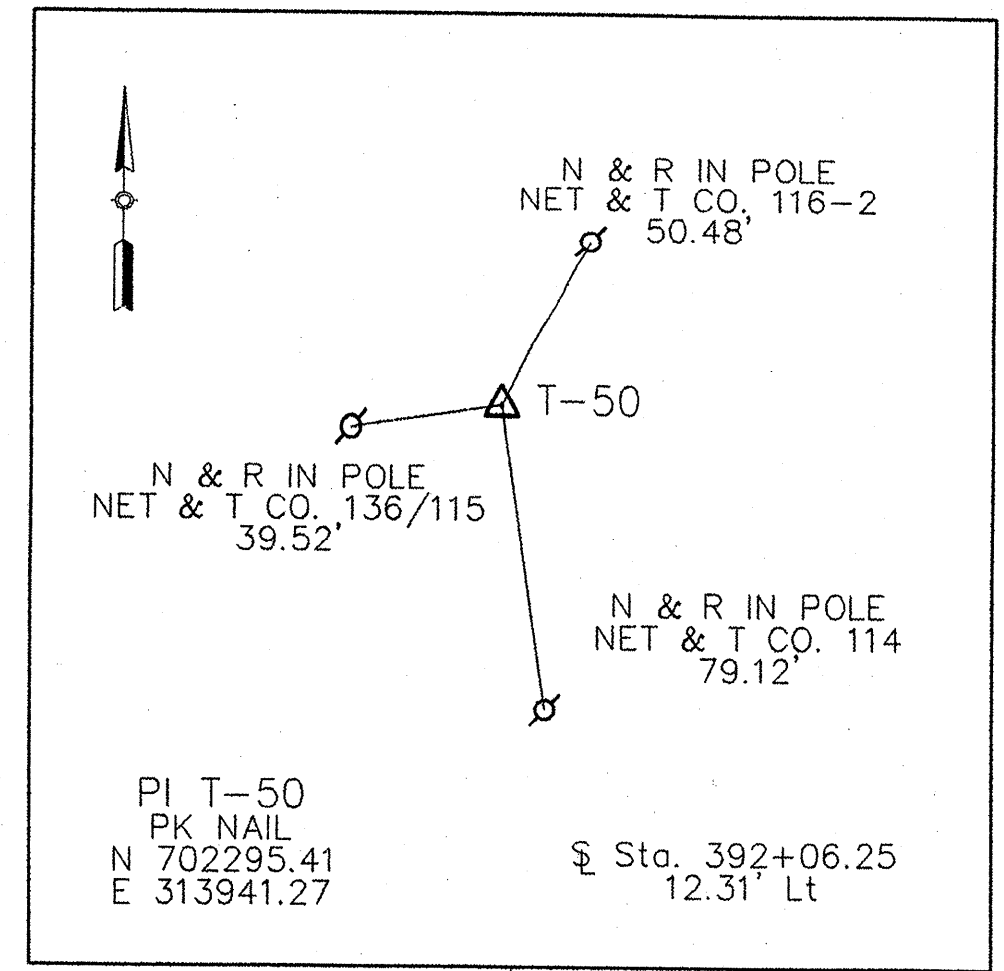
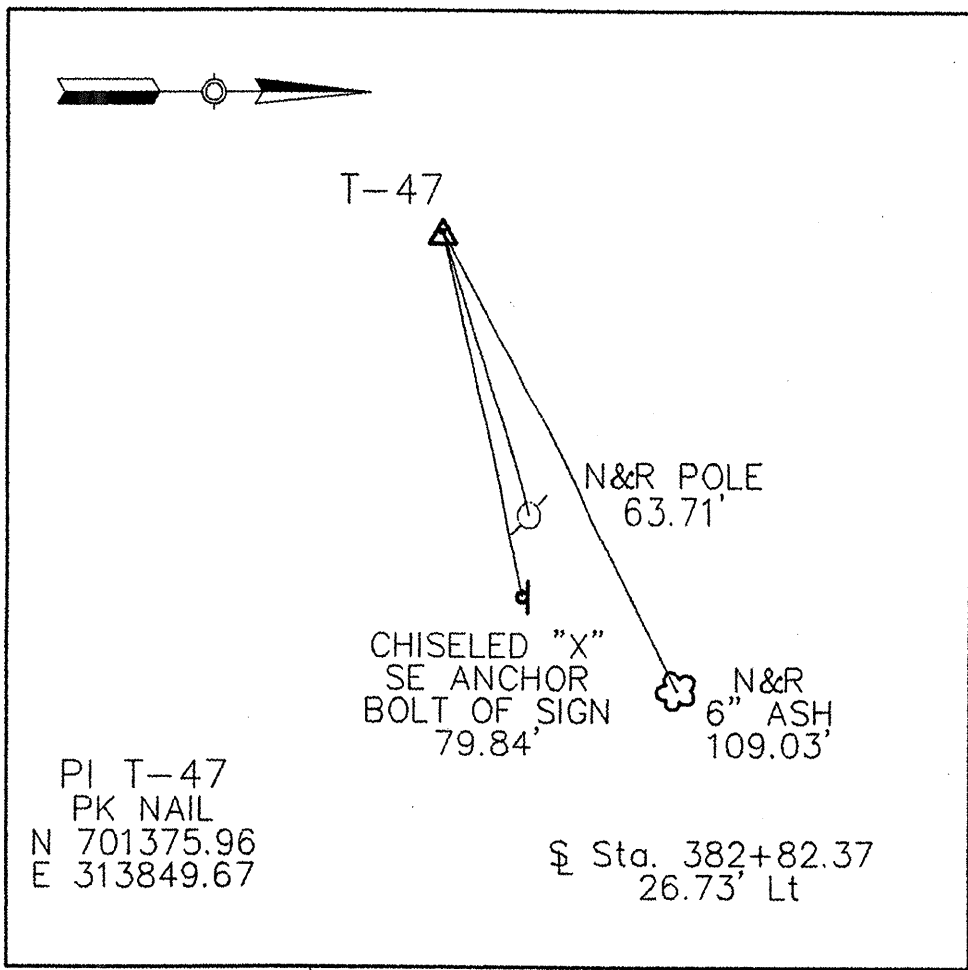
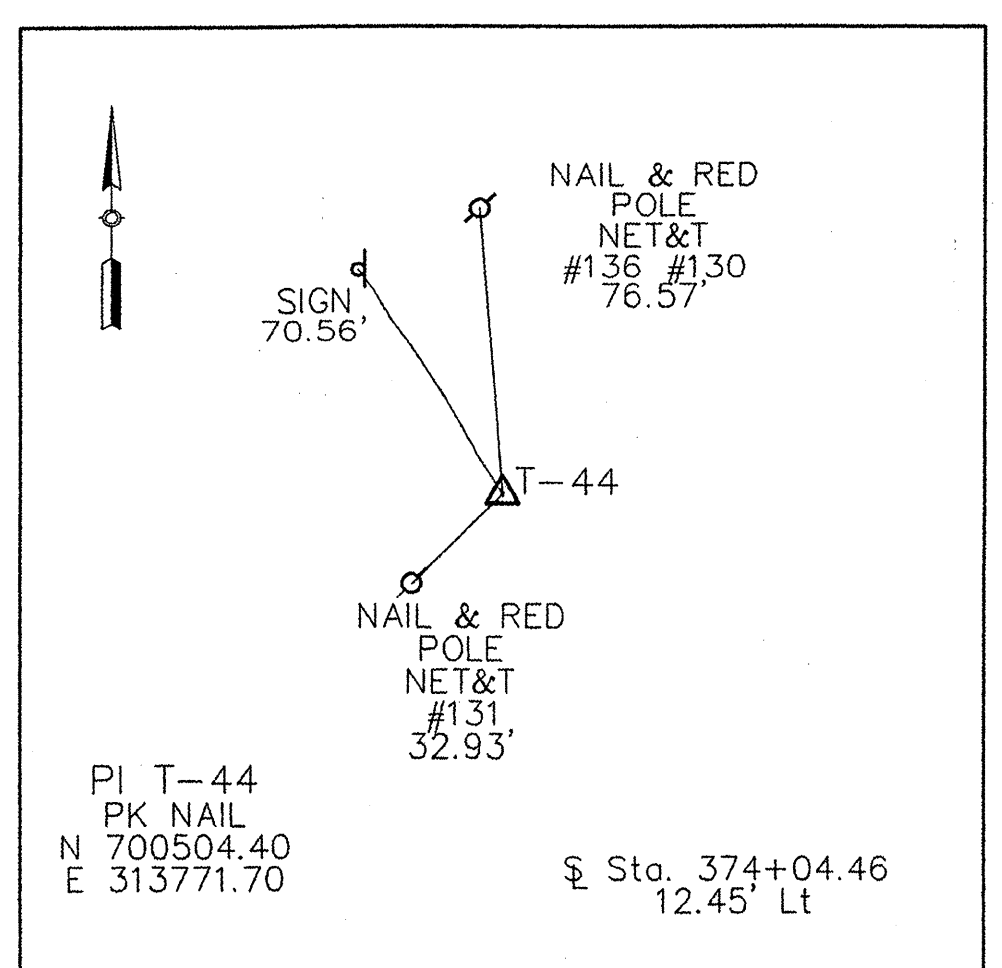
MATCH TO ALIGNMENT DRAWING NO. 2
STA. 397+00



PI T-209
VAOT SURVEY DISK
ON 48" REBAR
N 699699.02
E 313531.28
Sta. 365+35.88
51.0' Lt

PI T-212
VAOT SURVEY DISK
ON 48" REBAR
N 700335.2147
E 313696.9182
Sta. 372+23.06
50.73' Lt

PI T-210
VAOT SURVEY DISK
ON 48" REBAR
N 700482.31
E 313725.76
Sta. 373+74.91
53.45' Lt



PI T-211
VAOT SURVEY DISK
ON 48" REBAR
N 701595.63
E 313836.72
Sta. 385+00.18
58.0' Lt

BOUYEA LANE
P.O.T. 351+01.00
END APPROACH CONSTR.
N 701,617.43
E 313,796.06

Sta. 8+95
N 702,210.50
E 313,780.00
P.O.T. 390+29.66 =
HARBOR VIEW ROAD
P.O.T. 370+00.00
N 702,118.42
E 313,938.78

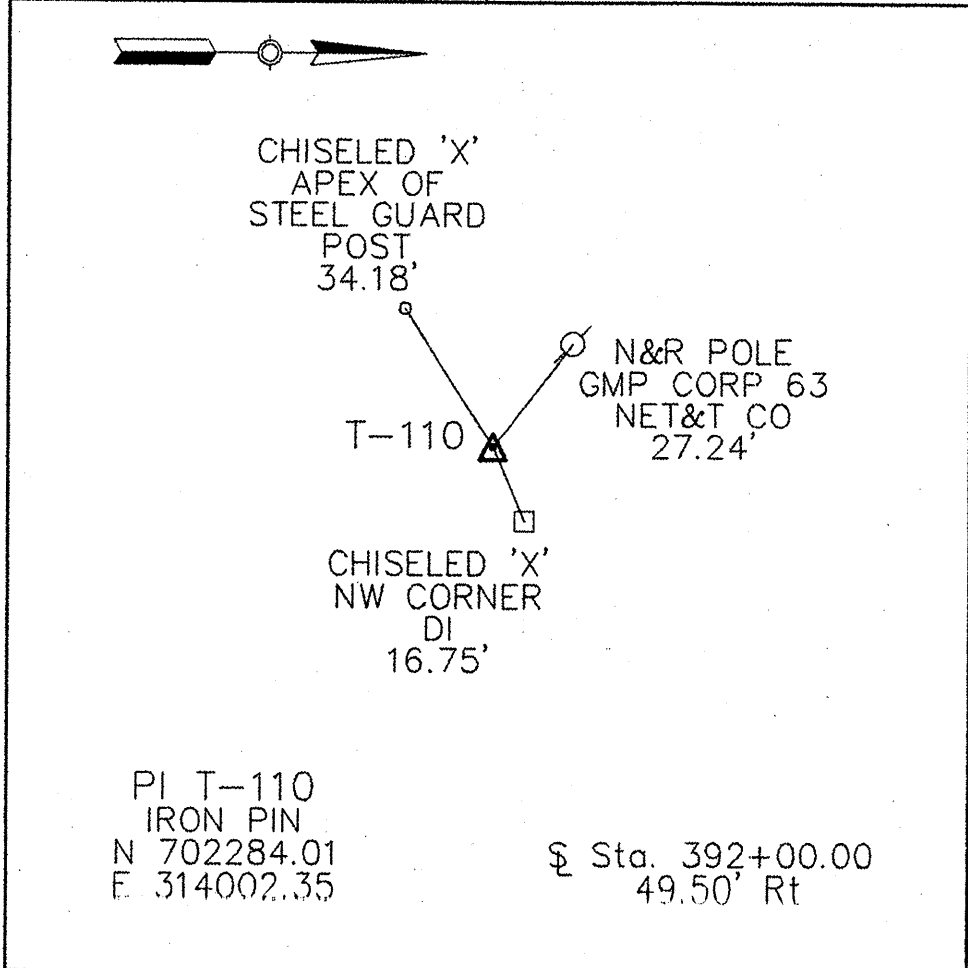
Sta. P.O.T. 385+30.00 =
BOUYEA DRIVE
P.O.T. 350+00.00
N 701,620.50
E 313,897.01

HARBOR VIEW ROAD
P.O.T. 371+00.00
END APPROACH CONSTR.
N 702,110.06
E 314,038.43

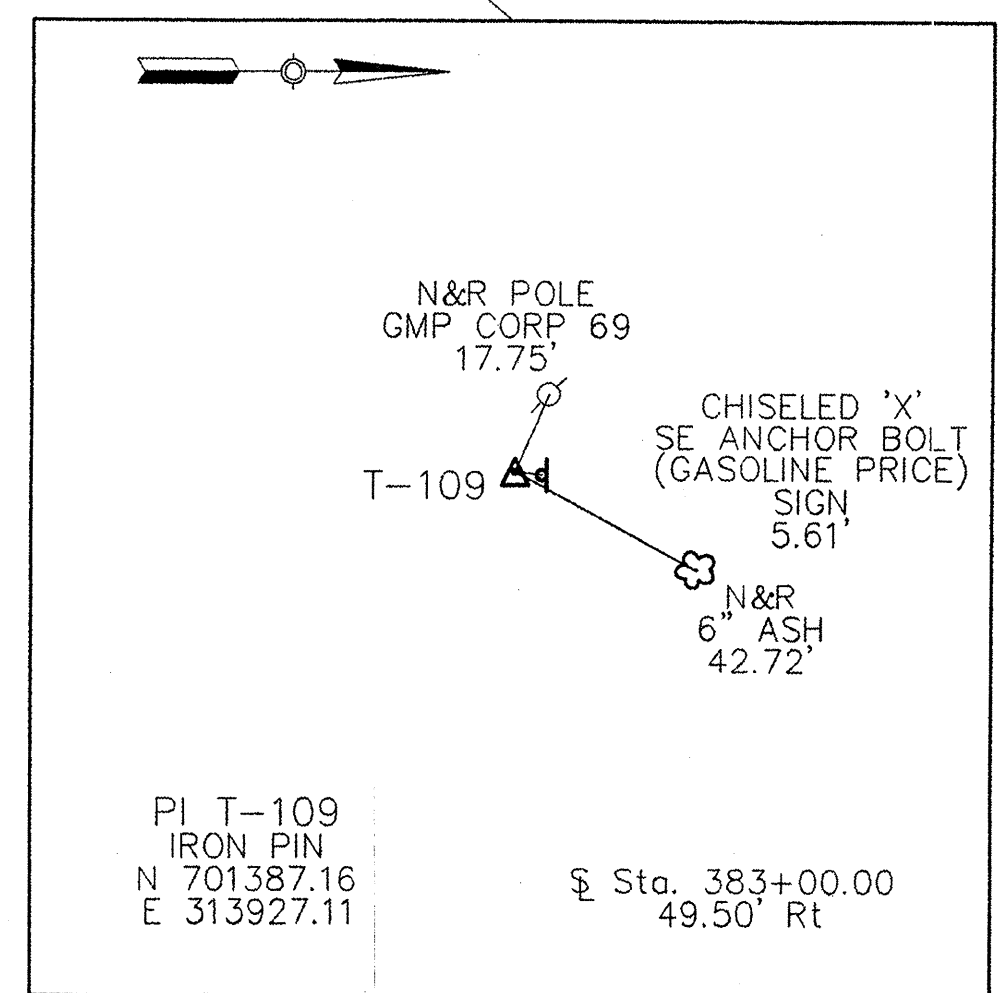
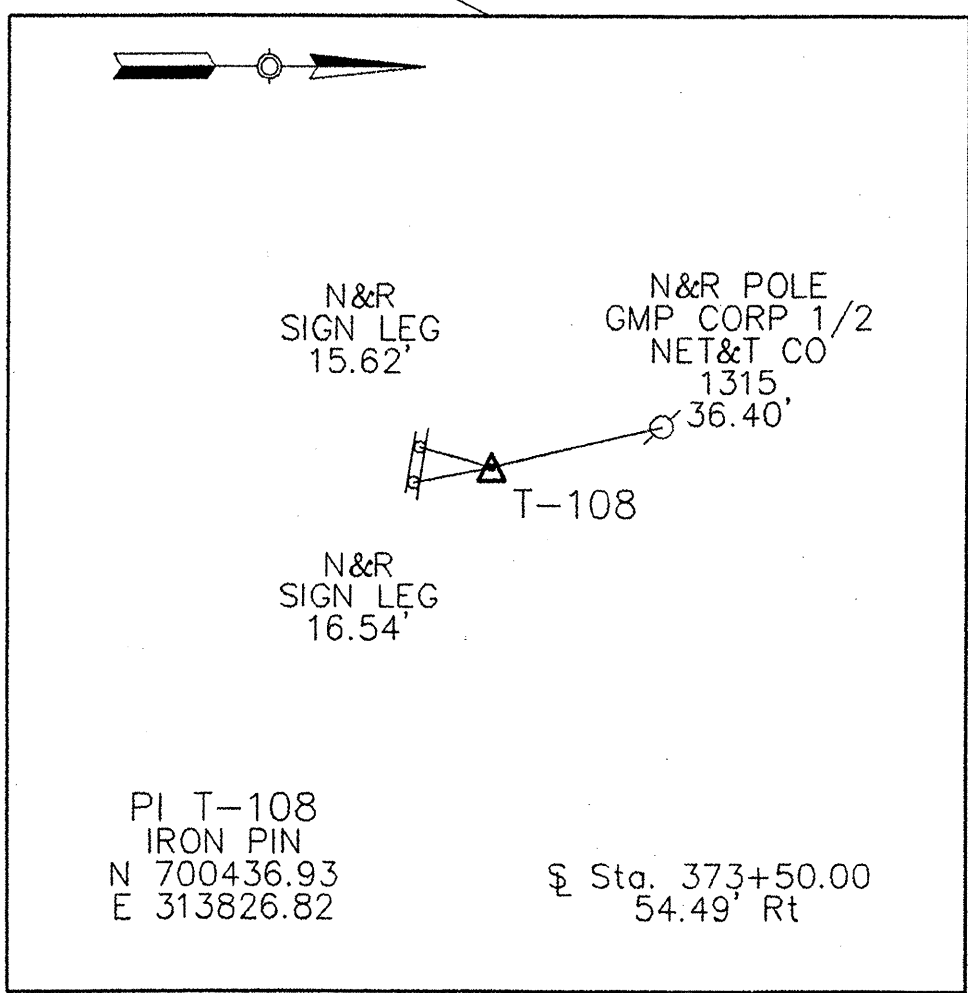
Allen Road
P.O.T. 340+00.00
N 701,447.11
E 313,882.46

Allen Road
P.I. 342+67.00
END APPRO. CONSTR.
N 701,448.12
E 314,149.38

**CURVE NO. C6
MAINLINE (U.S. ROUTE 7)**
P.I. STA. 374+83.42 BK. =
STA. 374+82.10 AHD.
N 700,576.27
E 313,809.40
Δ = 9' 10" 00"
D = 1' 30" 00"
R = 3819.83' (CHORD DEF.)
L = 611.11'
T = 306.22'
E = 12.25'
P.C. STA. 371+77.21
N 700,279.10
E 313,735.52
P.T. STA. 377+88.32
N 700,881.41
E 313,835.00
BANK 0.021' PER FOOT



BM #	STATION	OFFSET	ELEVATION	DESCRIPTION
EAA BM 104	367+06	71' RT.	199.517	IS THE SW CORNER OF THE WESTERLY CONC BASE SUPPORTING A SIGN (KD'S FURNITURE & GIFTS - 1914) LOCATED ON THE EAST SIDE OF U.S. ROUTE 7, APPROXIMATELY 300 FEET NORTH OF THE INTERSECTION OF U.S. ROUTE 7 AND MARTINDALE ROAD.
EAA BM 9	367+74	44' RT.	200.760	IS A CHISELED "X" IN WEST CAP BOLT OF A FIRE HYDRANT LOCATED ON THE EAST SIDE OF U.S. RTE 7, APPROX. 425 FEET SOUTH OF INTERSECTION OF U.S. ROUTE 7 AND PINE HAVEN SHORES.
EAA BM 10	378+55	50' LT.	180.515	IS THE TOP OF THE N.E. ANCHOR BOLT OF A HIGH-ELECTRIC TRANSMISSION LINE POLE LOCATED ON THE WEST SIDE OF U.S. RTE 7, APPROX. 500 FEET SOUTH OF THE INTERSECTION OF U.S. ROUTE 7 AND ALLEN ROAD.
EAA BM 11	381+88	82' RT.	160.178	IS A CHISELED "X" IN THE SOUTH RIM OF A MANHOLE LOCATED ON THE EAST SIDE OF U.S. ROUTE 7, NEAR HOWARD JOHNSON MOTEL PARKING AREA, APPROX. 160 FEET NORTH OF THE INTERSECTION OF U.S. ROUTE 7 AND HARBOR VIEW ROAD.



NOTE:
HORIZONTAL DATUM IS NAD 1927
FROM VERMONT AGENCY OF TRANSPORTATION, VT.
TRANSVERSE MERCATOR PROJECTION. (1946)
GRID SCALE FACTOR = 1.000000
SEA LEVEL FACTOR USED (187.0') = 0.9999911

SHELBURNE - SOUTH BURLINGTON

SURVEYED BY V.S.C. INC. DATE _____
DRAWN BY E.A.A. INC. DATE _____
TRACED BY E.A.A. INC. DATE _____

PROJECT NH-FGC-019-4(28)
ALIGNMENT DRAWING NO. 1
SHEET NO. 12 OF 283

DATUM
VERTICAL NGVD 1929
HORIZONTAL NAD 1927

SCALE IN FEET
4/4/03 0 100 200