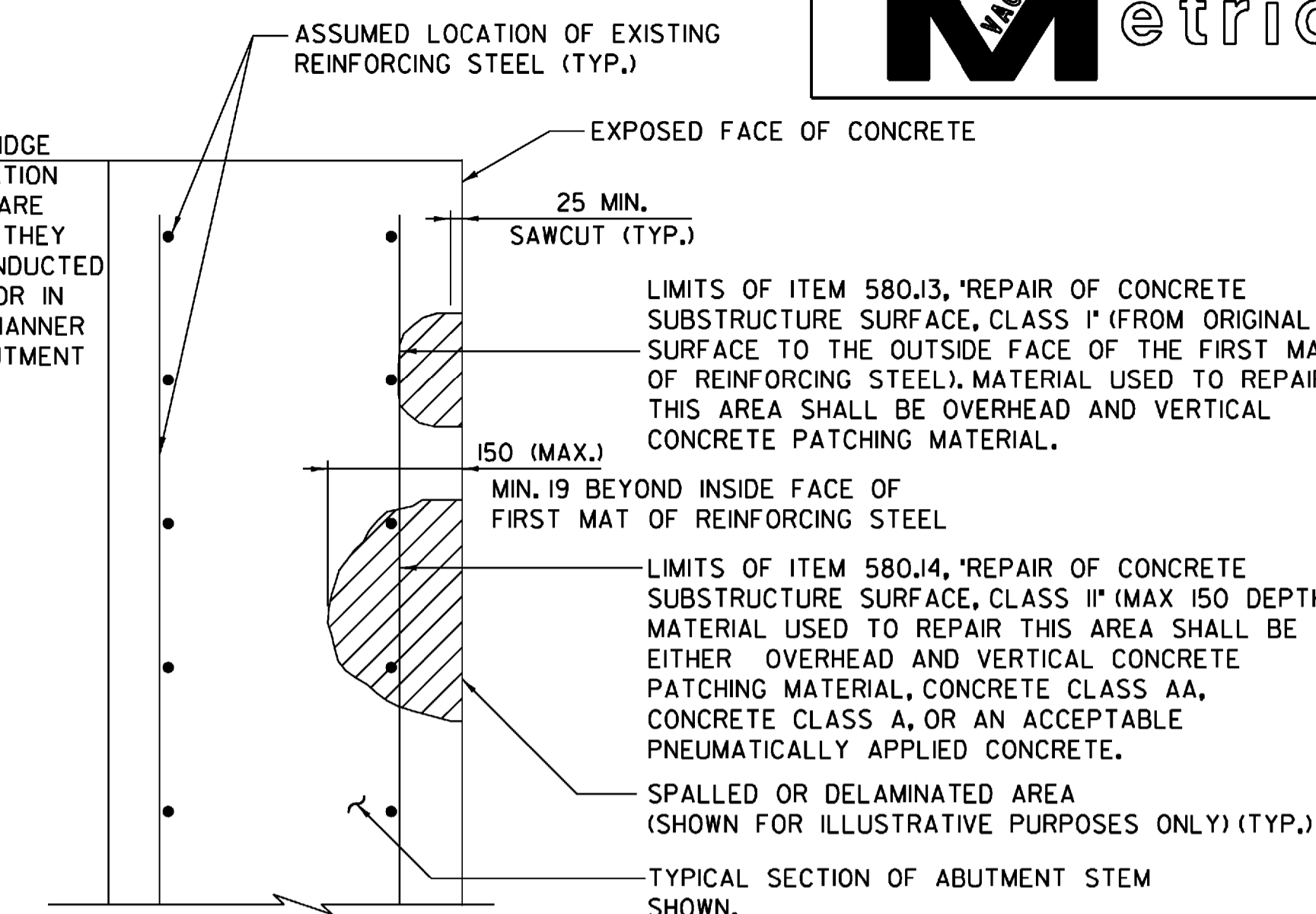
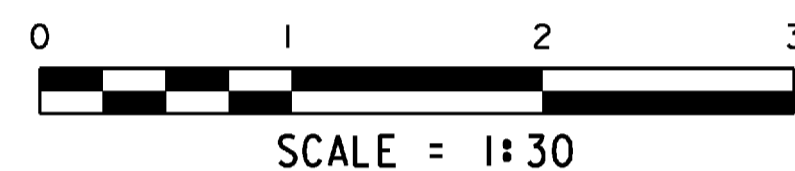


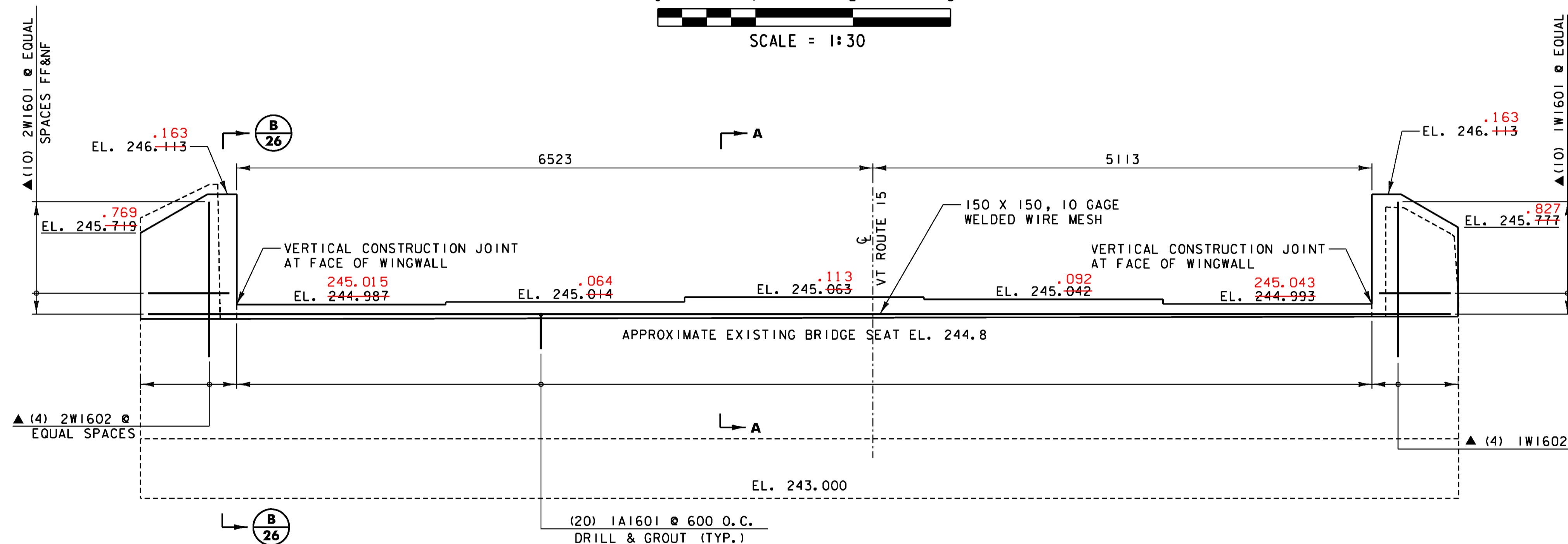
ABUTMENT #1 PLAN



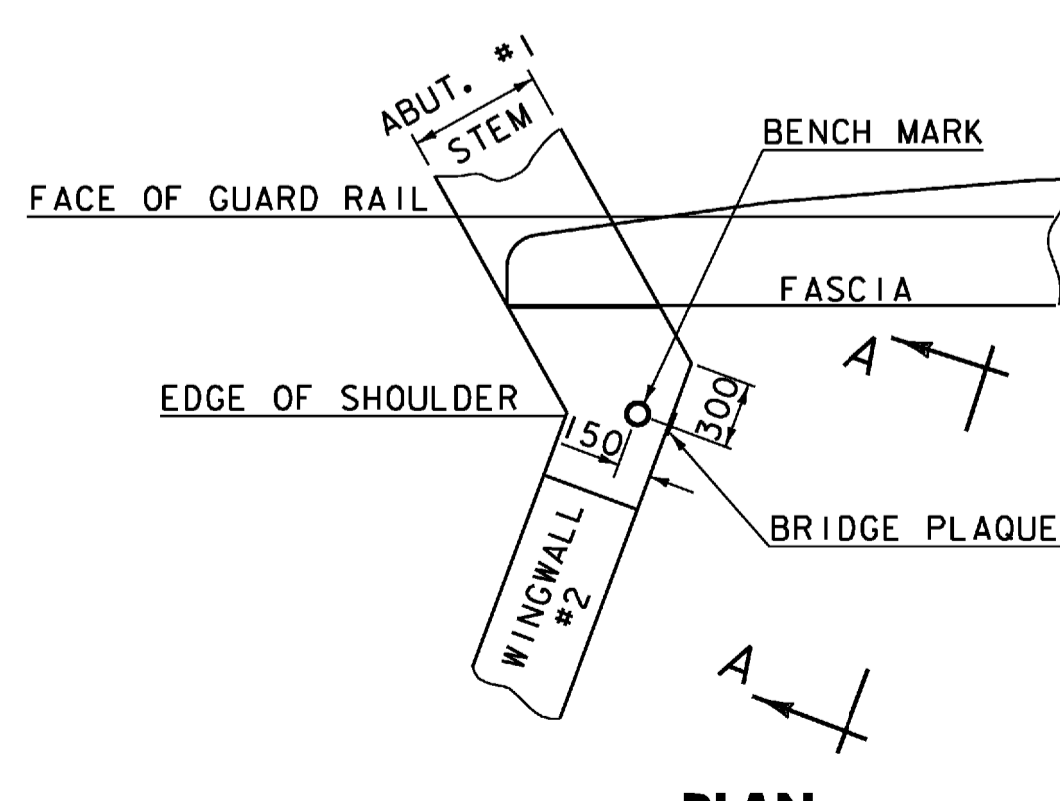
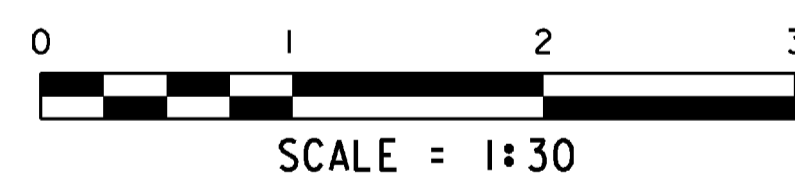
REPAIR OF CONCRETE SUBSTRUCTURE SURFACE CLASS I OR CLASS II

N.T.S. DENOTES LIMITS OF REMOVAL

NOTE:
REPAIRS MADE BEYOND WHAT IS SPECIFIED FOR CLASS II SHALL BE PAID FOR UNDER REPAIR OF CONCRETE SUBSTRUCTURE SURFACE, CLASS III AND SHALL INCLUDE REMOVAL FROM THE FACE OF THE EXISTING CONCRETE SURFACE TO A DEPTH GREATER THAN 150.

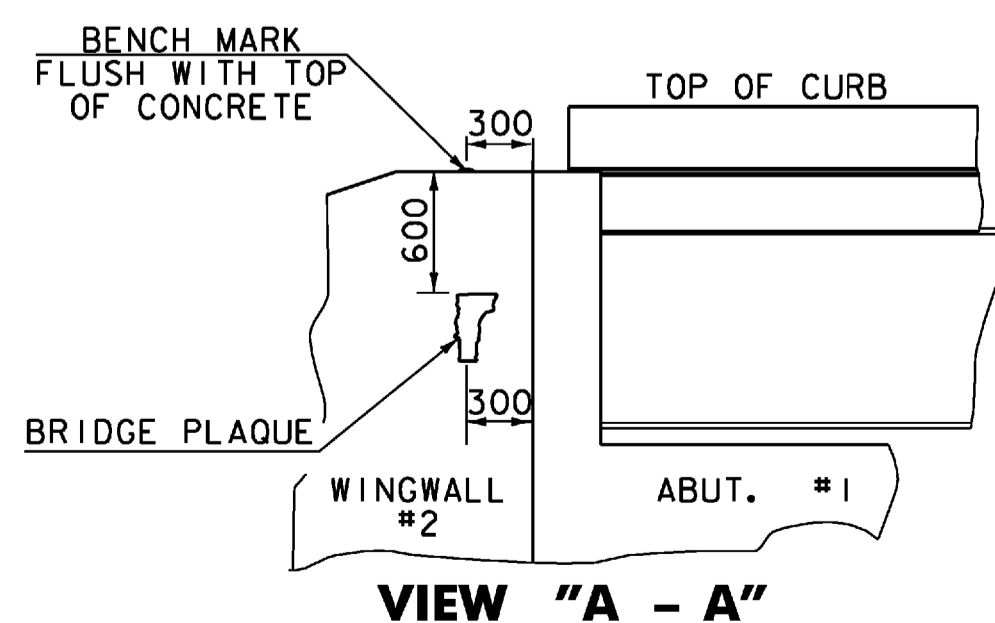


ABUTMENT #1 ELEVATION



PLAN

LOCATE BENCH MARK AND BRIDGE PLAQUE



VIEW "A - A"

THE BENCH MARK AND BRIDGE PLAQUE WILL BE SUPPLIED BY THE AGENCY OF TRANSPORTATION AND SHALL BE INSTALLED BY THE CONTRACTOR AT ABUTMENT #1 ON THE RIGHT SIDE AS SHOWN OR AS DIRECTED BY THE ENGINEER.

NOTES

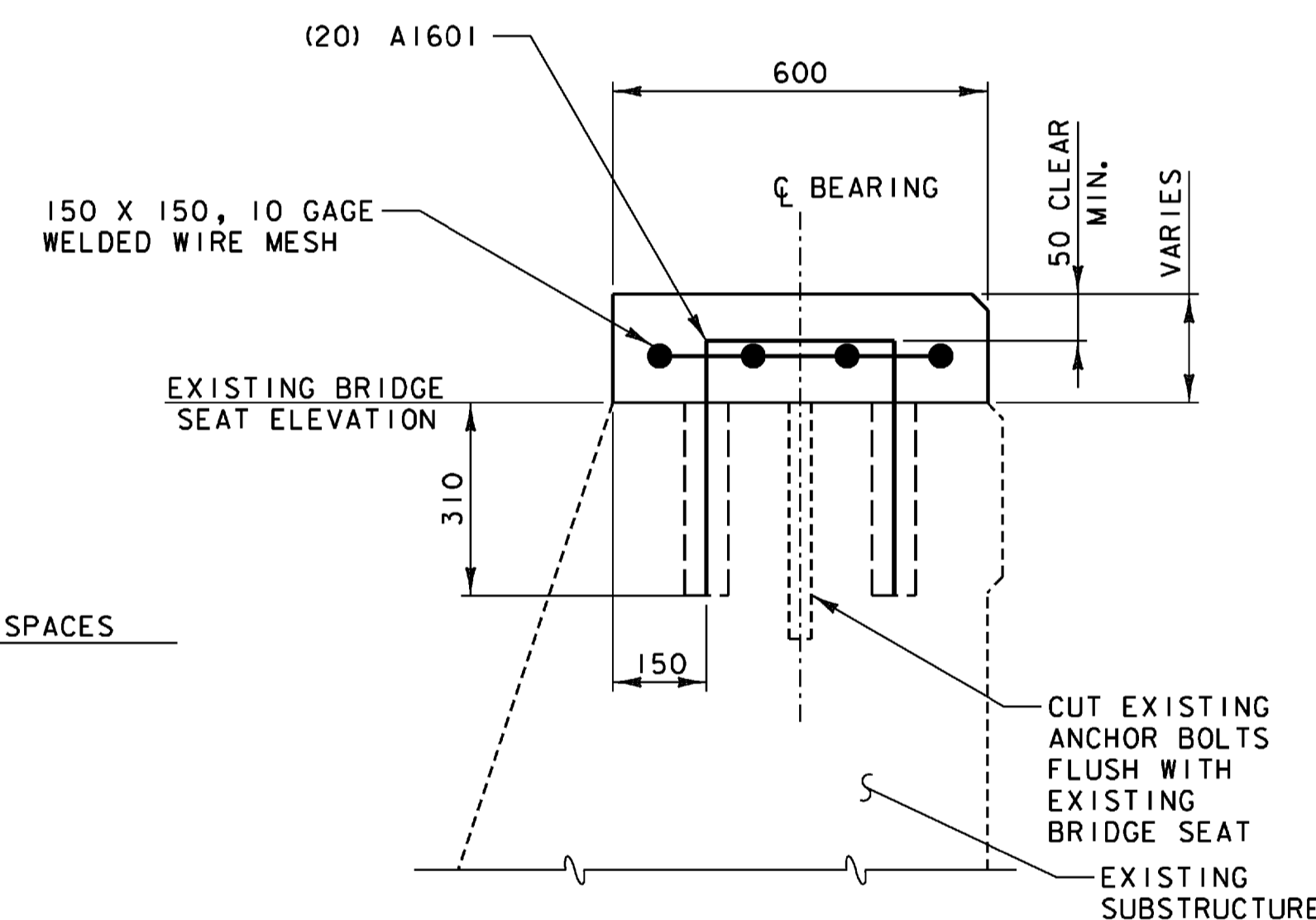
- FOLLOWING REMOVAL OF THE SUPERSTRUCTURE, EACH OF THE FOUR (4) EXISTING WINGWALLS SHALL BE REMOVED TO THE EXISTING BRIDGE SEAT ELEVATION.
- CONCRETE SURFACES SHALL THEN BE INSPECTED AND REPAIRED AS DESCRIBED IN CONSTRUCTION NOTE 1 ON SHEET 18.
- THE CONCRETE FOR THE WINGWALLS SHALL NOT BE PLACED UNTIL THE BEAMS HAVE BEEN SET AND PROFILED AND THE FINISHED GRADE HAS BEEN ESTABLISHED.
- THE WELDED WIRE MESH FOR THE NEW CAPS ON THE ABUTMENTS SHALL BE COATED, GALVANIZED OR EPOXY, AND SHALL BE PAID FOR AS ITEM 507.15, "REINFORCING STEEL".

NOTE:

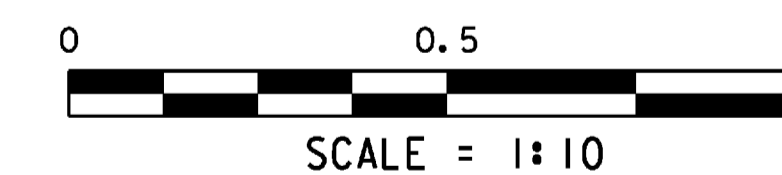
NF = NEAR FACE
FF = FAR FACE
EF = EACH FACE
T&B = TOP AND BOTTOM
▲ = CUT TO FIT IN FIELD
75 CLR. UNLESS OTHERWISE SPECIFIED ON THE PLANS.
MAXIMUM LAP LENGTH NOT DETAILED SHALL BE 660.



engineering planning management development



SECTION A-A



STATE OF VERMONT AGENCY OF TRANSPORTATION

| | | | |
|-------------|----------|------------|----|
| Town Of | HARDWICK | Bridge No. | 67 |
| Highway No. | VT 15 | Log Sta. | |
| | | Surv. Sta. | |

VT 15 OVER COOPER BROOK

ABUTMENT NO. 1 MODIFICATIONS

| | | | |
|------------------|---------------|--------------------------|------------------|
| Designed By | A.P. GUYETTE | Drawn By | R.H. BARNES |
| Checked By | Date | Bridge Design Supervisor | |
| | E. P. DETRICK | J.W. TUCKER | Date 11/08 |
| PROJECT | HARDWICK | PROJECT NO. | BHF 030-2 (18) S |
| I.G.C. Info. | DGN#SPEC# | | |
| Bridge Sheet No. | | Sheet | 25 of 38 |