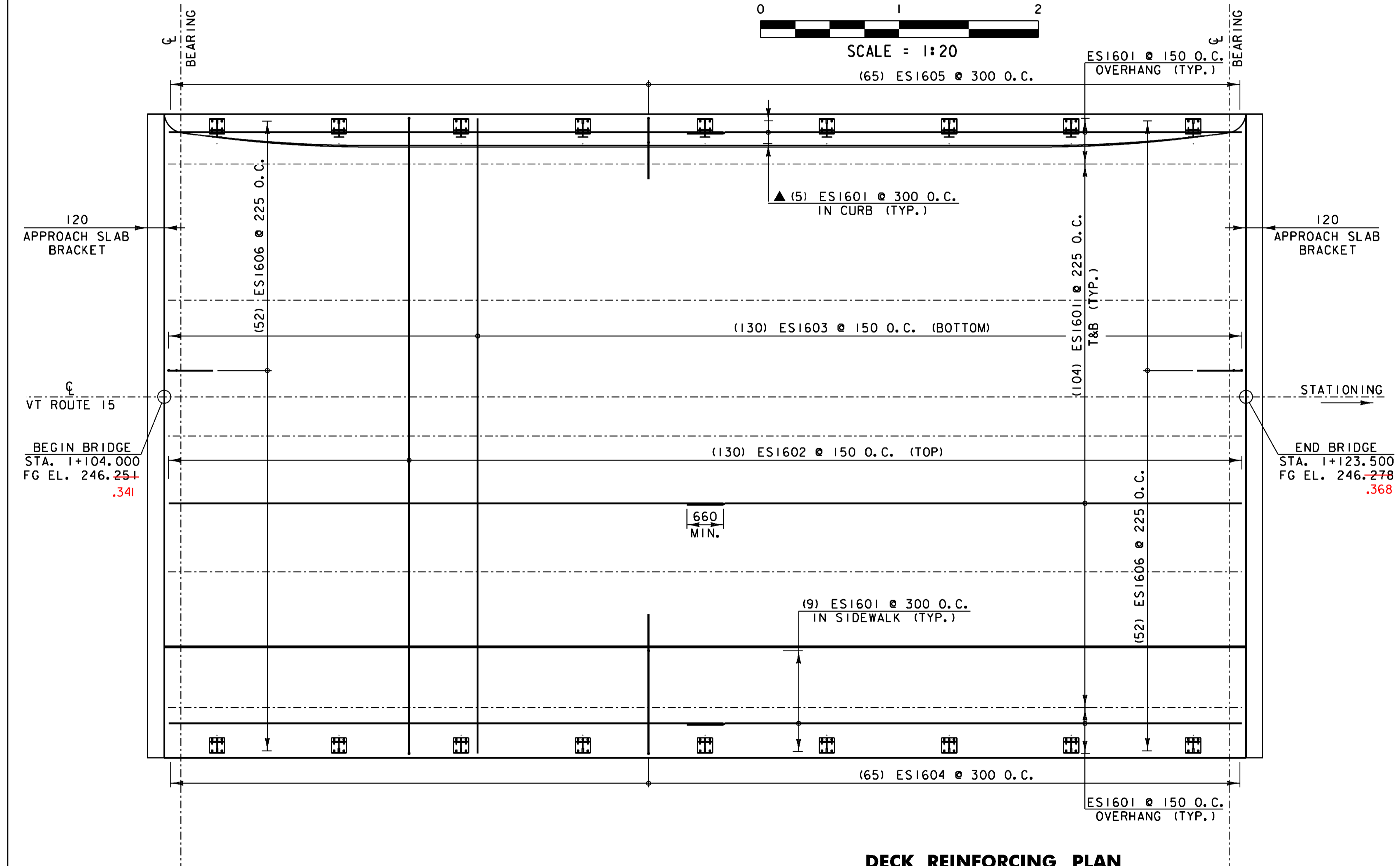
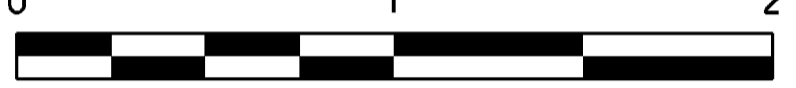


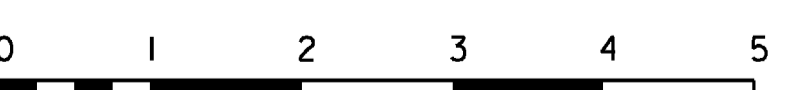
NOTE:

NF = NEAR FACE
FF = FAR FACE
EF = EACH FACE
T&B = TOP AND BOTTOM
▲ = CUT TO FIT IN FIELD 80 CLR. UNLESS OTHERWISE SPECIFIED ON THE PLANS. MAXIMUM LAP LENGTH NOT DETAILED SHALL BE 660.

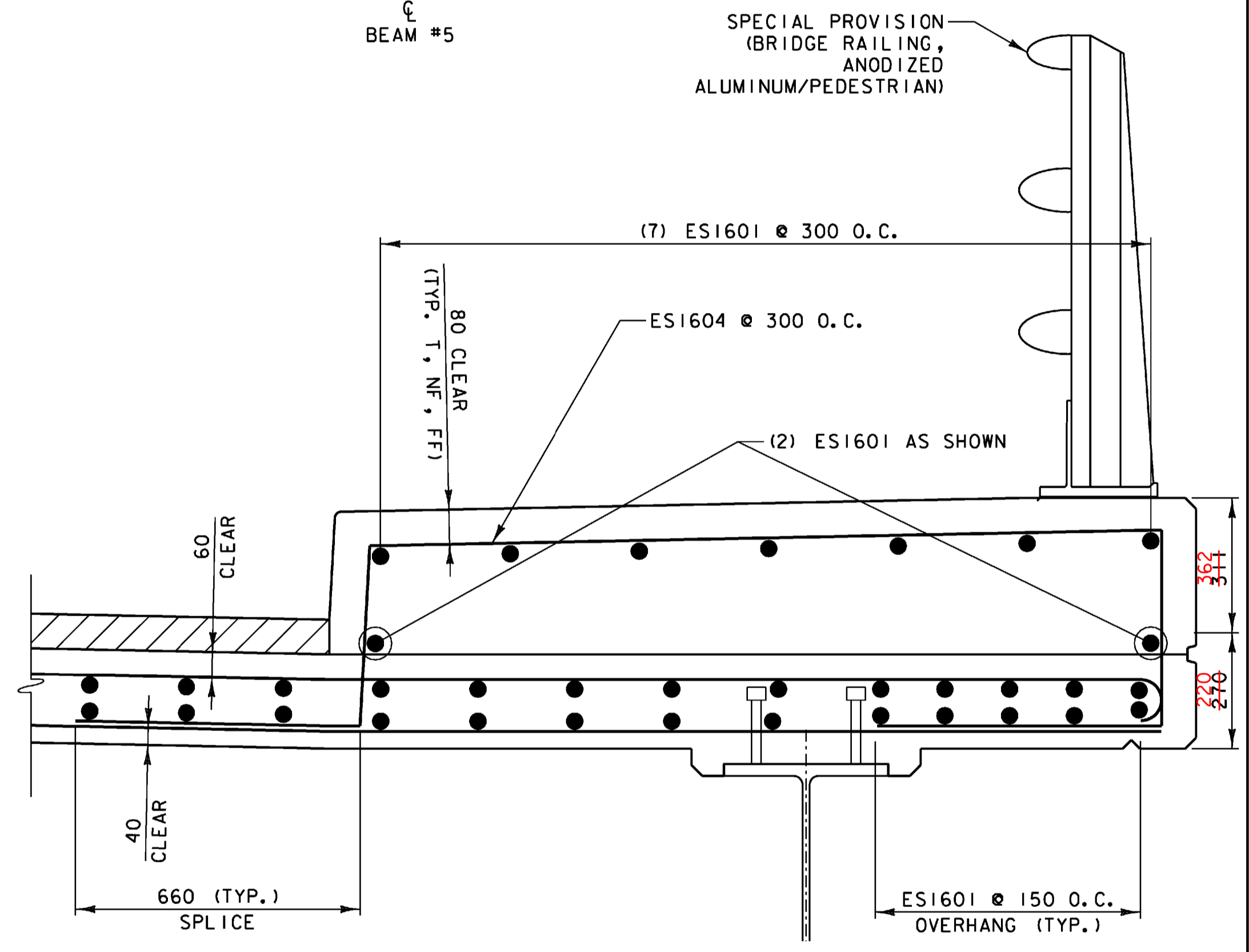
TYPICAL BRIDGE SECTION



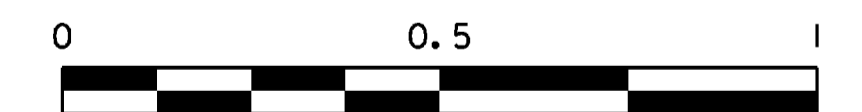
DECK REINFORCING PLAN



- NOTES:**
1. A MAXIMUM OF ONE SPLICE FOR DECK LONGITUDINAL REINFORCING STEEL (TOP AND BOTTOM) SHALL BE ALLOWED.
 2. NO SPLICES FOR DECK TRANSVERSE REINFORCEMENT SHALL BE ALLOWED.
 3. SEE SHEET 21 FOR ADDITIONAL REINFORCING DETAILS OF THE DECK ENDS.
 4. SEE SHEET 27 FOR BRIDGE RAIL POST SPACING.



TYPICAL CURB/SIDEWALK AND EDGE OF DECK REINFORCING



STATE OF VERMONT AGENCY OF TRANSPORTATION

Town Of	HARDWICK	Bridge No.	67
Highway No.	VT 15	Log Sta.	
		Surv. Sta.	

VT 15 OVER COOPER BROOK DECK REINFORCING DETAILS

Designed By	A.P. GUYETTE	Drawn By	P.G. JARVIS
Checked By	Date	Bridge Design Supervisor	
	E. P. DETRICK	J.W. TUCKER	Date 11/08

PROJECT	HARDWICK	PROJECT NO.	BHF 030-2 (18) S
---------	----------	-------------	------------------

I.G.C. Info.	DGN#SPEC#	Bridge Sheet No.	Sheet 20 of 38
--------------	-----------	------------------	----------------

engineering planning management development