

**100mm WHITE LINE**  
 STA. 1+059.500 LT - STA. 1+177.000 RT  
 STA. 1+059.500 RT - STA. 1+177.000 LT

**100mm YELLOW LINE**  
 STA. 1+059.500 - STA. 1+177.000  
 (DOUBLE CENTERLINE)

**SPECIAL PROVISION  
 (ALUMINUM APPROACH RAILING,  
 ANODIZED)**  
 STA. 1+096.852 RT - STA. 1+104.059 RT  
 STA. 1+095.582 LT - STA. 1+104.059 LT  
 STA. 1+123.449 RT - STA. 1+130.655 RT  
 STA. 1+123.449 LT - STA. 1+130.655 LT

**SPECIAL PROVISION  
 (BRIDGE RAILING,  
 ANODIZED 3 RAIL ALUMINUM)**  
 STA. 1+104.059 LT - STA. 1+123.449 LT

**SPECIAL PROVISION  
 (BRIDGE RAILING, ANODIZED  
 ALUMINUM/PEDESTRIAN)**  
 STA. 1+104.059 RT - STA. 1+123.449 RT

**SIDEWALK RAMP (TYPE 1)**  
 STA. 1+098.116 RT - STA. 1+101.116 RT  
 STA. 1+141.138 RT - STA. 1+144.138 RT

**PORTLAND CEMENT CONCRETE SIDEWALK 125 mm**  
 STA. 1+095.468 RT - STA. 1+104.000 RT  
 STA. 1+123.500 RT - STA. 1+146.796 RT

**CAST-IN-PLACE CONCRETE CURB, TYPE B**  
 STA. 1+098.068 RT - STA. 1+104.000 RT  
 STA. 1+123.500 RT - STA. 1+144.138 RT

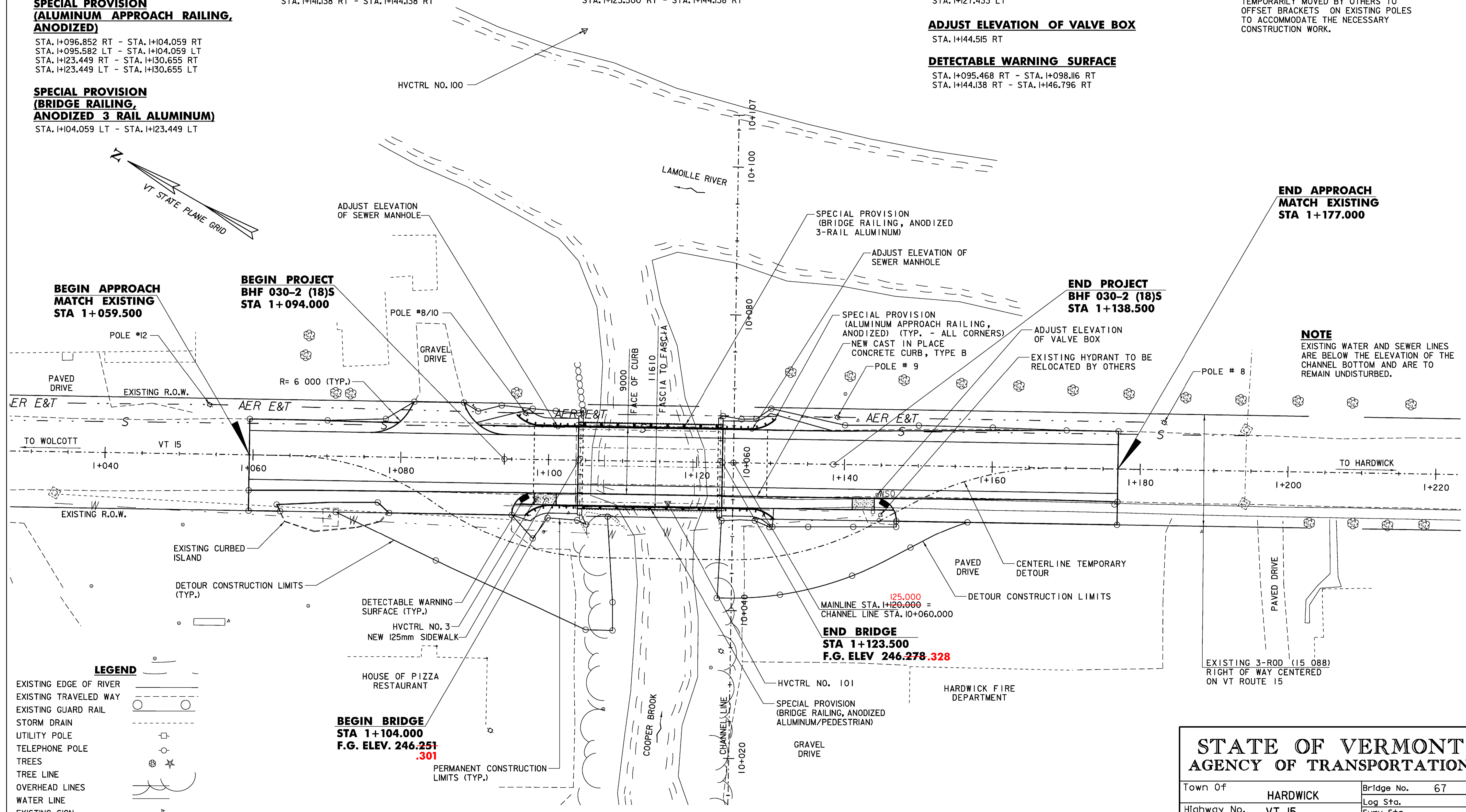
**CONSTRUCT DRIVE & PAVED APRON**  
 STA. 1+059.500 RT - STA. 1+095.114 RT  
 STA. 1+079.652 LT - STA. 1+090.517 LT  
 STA. 1+146.778 RT - STA. 1+177.000 RT

**ADJUST ELEVATION OF SEWER MANHOLE**  
 STA. 1+101.210 LT  
 STA. 1+127.433 LT

**ADJUST ELEVATION OF VALVE BOX**  
 STA. 1+144.515 RT

**DETECTABLE WARNING SURFACE**  
 STA. 1+095.468 RT - STA. 1+098.116 RT  
 STA. 1+144.138 RT - STA. 1+146.796 RT

**NOTE:**  
 EXISTING AERIAL UTILITIES WILL BE TEMPORARILY MOVED BY OTHERS TO OFFSET BRACKETS ON EXISTING POLES TO ACCOMMODATE THE NECESSARY CONSTRUCTION WORK.



**END APPROACH  
 MATCH EXISTING  
 STA 1+177.000**

**END PROJECT  
 BHF 030-2 (18)S  
 STA 1+138.500**

**BEGIN PROJECT  
 BHF 030-2 (18)S  
 STA 1+094.000**

**BEGIN APPROACH  
 MATCH EXISTING  
 STA 1+059.500**

**NOTE**  
 EXISTING WATER AND SEWER LINES ARE BELOW THE ELEVATION OF THE CHANNEL BOTTOM AND ARE TO REMAIN UNDISTURBED.

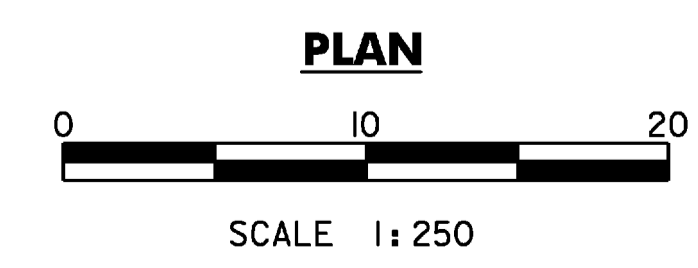
**END BRIDGE  
 STA 1+123.500  
 F.G. ELEV 246.278.328**

**BEGIN BRIDGE  
 STA 1+104.000  
 F.G. ELEV. 246.251.301**

**LEGEND**

EXISTING EDGE OF RIVER	
EXISTING TRAVELED WAY	
EXISTING GUARD RAIL	
STORM DRAIN	
UTILITY POLE	
TELEPHONE POLE	
TREES	
TREE LINE	
OVERHEAD LINES	
WATER LINE	
EXISTING SIGN	
SEWER LINE	
CLEAR ZONE	
EXISTING R.O.W.	
MONITORING WELL	

**EXISTING BRIDGE DATA**  
 SINGLE SPAN STEEL BEAM WITH CONCRETE DECK, SIDEWALK AND GUARDRAIL ON CONCRETE ABUTMENTS.  
 CLEAR WIDTH 9M,  
 SIDEWALK WIDTH 1.5M AND FASCIA TO FASCIA WIDTH 11.9M



**DATUM**

VERTICAL	NAVD 88
HORIZONTAL	NAD 83/92

**DuBois & King**  
 engineering planning management development

STATE OF VERMONT AGENCY OF TRANSPORTATION			
Town Of	HARDWICK	Bridge No.	67
Highway No.	VT 15	Log Sta.	
		Surv. Sta.	
VT 15 OVER COOPER BROOK			
SITE PLAN			
Designed By	A.P. GUYETTE	Drawn By	S.J. BIJOLLE
Checked By	E. P. DETRICK	Bridge Design Supervisor	J.W. TUCKER
	1/09	Date	1/09
PROJECT	HARDWICK	PROJECT NO.	BHF 030-2 (18) S
I.G.C. Info. M:\Projects\95J306\Structures\04-13-09 updates\z95J			
Bridge Sheet No.		Sheet 8 of 38	