



**100mm WHITE LINE**  
 STA. I+059.500 LT - STA. I+177.000 RT  
 STA. I+059.500 RT - STA. I+177.000 LT

**100mm YELLOW LINE**  
 STA. I+059.500 - STA. I+177.000  
 (DOUBLE CENTERLINE)

**ALUMINUM APPROACH RAILING (MOD. - ANODIZED BLACK)**  
 STA. I+096.852 RT - STA. I+104.075 RT  
 STA. I+095.900 LT - STA. I+104.075 LT  
 STA. I+123.425 RT - STA. I+130.566 RT  
 STA. I+123.425 LT - STA. I+130.566 LT

**BRIDGE RAILING - 3 RAIL ALUMINUM (MOD. - ANODIZED BLACK)**  
 STA. I+104.075 LT - STA. I+123.425 LT

**BRIDGE RAILING - ALUMINUM/PEDESTRIAN (MOD. - ANODIZED BLACK)**  
 STA. I+104.075 RT - STA. I+123.425 RT

**SIDEWALK RAMP (TYPE 1)**  
 STA. I+098.116 RT - STA. I+101.116 RT  
 STA. I+141.138 RT - STA. I+144.138 RT

**PORTLAND CEMENT CONCRETE SIDEWALK 125 mm**  
 STA. I+095.468 RT - STA. I+104.000 RT  
 STA. I+123.500 RT - STA. I+146.796 RT

**CAST IN PLACE CONCRETE CURB, TYPE B**  
 STA. I+098.068 RT - STA. I+104.000 RT  
 STA. I+123.500 RT - STA. I+144.138 RT

**CONSTRUCT DRIVE**  
 STA. I+059.500 RT - STA. I+095.114 RT  
 STA. I+079.652 LT - STA. I+090.517 LT  
 STA. I+146.778 RT - STA. I+177.000 RT

**CHANGE ELEVATION OF SEWER MANHOLE**  
 STA. I+101.210 LT  
 STA. I+127.433 LT

**ADJUST ELEVATION OF VALVE BOX**  
 STA. I+144.515 RT

**DETECTABLE WARNING SURFACE**  
 STA. I+095.468 RT - STA. I+098.116 RT  
 STA. I+144.138 RT - STA. I+146.796 RT

**NOTE:**  
 EXISTING AERIAL UTILITIES WILL BE TEMPORARILY MOVED BY OTHERS TO ACCOMMODATE THE NECESSARY CONSTRUCTION WORK.

**BEGIN R.O.W. PROJECT**  
**BHF 030-2 (18) S**  
**STA. 1+063.25**  
**7.54M (24.75') RT.**  
**N/F KNOWLTON, JEFFERY & MICHELLE**

**END R.O.W. PROJECT**  
**BHF 030-2 (18) S**  
**STA. 1+177.88**  
**7.54M (24.75') LT.**

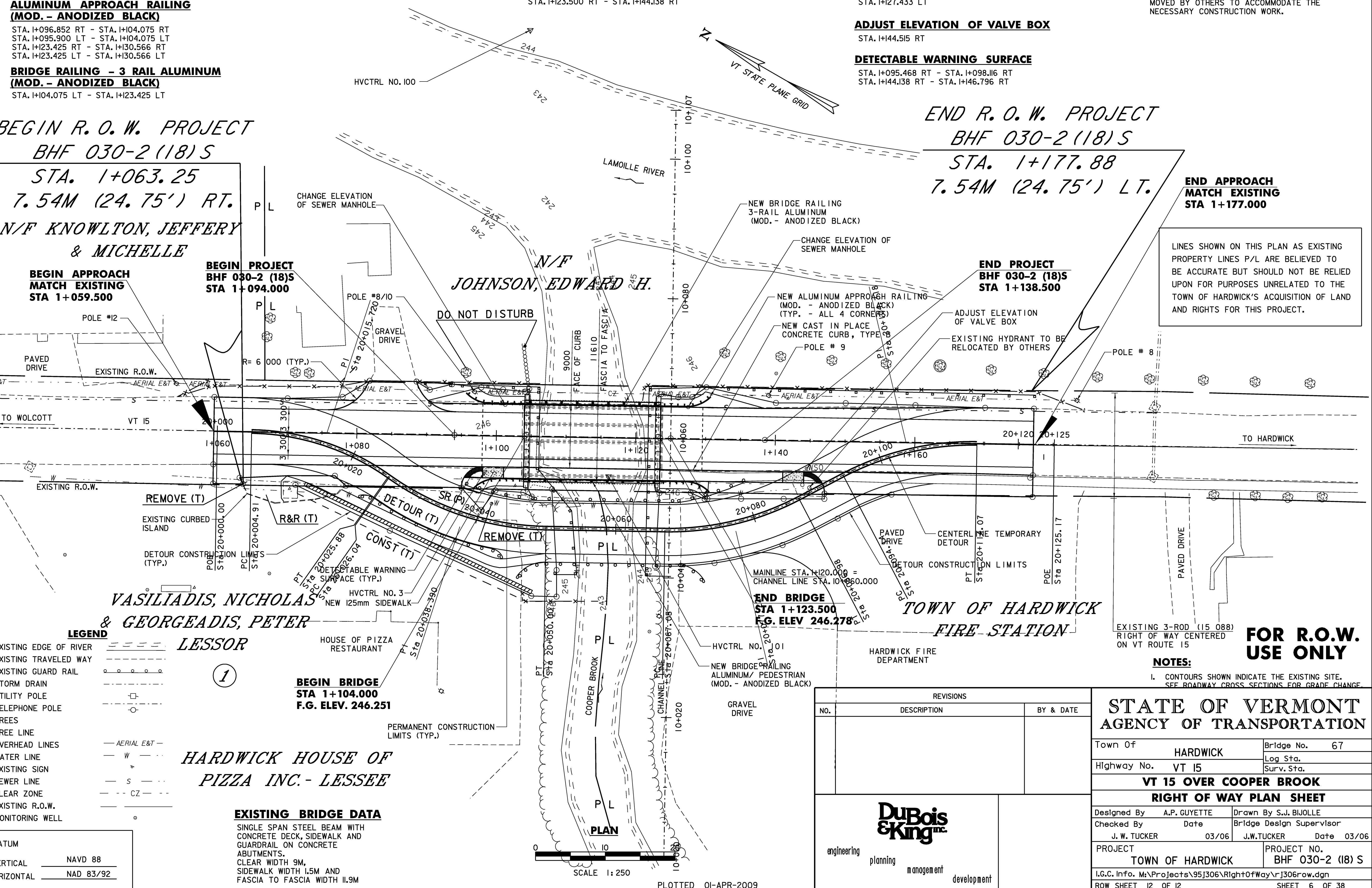
**END APPROACH MATCH EXISTING STA 1+177.000**

LINES SHOWN ON THIS PLAN AS EXISTING PROPERTY LINES P/L ARE BELIEVED TO BE ACCURATE BUT SHOULD NOT BE RELIED UPON FOR PURPOSES UNRELATED TO THE TOWN OF HARDWICK'S ACQUISITION OF LAND AND RIGHTS FOR THIS PROJECT.

**BEGIN APPROACH MATCH EXISTING STA 1+059.500**

**BEGIN PROJECT BHF 030-2 (18) S STA 1+094.000**

**END PROJECT BHF 030-2 (18) S STA 1+138.500**



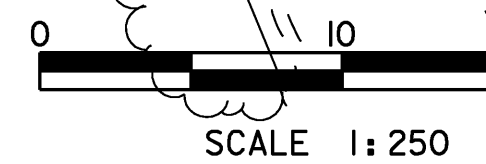
**LEGEND**

EXISTING EDGE OF RIVER	---
EXISTING TRAVELED WAY	---
EXISTING GUARD RAIL	---
STORM DRAIN	---
UTILITY POLE	---
TELEPHONE POLE	---
TREES	---
TREE LINE	---
OVERHEAD LINES	---
WATER LINE	---
EXISTING SIGN	---
SEWER LINE	---
CLEAR ZONE	---
EXISTING R.O.W.	---
MONITORING WELL	---

1

**HARDWICK HOUSE OF PIZZA INC. - LESSEE**

**EXISTING BRIDGE DATA**  
 SINGLE SPAN STEEL BEAM WITH CONCRETE DECK, SIDEWALK AND GUARDRAIL ON CONCRETE ABUTMENTS.  
 CLEAR WIDTH 9M,  
 SIDEWALK WIDTH 1.5M AND FASCIA TO FASCIA WIDTH 11.9M



PLOTTED 01-APR-2009

REVISIONS		
NO.	DESCRIPTION	BY & DATE



**STATE OF VERMONT AGENCY OF TRANSPORTATION**

Town Of	HARDWICK	Bridge No.	67
Highway No.	VT 15	Log Sta.	
		Surv. Sta.	
<b>VT 15 OVER COOPER BROOK</b>			
<b>RIGHT OF WAY PLAN SHEET</b>			
Designed By	A.P. GUYETTE	Drawn By	S.J. BIJOLLE
Checked By	Date	Bridge Design Supervisor	Date
J. W. TUCKER	03/06	J. W. TUCKER	Date 03/06
PROJECT	TOWN OF HARDWICK	PROJECT NO.	BHF 030-2 (18) S
I.G.C. Info.	M:\Projects\95\306\RightOfWay\1306Row.dgn		
ROW SHEET	12 OF 12	SHEET	6 OF 38

**FOR R.O.W. USE ONLY**

**NOTES:**  
 1. CONTOURS SHOWN INDICATE THE EXISTING SITE. SEE ROADWAY CROSS SECTIONS FOR GRADE CHANGE