

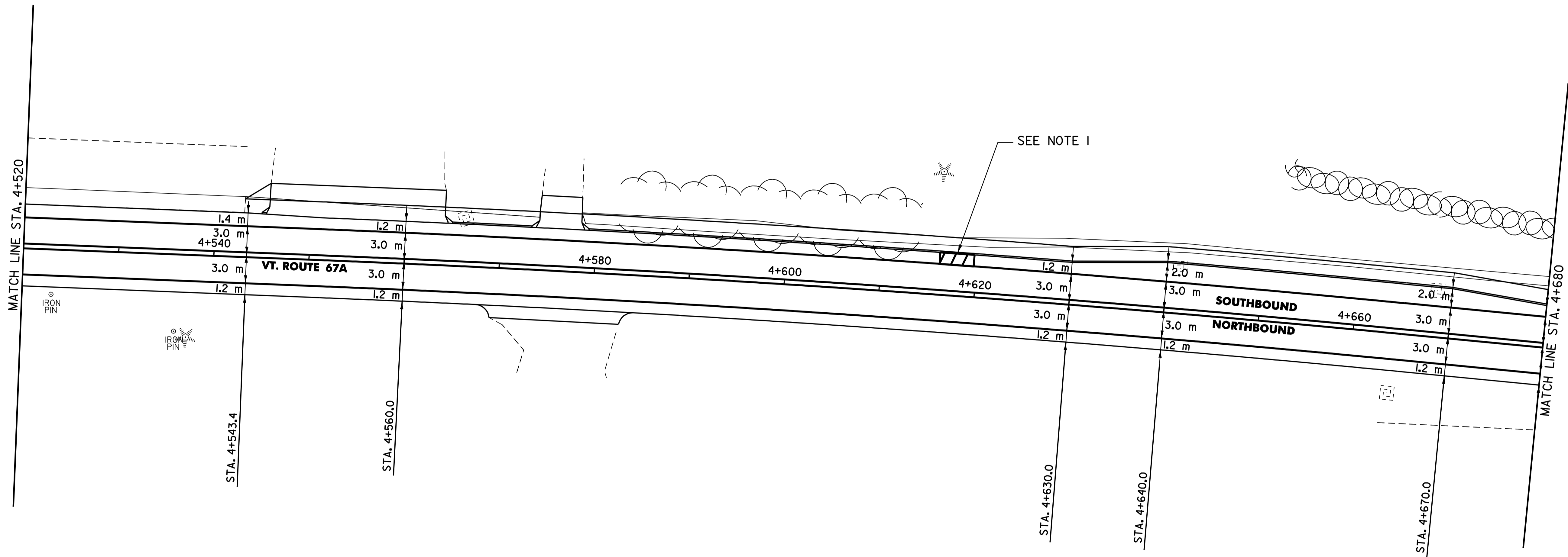
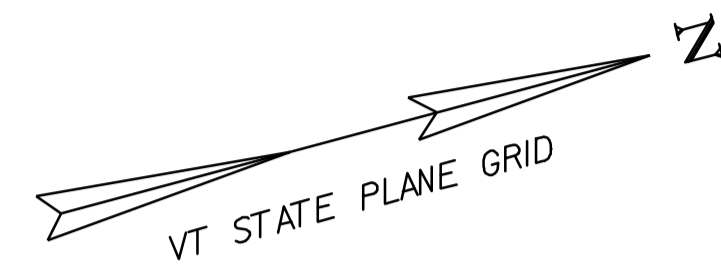
646.40 DURABLE 100 mm WHITE LINE (THERMOPLASTIC)  
 (ALL LINES WILL INCLUDE EDGE LINE BREAKS AND RADIUS FOR TOWN HIGHWAYS)  
 VT. ROUTE 67A:  
 STA. 4+520.0 - STA. 4+680.0 LT & RT

646.41 DURABLE 100 mm YELLOW LINE (THERMOPLASTIC)  
 (ALL LINES WILL INCLUDE C/L BREAKS FOR TOWN HIGHWAYS) S=SOLID, D=DASHED  
 VT. ROUTE 67A:  
 STA. 4+520.0 - STA. 4+680.0 LT CL RT  
 S - S

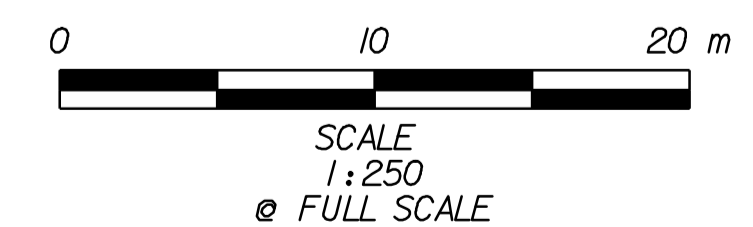
646.42 DURABLE 200 mm WHITE LINE (THERMOPLASTIC)  
 VT. ROUTE 67A:  
 STA. 4+616.2 - STA. 4+619.8 LT, SHOULDER HATCHING (11.0 m)

646.60 TEMPORARY 100 mm WHITE LINE (PAINT)  
 (ALL LINES WILL INCLUDE EDGE LINE BREAKS AND RADIUS FOR TOWN HIGHWAYS)  
 VT. ROUTE 67A:  
 STA. 4+520.0 - STA. 4+680.0 LT & RT

646.61 TEMPORARY 100 mm YELLOW LINE (PAINT)  
 (ALL LINES WILL INCLUDE C/L BREAKS FOR TOWN HIGHWAYS) S=SOLID, D=DASHED  
 VT. ROUTE 67A:  
 STA. 4+520.0 - STA. 4+680.0 LT CL RT  
 S - S



NOTE:  
 I. SEE SHEET 114 FOR FIRE HYDRANT PAVEMENT MARKING DETAIL.



DATUM	
VERTICAL	N/A
HORIZONTAL	NAD83 (1996)

<b>SIGNING &amp; STRIPING PLAN SHEET #8</b>	SURVEYED BY	L.R.S.C.	DATE	4/03
	DRAWN BY	C.A.K.	DATE	3/06
	SQUAD LEADER	D.E.G.		
	DESIGN FILE NO.	/pave/95d104/pd104.dgn		
	IPARM FILE	pd104ssp08.1	DATE PLOTTED	20-AUG-2010 12:
PROJ. NAME	NORTH BENNINGTON			
PROJ. NO.	STP 9646(1)S			
SHEET 104 OF 151	SHEETS			