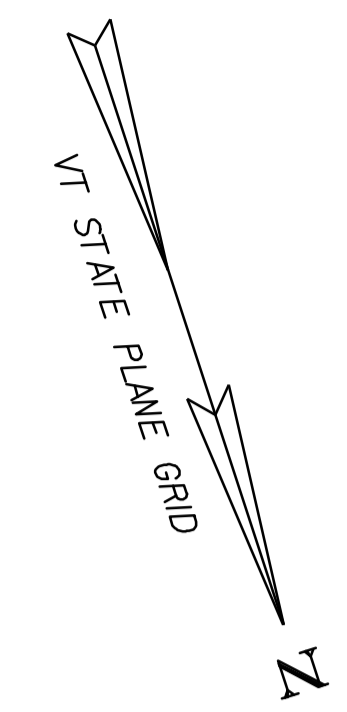


675.50 REMOVING SIGNS
AS SHOWN - 17

675.60 ERECTING SALVAGED SIGNS
AS SHOWN - 2



646.40 DURABLE 100 mm WHITE LINE (THERMOPLASTIC)
(ALL LINES WILL INCLUDE EDGE LINE BREAKS AND RADIUS FOR TOWN HIGHWAYS)

VT. ROUTE 67A:
STA. 3+434.340 - STA. 3+560.0 LT & RT

RIVER ROAD:
STA. RI+011.0 - STA. RI+067.0 LT

HILLSIDE STREET:
STA. HI+005.0 - STA. HI+023.0 RT

646.60 TEMPORARY 100 mm WHITE LINE (PAINT)
(ALL LINES WILL INCLUDE EDGE LINE BREAKS AND RADIUS FOR TOWN HIGHWAYS)

VT. ROUTE 67A:
STA. 3+434.340 - STA. 3+560.0 LT & RT

RIVER ROAD:
STA. RI+011.0 - STA. RI+067.0 LT

HILLSIDE STREET:
STA. HI+005.0 - STA. HI+023.0 RT

646.41 DURABLE 100 mm YELLOW LINE (THERMOPLASTIC)
(ALL LINES WILL INCLUDE C/L BREAKS FOR TOWN HIGHWAYS) S=SOLID, D=DASHED

VT. ROUTE 67A:
STA. 3+434.340 - STA. 3+560.0 LT S - RT S

RIVER ROAD:
STA. RI+011.0 - STA. RI+070.0 S - S

HILLSIDE STREET:
STA. HI+009.0 - STA. HI+070.0 S - S

646.61 TEMPORARY 100 mm YELLOW LINE (PAINT)
(ALL LINES WILL INCLUDE C/L BREAKS FOR TOWN HIGHWAYS) S=SOLID, D=DASHED

VT. ROUTE 67A:
STA. 3+434.340 - STA. 3+560.0 LT S - RT S

RIVER ROAD:
STA. RI+011.0 - STA. RI+070.0 S - S

HILLSIDE STREET:
STA. HI+009.0 - STA. HI+070.0 S - S

646.42 DURABLE 200 mm WHITE LINE (THERMOPLASTIC)

RIVER ROAD:
STA. RI+001.8 - STA. RI+018.3 HATCHED SHOULDER RT (40.0 m)

646.46 DURABLE 600 mm STOP BAR (THERMOPLASTIC)

RIVER ROAD:
STA. RI+010.7 LT

HILLSIDE STREET:
STA. HI+008.7 LT

646.50 DURABLE LETTER OR SYMBOL (THERMOPLASTIC)

RIVER ROAD:
STA. RI+013.5 LT, "S,T,O,P" (4 EA)

HILLSIDE STREET:
STA. HI+011.5 LT, "S,T,O,P" (4 EA)

646.51 DURABLE CROSSWALK W/DIAGONAL LINES (MOD.) (THERMOPLASTIC)

VT. ROUTE 67A:
STA. 3+467.8

RIVER ROAD:
STA. RI+007.9

646.66 TEMPORARY 600 mm STOP BAR (PAINT)

RIVER ROAD:
STA. RI+010.7 LT

HILLSIDE STREET:
STA. HI+008.7 LT

DATUM

VERTICAL	N/A
HORIZONTAL	NAD83 (1996)

646.51 TEMPORARY LETTER OR SYMBOL (PAINT)

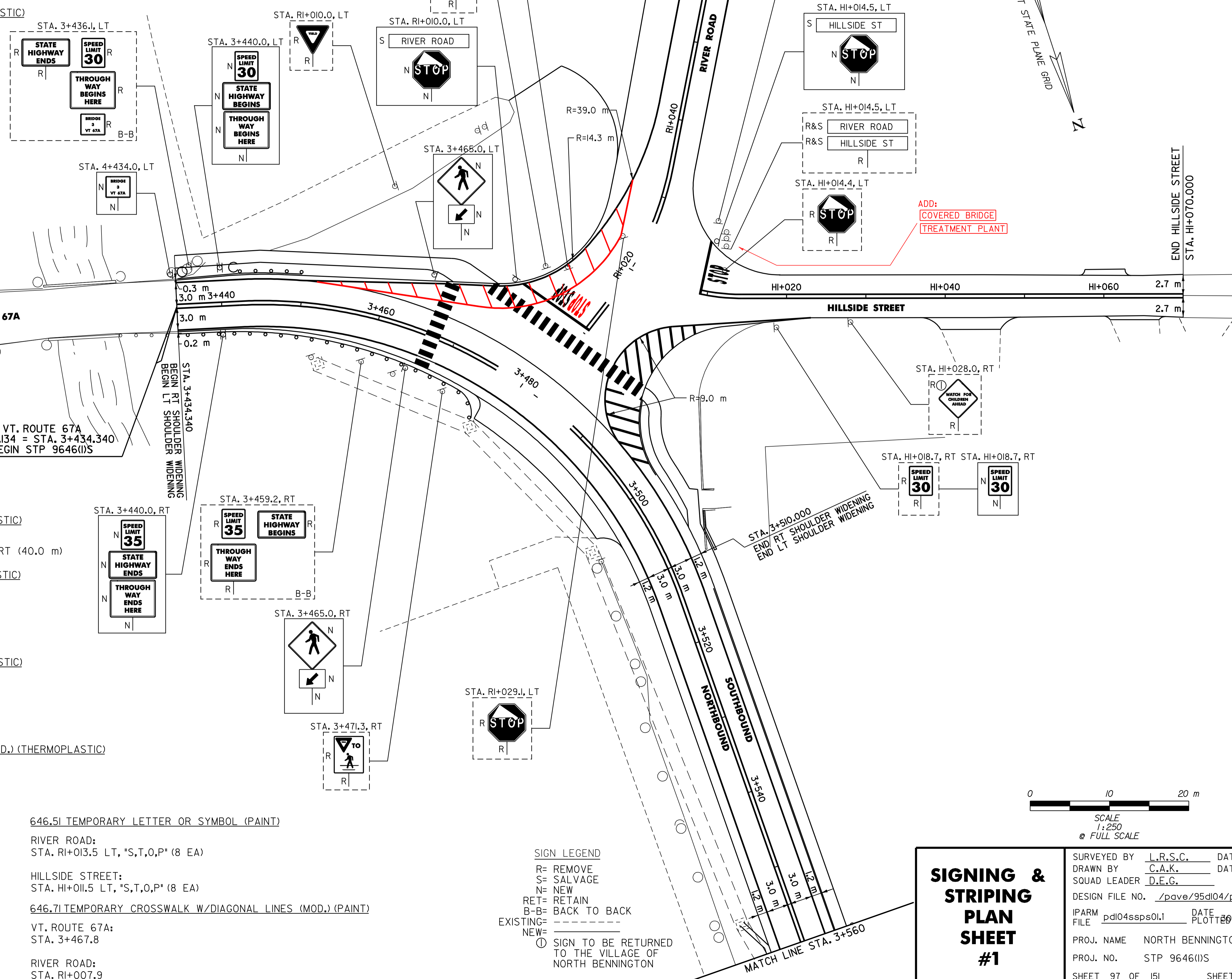
RIVER ROAD:
STA. RI+013.5 LT, "S,T,O,P" (8 EA)

HILLSIDE STREET:
STA. HI+011.5 LT, "S,T,O,P" (8 EA)

646.71 TEMPORARY CROSSWALK W/DIAGONAL LINES (MOD.) (PAINT)

VT. ROUTE 67A:
STA. 3+467.8

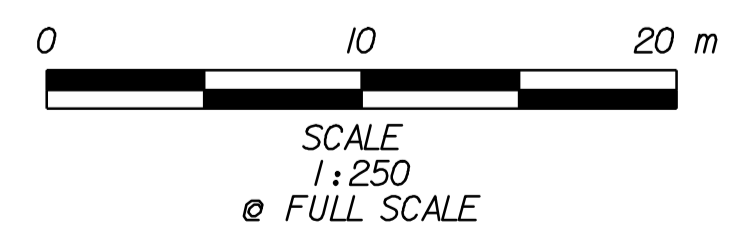
RIVER ROAD:
STA. RI+007.9



SIGN LEGEND

R= REMOVE
S= SALVAGE
N= NEW
RET= RETAIN
B-B= BACK TO BACK
EXISTING= - - - - -
NEW= _____

⊙ SIGN TO BE RETURNED TO THE VILLAGE OF NORTH BENNINGTON



<h2>SIGNING & STRIPING PLAN SHEET #1</h2>	SURVEYED BY	L.R.S.C.	DATE	4/03
	DRAWN BY	C.A.K.	DATE	3/06
	SQUAD LEADER	D.E.G.		
	DESIGN FILE NO.	/pave/95d104/pd104.dgn		
	IPARM FILE	pd104ssps01.1	DATE PLOTTED	20-AUG-2010 12:00
PROJ. NAME	NORTH BENNINGTON			
PROJ. NO.	STP 9646(IIS)			
SHEET	97 OF 151	SHEETS		