



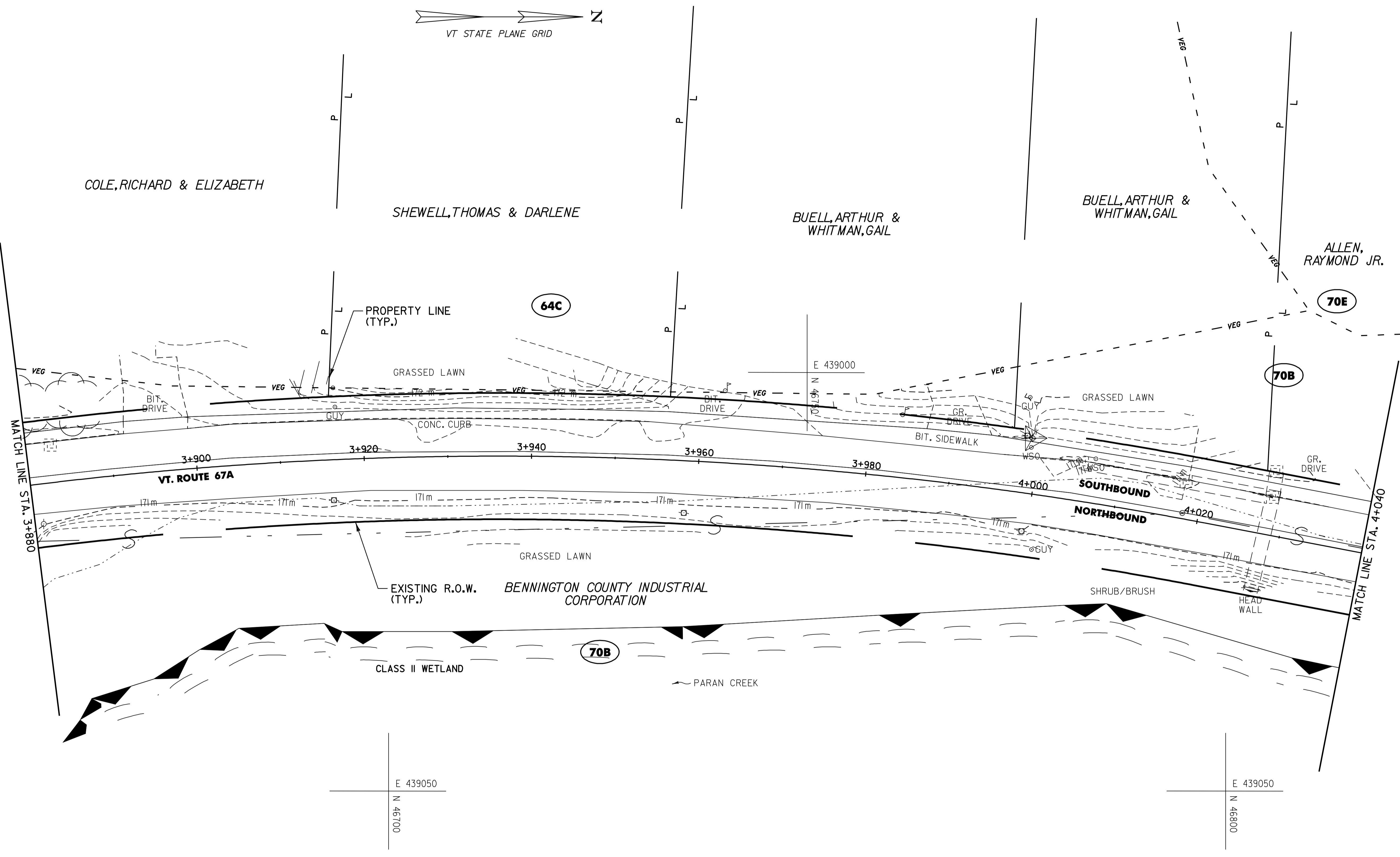
COLE, RICHARD & ELIZABETH

SHEWELL, THOMAS & DARLENE

BUELL, ARTHUR & WHITMAN, GAIL

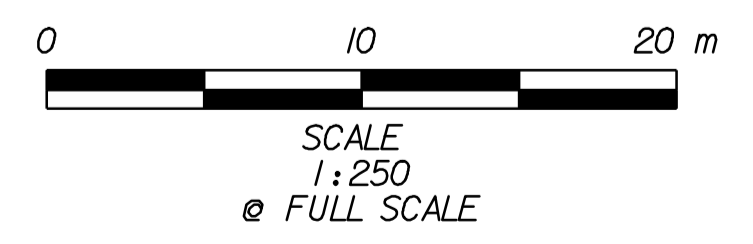
BUELL, ARTHUR & WHITMAN, GAIL

ALLEN, RAYMOND JR.



E 439050  
N 46700

E 439050  
N 46800



|            |              |
|------------|--------------|
| DATUM      |              |
| VERTICAL   | N/A          |
| HORIZONTAL | NAD83 (1996) |

| LEGEND |  |
|--------|--|
| (XXX)  | MAP UNIT TYPE (SEE SHEET 47 FOR DETAILS) |
| ---    | SOIL LINE BOUNDARY                       |
| ---    | WETLAND / RIPARIAN BOUNDARY              |
| ---    | WETLAND BUFFER                           |
| ---    | RIPARIAN BUFFER                          |

## EXISTING CONDITIONS PLAN #4

|                 |                        |              |                   |
|-----------------|------------------------|--------------|-------------------|
| SURVEYED BY     | L.R.S.C.               | DATE         | 4/03              |
| DRAWN BY        | C.A.K.                 | DATE         | 3/06              |
| SQUAD LEADER    | D.E.G.                 |              |                   |
| DESIGN FILE NO. | /pave/95dl04/pdl04.dgn |              |                   |
| IPARM FILE      | pdl04ecp4.1            | DATE PLOTTED | 30-AUG-2010 12:30 |
| PROJ. NAME      | NORTH BENNINGTON       |              |                   |
| PROJ. NO.       | STP 9646(I)S           |              |                   |
| SHEET           | 56 OF 151              | SHEETS       |                   |