

616.28 CAST-IN-PLACE CONCRETE CURB, TYPE B

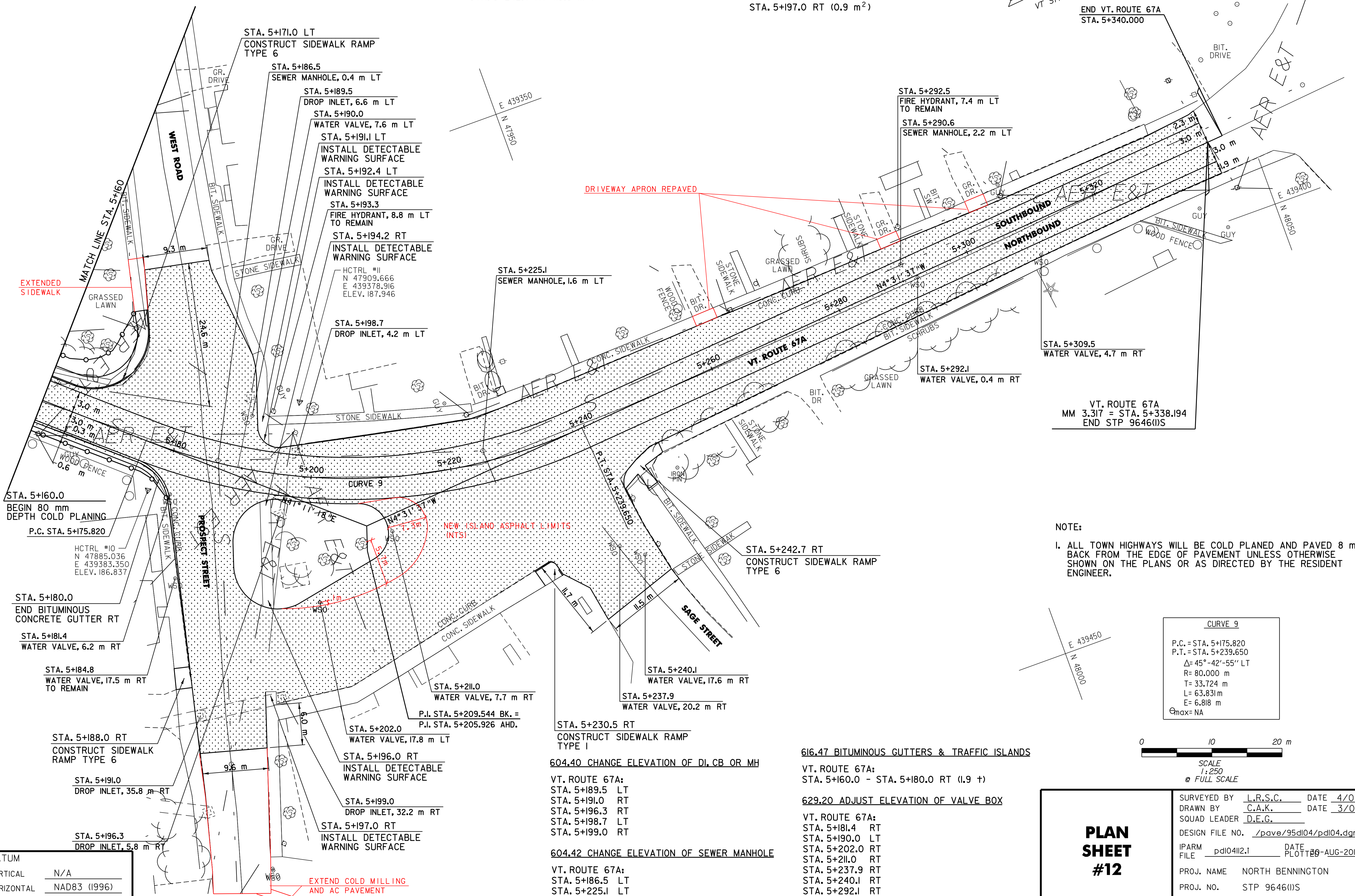
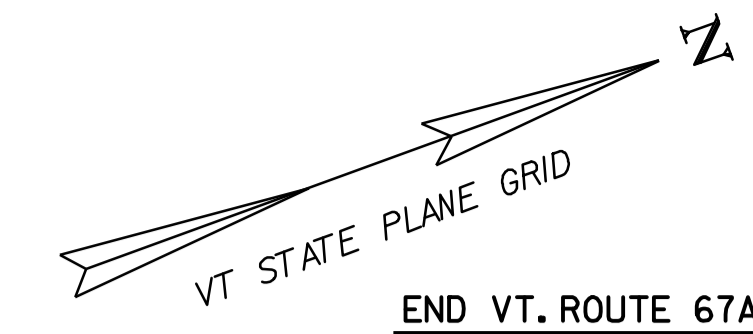
VT. ROUTE 67A:
STA. 5+160.0 - STA. 5+171.8 LT (22.1m)

618.10 PORTLAND CEMENT CONCRETE SIDEWALK, 125 mm

VT. ROUTE 67A:
STA. 5+160.0 - STA. 5+171.8 LT (31.0 m²)
STA. 5+188.0 RT (6.8 m²)
STA. 5+230.5 RT (7.1 m²)
STA. 5+242.7 RT (15.3 m²)

618.30 DETECTABLE WARNING SURFACES

VT. ROUTE 67A:
STA. 5+191.1 LT (0.9 m²)
STA. 5+192.4 LT (0.9 m²)
STA. 5+194.2 RT (0.9 m²)
STA. 5+196.0 RT (0.9 m²)
STA. 5+197.0 RT (0.9 m²)



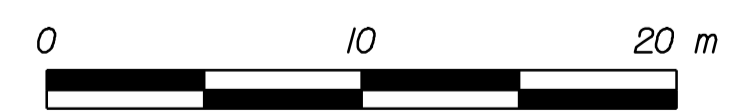
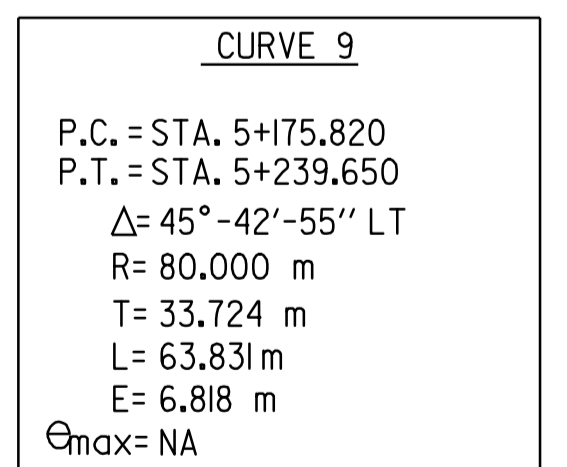
END VT. ROUTE 67A
STA. 5+340.000

STA. 5+309.5
WATER VALVE, 4.7 m RT

VT. ROUTE 67A
MM 3.317 = STA. 5+338.194
END STP 9646(IIS)

NOTE:

- 1. ALL TOWN HIGHWAYS WILL BE COLD PLANNED AND PAVED 8 m BACK FROM THE EDGE OF PAVEMENT UNLESS OTHERWISE SHOWN ON THE PLANS OR AS DIRECTED BY THE RESIDENT ENGINEER.



SCALE
1:250
@ FULL SCALE

DATUM	
VERTICAL	N/A
HORIZONTAL	NAD83 (1996)

604.40 CHANGE ELEVATION OF DI, CB OR MH

VT. ROUTE 67A:
STA. 5+189.5 LT
STA. 5+191.0 RT
STA. 5+196.3 RT
STA. 5+198.7 LT
STA. 5+199.0 RT

604.42 CHANGE ELEVATION OF SEWER MANHOLE

VT. ROUTE 67A:
STA. 5+186.5 LT
STA. 5+225.1 LT
STA. 5+290.6 LT

616.47 BITUMINOUS GUTTERS & TRAFFIC ISLANDS

VT. ROUTE 67A:
STA. 5+160.0 - STA. 5+180.0 RT (1.9 +)

629.20 ADJUST ELEVATION OF VALVE BOX

VT. ROUTE 67A:
STA. 5+181.4 RT
STA. 5+190.0 LT
STA. 5+202.0 RT
STA. 5+211.0 RT
STA. 5+237.9 RT
STA. 5+240.1 RT
STA. 5+292.1 RT
STA. 5+309.5 RT

PLAN SHEET #12

SURVEYED BY	L.R.S.C.	DATE	4/03
DRAWN BY	C.A.K.	DATE	3/06
SQUAD LEADER	D.E.G.		
DESIGN FILE NO.	/pave/95d104/pd104.dgn		
IPARM FILE	pd104i12.i	DATE PLOTTED	20-AUG-2010 12:
PROJ. NAME	NORTH BENNINGTON		
PROJ. NO.	STP 9646(IIS)		
SHEET	44 OF 151	SHEETS	