

616.28 CAST-IN-PLACE CONCRETE CURB, TYPE B

VT. ROUTE 67A:
 STA. 4+990.0 - STA. 5+081.4 LT (91.4 m)
 STA. 5+086.2 - STA. 5+118.4 LT (32.2 m)
 STA. 5+122.6 - STA. 5+160.0 LT (37.4 m)

618.10 PORTLAND CEMENT CONCRETE SIDEWALK, 125 mm

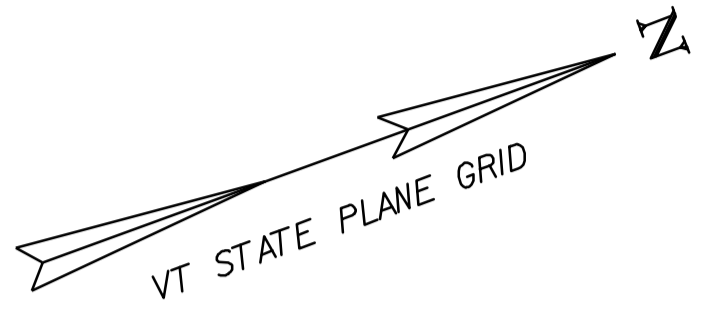
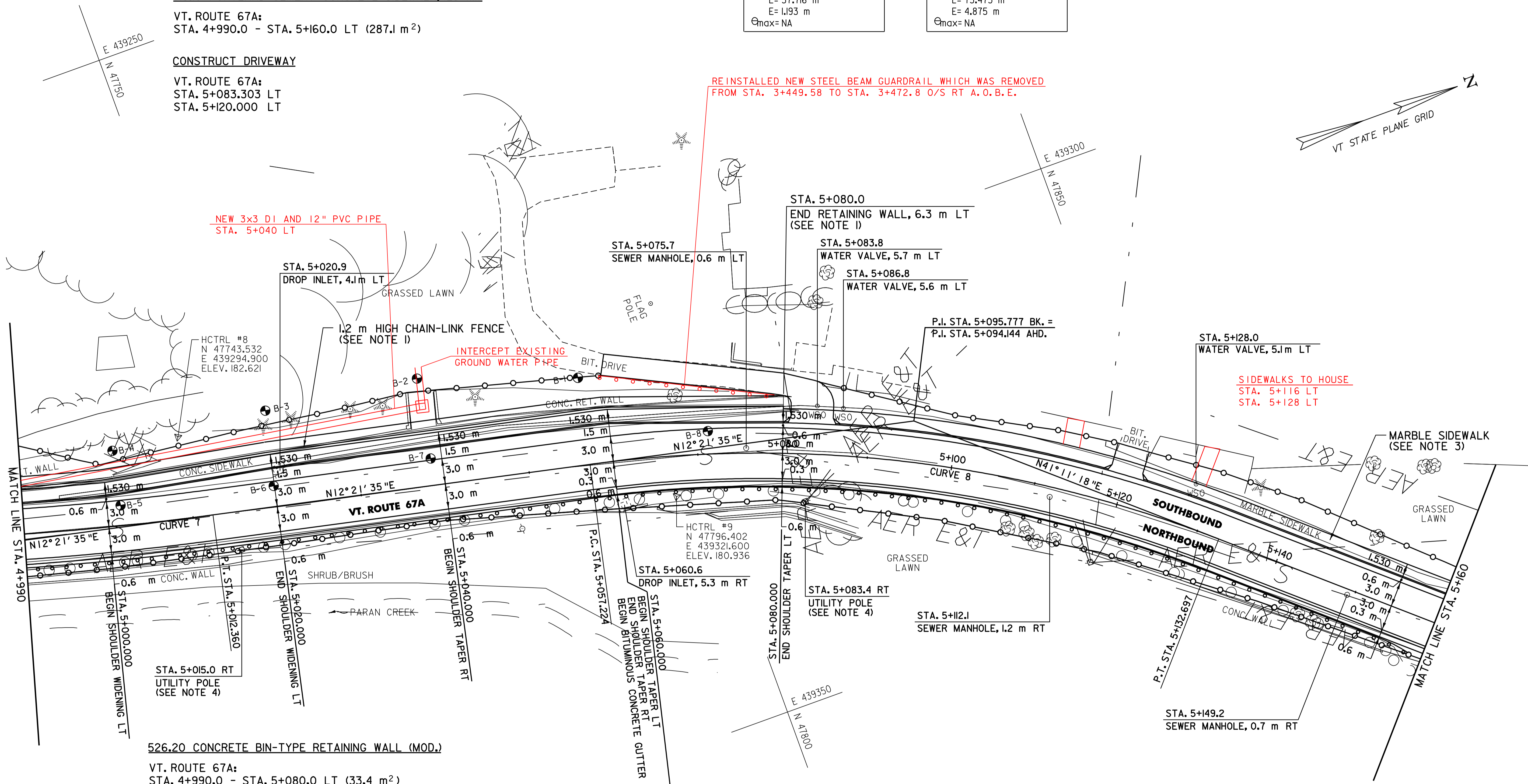
VT. ROUTE 67A:
 STA. 4+990.0 - STA. 5+160.0 LT (287.1 m²)

CONSTRUCT DRIVEWAY

VT. ROUTE 67A:
 STA. 5+083.303 LT
 STA. 5+120.000 LT

CURVE 7
 P.C. = STA. 4+954.644
 P.T. = STA. 5+012.360
 Δ = 09° - 26' - 54" LT
 R = 350.000 m
 T = 28.924 m
 L = 57.716 m
 E = 1.193 m
 e_{max} = NA

CURVE 8
 P.C. = STA. 5+057.224
 P.T. = STA. 5+132.697
 Δ = 28° - 49' - 43" RT
 R = 150.000 m
 T = 38.553 m
 L = 75.473 m
 E = 4.875 m
 e_{max} = NA



526.20 CONCRETE BIN-TYPE RETAINING WALL (MOD.)

VT. ROUTE 67A:
 STA. 4+990.0 - STA. 5+080.0 LT (33.4 m²)

604.412 REHABILITATION OF DI, CB OR MH, CLASS I

VT. ROUTE 67A:
 STA. 5+020.9 LT
 STA. 5+060.6 RT

604.42 CHANGE ELEVATION OF SEWER MANHOLE

VT. ROUTE 67A:
 STA. 5+075.7 LT
 STA. 5+112.1 RT
 STA. 5+149.2 RT

616.35 TREATED TIMBER CURB

VT. ROUTE 67A:
 STA. 4+930 - STA. 5+060 RT (130.34m)
 STA. 5+035.0 - STA. 5+120.0 RT (SEE NOTE 2) (70.0 m)
 060 155 94.32m

616.47 BITUMINOUS CONCRETE GUTTERS & TRAFFIC ISLANDS

VT. ROUTE 67A:
 STA. 5+060.0 - STA. 5+160.0 RT (9.6 +)

620.11 CHAIN-LINK FENCE, 1.2 m

VT. ROUTE 67A:
 STA. 4+990.0 - STA. 5+080.0 LT (90 m)

621.30 BOX BEAM GUARDRAIL (GALVANIZED) (MOD. - W/2.1m POSTS)

VT. ROUTE 67A:
 STA. 4+990.0 - STA. 5+159.0 RT (169.0 m)

621.80 REMOVAL AND DISPOSAL OF GUARDRAIL

VT. ROUTE 67A:
 STA. 4+990.0 - STA. 5+159.0 RT (169.0 m)

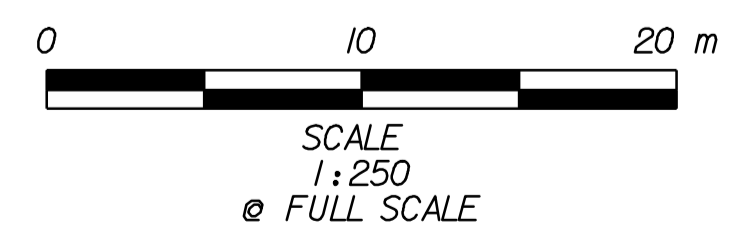
629.20 ADJUST ELEVATION OF VALVE BOX

VT. ROUTE 67A:
 STA. 5+083.8 LT
 STA. 5+086.8 LT
 STA. 5+128.0 LT

ITEM 621.71 GUARDRAIL APPROACH SECTION, TYPE II
 ADDED STA. 5+151 - STA. 5+159 O/S RT
 (END SECTIONS NOT IN CONTRACT)

NOTES:

- SEE SHEETS 90 AND 91 FOR RETAINING WALL DETAILS AND PROFILE.
- THE CONTRACTOR SHALL INSTALL A DOUBLE HEIGHT RUN OF TREATED TIMBER CURB AS DIRECTED BY THE RESIDENT ENGINEER.
- THE CONTRACTOR SHALL SALVAGE ALL SECTIONS OF THE EXISTING MARBLE SIDEWALK AND RETURN IT TO THE VILLAGE OF NORTH BENNINGTON AS DIRECTED BY THE RESIDENT ENGINEER.
- SEE SHEET 114 FOR REDUCED BOX BEAM GUARDRAIL POST SPACING AT UTILITY POLE DETAIL.



DATUM	
VERTICAL	N/A
HORIZONTAL	NAD83 (1996)

PLAN SHEET #11

SURVEYED BY	L.R.S.C.	DATE	4/03
DRAWN BY	C.A.K.	DATE	3/06
SQUAD LEADER	D.E.G.		
DESIGN FILE NO.	/pave/95d104/pdl04.dgn		
IPARM FILE	pdl04i1.i	DATE PLOTTED	20-AUG-2010 12:
PROJ. NAME	NORTH BENNINGTON		
PROJ. NO.	STP 9646(1)S		
SHEET	43 OF 151	SHEETS	