

616.28 CAST-IN-PLACE CONCRETE CURB, TYPE B

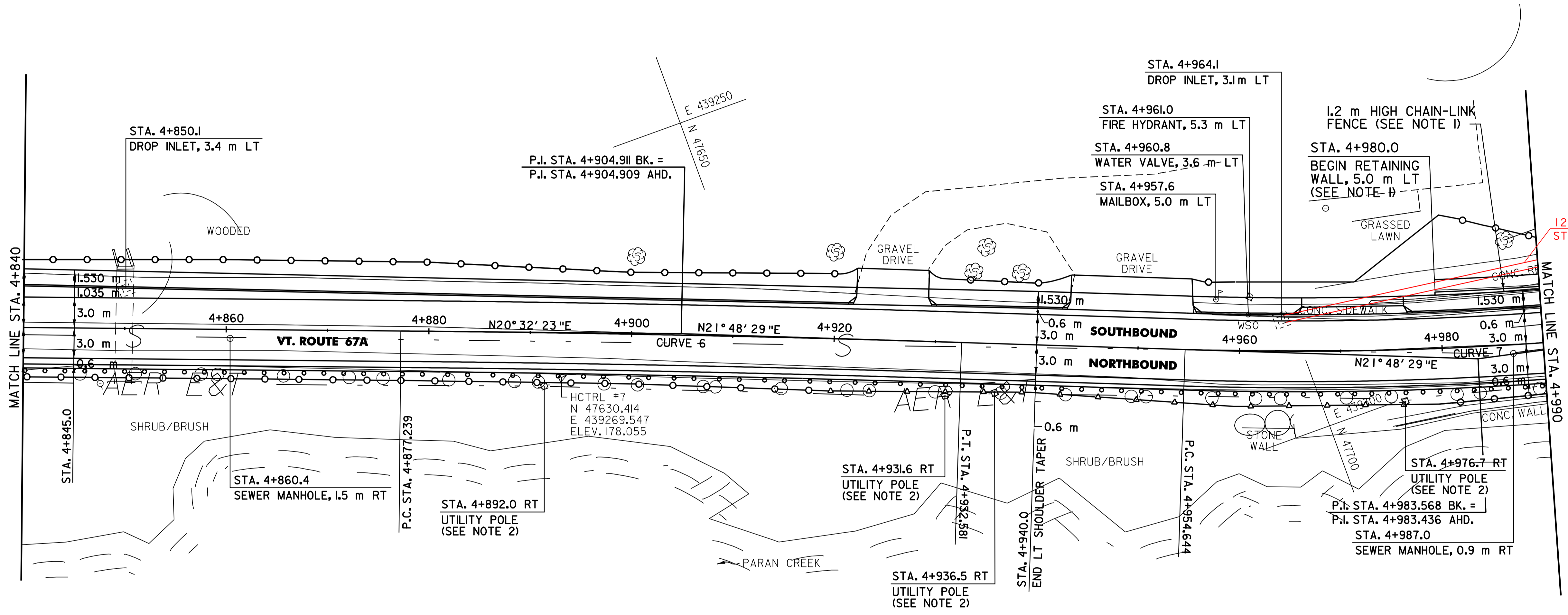
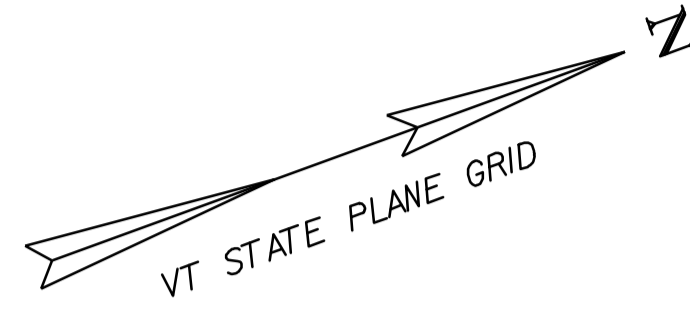
VT. ROUTE 67A:
 STA. 4+840.0 - STA. 4+922.3 LT (82.3 m)
 STA. 4+930.0 - STA. 4+943.5 LT (13.5 m)
 STA. 4+955.8 - STA. 4+990.0 LT (34.2 m)

618.10 PORTLAND CEMENT CONCRETE SIDEWALK, 125 mm

VT. ROUTE 67A:
 STA. 4+840.0 - STA. 4+990.0 LT (232.5 m²)

CONSTRUCT DRIVEWAY

VT. ROUTE 67A:
 STA. 4+925.647 LT
 STA. 4+949.167 LT
 STA. 4+971.147 LT



526.20 CONCRETE BIN-TYPE RETAINING WALL (MOD.)

VT. ROUTE 67A:
 STA. 4+980.0 - STA. 4+990.0 LT (3.7 m²)

604.412 REHABILITATION OF DI, CB OR MH, CLASS I

VT. ROUTE 67A:
 STA. 4+850.1 LT
 STA. 4+964.1 LT

604.42 CHANGE ELEVATION OF SEWER MANHOLE

VT. ROUTE 67A:
 STA. 4+860.4 RT
 STA. 4+987.0 RT

617.10 RELOCATE MAILBOX, SINGLE SUPPORT

VT. ROUTE 67A:
 STA. 4+957.6 LT

620.11 CHAIN-LINK FENCE, 1.2 m

VT. ROUTE 67A:
 STA. 4+980.0 - STA. 4+990.0 LT (10 m)

621.30 BOX BEAM GUARDRAIL (GALVANIZED)(MOD. - W/2.1m POST)

VT. ROUTE 67A:
 STA. 4+840.0 - STA. 4+990.0 RT (150.0 m)

621.80 REMOVAL AND DISPOSAL OF GUARDRAIL

VT. ROUTE 67A:
 STA. 4+840.0 - STA. 4+990.0 RT (150.0 m)

629.20 ADJUST ELEVATION OF VALVE BOX

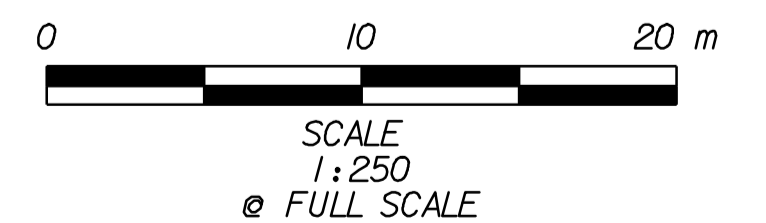
VT. ROUTE 67A:
 STA. 4+960.8 LT

629.29 RELOCATE HYDRANT

VT. ROUTE 67A:
 STA. 4+961.0 LT

NOTES:

- SEE SHEETS 90 AND 91 FOR RETAINING WALL DETAILS AND PROFILE.
- SEE SHEET 114 FOR REDUCED BOX BEAM GUARDRAIL POST SPACING AT UTILITY POLE DETAIL.



CURVE 6	
P.C. = STA. 4+877.239	
P.T. = STA. 4+932.581	
Δ = 0°-16'-06" RT	
R = 2500.000	
T = 27.672 m	
L = 55.342 m	
E = 0.153 m	
Q _{max} = NA	

CURVE 7	
P.C. = STA. 4+954.644	
P.T. = STA. 5+012.360	
Δ = 0°-26'-54" LT	
R = 350.000 m	
T = 28.924 m	
L = 57.716 m	
E = 1.193 m	
Q _{max} = NA	

DATUM	
VERTICAL	N/A
HORIZONTAL	NAD83 (1996)

PLAN SHEET #10

SURVEYED BY	L.R.S.C.	DATE	4/03
DRAWN BY	C.A.K.	DATE	3/06
SQUAD LEADER	D.E.G.		
DESIGN FILE NO.	/pave/95d104/pdl104.dgn		
IPARM FILE	pdl104i10.i	DATE PLOTTED	20-AUG-2010 12:00
PROJ. NAME	NORTH BENNINGTON		
PROJ. NO.	STP 9646(I)S		
SHEET	42 OF 151	SHEETS	