

616.28 CAST-IN-PLACE CONCRETE CURB, TYPE B

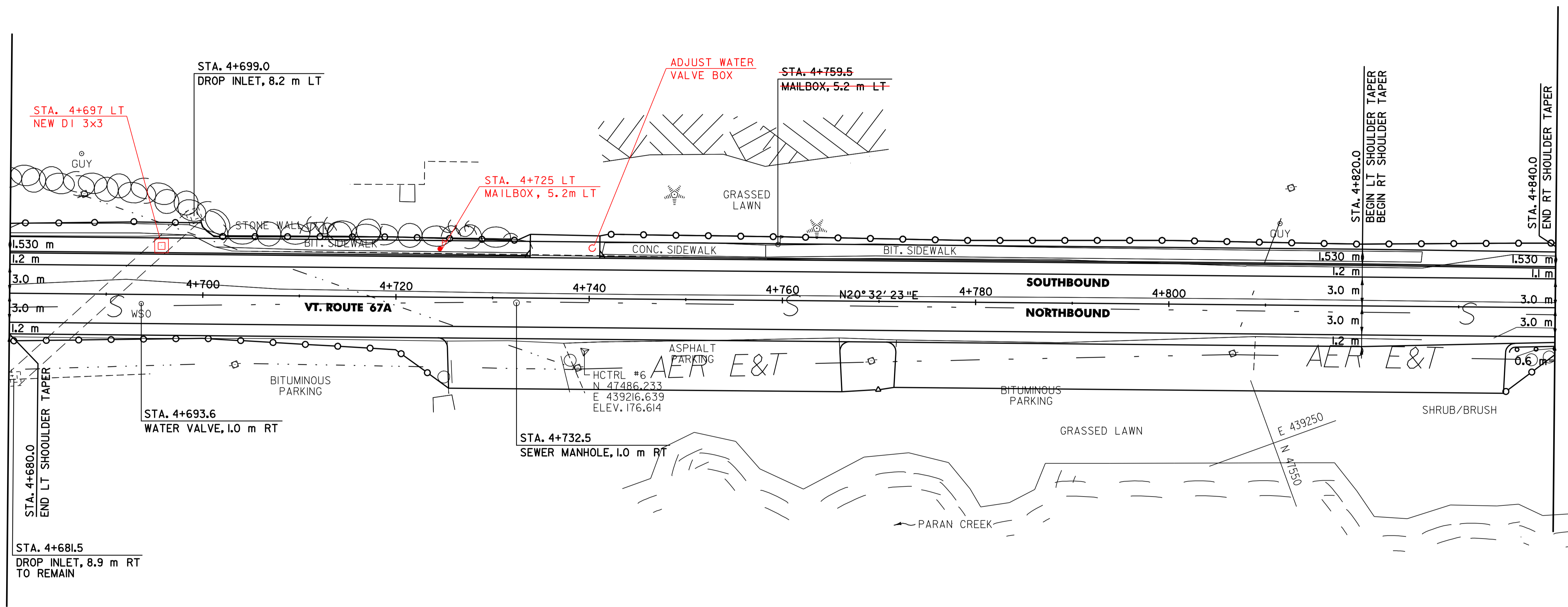
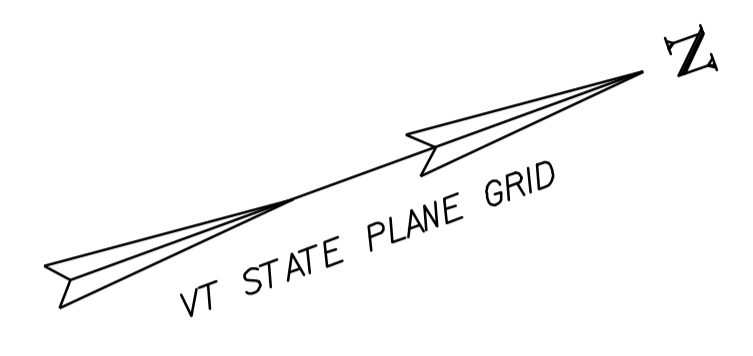
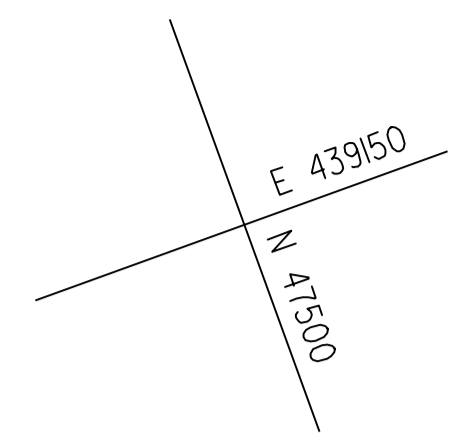
VT. ROUTE 67A:
 STA. 4+680.0 - STA. 4+733.8 LT (93.8 m)
 STA. 4+741.0 - STA. 4+840.0 LT (99 m)

618.10 PORTLAND CEMENT CONCRETE SIDEWALK, 125 mm

VT. ROUTE 67A:
 STA. 4+680.0 - STA. 4+840.0 LT (244.8 m²)

CONSTRUCT DRIVEWAY

VT. ROUTE 67A:
 STA. 4+737.445 LT



621.71 GUARDRAIL APPROACH SECTION, TYPE 11
 STA. 4+836 - STA. 4+844 O/S RT
 NOT INCLUDED IN ORIGINAL CONTRACT

604.40 CHANGE ELEVATION OF DI, CB OR MH

VT. ROUTE 67A:
 STA. 4+699.0 LT

621.30 BOX BEAM GUARDRAIL (GALVANIZED) (MOD. - W/2.1 m POSTS)

VT. ROUTE 67A:
 STA. 4+836.0 - STA. 4+840.0, RT (4.0 m)

604.42 CHANGE ELEVATION OF SEWER MANHOLE

VT. ROUTE 67A:
 STA. 4+732.5 RT

621.80 REMOVAL AND DISPOSAL OF GUARDRAIL

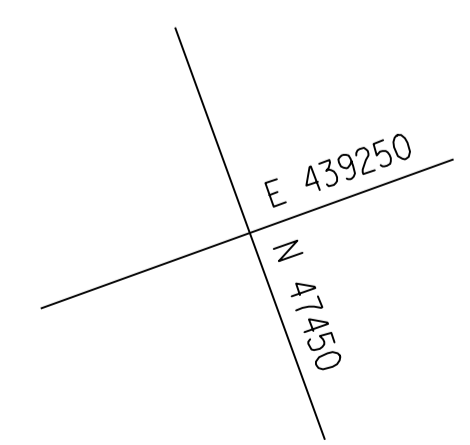
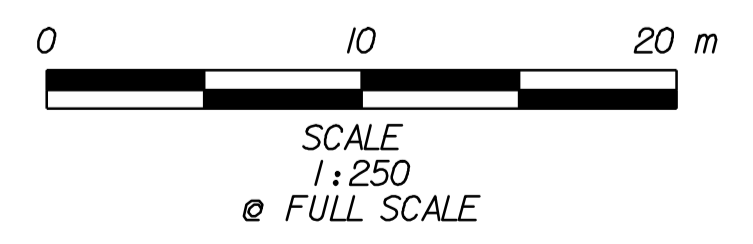
VT. ROUTE 67A:
 STA. 4+836.0 - STA. 4+840.0, RT (4.0 m)

617.10 RELOCATE MAILBOX, SINGLE SUPPORT

VT. ROUTE 67A:
 STA. 4+759.5 - LT
 725

629.20 ADJUST ELEVATION OF VALVE BOX

VT. ROUTE 67A:
 STA. 4+693.6, RT
 STA. 4+740 LT



DATUM	
VERTICAL	N/A
HORIZONTAL	NAD83 (1996)

PLAN SHEET #9

SURVEYED BY	L.R.S.C.	DATE	4/03
DRAWN BY	C.A.K.	DATE	3/06
SQUAD LEADER	D.E.G.		
DESIGN FILE NO.	/pave/95dl04/pdl04.dgn		
IPARM FILE	pdl04109.1	DATE PLOTTED	20-AUG-2010 12:00
PROJ. NAME	NORTH BENNINGTON		
PROJ. NO.	STP 9646(IIS)		
SHEET 41	OF 151	SHEETS	