

616.28 CAST-IN-PLACE CONCRETE CURB, TYPE B

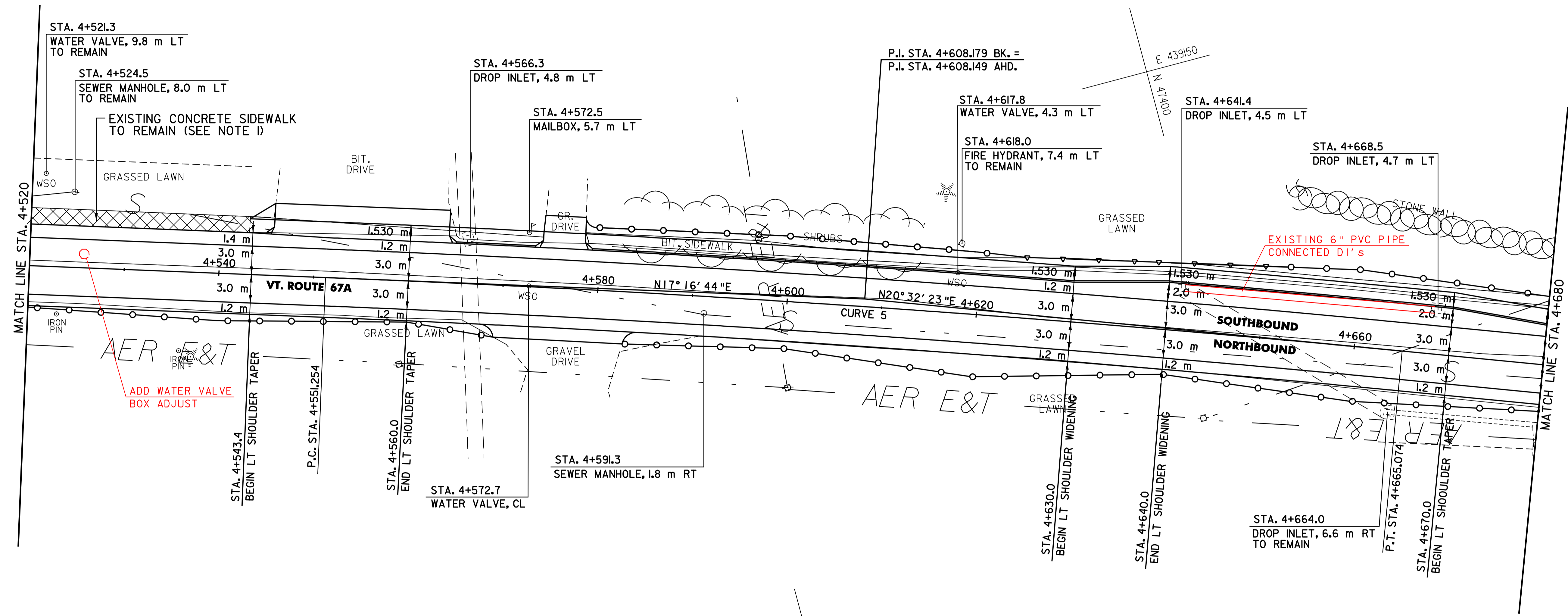
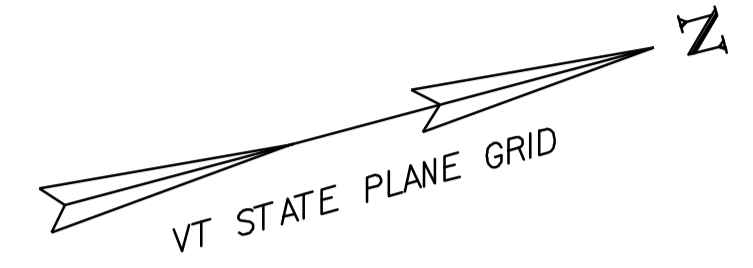
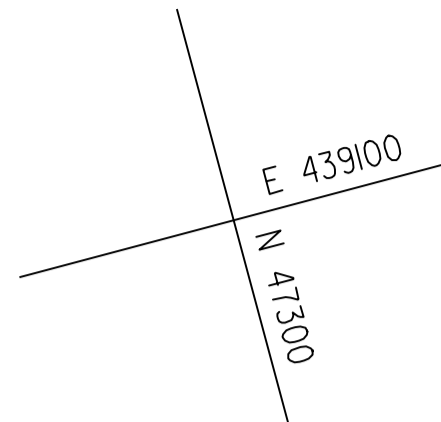
VT. ROUTE 67A:
 STA. 4+543.4 - STA. 4+545.8 LT (2.4 m)
 STA. 4+564.9 - STA. 4+574.2 LT (9.3 m)
 STA. 4+579.2 - STA. 4+680.0 LT (100.8 m)

CONSTRUCT DRIVEWAY

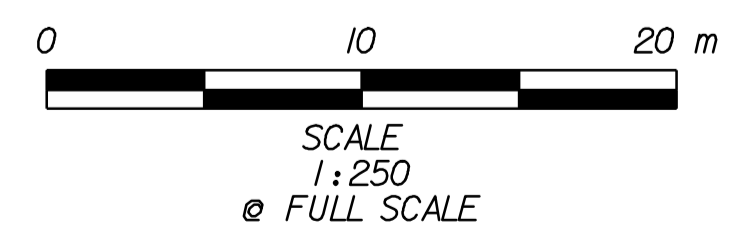
VT. ROUTE 67A:
 STA. 4+554.917 LT
 STA. 4+576.029 LT
 STA. 4+576.266 RT

618.10 PORTLAND CEMENT CONCRETE SIDEWALK, 125 mm

VT. ROUTE 67A:
 STA. 4+543.4 - STA. 4+680.0 LT (209.0 m²)



CURVE 5
 P.C. = STA. 4+551.254
 P.T. = STA. 4+665.074
 $\Delta = 03^\circ - 15' - 39''$ RT
 R = 2000.000 m
 T = 56.925 m
 L = 113.820 m
 E = 0.810 m
 $C_{max} = NA$



604.412 REHABILITATION OF DI, CB OR MH, CLASS I

VT. ROUTE 67A:
 STA. 4+566.3 LT
 STA. 4+641.4 LT
 STA. 4+668.5 LT

604.42 CHANGE ELEVATION OF SEWER MANHOLE

VT. ROUTE 67A:
 STA. 4+591.3 RT

617.10 RELOCATE MAILBOX, SINGLE SUPPORT

VT. ROUTE 67A:
 STA. 4+572.5 LT

629.20 ADJUST ELEVATION OF VALVE BOX

VT. ROUTE 67A:
 STA. 4+572.7 CL
 STA. 4+617.8 LT

NOTE:

1. THE EXISTING CONCRETE SIDEWALK LOCATED IN FRONT OF KRONE OPTICAL STA. 4+187.2 TO STA. 4+543.4 LT IS TO REMAIN.

DATUM
 VERTICAL N/A
 HORIZONTAL NAD83 (1996)

<p>PLAN SHEET #8</p>	SURVEYED BY <u>L.R.S.C.</u> DATE <u>4/03</u>
	DRAWN BY <u>C.A.K.</u> DATE <u>3/06</u>
	SQUAD LEADER <u>D.E.G.</u>
	DESIGN FILE NO. <u>/pave/95d104/pd104.dgn</u>
	IPARM FILE <u>pd104108.1</u> DATE <u>20-AUG-2010 12:</u>
PROJ. NAME <u>NORTH BENNINGTON</u>	
PROJ. NO. <u>STP 9646(1)S</u>	
SHEET <u>40</u> OF <u>151</u> SHEETS	