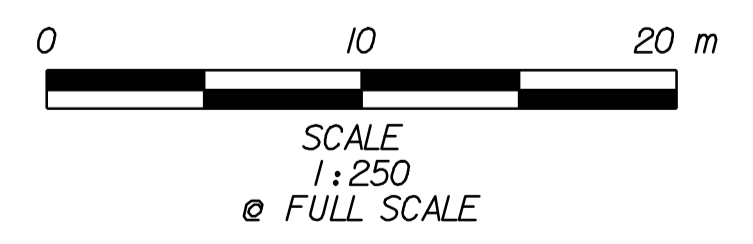
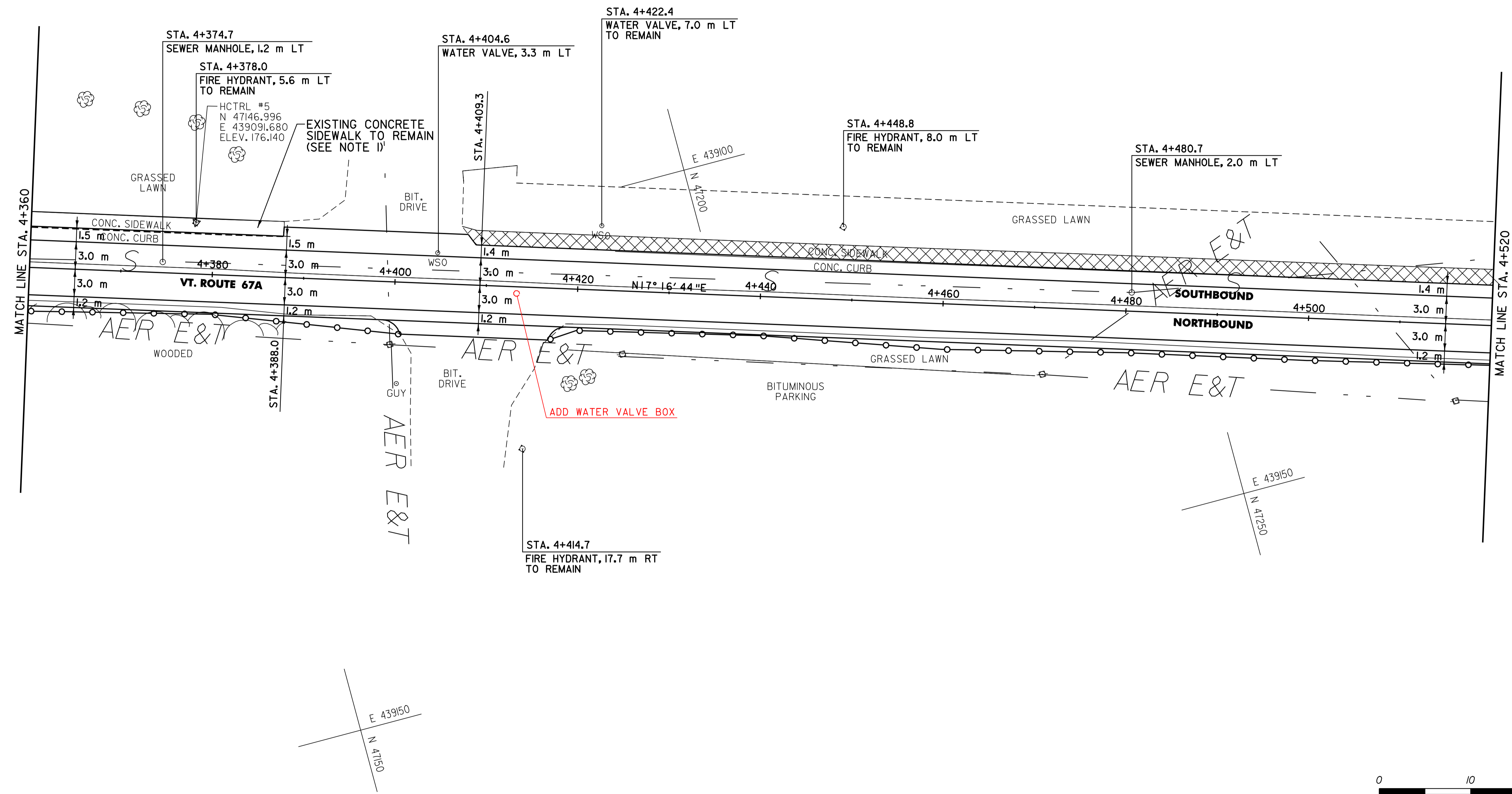
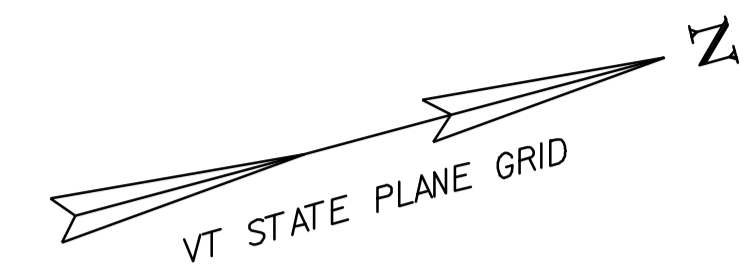


**CONSTRUCT DRIVEWAY**

VT. ROUTE 67A:  
 STA. 4+397.733 LT  
 STA. 4+408.844 RT



**604.42 CHANGE ELEVATION OF SEWER MANHOLE**

VT. ROUTE 67A:  
 STA. 4+374.7 LT  
 STA. 4+480.7 RT

**629.20 ADJUST ELEVATION OF VALVE BOX**

VT. ROUTE 67A:  
 STA. 4+404.6 LT      **STA. 4+414 RT**

DATUM	
VERTICAL	N/A
HORIZONTAL	NAD83 (1996)

**NOTE:**

1. THE EXISTING CONCRETE SIDEWALK LOCATED IN FRONT OF KRONE OPTICAL STA. 4+187.2 TO STA. 4+543.4 LT IS TO REMAIN.

**PLAN SHEET #7**

SURVEYED BY	L.R.S.C.	DATE	4/03
DRAWN BY	C.A.K.	DATE	3/06
SQUAD LEADER	D.E.G.		
DESIGN FILE NO.	/pave/95dl04/pdl04.dgn		
IPARM FILE	pdl0407.1	DATE PLOTTED	20-AUG-2010 12:00
PROJ. NAME	NORTH BENNINGTON		
PROJ. NO.	STP 9646(I)S		
SHEET	39 OF 151	SHEETS	