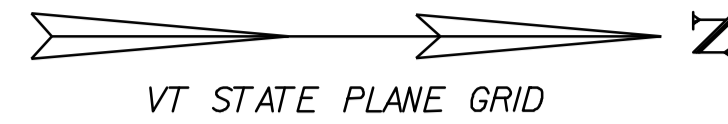


**616.28 CAST-IN-PLACE CONCRETE CURB, TYPE B**

VT. ROUTE 67A:  
 STA. 3+880.0 - STA. 3+891.6 LT (11.6 m)  
 STA. 3+899.8 - STA. 3+951.0 LT (51.2 m)  
 STA. 3+961.5 - STA. 3+986.7 LT (25.2 m)  
 STA. 3+994.4 - STA. 4+040.0 LT (45.6 m)



**618.10 PORTLAND CEMENT CONCRETE SIDEWALK, 125 mm**

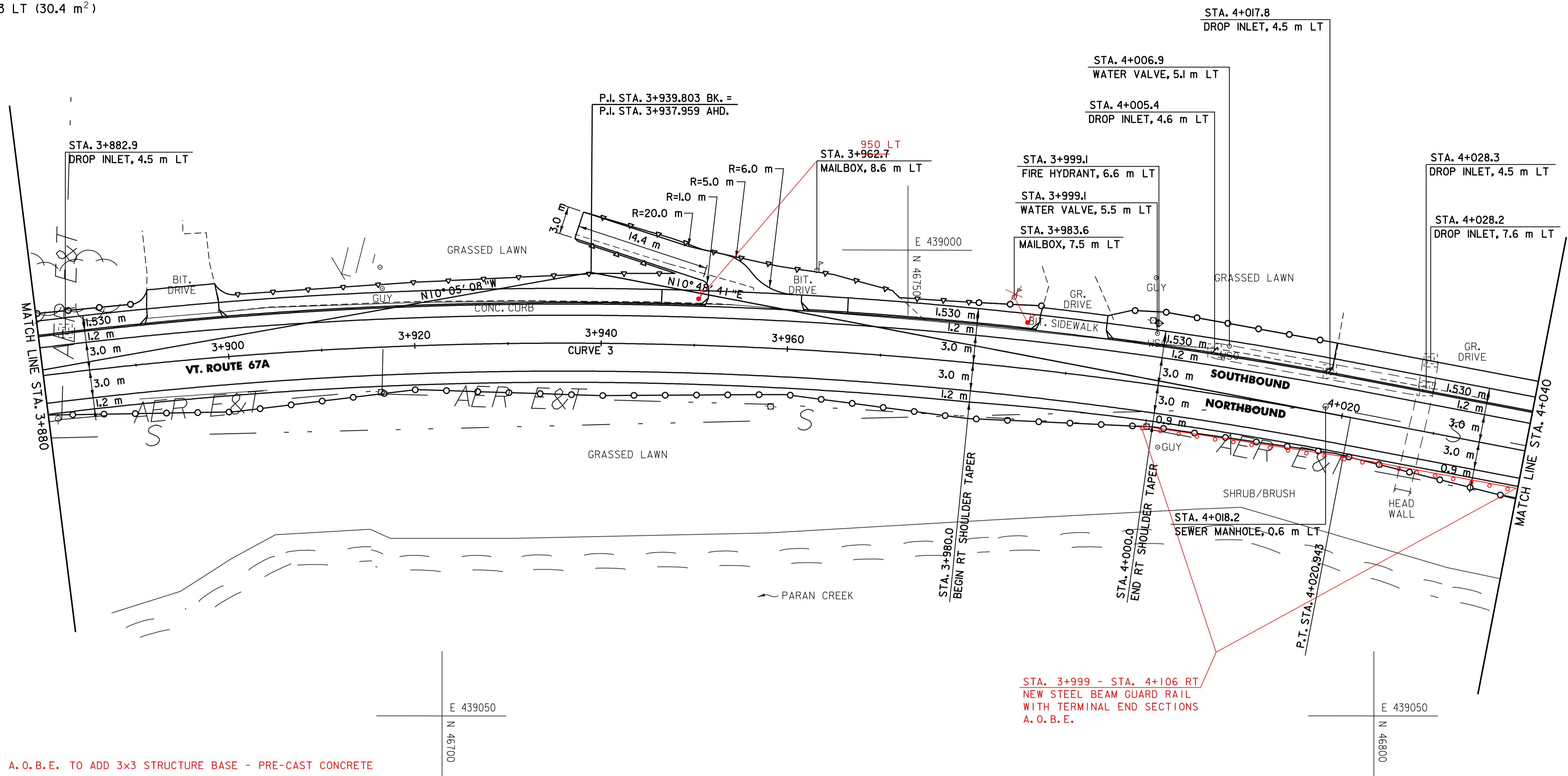
VT. ROUTE 67A:  
 STA. 3+880.0 - STA. 3+946.4 LT (101.6 m<sup>2</sup>)  
 STA. 3+966.3 - STA. 4+040.0 LT (112.8 m<sup>2</sup>)

**618.11 PORTLAND CEMENT CONCRETE SIDEWALK, 200 mm**

VT. ROUTE 67A:  
 STA. 3+946.4 - STA. 3+966.3 LT (30.4 m<sup>2</sup>)

**CONSTRUCT DRIVEWAY**

VT. ROUTE 67A:  
 STA. 3+895.540 LT  
 STA. 3+956.275 LT  
 STA. 3+990.219 LT  
 STA. 4+029.306 LT



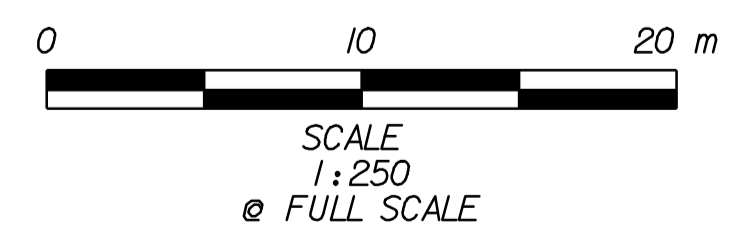
A. O. B. E. TO ADD 3x3 STRUCTURE BASE - PRE-CAST CONCRETE

CURVE 3	
P.C. =	STA. 3+856.819
P.T. =	STA. 4+020.943
Δ =	20° -53' -49" RT
R =	450.000 m
T =	82.984 m
L =	164.124 m
E =	7.588 m
Emax =	NA

- A. O. B. E. TO REHAB
- ~~604.40 CHANGE ELEVATION OF DI, CB OR MH~~
- VT. ROUTE 67A:
- ~~STA. 4+028.2 LT~~
- 604.412 REHABILITATION OF DI, CB OR MH, CLASS I
- VT. ROUTE 67A:
- STA. 3+882.9 LT
- STA. 4+005.4 LT
- STA. 4+017.8 LT
- STA. 4+028.3 LT
- ~~STA. 4+028.2 LT~~
- 604.42 CHANGE ELEVATION OF SEWER MANHOLE
- VT. ROUTE 67A:
- STA. 4+018.2 LT

- 617.10 RELOCATE MAILBOX, SINGLE SUPPORT
- VT. ROUTE 67A:
- STA. 3+962.7 LT
- STA. 3+983.6 LT
- 629.20 ADJUST ELEVATION OF VALVE BOX
- VT. ROUTE 67A:
- STA. 3+999.1 LT
- STA. 4+006.9 LT
- 629.29 RELOCATE HYDRANT
- VT. ROUTE 67A:
- STA. 3+999.1 LT

STA. 3+999 - STA. 4+106 RT  
 NEW STEEL BEAM GUARD RAIL  
 WITH TERMINAL END SECTIONS  
 A. O. B. E.



DATUM	
VERTICAL	N/A
HORIZONTAL	NAD83 (1996)

**PLAN SHEET #4**

SURVEYED BY	L.R.S.C.	DATE	4/03
DRAWN BY	C.A.K.	DATE	3/06
SQUAD LEADER	D.E.G.		
DESIGN FILE NO.	/pave/95d104/pd104.dgn		
IPARM FILE	pd104104.1	DATE PLOTTED	20-AUG-2010 12:00
PROJ. NAME	NORTH BENNINGTON		
PROJ. NO.	STP 9646(I)S		
SHEET	36 OF 151	SHEETS	