

LEGEND

- PDF — CONSTRUCTION FENCE
- SILT FENCE
- ▭ CULVERT INLET PROTECTION
- ▣ DRAINAGE STRUCTURE PROTECTION

**BEGIN R.O.W. PROJECT  
STP 9646(1) S  
STA. 3 + 434.340**

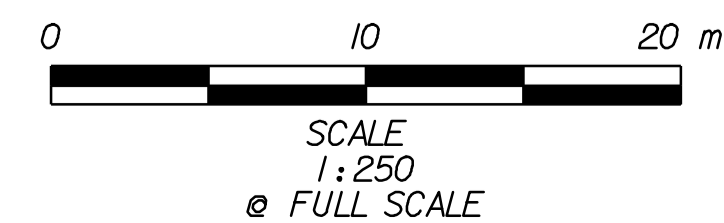
**R.O.W. PLANS**

**PLAN SHEET #1**

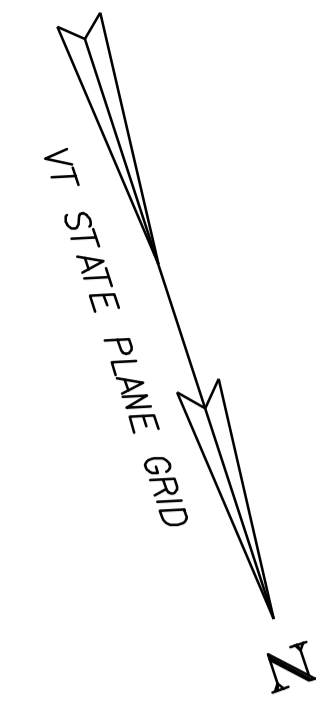
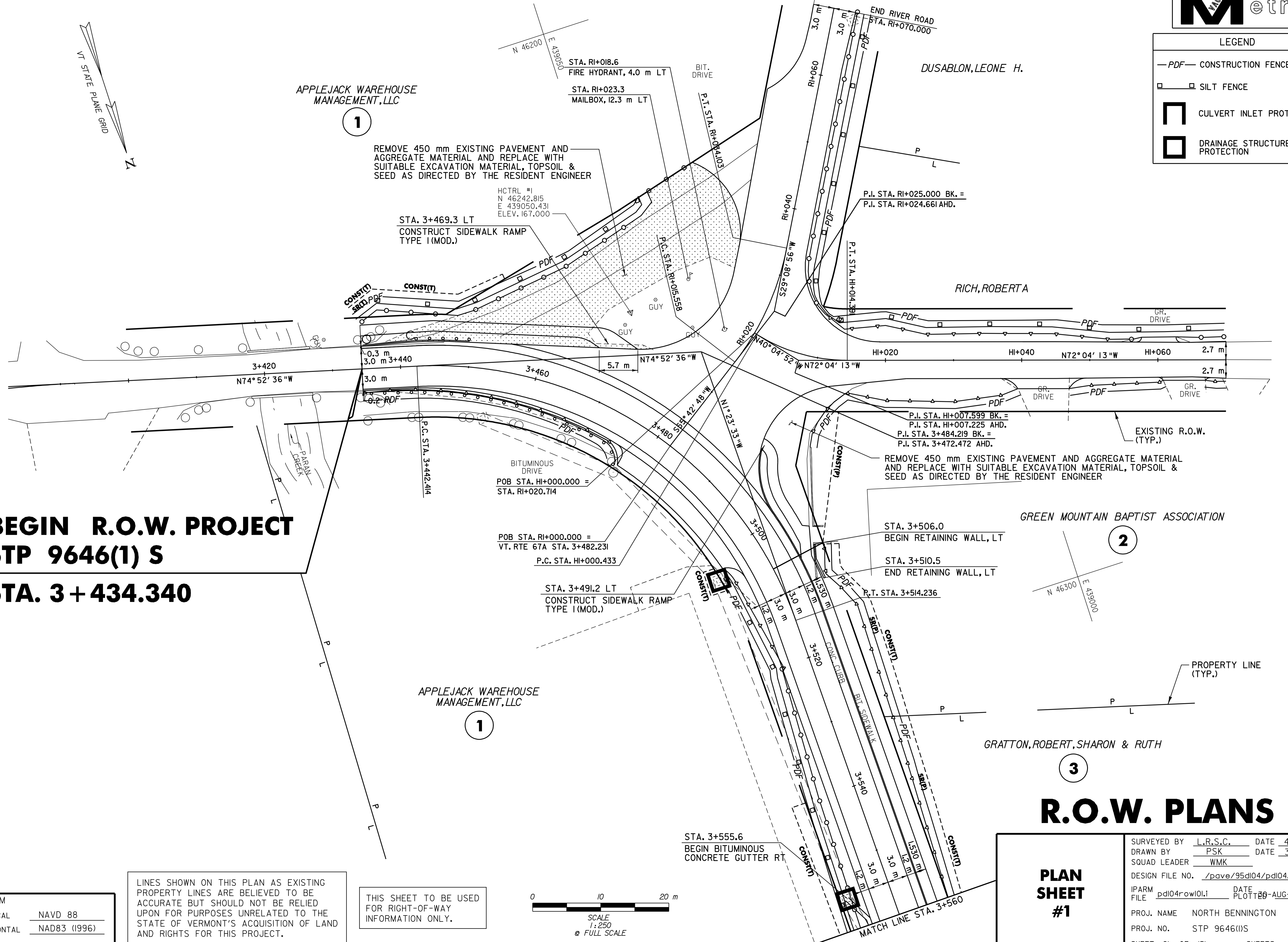
SURVEYED BY	L.R.S.C.	DATE	4/03
DRAWN BY	PSK	DATE	3/06
SQUAD LEADER	WMK		
DESIGN FILE NO.	/pave/95d104/pdl04.dgn		
IPARM FILE	pd104row101.i	DATE PLOTTED	20-AUG-2010 12:
PROJ. NAME	NORTH BENNINGTON		
PROJ. NO.	STP 9646(1)S		
SHEET 21 OF 151		SHEETS	

LINES SHOWN ON THIS PLAN AS EXISTING PROPERTY LINES ARE BELIEVED TO BE ACCURATE BUT SHOULD NOT BE RELIED UPON FOR PURPOSES UNRELATED TO THE STATE OF VERMONT'S ACQUISITION OF LAND AND RIGHTS FOR THIS PROJECT.

THIS SHEET TO BE USED FOR RIGHT-OF-WAY INFORMATION ONLY.



DATUM	
VERTICAL	NAVD 88
HORIZONTAL	NAD83 (1996)



1

2

1

3

APPLEJACK WAREHOUSE MANAGEMENT, LLC

APPLEJACK WAREHOUSE MANAGEMENT, LLC

GREEN MOUNTAIN BAPTIST ASSOCIATION

GRATTON, ROBERT, SHARON & RUTH

REMOVE 450 mm EXISTING PAVEMENT AND AGGREGATE MATERIAL AND REPLACE WITH SUITABLE EXCAVATION MATERIAL, TOPSOIL & SEED AS DIRECTED BY THE RESIDENT ENGINEER

REMOVE 450 mm EXISTING PAVEMENT AND AGGREGATE MATERIAL AND REPLACE WITH SUITABLE EXCAVATION MATERIAL, TOPSOIL & SEED AS DIRECTED BY THE RESIDENT ENGINEER

STA. 3+469.3 LT  
CONSTRUCT SIDEWALK RAMP TYPE I (MOD.)

STA. 3+491.2 LT  
CONSTRUCT SIDEWALK RAMP TYPE I (MOD.)

STA. 3+506.0  
BEGIN RETAINING WALL, LT

STA. 3+510.5  
END RETAINING WALL, LT

STA. 3+555.6  
BEGIN BITUMINOUS CONCRETE GUTTER RT

HCTRL #1  
N 46242.815  
E 439050.431  
ELEV. 167.000

P.I. STA. RI+025.000 BK. =  
P.I. STA. RI+024.661 AHD.

P.I. STA. HI+007.599 BK. =  
P.I. STA. HI+007.225 AHD.  
P.I. STA. 3+484.219 BK. =  
P.I. STA. 3+472.472 AHD.

POB STA. RI+000.000 =  
VT. RTE 67A STA. 3+482.231  
P.C. STA. HI+000.433

POB STA. HI+000.000 =  
STA. RI+020.714

STA. RI+018.6  
FIRE HYDRANT, 4.0 m LT  
STA. RI+023.3  
MAILBOX, 12.3 m LT

CONST(T)  
SRD

CONST(T)

CONST(T)  
SRD

CONST(T)

MATCH LINE STA. 3+560

EXISTING R.O.W. (TYP.)

PROPERTY LINE (TYP.)

DUSABLON, LEONE H.

RICH, ROBERTA

3+420

3+440

3+460

3+480

3+500

3+520

3+540

3+560

3+580

3+600

3+620

3+640

3+660

N74°52'36"W

N74°52'36"W

N72°04'13"W

N72°04'13"W

P.C. STA. 3+442.414

P.C. STA. HI+000.433

P.C. STA. 3+491.236

P.T. STA. 3+514.236

P.T. STA. 3+560.000

P.T. STA. RI+024.103

P.T. STA. HI+014.381

P.T. STA. 3+482.231

P.T. STA. 3+514.236

P.T. STA. 3+555.6

P.T. STA. 3+560.000

P.T. STA. 3+560.000

BIT. DRIVE

BITUMINOUS DRIVE

BIT. DRIVE

BIT. DRIVE

BIT. DRIVE

BIT. DRIVE

GR. DRIVE

GR. DRIVE

GR. DRIVE

GR. DRIVE

GR. DRIVE

GR. DRIVE

GR. DRIVE

GR. DRIVE

CONCRETE GUTTER

CONCRETE GUTTER

CONCRETE GUTTER

CONCRETE GUTTER

CONCRETE GUTTER

CONCRETE GUTTER

CONCRETE GUTTER

CONCRETE GUTTER

SILT FENCE

SILT FENCE

SILT FENCE

SILT FENCE

SILT FENCE

SILT FENCE

SILT FENCE

SILT FENCE

CONSTRUCTION FENCE

CONSTRUCTION FENCE

CONSTRUCTION FENCE

CONSTRUCTION FENCE

CONSTRUCTION FENCE

CONSTRUCTION FENCE

CONSTRUCTION FENCE

CONSTRUCTION FENCE

CULVERT INLET PROTECTION

CULVERT INLET PROTECTION

CULVERT INLET PROTECTION

CULVERT INLET PROTECTION

CULVERT INLET PROTECTION

CULVERT INLET PROTECTION

CULVERT INLET PROTECTION

CULVERT INLET PROTECTION

DRAINAGE STRUCTURE PROTECTION

DRAINAGE STRUCTURE PROTECTION

DRAINAGE STRUCTURE PROTECTION

DRAINAGE STRUCTURE PROTECTION

DRAINAGE STRUCTURE PROTECTION

DRAINAGE STRUCTURE PROTECTION

DRAINAGE STRUCTURE PROTECTION

DRAINAGE STRUCTURE PROTECTION