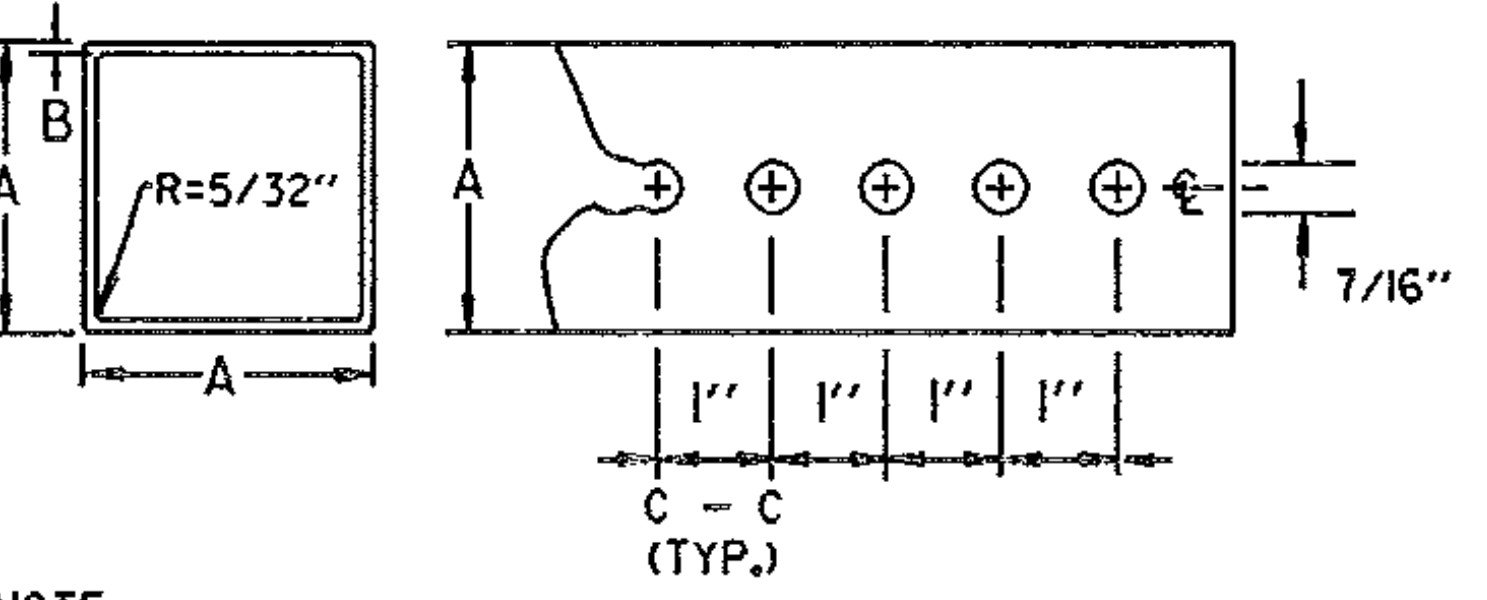


GUARDRAIL DEFLECTION CHART

(PER AASHTO - ROADSIDE DESIGN GUIDE - 1988)

TYPE	GR POST SPACING	DEFLECTION
THREE CABLE W/STEEL POSTS	16' - 0"	12'
W/WOODEN POSTS	12' - 6"	12'
W-BEAM W/WEAK POST	12' - 6"	7'
W/STRONG POST	6' - 3"	3'
BOX BEAM	6' - 0"	5'
THREE BEAM W/WEAK POST	12' - 6"	4'
W/STRONG POST	6' - 3"	2'

THIS CHART LISTS THE THEORETICAL DEFLECTION DISTANCE UPON IMPACT OF VARIOUS GUARDRAIL WITH DIFFERENT TYPES AND SPACING OF POSTS.



NOTE :
THE POSTS SHALL BE CAREFULLY FORMED OF STEEL WITH A MINIMUM YIELD OF 55,000 PSI, INTO A SIZE AND SHAPE WITH CORNERS INDUCTION WELDED IN SUCH A MANNER THAT NEITHER FLASH NOR WELD SHALL INTERFERE WITH THE TELESCOPING PROPERTIES, NOR DAMAGE THE GALVANIZING.

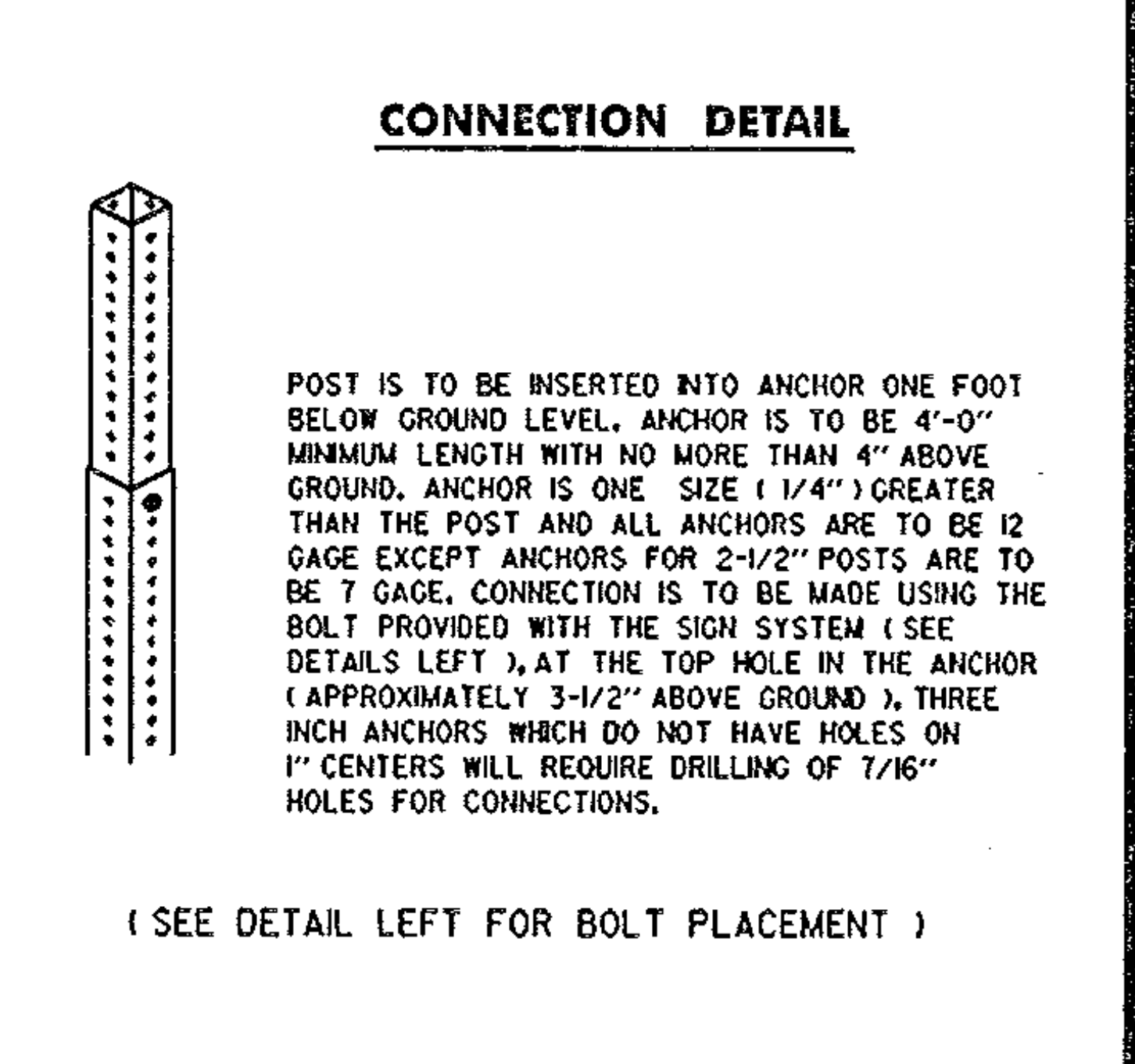
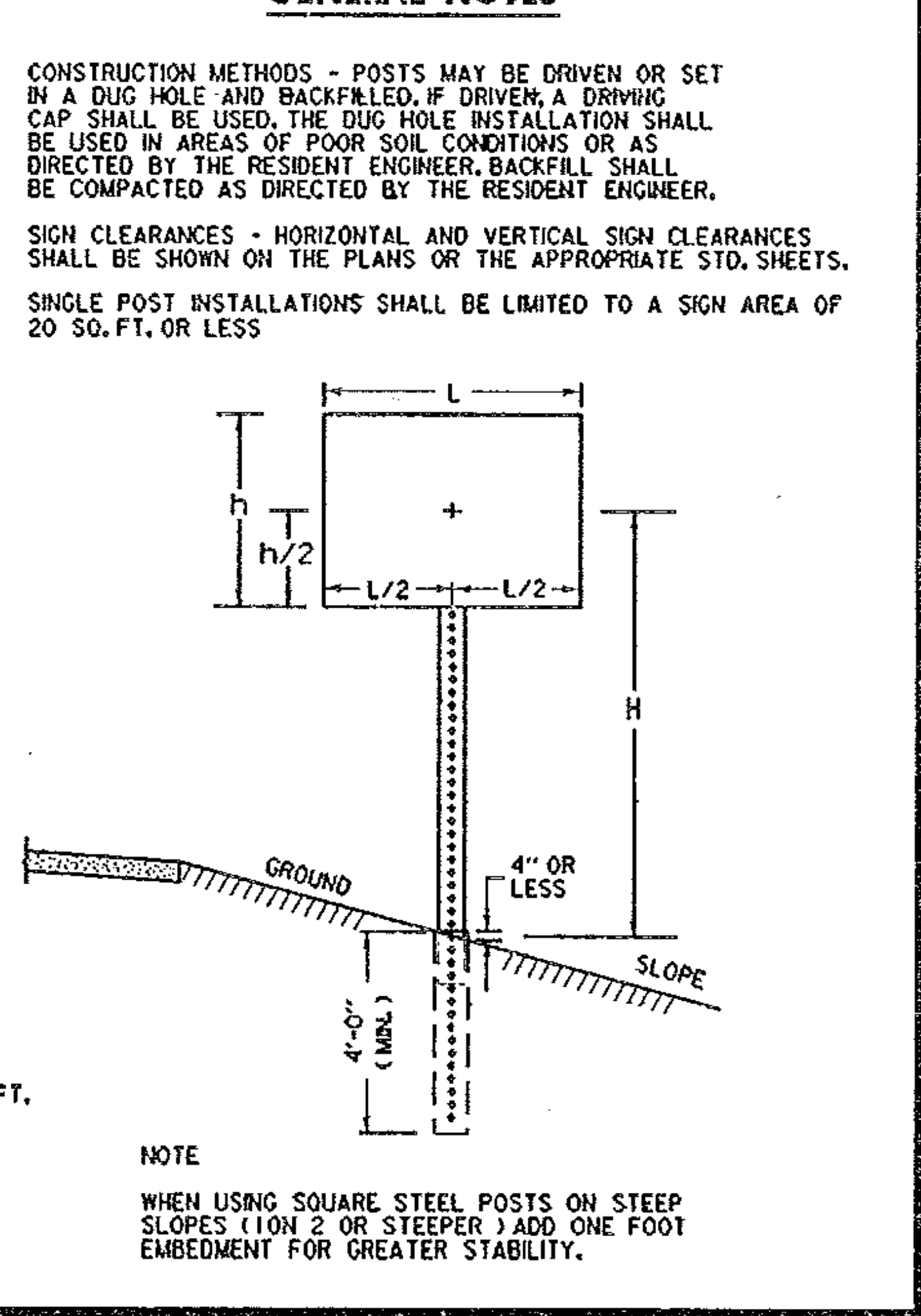
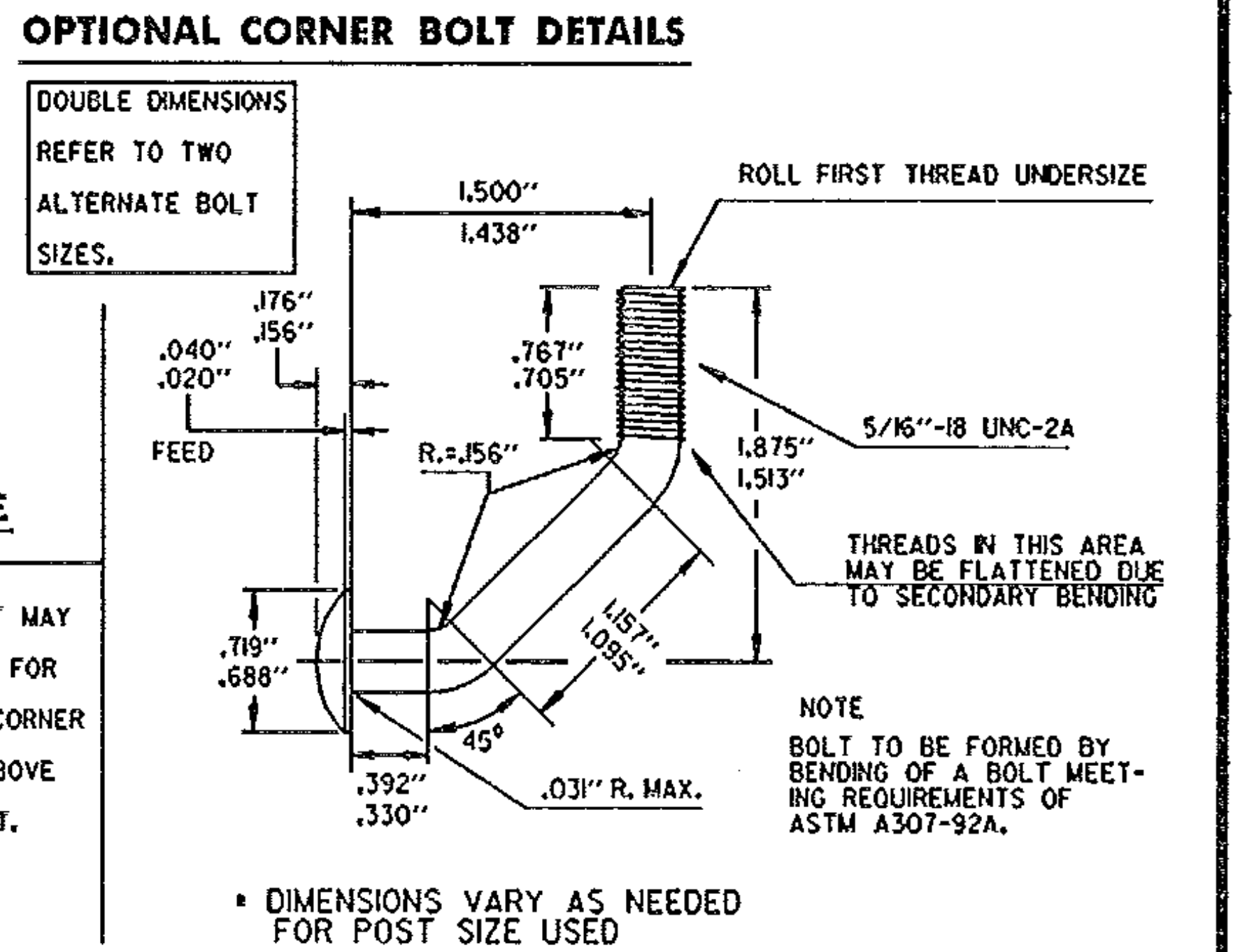
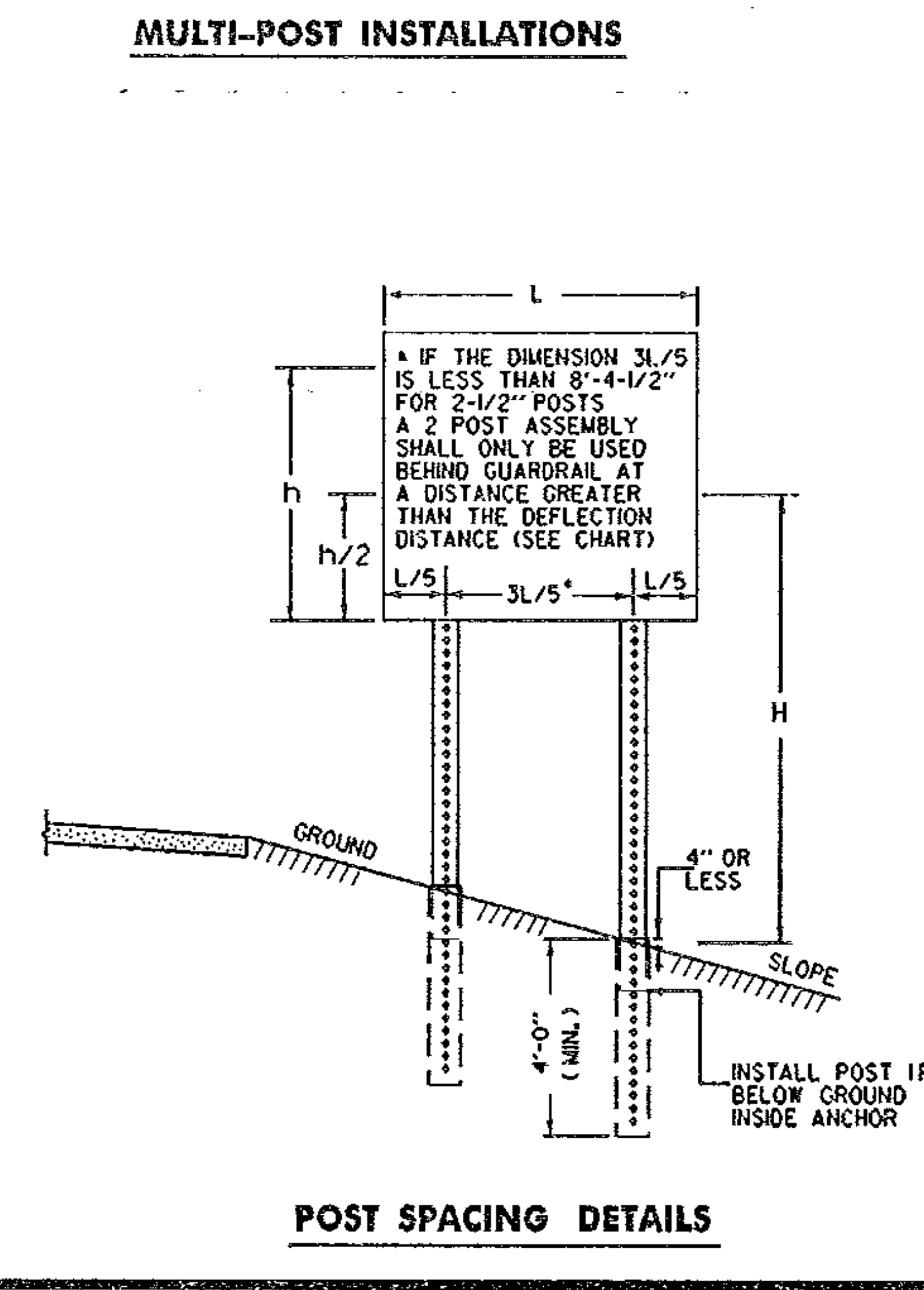
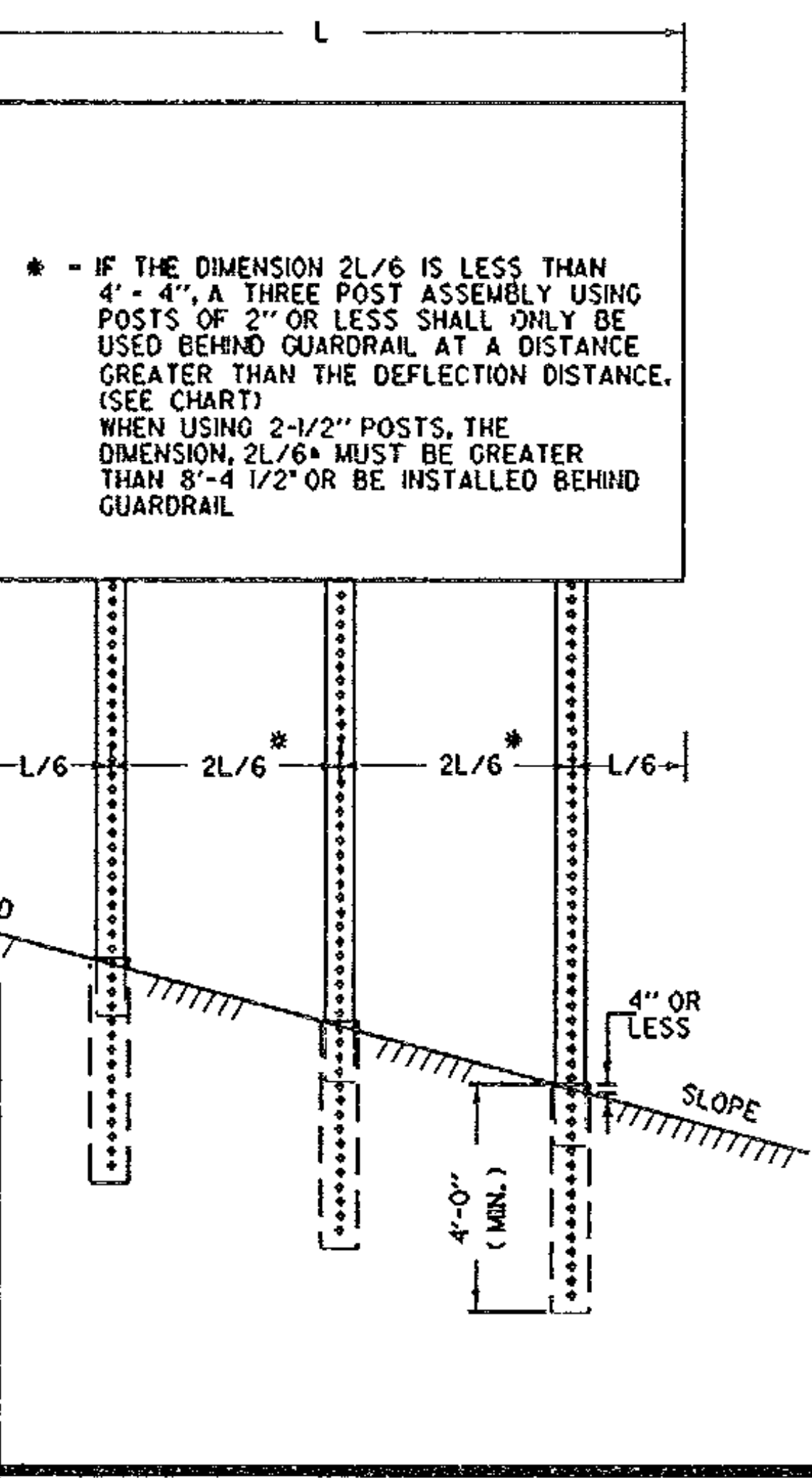
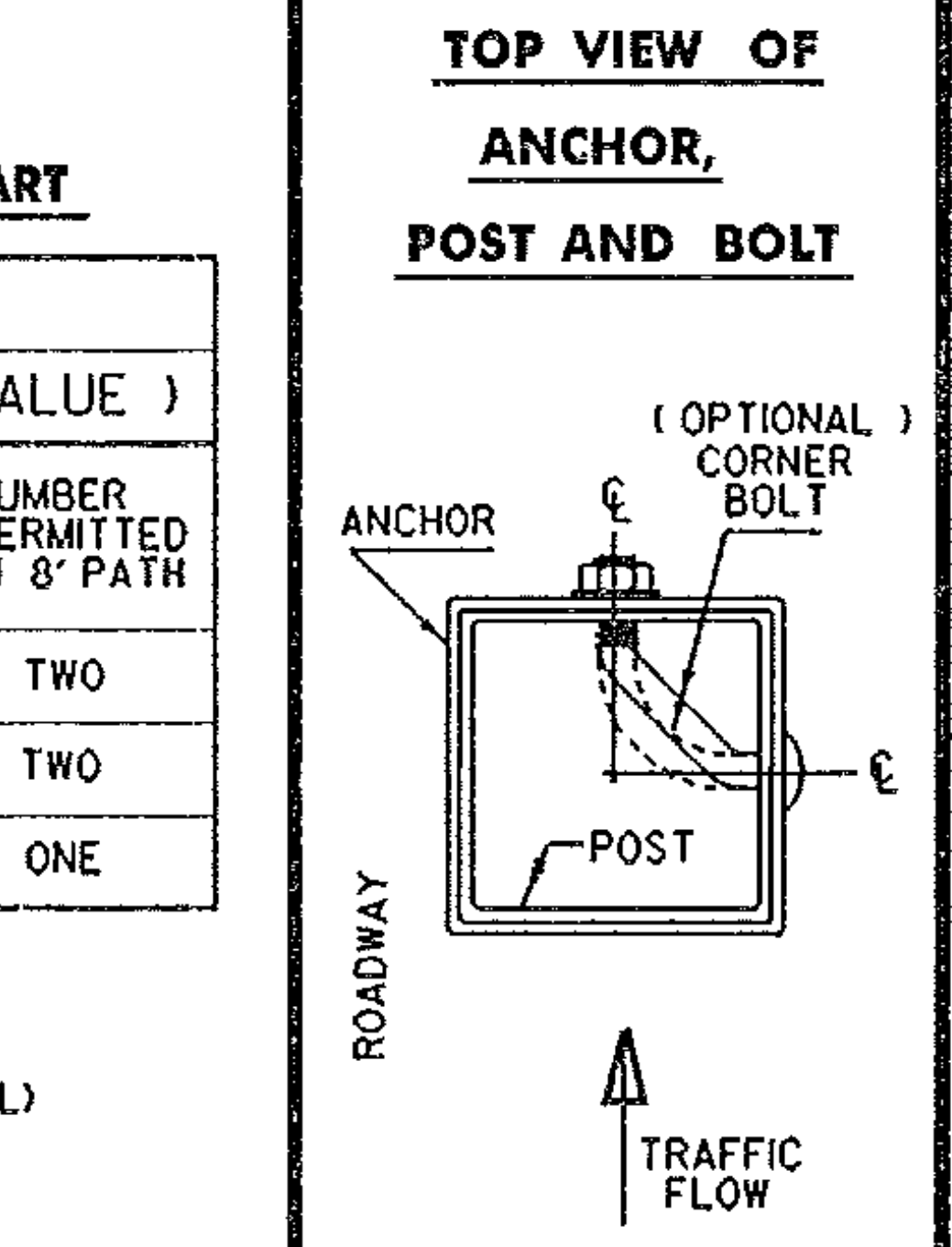
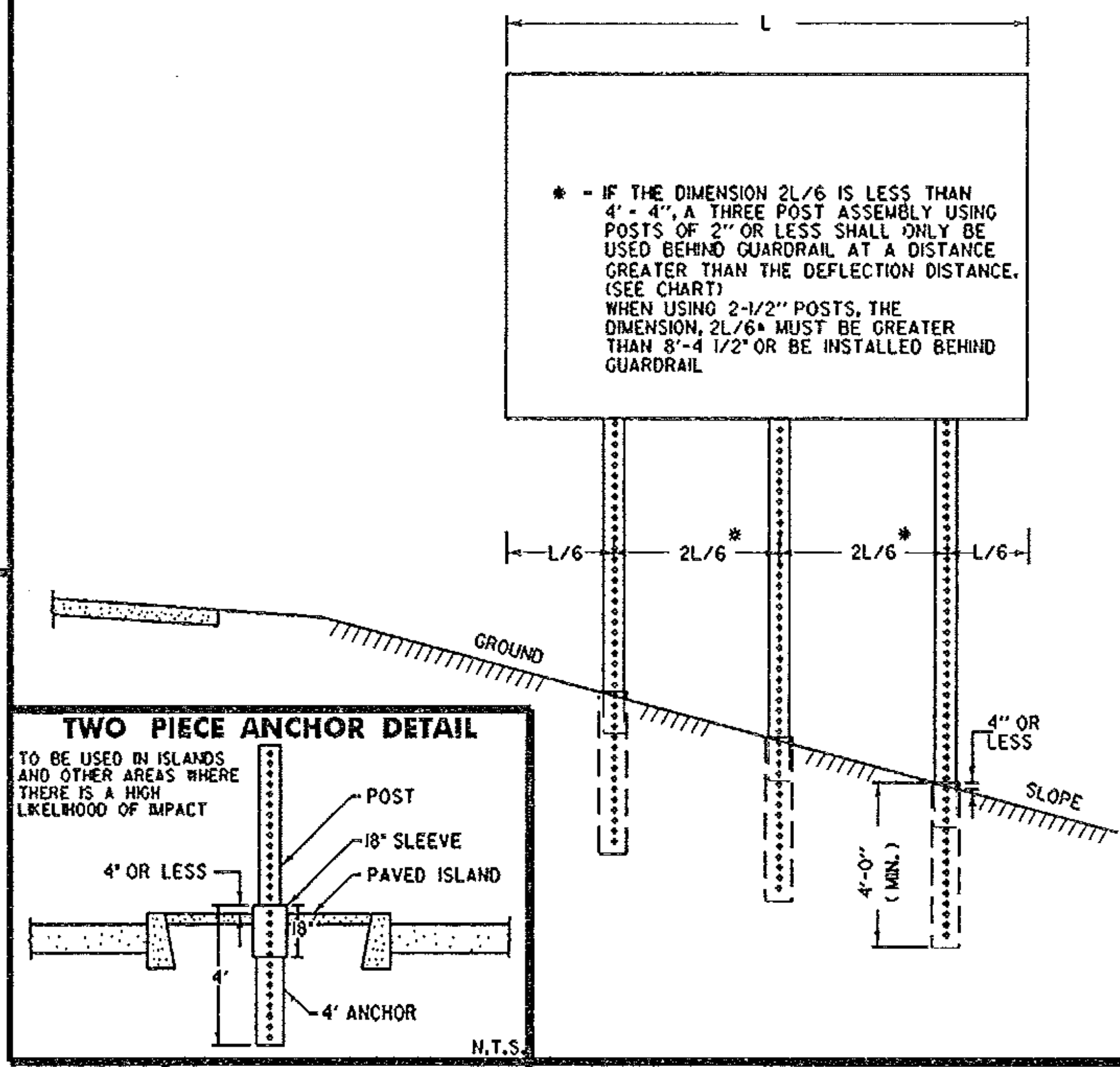
* THE WALL THICKNESS TOLERANCES SHALL BE +.005 AND -.010 FOR THE 12 GAUGE.

DIMENSION DETAILS AND POST SELECTION CHART

POST SELECTION CHART								
SIGN AREA (FT ²) X H (FT) ≤ SV (SELECTION VALUE)								
POST SIZE	DIMENSIONS			SECTION MODULUS	ONE POST	TWO POST	THREE POST	NUMBER PERMITTED
LBS/FT.	A	*B	GAUGE	IN ³	S _v	S _v	S _v	IN 8' PATH
2.30	1-3/4"	.105	12	0.265	73	146	219	TWO
2.65	2"	.105	12	0.372	102	204	306	TWO
3.35	2-1/2"	.105	12	0.642	177	354	531	ONE

DESIGN CRITERIA:
WIND SPEED = 60 MPH (10 -YEAR MEAN RECURRENCE INTERVAL)
WIND PRESSURE = 14 PSF
STEEL MINIMUM YIELD = 55,000 PSI
ALLOWABLE STRESS = (1.4) 0.60 FY

ATUM	
VERTICAL	N/A
HORIZONTAL	N/A



SQUARE STEEL SIGN POST DETAIL SHEET	SURVEYED BY	N/A	DATE	N/A
	DRAWN BY	PAVE	DATE	2/96
	SQUAD LEADER	N/A		
	DESIGN FILE NO.	/pave/95c054/pc054.dgn		
	PARM FILE	pc054d3.i	DATE PLOTTED	3-APR-1996
	PROJ. NAME	DERBY LINE		
PROJ. NO.	STP 96201115			
SHEET	12A OF 12	SHEETS		