

**GENERAL NOTES**

**CONSTRUCTION SPECIFICATIONS**

- 1) ALL MATERIAL AND WORKMANSHIP TO BE IN ACCORDANCE WITH THE STATE OF VERMONT AGENCY OF TRANSPORTATION STANDARD SPECIFICATIONS FOR CONSTRUCTION DATED 2006 WITH LATEST REVISIONS AND THE AASHTO LRFD BRIDGE CONSTRUCTION SPECIFICATIONS FOR HIGHWAY BRIDGES 4th EDITION WITH INTERIMS THROUGH 2010.

**MATERIAL SPECIFICATIONS**

- 1) ALL STEEL TO BE UNPAINTED  
AASHTO M270 (ASTM A709) GRADE 50W.
- 2) MATERIAL NOTED "CVN" OR "T2" ON DETAIL DRAWINGS SHALL BE CHARPY V-NOTCH TESTED IN ACCORDANCE WITH THE REQUIREMENTS OF VERMONT STANDARD SPECIFICATIONS SECTION 714.01.
- 3) HIGH STRENGTH BOLTS:  
-ASTM A325 (AASHTO M164) TYPE 3 W/ A563 GRADE C3 NUTS & F436W WASHERS  
BOLTS & NUTS SHALL BE ROTATIONAL CAPACITY TESTED. DO NOT MIX NUTS & BOLTS FROM DIFFERENT CONTAINERS UNLESS ALL BOLTS & NUTS HAVE THE SAME LOT NUMBER.

**FABRICATION**

- 1) ALL HOLES SHALL BE PUNCHED OR DRILLED FULL SIZE (UN).

**WELDING**

- 1) THE CONFIGURATION OF THE WELD JOINTS AND ALL WELDING PROCEDURES SHALL BE IN ACCORDANCE WITH AASHTO/AWS D1.5-08 BRIDGE WELDING CODE AND IN ADDITION TO SPECIFICATIONS SHOWN ABOVE. ALL WELDING WILL BE DETAILED TO PRE-QUALIFIED JOINTS, UNLESS PROHIBITED BY THE DESIGNER.
- 2) WELDING OF MAIN LOAD CARRYING MEMBERS AND ATTACHMENTS SHALL BE PERFORMED USING THE AUTOMATIC SUBMERGED ARC & SHIELDED METAL ARC PROCESSES. ALL WELDS ARE CONTINUOUS U.N.
- 3) NON DESTRUCTIVE TESTING OF WELDS SHALL BE IN ACCORDANCE WITH THE REFERENCED SPECIFICATION.
- 4) SEE DETAILS "WS1 & WS2" ON THIS DRAWING FOR WELD TERMINATION DETAIL.

**FIELD CONNECTIONS**

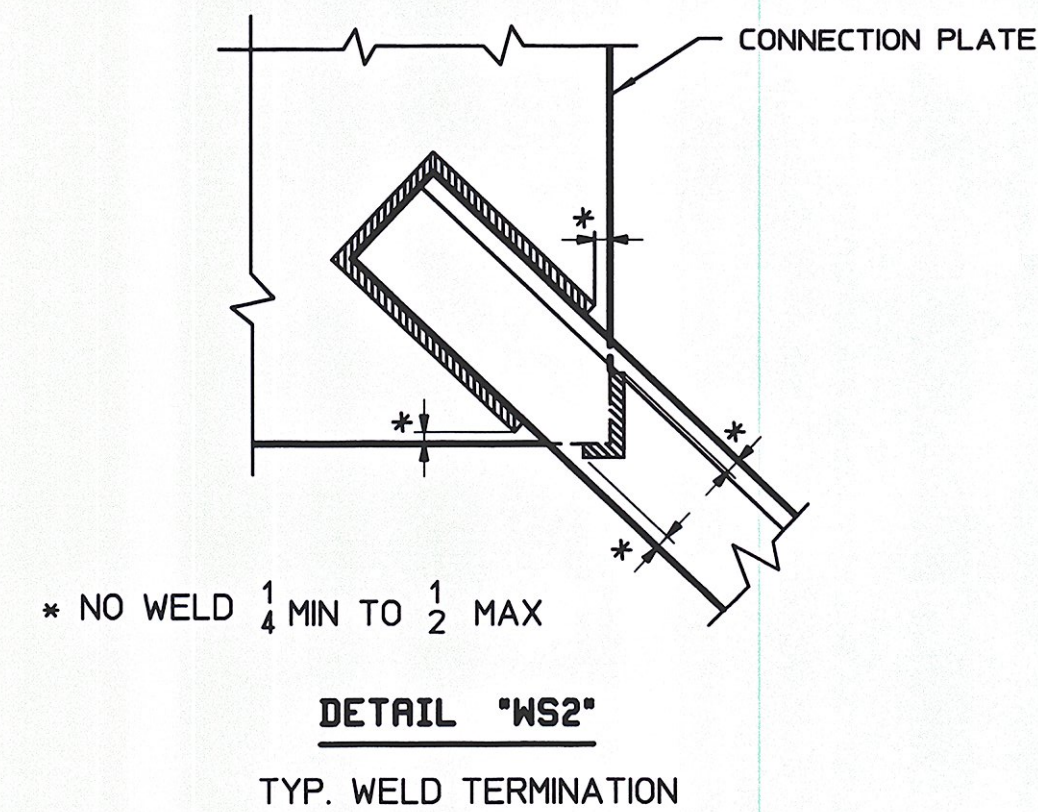
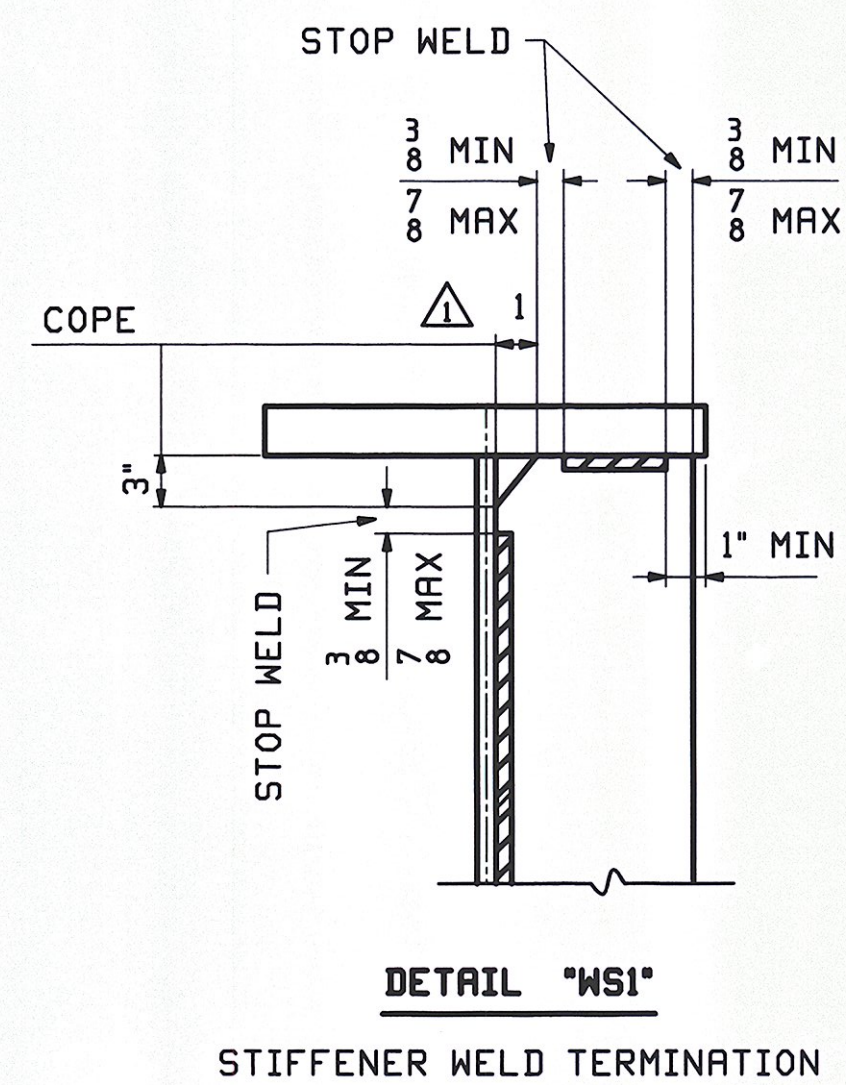
- 1) ALL FIELD CONNECTIONS SHALL BE MADE WITH A-325 HS BOLTS, INSTALLED PER SECTION 506.19(c).
- 2) BOLTS SHALL HAVE HEAVY HEX NUT, HEAVY HEX HEAD, AND AT LEAST ONE FLAT WASHER EACH. WASHER TO BE PLACED UNDER TURNED ELEMENT.
- 3) PIECE MARKS WILL BE LOCATED AS SHOWN ON ERECTION DRAWINGS.

**CLEANING**

- 1) ALL STEEL SHALL BE BLAST CLEANED IN ACCORDANCE WITH SSPC SP-10.

**PAINTING**

- 1) NO PAINT REQUIRED ON THIS STRUCTURE.



*Structures*

VTrans  
Received  
CKD: JCS OK'd BY: [Signature]  
DEC 7 2011  
Resubmit BY: [Signature] APPROVED DATE: 12-8-11

**NOTE TO ENGINEER:**  
THESE NOTES ARE NOT INTENDED TO BE ALL INCLUSIVE AND COMPLIANCE WITH RELEVANT SPECIFICATIONS REMAIN UNCHANGED.

△	11/30	APPROVAL COMMENTS	TJB	PCP		
0						12-1-11
REV.	DATE	REMARKS	DWN	CHK	APVL	SHOP
MATERIAL:		SURFACE PREP. & PAINT:	HOLES:		SHOP BOLTS:	
M270-50W (UN)		SEE GN1	AS NOTED		AS NOTED	
<b>DESCRIPTION: GENERAL NOTES</b>						
CASCO BAY STEEL STRUCTURES, INC.						
1 WALLACE AVE.			PHONE (207) 780-6722			
SOUTH PORTLAND, ME 04106			FAX. (207) 780-6726			
STRUCTURE: VT 12 over LOCUST CREEK			DRAWN:	DATE:		
BRIDGE 30			TJB	10/09		
BETHEL			CHKD:	DATE:		
Windsor County			PCP	10/11		
LOCATION: BETHEL			JOB NO.		DWG NO.	
PROJ NO. BHF 0241(30)			507		GN1	
CUSTOMER: VERMONT ROT					REV. △	