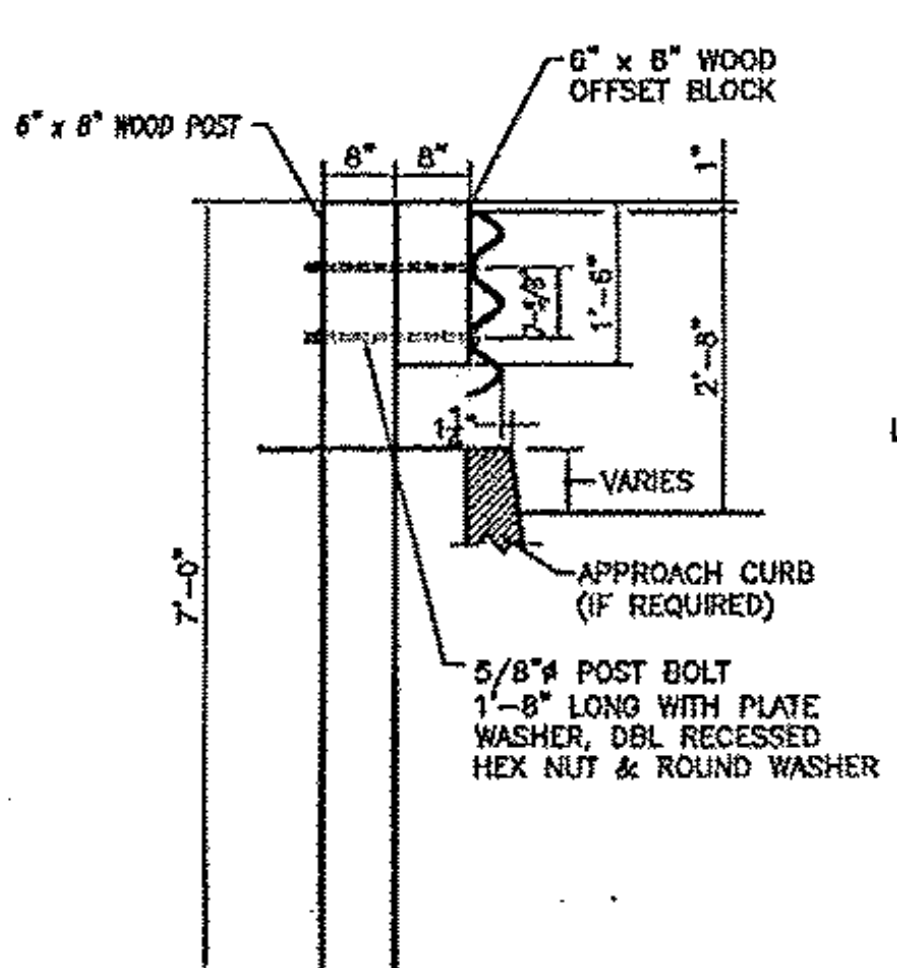
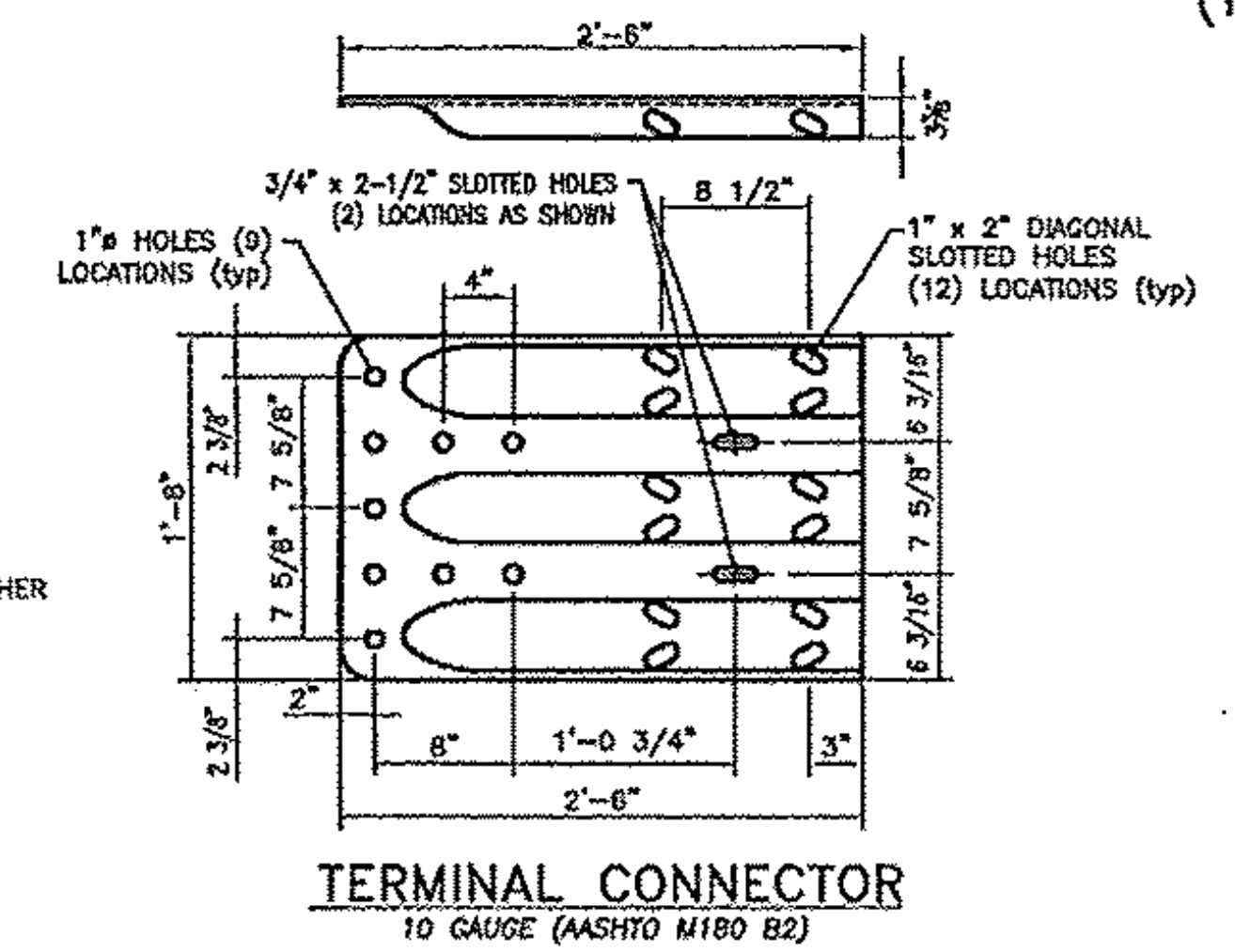


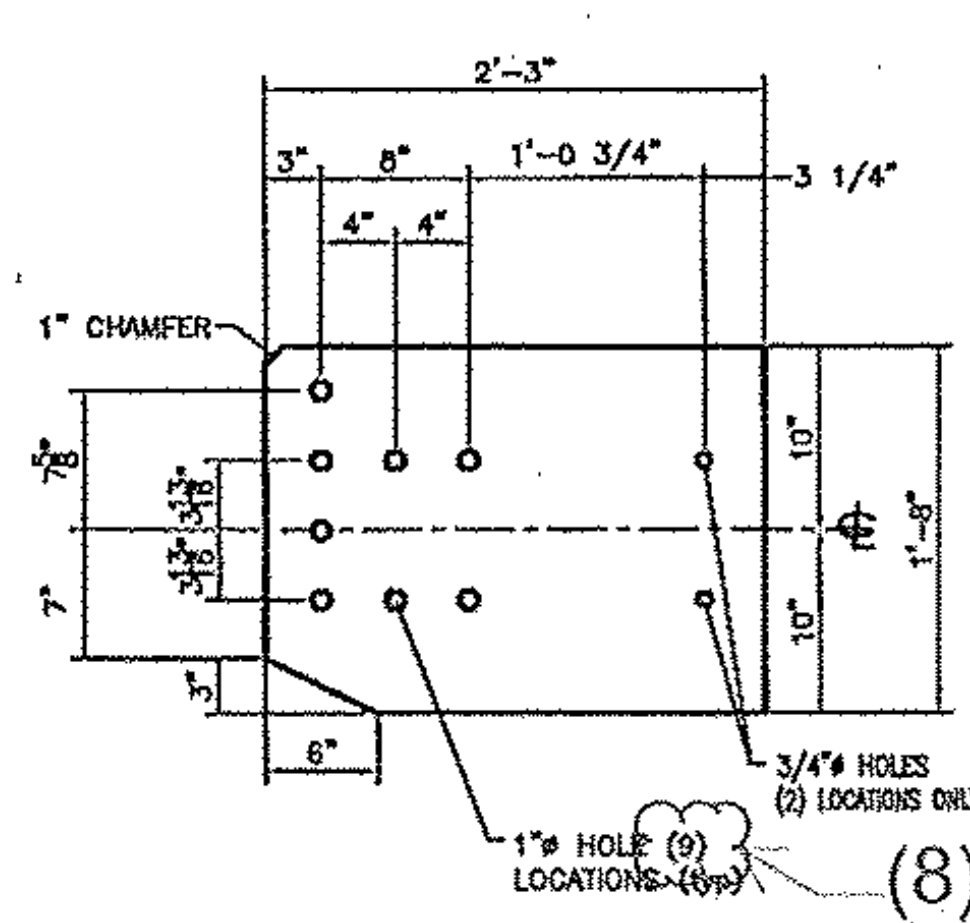
APPROACH RAIL ELEVATION
(TOTAL LIMIT ITEM 621.72 = 116.5 LF)



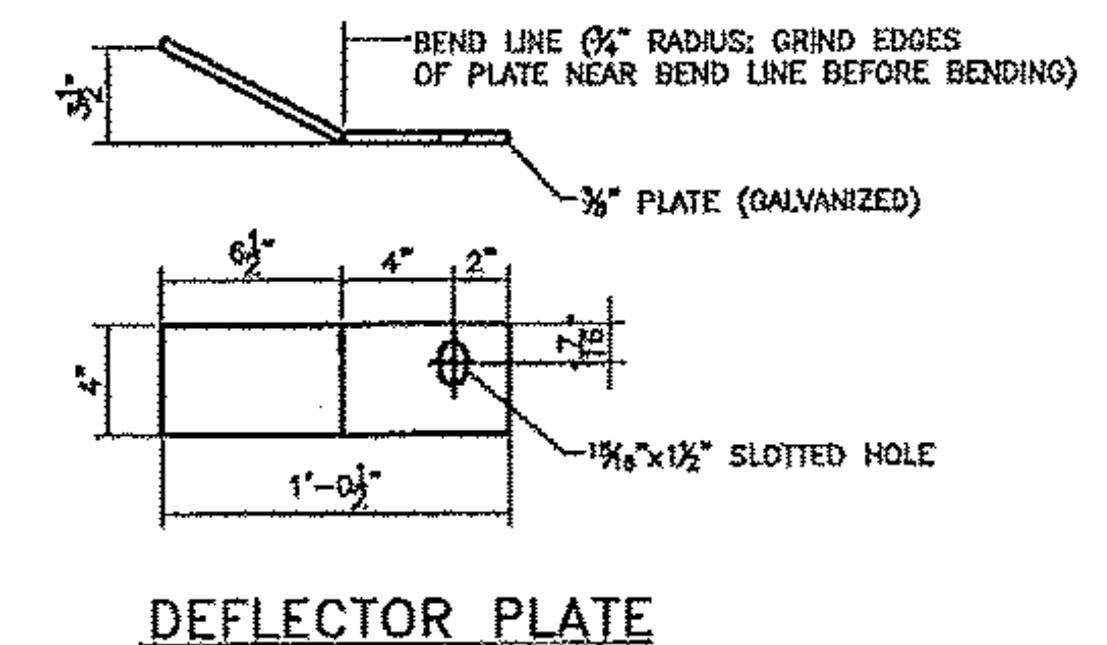
SECTION A-A



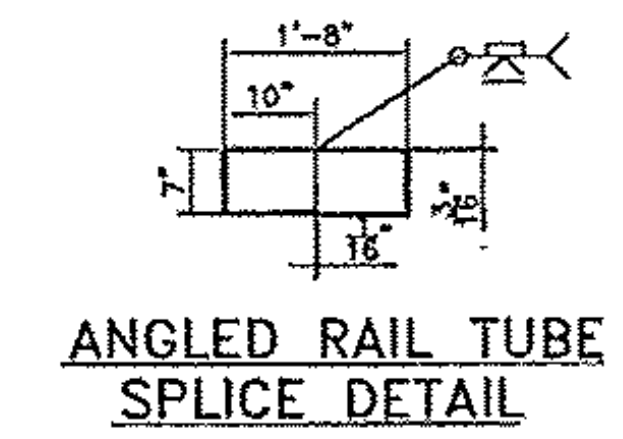
TERMINAL CONNECTOR
10 GAUGE (ASHTO M180 B2)



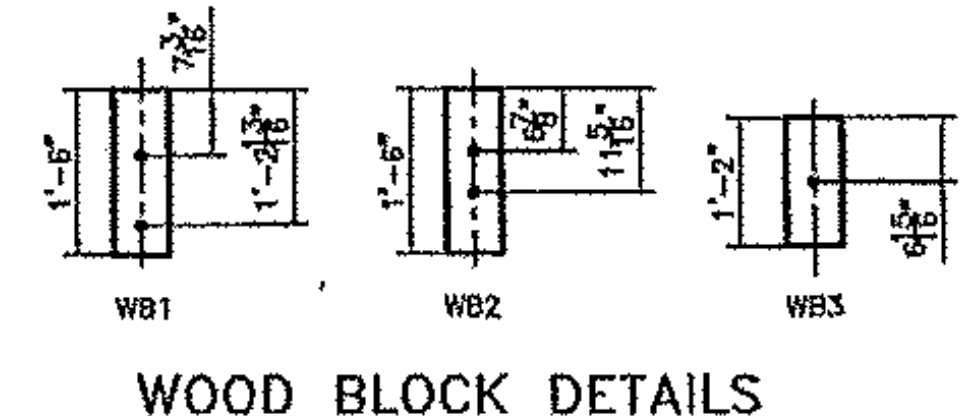
CONNECTION PLATE
3/8\" x 1'-8\" x 2'-3\" (A709 gr 36)



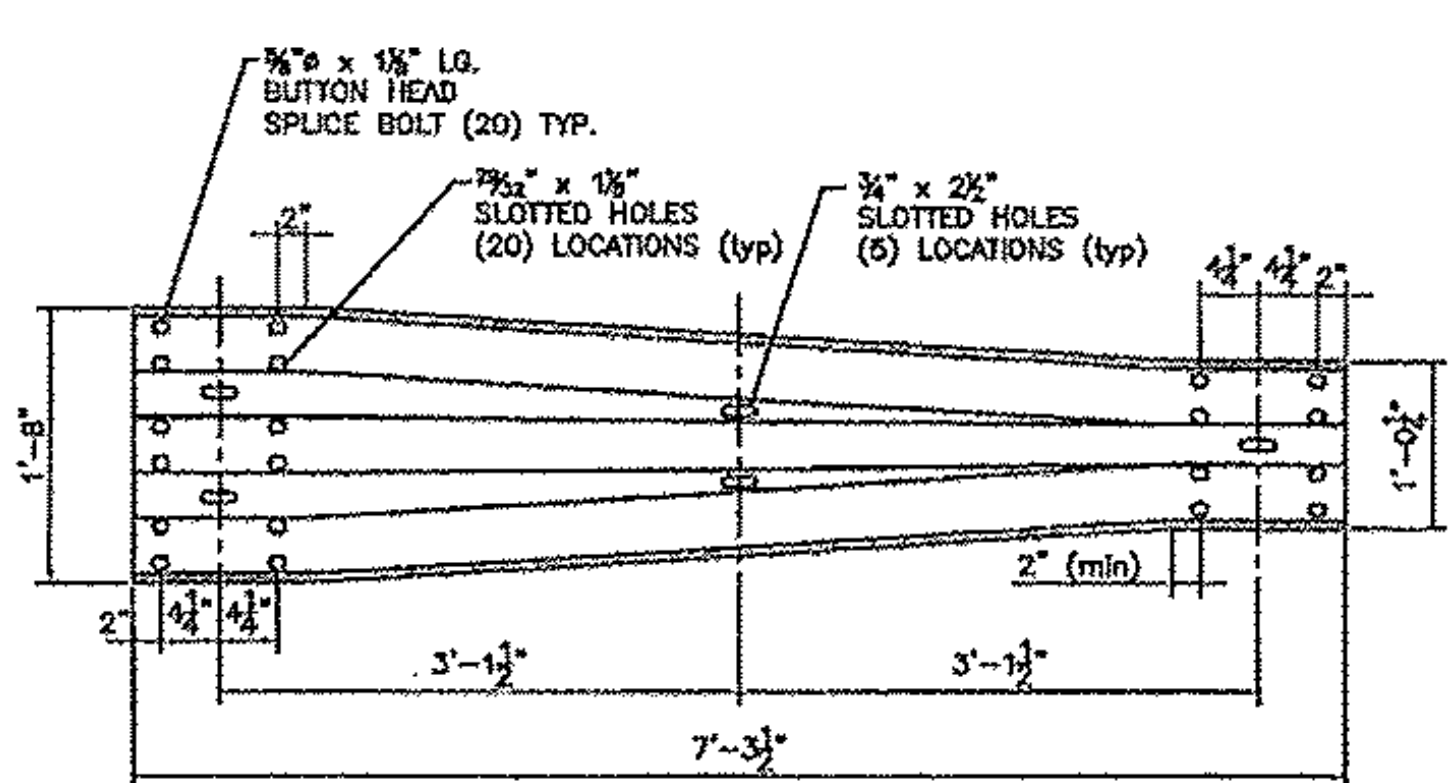
DEFLECTOR PLATE



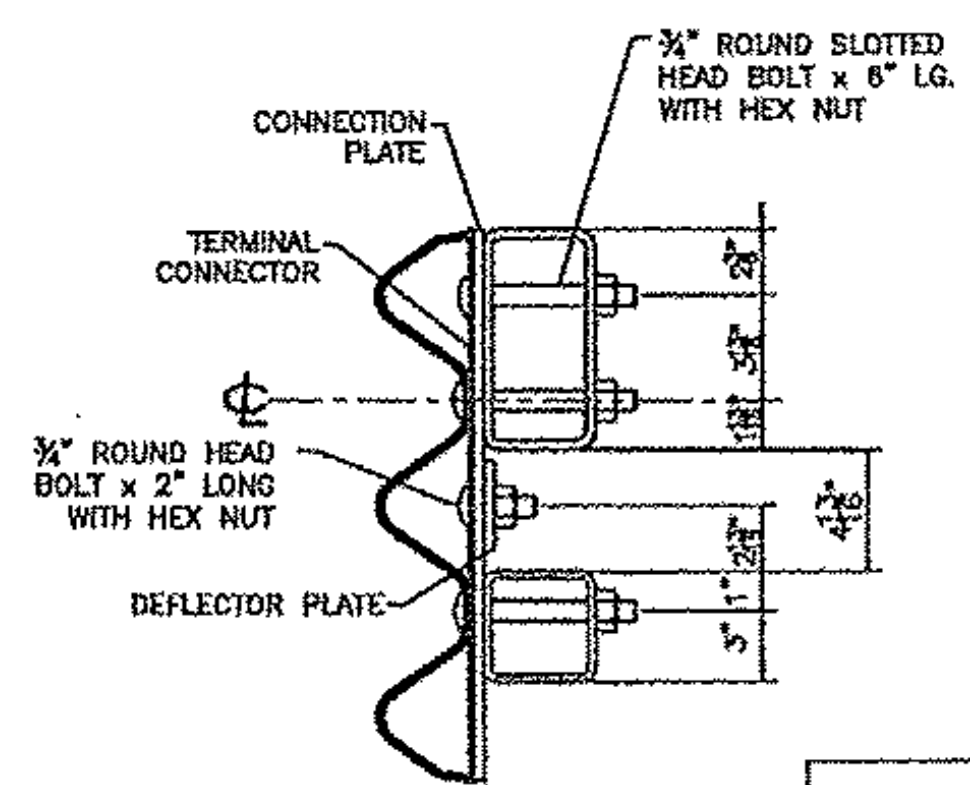
ANGLED RAIL TUBE
SPLICE DETAIL



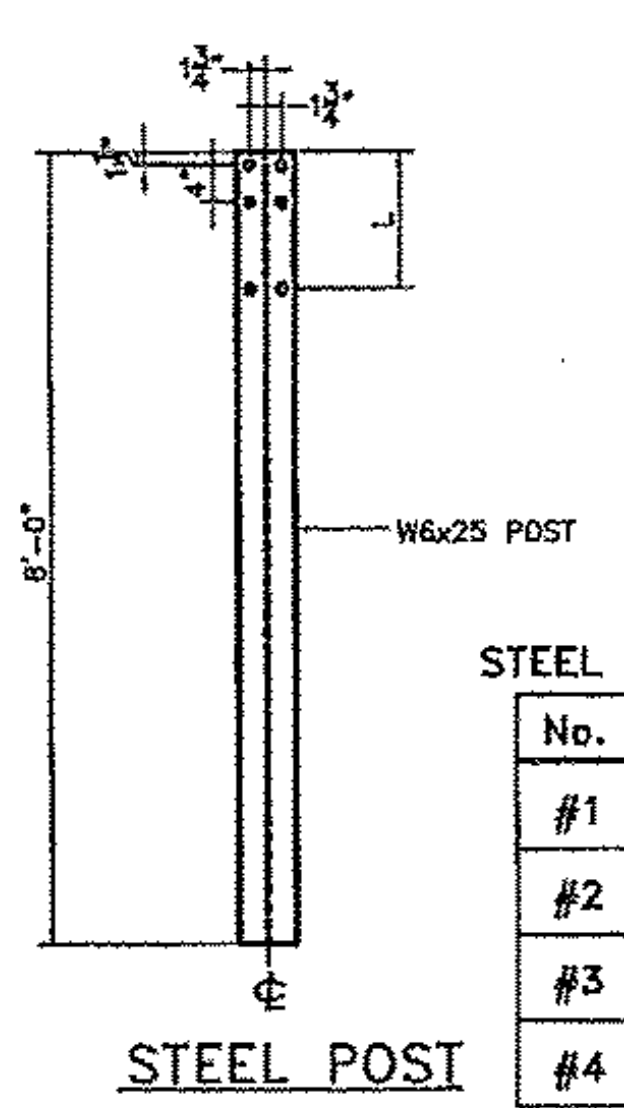
WOOD BLOCK DETAILS



THREE TRANSITION PANEL
12 GAUGE (ASHTO M180 A2)



SECTION B-B



STEEL POST

STEEL POST CHART

No.	L
#1	1'-3.250"
#2	1'-3"
#3	1'-2.688"
#4	1'-2.375"

REVISIONS

No.	Remarks	Date
0	Initial submittal	

BILL OF MATERIAL (4 APPROACHES)

MK.	Qty.	Description	Size/Shape	Unit	Material
4		UPPER APPROACH RAIL	TS 8x4x0.313"	6'-4"	AS50 Gr. B
4		LOWER APPROACH RAIL	TS 4x4x0.25"	9'-4"	AS50 Gr. B
SP	16	STEEL POST	W6 x 25	6'-0"	AST2 Gr. 50
WP1	32	WOOD POST	6" x 6"	7'-0"	TIMBER
WP2	4	WOOD POST	6" x 6"	7'-0"	TIMBER
WP3	4	WOOD POST	6" x 6"	7'-0"	TIMBER
WB1	32	WOOD BLOCK	6" x 6"	1'-6"	TIMBER
WB2	4	WOOD BLOCK	6" x 6"	1'-6"	TIMBER
WB3	4	WOOD BLOCK	6" x 6"	1'-2"	TIMBER
4		ANGLED SPLICE TUBE FOR TS 8x4x0.313"			
4		TUBE	TS 7x6x0.375"	1'-8"	AS50 Gr. B
8		WELDED LOCK NUTS	0.625"		AS53 Gr. A
4		SPLICE TUBE FOR TS 4x4x0.250"			
4		TUBE	TS 3x3x0.313"	1'-8"	AS50 Gr. B
8		WELDED LOCK NUTS	0.625"		AS53 Gr. A
4		TERMINAL CONNECTOR	10 Co.	2'-6"	M180
4		CONNECTION PLATE	0.375" x 1'-8"	2'-3"	A709 Gr. 36
4		END CAP FOR TS 8x4 RAIL TUBE			
4		PLATE	0.188" x 4"	6"	A709 Gr. 36
16		PLATE	0.125" x 1'	1"	A709 Gr. 36
4		END CAP FOR TS 4x4 RAIL TUBE			
4		PLATE	0.188" x 4"	4"	A709 Gr. 36
16		PLATE	0.125" x 1'	1"	A709 Gr. 36
2		DEFLECTOR PLATE (LEFT)	0.375" x 4"	12.5'	A709 Gr. 36
2		DEFLECTOR PLATE (RIGHT)	0.375" x 4"	12.5'	A709 Gr. 36
4		0.76" x 2" LG. ROUND HEAD BOLT W/NUT			A307
4		THREE TRANSITION PANEL	12 Co.	7'-3.50"	M180 A2
4		THREE BEAM	12 Co.	12'-8"	M180 A2
92		0.75" x 6" ROUND HEAD BOLT W/NUT & ROUND WASHER			A307
8		0.625" x 20" LG. POST BOLT W/DBL RECESSED NUT, PLATE & ROUND WASHER			A307
64		0.625" x 18" LG. POST BOLT W/DBL RECESSED NUT, PLATE & ROUND WASHER			A307
32		0.625" x 1.75" LG. CAP SCREW W/WASHER			A325
128		0.625" x 1.25" LG. PANEL SPLICE BOLT W/DBL RECESSED NUT			A307
32		0.75" x 0.5" LG. (SCH 40) SPACER PIPE			A53

- NOTES:
- PAYMENT FOR GUARDRAIL APPROACH SECTION - GALVANIZED NETC 2 RAIL SHALL INCLUDE THE TERMINAL CONNECTOR, THE CONNECTION PLATE, THE DEFLECTOR PLATE, RAIL, POSTS, BLOCKS AND ATTACHMENT HARDWARE.
 - REFLECTIVE MATERIAL SHALL MEET REQUIREMENTS OF SUBSECTION 750.08 AND SHALL BE A 0.063" ALUMINUM BACKING WHITE OR YELLOW REFLECTOR. WHITE IS TO BE INSTALLED ON THE DRIVER'S RIGHT. FOR ONE-WAY BRIDGES, YELLOW IS TO BE INSTALLED ON THE DRIVER'S LEFT.
 - ALL APPROACH RAIL SPLICES SHALL BE LAPPED IN THE DIRECTION OF TRAFFIC FLOW.
 - ALL APPROACH RAIL MATERIALS, DIMENSION SIZES AND NOTES SHALL BE THE SAME AS THOSE OF THE BRIDGE RAIL, UNLESS OTHERWISE NOTED.
 - APPROACH RAIL BOLTS SHALL BE ASTM A307 GRADE A AND NUTS SHALL BE ASTM M201 (ASTM 563 GRADE A OR BETTER (GALVANIZED)). WASHERS SHALL BE ASTM F844.
 - WELD TOP SPLICE BAR TO FIT BEND. USE COMPLETE PENETRATION WELD (B-U2).

Vermont Agency of Transportation
RECEIVED
CK'D BY UBS OK'D BY CWC
16 November 2011
RESUBMIT APPROVED ✓
BY C.W. CARLSON DATE 11-16-2011

HIGHWAY SAFETY CORP
GLASTONBURY, CT
860-633-9445

ITEM 621.72 NETC 2 RAIL BRIDGE APPROACH
VT ROUTE 12
BETHEL, VERMONT
PROJECT NO. BHF 0241(30)

CERTIFIED FABRICATOR

ISSC AOW NO. 1856
SHEET NO. 3 of 3

GENERAL CONTRACTOR: F.R. LAFAYETTE
DATE: 10-27-11
SCALE: NONE
SIZE: D